

Andrew Ehlers

From: Joe Bromley [REDACTED]@wilsonvilleconcrete.com>
Sent: Tuesday, January 9, 2024 11:55 AM
To: [REDACTED] CWO-4 USCG SEC COL RIVER (USA)
Subject: [Non-DoD Source] Re: CINDY B Allision

[REDACTED],

Good morning to you as well. I am not by a printer today, but will get the 7.3 to you for requested days ASAP. I will have to print and scan as they are in helm and I can't download them from the program. This is where we do our daily nav assessment. Attached is a picture sample.

The pilot house alerter on the Cindy looks to be a custom made unit from Tidewater. It is functional and we have had a tech on board to check her functionality. We are in the process of getting quotes for replacement from three different companies as we believe it's a bit outdated. Here is her current settings:

- A. At approximately 3 min of no motion it sounds a buzzer and lights a red indicator light on the window post.
- B. At approximately 6 min a louder horn and strobe located at the aft STBD section of the wheel house sound and begin to flash.
- C. At approximately 10 min the General Alarm sounds.

It was discussed that a swinging microphone will appease the sensors and hold off the alarms. We will be swapping this unit out ASAP.

Kind regards,

On Jan 9, 2024, at 07:37, [REDACTED] CWO-4 USCG SEC COL RIVER (USA) [REDACTED]@uscg.mil> wrote:

Good morning Joe,

I have been working on my analysis on the incident and I was looking to see if I could get the following information:

7.3 Master's Daily form (Nov 10-12):

It is my understanding from the Health and Safety Plan this form captures the Navigational assessment. If the Navigational Assessment was captured differently, could you provide that for the specified period.

Pilot House Alerter System:

What is the make and model of the system?

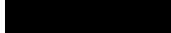
Do you have a manual for the system?

What is the time to alarm setting? If you do not know, can you test it to find out how long it takes to alarm?

Thanks in advance for your help.

v/r

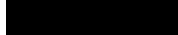


, MSSE4
Marine Investigator
Sector Columbia River
6767 N Basin Avenue
Portland, OR 97217



 (Desk)



 (Fax)

Joe Bromley

Marine General Manager

Wilsonville Concrete Products

PO Box 37
Wilsonville, OR 97070

Phone:

Mobile: 

www.wilsonvilleconcrete.com

[FB/ LINKEDIN/ IG](#)

WARNING: CONFIDENTIAL NOTICE – The information enclosed with this transmission are the private, confidential property of sender, and the material is privileged communication intended solely for the individual indicated. If you are not the intended recipient, you are notified that any review, disclosure, copying, distribution, or the taking of any other action relevant to the contents of this transmission are strictly prohibited. If you have received this transmission in error, please notify us immediately at 503.682.2525 or joeb@wilsonvilleconcrete.com

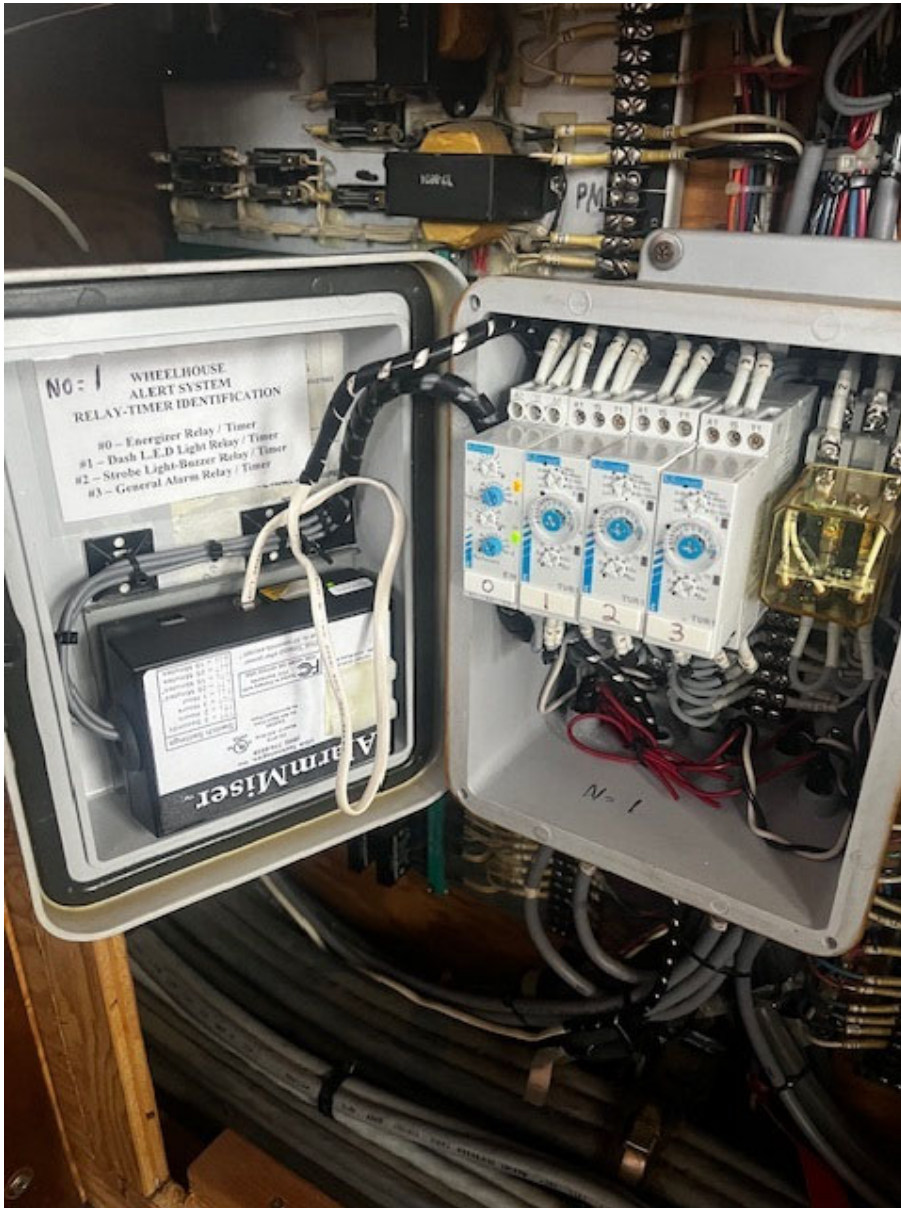












On Jan 9, 2024, at 10:26, Joe Bromley [REDACTED] [@wilsonvilleconcrete.com](mailto:joebromley@wilsonvilleconcrete.com)> wrote:

Got it! Thank you.

On Jan 9, 2024, at 10:25, [REDACTED] CWO-4 USCG SEC COL RIVER (USA) [@uscg.mil](mailto:[REDACTED]@uscg.mil)> wrote:

IAW 46 CFR 143.450, Pilothouse alerters are required on all boats with the following two exceptions:

1. Vessel's 65' and less.
2. Vessel's with two people in the pilot house at all times.