



**Photo 1 – View of the wreckage under the canopy of trees in a wooded area.**



**Photo 2 - View of the wreckage under the canopy of trees in a wooded area.**





**Photo 3 - View of a separated tree trunk under the canopy of trees in a wooded area.**



**Photo 4 - View of a separated tree trunk and separated airplane parts lodged in the tree trunk under the canopy of trees in a wooded area.**





**Photo 5 - View of a separated wing.**





**Photo 6 - View of a separated wing section.**





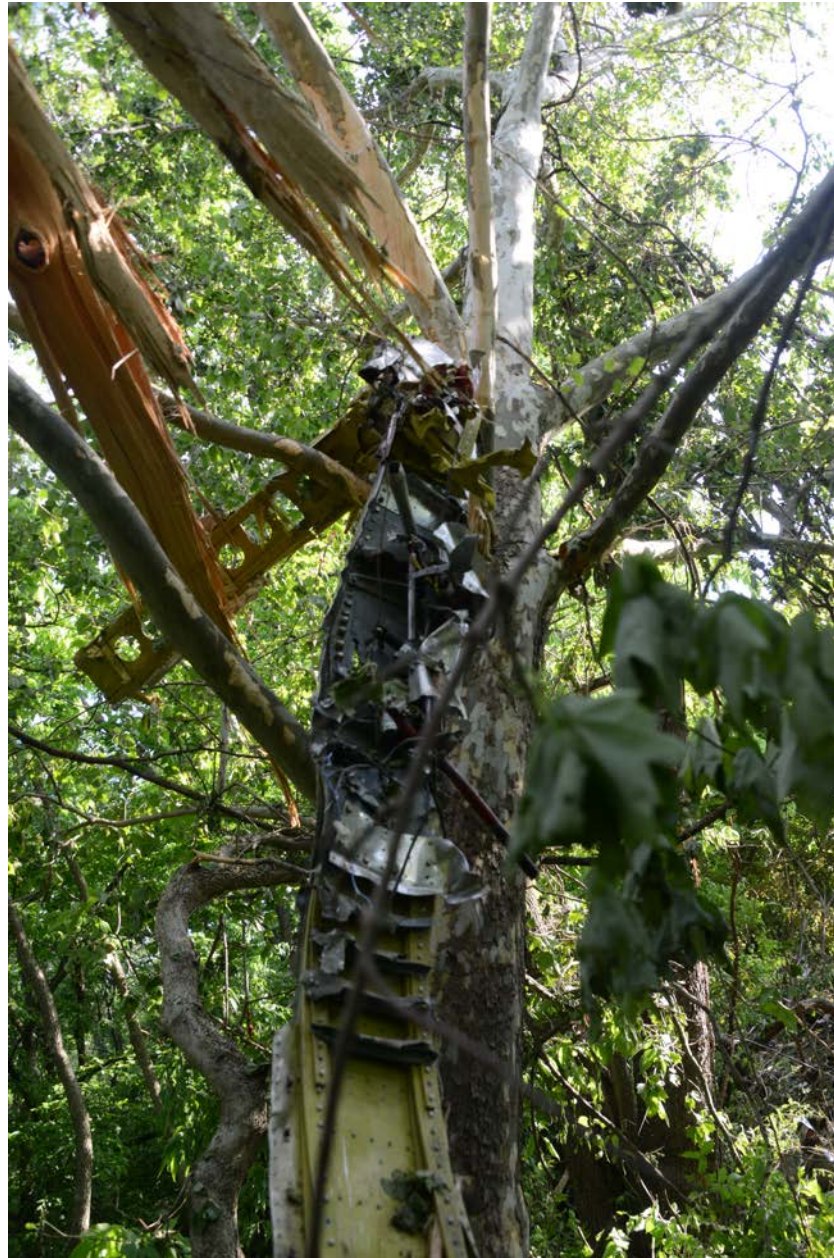
**Photo 7 - View of a separated wing section.**





**Photo 8 - View of a separated control tube within a separated wing section.**





**Photo 9 - Close-up view of a separated tree trunk and separated airplane parts lodged in the tree trunk under the canopy of trees in a wooded area.**





**Photo 10 - Close-up view of a separated spar recovered from a separated tree trunk.**





**Photo 11 - View of removed sparkplugs.**





**Photo 12 - View of the disassembled engine driven fuel pump.**





**Photo 13 - View of the crankshaft from the disassembled engine.**





**Photo 14 - View of the camshaft from the disassembled engine.**





**Photo 15 - View of a removed cylinder.**





**Photo 16 - View of the underside of the fuselage and empennage.**





**Photo 17 - View of the engine embedded in terrain.**





**Photo 18 - Close-up view of the engine embedded in terrain.**





**Photo 19 - Close-up view of the ignition switch.**





**Photo 20 - View of the vertical stabilizer indicating the airplane's N-number.**