

APP CRS	Rwy Idg	4842
173°	TDZE	651
	Apt Elev	658

RNAV (GPS) RWY 17

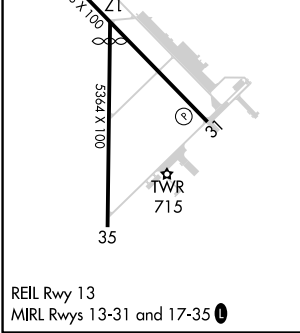
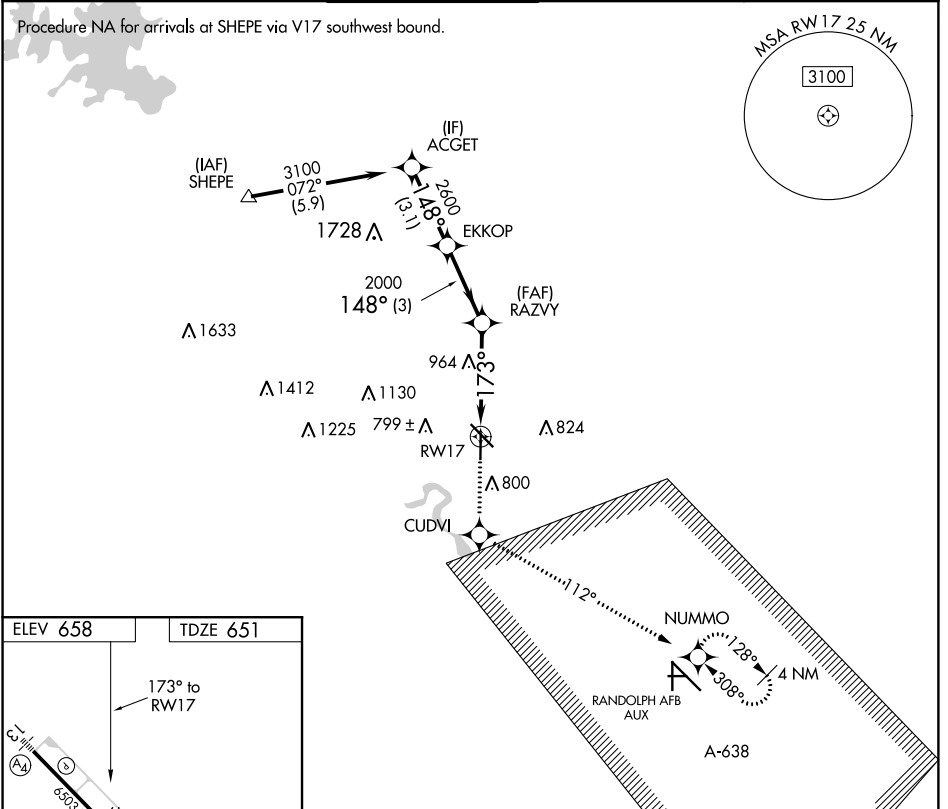
NEW BRAUNFELS RGNL (B.A.Z)

RNP APCH.

⚠ When local altimeter setting not received, use San Marcos Rgnl altimeter setting and increase all MDAs 60 feet and visibility Cat C 1/4 SM. VDP NA when using San Marcos Rgnl altimeter setting.

MISSED APPROACH: Climb to 3500 direct CUDVI and via 112° track to NUMMO and hold, continue climb-in-hold to 3500.

ATIS	SAN ANTONIO APP CON	NEW BRAUNFELS TOWER *	GND CON	CLNC DEL	UNICOM	CTAF
119.325	124.45 335.625	127.05 285.4	120.175	134.75	122.7	127.05



3500	CUDVI	NUMMO	ACGET
↑	✧	✧	
	112°		
	1.6 NM to RWY 17	2000	3100
	3.03°	2600	
	173°		
	1.6 NM	2.5 NM	3.1 NM
CATEGORY	A	B	C
LNAV MDA	1220-1	569 (600-1)	1220-1 5/8 569 (600-1 5/8)
			1220-1 3/4 569 (600-1 3/4)

SC-3, 23 APR 2020 to 21 MAY 2020

SC-3, 23 APR 2020 to 21 MAY 2020