



## **HIGHWAY FACTORS ATTACHMENT**

**Horizontal alignment on I-64 in the vicinity of the crash**

**Williamsburg, VA**

**HWY23MH004**

(5 pages)

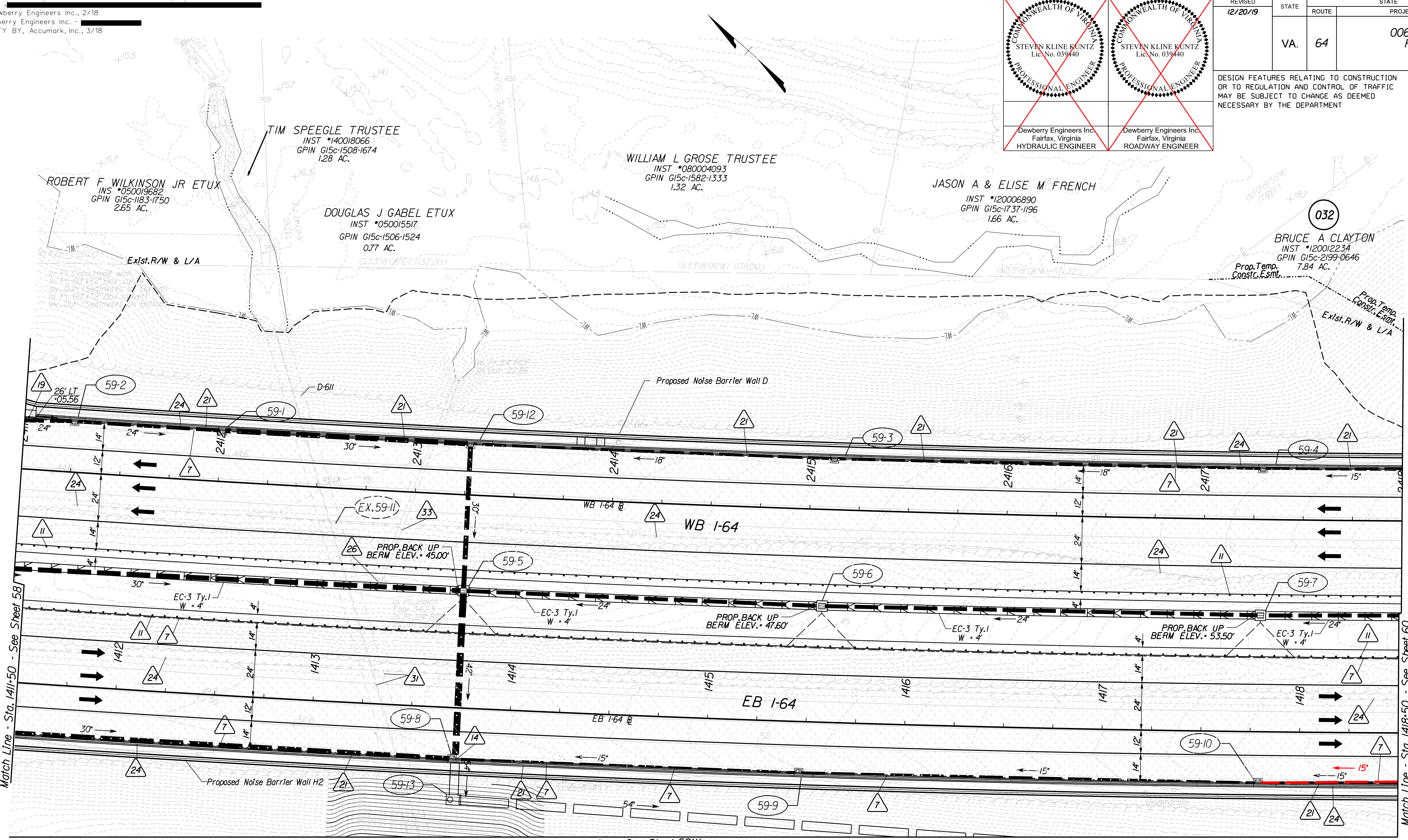


PROJECT MANAGER [REDACTED]  
SURVEYED BY, Dewberry Engineers Inc., 2/18  
DESIGNED BY Dewberry Engineers Inc., [REDACTED]  
SUBSURFACE UTILITY BY, Accumark, Inc., 3/18

Dewberry Engineers Inc. Fairfax, Virginia HYDRAULIC ENGINEER	Dewberry Engineers Inc. Fairfax, Virginia ROADWAY ENGINEER

REVISED 12/20/19	STATE VA.	ROUTE 64	STATE PROJECT 0064-965-229 R-201,C-501	SHEET NO. 59
---------------------	--------------	-------------	--	-----------------

DESIGN FEATURES RELATING TO CONSTRUCTION OR TO REGULATION AND CONTROL OF TRAFFIC MAY BE SUBJECT TO CHANGE AS DEEMED NECESSARY BY THE DEPARTMENT



- Key Legend**
- |  |  |   |
|--|--|---|
| 1 4" Curb, S'd, CG-3 Req'd.                | 13 Guardrail Terminal, S'd, GR-MGS2 Req'd.       | 26 Remove Exist. Structure                              |
| 2 Conc. Raised Median, S'd, MS-1 Req'd.    | 14 Guardrail, S'd, GR-10, Type I Req'd.          | 27 Remove Exist. Pipe                                   |
| 3 Conc. Raised Median, S'd, MS-1A Req'd.   | 15 Guardrail, S'd, GR-10, Type II Req'd.         | 28 Remove Exist. Pole                                   |
| 4 Asphalt Concrete Curb, S'd, MC-3B Req'd. | 16 Guardrail, S'd, GR-10, Type III Req'd.        | 29 Adjust Exist. Structure                              |
| 5 Underdrain Endwall, S'd, EW-12 Req'd.    | 17 Trailing End Terminal, S'd, GR-MGS3 Req'd.    | 30 Clean Out Exist. Structure                           |
| 6 Median Underdrain, S'd, UD-2 Req'd.      | 18 Fixed Object Att. S'd, GR-FOA-2 Ty. I Req'd.  | 31 Clean Out Existing Pipe                              |
| 7 Pavement Underdrain, S'd, UD-4 Req'd.    | 19 Fixed Object Att. S'd, GR-FOA-2 Ty. II Req'd. | 32 Pipe To Be Removed                                   |
| 8 Crossdrain, S'd, CD-1 Req'd.             | 20 Guardrail, S'd, GR-MGS4 Req'd.                | 33 Pipe To Be Abandoned and Plugged                     |
| 9 Crossdrain, S'd, CD-2 Req'd.             | 21 Conc. Median Barrier, S'd, MB-7D Req'd.       | 34 Stone For Erosion Control, S'd, EC-I Class I Req'd.  |
| 10 VDOT Fence, S'd, FE-W2 Req'd.           | 22 Conc. Median Barrier, S'd, MB-7F Req'd.       | 35 Stone For Erosion Control, S'd, EC-I Class II Req'd. |
| 11 Guardrail, S'd, GR-MGS1 Req'd.          | 23 Bridge Pler Protection, BPPS-1 Req'd.         | 36 Stone For Erosion Control, S'd, EC-I Class A Req'd.  |
| 12 Guardrail, S'd, GR-MGS1A Req'd.         | 24 Remove Exist. Guardrail                       | 37 S'd, EC-3 Type B Outlet Protection Req'd.            |
|  | 25 Remove Exist. Fence                           |   |

- |  |  |                             |
|--|--|-----------------------------|
| 38 Fixed Object Att. S'd, GR-FOA-1 Ty. I Req'd.  |  | Denotes Full Depth Pavement |
| 39 Fixed Object Att. S'd, GR-FOA-1 Ty. II Req'd. |  | Denotes Pavement Demolition |
|  |  | Denotes Pavement Overlay    |
|  |  | Denotes Milling and Overlay |
|  |  | Denotes Gravel              |

**REFERENCES**  
(PROFILES, DETAIL & DRAINAGE DESCRIPTION SHEETS, ETC.)

Alignment Data	16
Erosion & Sediment Control	2D
I-64 Profiles	59A
Drainage Descriptions	67
Storm Sewer Profiles	68
Ditch Tabulations	69
Noise Barrier Plan & Profiles	70

SCALE: 0 25' 50'

PROJECT: 0064-965-229  
SHEET NO.: 59

Match Line - Sta. 1411+50 - See Sheet 58

Match Line - See Sheet 59(1)

Match Line - Sta. 1418+50 - See Sheet 60

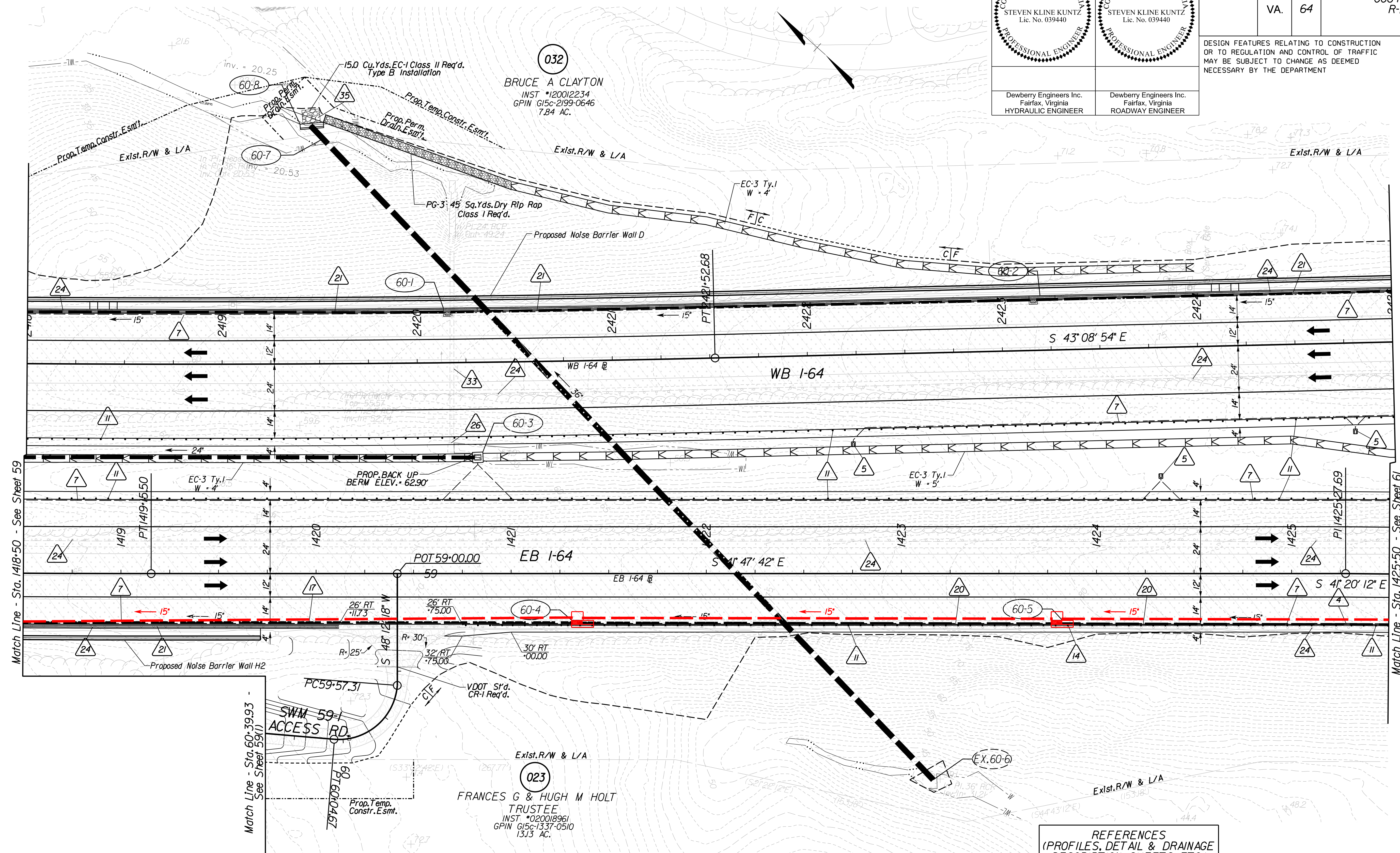


PROJECT MANAGER  
SURVEYED BY, Dewberry Engineers Inc., 2/18  
DESIGNED BY Dewberry Engineers Inc.,  
SUBSURFACE UTILITY BY, Accumark, Inc., 3/18

 STEVEN KLINE KUNTZ Lic. No. 039440 PROFESSIONAL ENGINEER	 STEVEN KLINE KUNTZ Lic. No. 039440 PROFESSIONAL ENGINEER

REVISED 12/20/19	STATE VA.	ROUTE 64	STATE PROJECT 0064-965-229 R-201,C-501	SHEET NO. 60
---------------------	--------------	-------------	--	-----------------

DESIGN FEATURES RELATING TO CONSTRUCTION OR TO REGULATION AND CONTROL OF TRAFFIC MAY BE SUBJECT TO CHANGE AS DEEMED NECESSARY BY THE DEPARTMENT



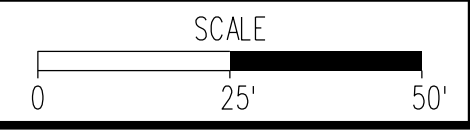
Key Legend

- |  |  |   |
|--|--|---|
| 1 4" Curb, S'd, CG-3 Req'd.                | 13 Guardrail Terminal, S'd, GR-MGS2 Req'd.       | 26 Remove Exist. Structure                              |
| 2 Conc. Raised Median, S'd, MS-1 Req'd.    | 14 Guardrail, S'd, GR-10, Type I Req'd.          | 27 Remove Exist. Pipe                                   |
| 3 Conc. Raised Median, S'd, MS-1A Req'd.   | 15 Guardrail, S'd, GR-10, Type II Req'd.         | 28 Remove Exist. Pole                                   |
| 4 Asphalt Concrete Curb, S'd, MC-3B Req'd. | 16 Guardrail, S'd, GR-10, Type III Req'd.        | 29 Adjust Exist. Structure                              |
| 5 Underdrain Endwall, S'd, EW-12 Req'd.    | 17 Trailing End Terminal, S'd, GR-MGS3 Req'd.    | 30 Clean Out Exist. Structure                           |
| 6 Median Underdrain, S'd, UD-2 Req'd.      | 18 Fixed Object Att. S'd, GR-FOA-2 Ty. I Req'd.  | 31 Clean Out Existing Pipe                              |
| 7 Pavement Underdrain, S'd, UD-4 Req'd.    | 19 Fixed Object Att. S'd, GR-FOA-2 Ty. II Req'd. | 32 Pipe To Be Removed                                   |
| 8 Crossdrain, S'd, CD-1 Req'd.             | 20 Guardrail, S'd, GR-MGS4 Req'd.                | 33 Pipe To Be Abandoned and Plugged                     |
| 9 Crossdrain, S'd, CD-2 Req'd.             | 21 Conc. Median Barrier, S'd, MB-7D Req'd.       | 34 Stone For Erosion Control, S'd, EC-1 Class I Req'd.  |
| 10 VDOT Fence, S'd, FE-W2 Req'd.           | 22 Conc. Median Barrier, S'd, MB-7F Req'd.       | 35 Stone For Erosion Control, S'd, EC-1 Class II Req'd. |
| 11 Guardrail, S'd, GR-MGS1 Req'd.          | 23 Bridge Pler Protection, BPPS-1 Req'd.         | 36 Stone For Erosion Control, S'd, EC-1 Class A Req'd.  |
| 12 Guardrail, S'd, GR-MGS1A Req'd.         | 24 Remove Exist. Guardrail                       | 37 S'd, EC-3 Type B Outlet Protection Req'd.            |
|  | 25 Remove Exist. Fence                           |   |

- |  |                                      |
|--|--------------------------------------|
|  | Denotes Full Depth Pavement          |
|  | Denotes Pavement Demolition          |
|  | Denotes Pavement Overlay             |
|  | Denotes Milling and Overlay          |
|  | Denotes Gravel                       |
|  | Denotes Construction Limits In Cuts  |
|  | Denotes Construction Limits In Fills |

REFERENCES  
(PROFILES, DETAIL & DRAINAGE DESCRIPTION SHEETS, ETC.)

- |                               |        |
|-------------------------------|--------|
| Alignment Data                | 1G     |
| Erosion & Sediment Control    | 2D     |
| SWM *59-1 Detail              | 2B(21) |
| I-64 Profiles                 | 60A    |
| Drainage Descriptions         | 67     |
| Storm Sewer Profiles          | 68     |
| Ditch Tabulations             | 69     |
| Noise Barrier Plan & Profiles | 70     |



PROJECT 0064-965-229	SHEET NO. 60
-------------------------	-----------------

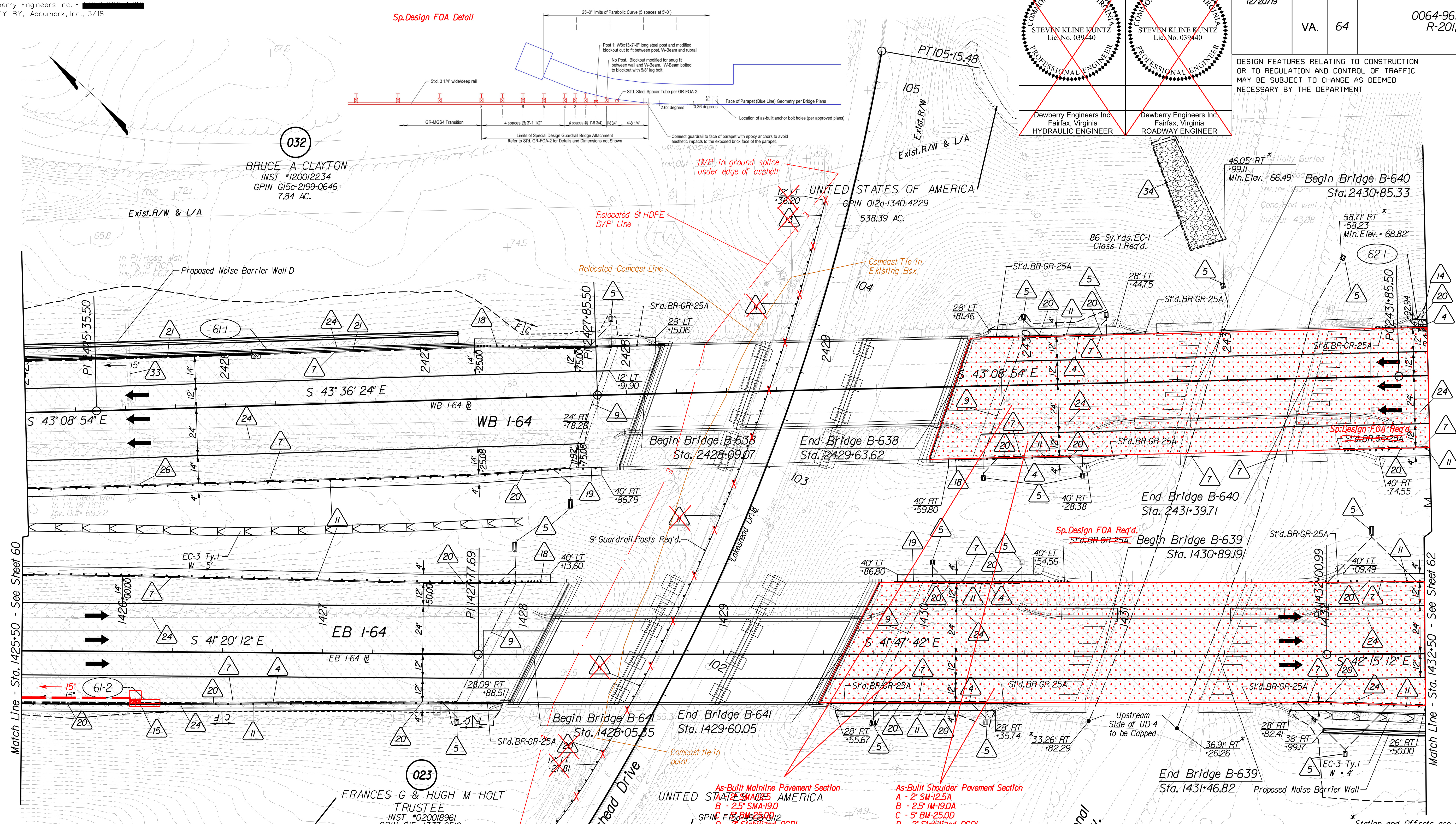


PROJECT MANAGER  
SURVEYED BY, Dewberry Engineers Inc., 2/18  
DESIGNED BY Dewberry Engineers Inc.,  
SUBSURFACE UTILITY BY, Accumark, Inc., 3/18

 STEVEN KLINE KUNTZ Lic. No. 039440 PROFESSIONAL ENGINEER	 STEVEN KLINE KUNTZ Lic. No. 039440 PROFESSIONAL ENGINEER

REVISED	STATE	ROUTE	STATE	PROJECT	SHEET NO.
2/11/19 12/20/19	VA.	64		0064-965-229 R-201,C-501	61

DESIGN FEATURES RELATING TO CONSTRUCTION OR TO REGULATION AND CONTROL OF TRAFFIC MAY BE SUBJECT TO CHANGE AS DEEMED NECESSARY BY THE DEPARTMENT



- Key Legend
- |  |   |   |
|--|---|---|
| 1 4" Curb, S'd, CG-3 Req'd.                | 13 Guardrail Terminal, S'd, GR-MGS2 Req'd.        | 26 Remove Exist. Structure                              |
| 2 Conc. Raised Median, S'd, MS-1 Req'd.    | 14 Guardrail, S'd, GR-10, Type I Req'd.           | 27 Remove Exist. Pipe                                   |
| 3 Conc. Raised Median, S'd, MS-1A Req'd.   | 15 Guardrail, S'd, GR-10, Type II Req'd.          | 28 Remove Exist. Pole                                   |
| 4 Asphalt Concrete Curb, S'd, MC-3B Req'd. | 16 Guardrail, S'd, GR-10, Type III Req'd.         | 29 Adjust Exist. Structure                              |
| 5 Underdrain Endwall, S'd, EW-12 Req'd.    | 17 Trailing End Terminal, S'd, GR-MGS3 Req'd.     | 30 Clean Out Exist. Structure                           |
| 6 Median Underdrain, S'd, UD-2 Req'd.      | 18 Fixed Object Att., S'd, GR-FOA-2 Ty. I Req'd.  | 31 Clean Out Existing Pipe                              |
| 7 Pavement Underdrain, S'd, UD-4 Req'd.    | 19 Fixed Object Att., S'd, GR-FOA-2 Ty. II Req'd. | 32 Pipe To Be Removed                                   |
| 8 Crossdrain, S'd, CD-1 Req'd.             | 20 Guardrail, S'd, GR-MGS4 Req'd.                 | 33 Pipe To Be Abandoned and Plugged                     |
| 9 Crossdrain, S'd, CD-2 Req'd.             | 21 Conc. Median Barrier, S'd, MB-7D Req'd.        | 34 Stone For Erosion Control, S'd, EC-1 Class I Req'd.  |
| 10 VDOT Fence, S'd, FE-W2 Req'd.           | 22 Conc. Median Barrier, S'd, MB-7F Req'd.        | 35 Stone For Erosion Control, S'd, EC-1 Class II Req'd. |
| 11 Guardrail, S'd, GR-MGS1 Req'd.          | 23 Bridge Pter Protection, BPPS-1 Req'd.          | 36 Stone For Erosion Control, S'd, EC-1 Class AI Req'd. |
| 12 Guardrail, S'd, GR-MGS1A Req'd.         | 24 Remove Exist. Guardrail                        | 37 S'd, EC-3 Type B Outlet Protection Req'd.            |
|  | 25 Remove Exist. Fence                            |   |

- |   |                             |
|---|-----------------------------|
| 38 Fixed Object Att., S'd, GR-FOA-1 Ty. I Req'd.  | Denotes Full Depth Pavement |
| 39 Fixed Object Att., S'd, GR-FOA-1 Ty. II Req'd. | Denotes Pavement Demolition |
|   | Denotes Pavement Overlay    |
|   | Denotes Milling and Overlay |
|   | Denotes Gravel              |
- C --- Denotes Construction Limits In Cuts  
E --- Denotes Construction Limits In Fills

Station and Offsets are Based on I-64

REFERENCES  
(PROFILES, DETAIL & DRAINAGE DESCRIPTION SHEETS, ETC.)

Alignment Data	1G
Erosion & Sediment Control	2D
I-64 Westbound Profiles	61A
I-64 Eastbound Profiles	61B
Drainage Descriptions	67
Storm Sewer Profiles	68
Ditch Tabulations	69
Noise Barrier Plan & Profiles	70

SCALE	PROJECT	SHEET NO.
0 25' 50'	0064-965-229	61

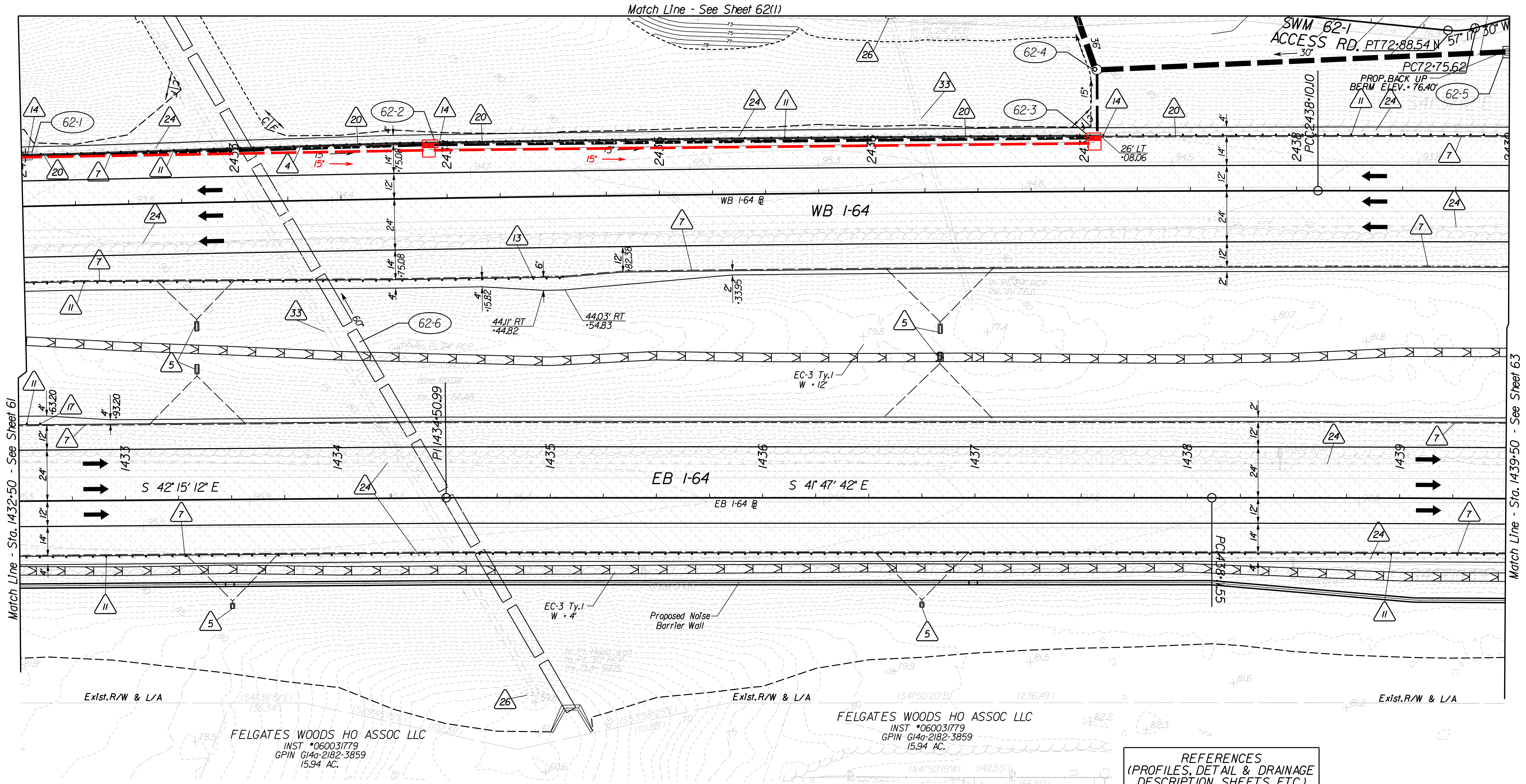


PROJECT MANAGER [REDACTED]  
SURVEYED BY, Dewberry Engineers Inc., 2/18  
DESIGNED BY Dewberry Engineers Inc., [REDACTED]  
SUBSURFACE UTILITY BY, Accumark, Inc., 3/18

Dewberry Engineers Inc. Fairfax, Virginia HYDRAULIC ENGINEER	Dewberry Engineers Inc. Fairfax, Virginia ROADWAY ENGINEER

REVISED 08/23/19	STATE VA.	ROUTE 64	STATE PROJECT 0064-965-229 R-201,C-501	SHEET NO. 62
---------------------	--------------	-------------	--	-----------------

DESIGN FEATURES RELATING TO CONSTRUCTION OR TO REGULATION AND CONTROL OF TRAFFIC MAY BE SUBJECT TO CHANGE AS DEEMED NECESSARY BY THE DEPARTMENT



- Key Legend**
- |  |   |   |
|--|---|---|
| 1 4" Curb, S'd, CG-3 Req'd.                | 13 Guardrail Terminal, S'd, GR-MGS2 Req'd.        | 26 Remove Exist. Structure                              |
| 2 Conc. Raised Median, S'd, MS-1 Req'd.    | 14 Guardrail, S'd, GR-10, Type I Req'd.           | 27 Remove Exist. Pipe                                   |
| 3 Conc. Raised Median, S'd, MS-1A Req'd.   | 15 Guardrail, S'd, GR-10, Type II Req'd.          | 28 Remove Exist. Pole                                   |
| 4 Asphalt Concrete Curb, S'd, MC-3B Req'd. | 16 Guardrail, S'd, GR-10, Type III Req'd.         | 29 Adjust Exist. Structure                              |
| 5 Underdrain Endwall, S'd, EW-12 Req'd.    | 17 Trailing End Terminal, S'd, GR-MGS3 Req'd.     | 30 Clean Out Exist. Structure                           |
| 6 Median Underdrain, S'd, UD-2 Req'd.      | 18 Fixed Object Att., S'd, GR-FOA-2 Ty. I Req'd.  | 31 Clean Out Existing Pipe                              |
| 7 Pavement Underdrain, S'd, UD-4 Req'd.    | 19 Fixed Object Att., S'd, GR-FOA-2 Ty. II Req'd. | 32 Pipe To Be Removed                                   |
| 8 Crossdrain, S'd, CD-1 Req'd.             | 20 Guardrail, S'd, GR-MGS4 Req'd.                 | 33 Pipe To Be Abandoned and Plugged                     |
| 9 Crossdrain, S'd, CD-2 Req'd.             | 21 Conc. Median Barrier, S'd, MB-7D Req'd.        | 34 Stone For Erosion Control, S'd, EC-I Class I Req'd.  |
| 10 VDOT Fence, S'd, FE-W2 Req'd.           | 22 Conc. Median Barrier, S'd, MB-7F Req'd.        | 35 Stone For Erosion Control, S'd, EC-I Class II Req'd. |
| 11 Guardrail, S'd, GR-MGS1 Req'd.          | 23 Bridge Pler Protection, BPPS-1 Req'd.          | 36 Stone For Erosion Control, S'd, EC-I Class A1 Req'd. |
| 12 Guardrail, S'd, GR-MGS1A Req'd.         | 24 Remove Exist. Guardrail                        | 37 S'd, EC-3 Type B Outlet Protection Req'd.            |
|  | 25 Remove Exist. Fence                            |   |

- |   |  |                             |
|---|--|-----------------------------|
| 38 Fixed Object Att., S'd, GR-FOA-1 Ty. I Req'd.  |  | Denotes Full Depth Pavement |
| 39 Fixed Object Att., S'd, GR-FOA-1 Ty. II Req'd. |  | Denotes Pavement Demolition |
|   |  | Denotes Pavement Overlay    |
|   |  | Denotes Milling and Overlay |
|   |  | Denotes Gravel              |
- Denotes Construction Limits In Cuts  
 Denotes Construction Limits In Fills

**REFERENCES**  
(PROFILES, DETAIL & DRAINAGE DESCRIPTION SHEETS, ETC.)

Alignment Data	16
Erosion & Sediment Control	2D
SWM *62-1 Detail	2B(23)
I-64 Profiles	62A
Drainage Descriptions	67
Storm Sewer Profiles	68
Ditch Tabulations	69

SCALE: 0 25' 50'

PROJECT	0064-965-229	SHEET NO.	62
---------	--------------	-----------	----