



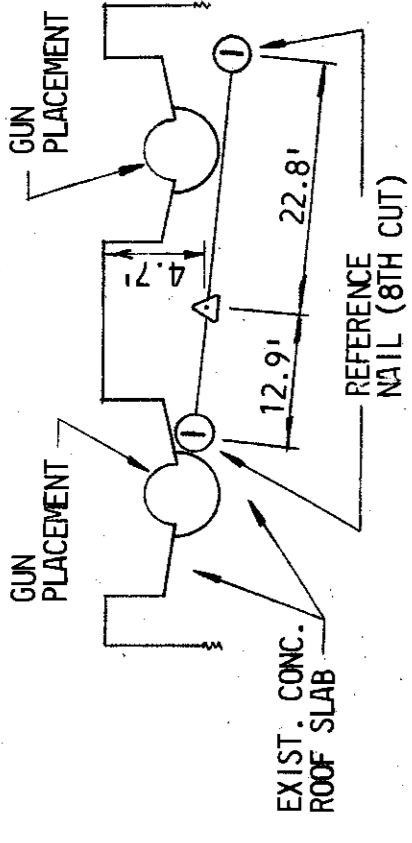
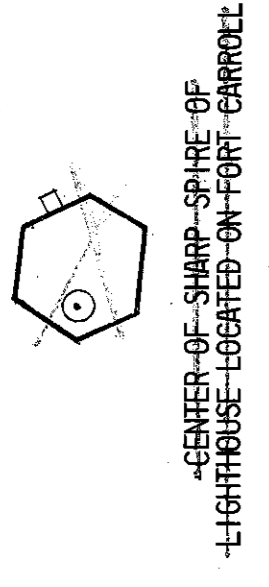
BRIDGE PROTECTION SYSTEMS ATTACHMENT

Baltimore Harbor Outer Crossings Patapsco River Bridge As-Built Plans

Baltimore, MD

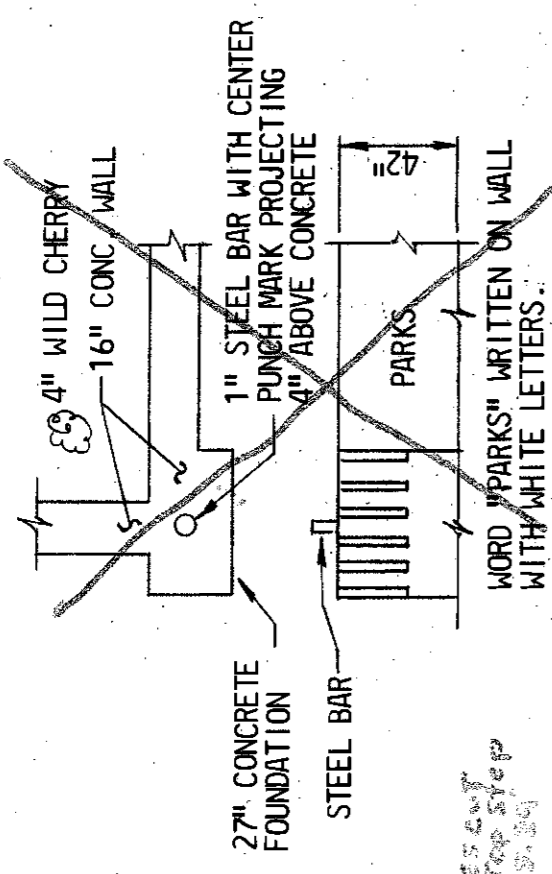
DCA24MM031

(8 pages)



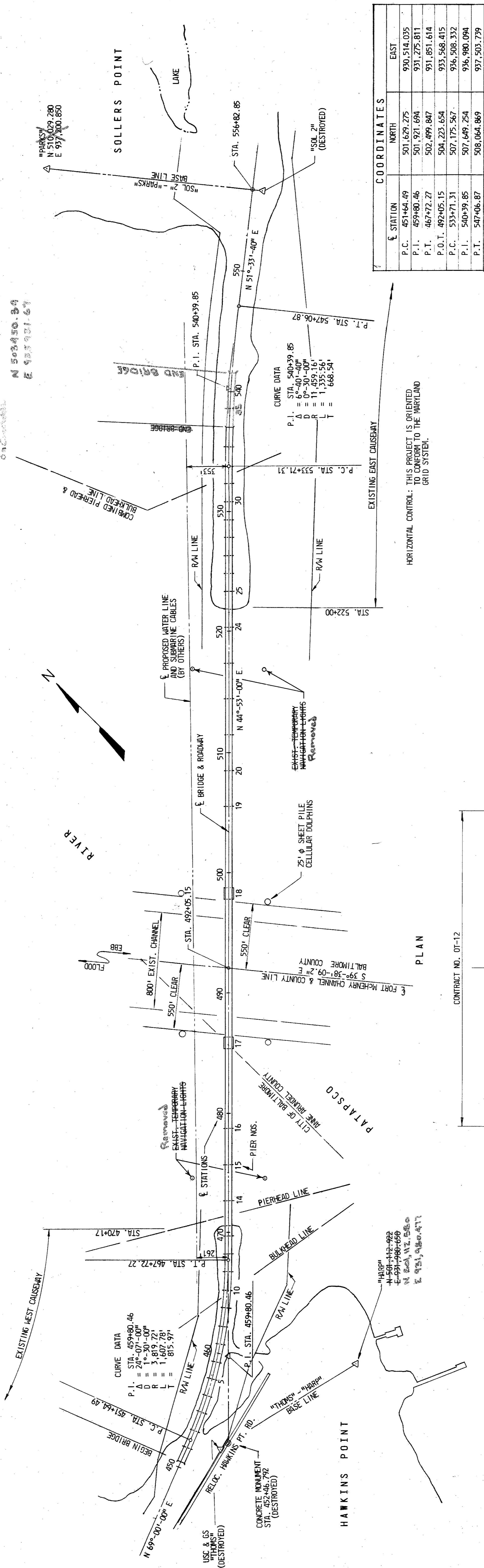
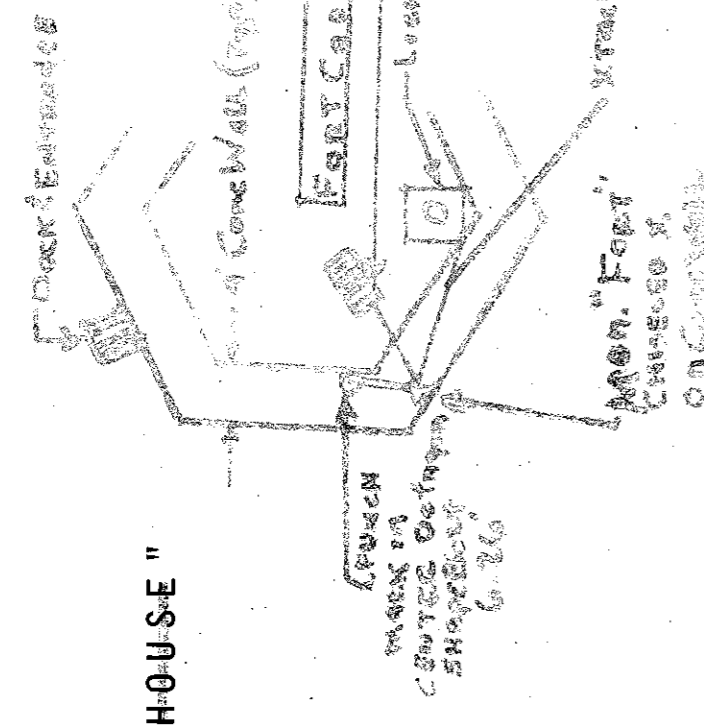
MONUMENT - "HARP"

MONUMENT - "FORT CARROLL LIGHTHOUSE"



MONUMENT - "PARKS"

Destroyed



STATE OF MARYLAND
DEPARTMENT OF TRANSPORTATION
STATE HIGHWAY ADMINISTRATION
BALTIMORE, MD.

**BALTIMORE HARBOR OUTER CROSSING
PATAPSCO RIVER BRIDGE**

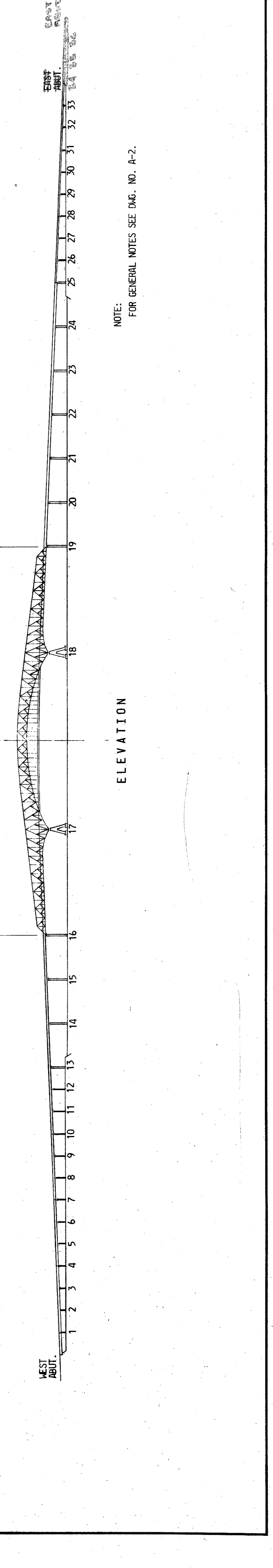
GENERAL PROJECT PLAN

SCALE 1" = 400' DATE JAN., 1972 CONTRACT OT-12

MADE BY E.R.A.
TRACED BY E.R.A.
CHECKED BY S.J.S.

E. GREINER COMPANY, INC.
CONSULTING ENGINEERS
BALTIMORE, MARYLAND

DRAWING NO. A-3
SHEET NO. 3 OF 79



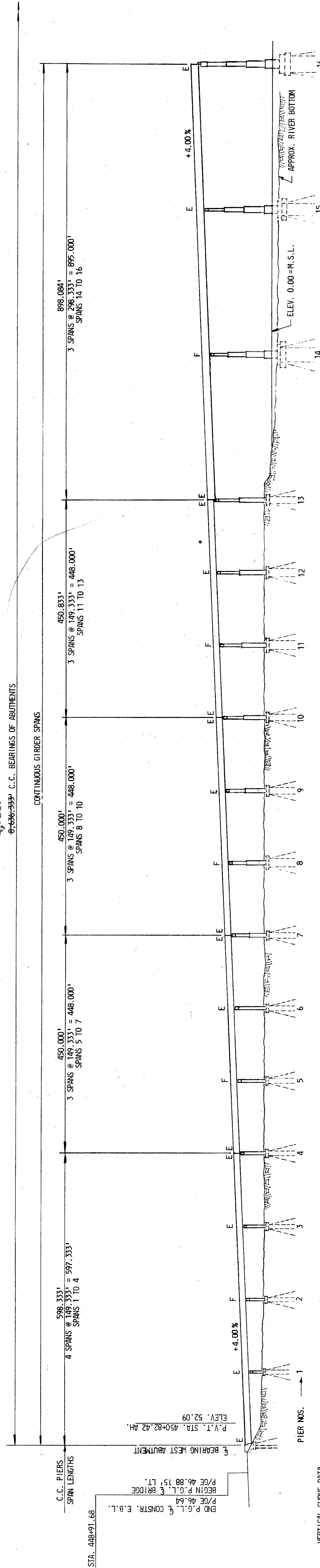
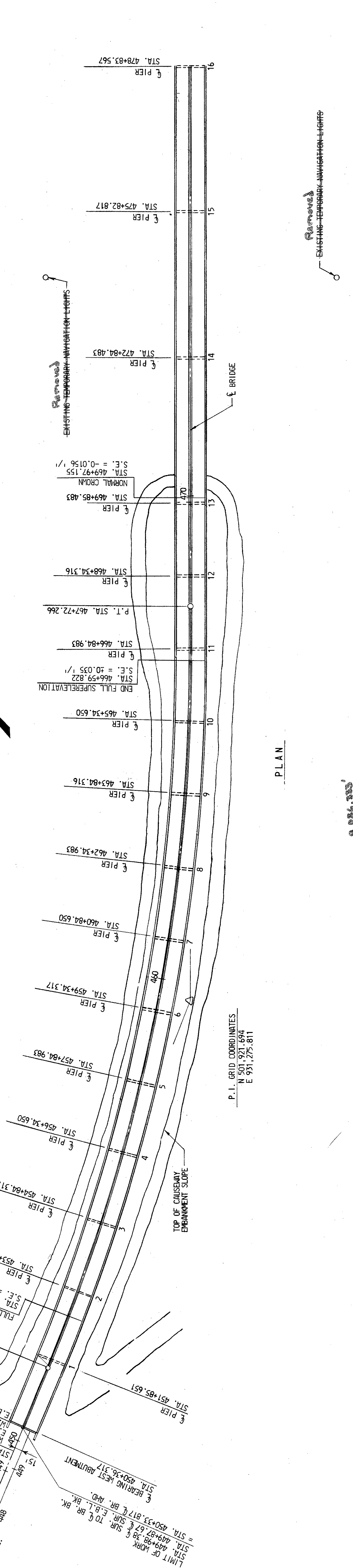
NOTE 'T'
 WARP M.D.L. CROSS SLOPE FROM
 -0.016 TO -0.0156 % BETWEEN
 LIMITS SHOWN.

CURVE DATA
 P.T. = 459+80.460
 $\Delta = 24^{\circ}07'00''$
 $D = 1^{\circ}30'00''$
 $R = 3819.719'$
 $L = 1607.78'$
 $E = 86.762'$
 $S.E. = 0.0055 \%$
 $C = 0.00015'$

SEE NOTE 'T'
 STA. 449+82.38 G. SUR. TO G. BR.
 STA. 449+82.38 G. SUR. TO G. BR.
 STA. 449+82.38 G. SUR. TO G. BR.
 STA. 449+82.38 G. SUR. TO G. BR.
 STA. 449+82.38 G. SUR. TO G. BR.

LIMIT OF WORK
 STA. 449+82.38 G. SUR. TO G. BR.
 STA. 449+82.38 G. SUR. TO G. BR.
 STA. 449+82.38 G. SUR. TO G. BR.
 STA. 449+82.38 G. SUR. TO G. BR.

BEARINGS
 STA. 449+82.38 G. SUR. TO G. BR.
 STA. 449+82.38 G. SUR. TO G. BR.
 STA. 449+82.38 G. SUR. TO G. BR.
 STA. 449+82.38 G. SUR. TO G. BR.



STATE OF MARYLAND
 DEPARTMENT OF TRANSPORTATION
 STATE HIGHWAY ADMINISTRATION
 BALTIMORE, MD

BALTIMORE HARBOR OUTER CROSSING
 PATAPSCO RIVER BRIDGE
 GENERAL PLAN AND ELEVATION - I

REVISIONS

SCALE 1" = 100' DATE JAN., 1972 CONTRACT DT-12

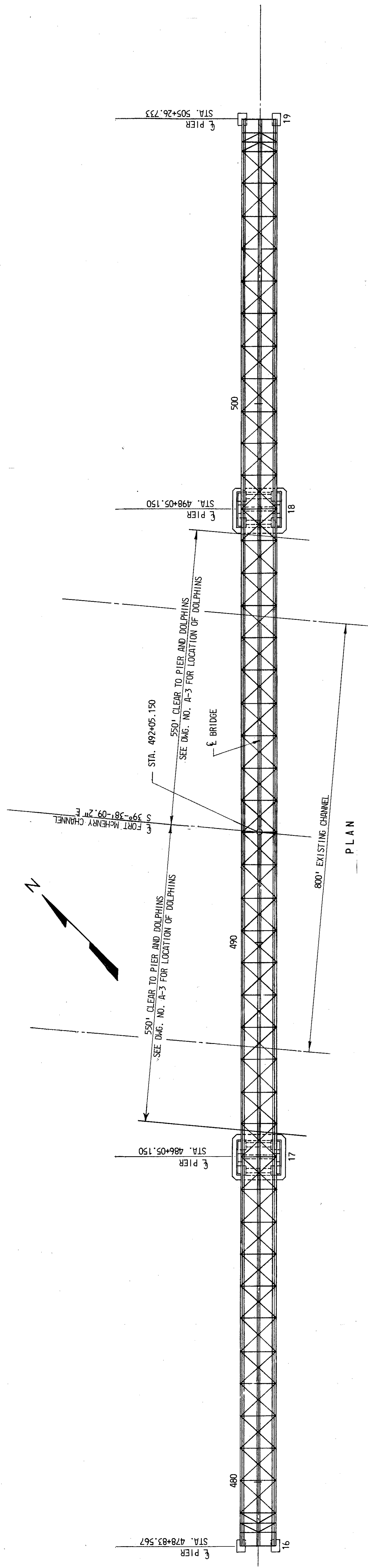
MADE BY E.R.A.
 TRACED BY C.E.S.
 CHECKED BY S.J.S. & J.M.H.

E. GREINER COMPANY, INC.
 CONSULTING ENGINEERS
 BALTIMORE, MARYLAND

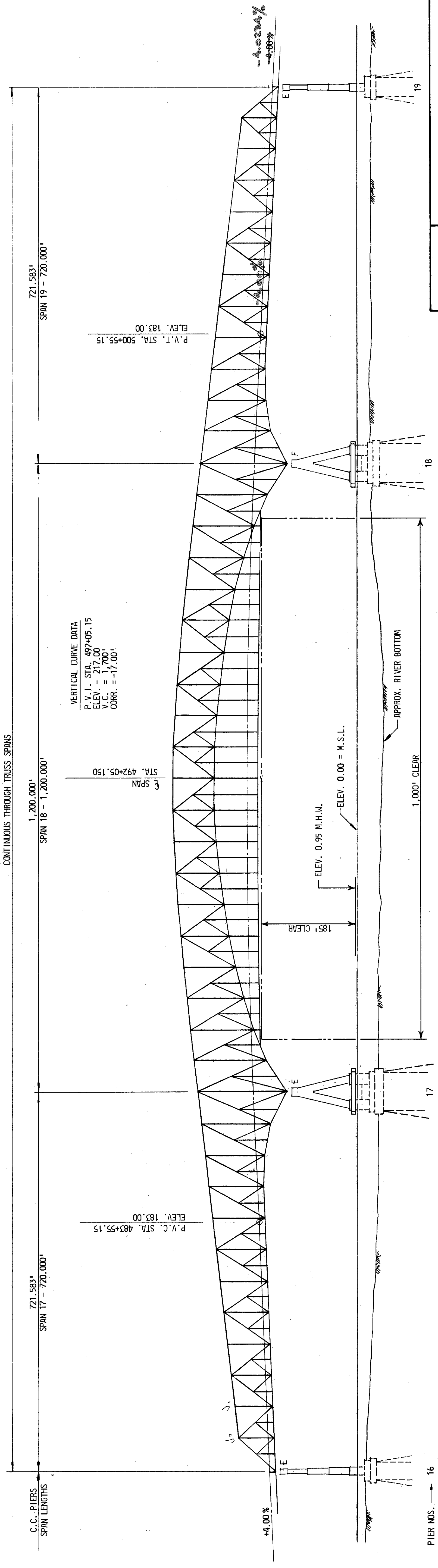
DRAWING NO. B-4
 SHEET NO. 4 OF 79
 INDEXED

File No. _____ Pocket No. _____ Folder No. _____

NOTES:
 ALL DIMENSIONS & SPAN LENGTHS
 SHOWN ARE HORIZONTAL.
 FOR GENERAL NOTES SEE DMG. NO. A-2.
 ALL elevations shall show to the
 datum of the bridge at Contract 67-12.



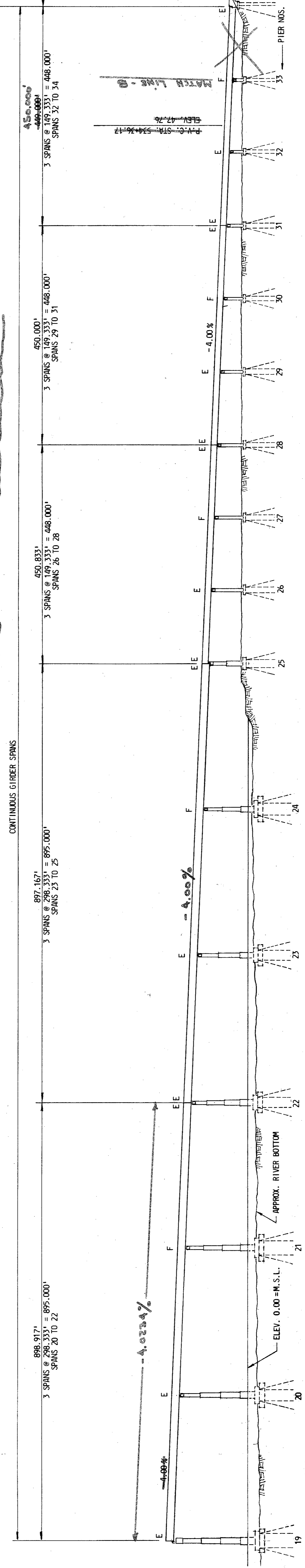
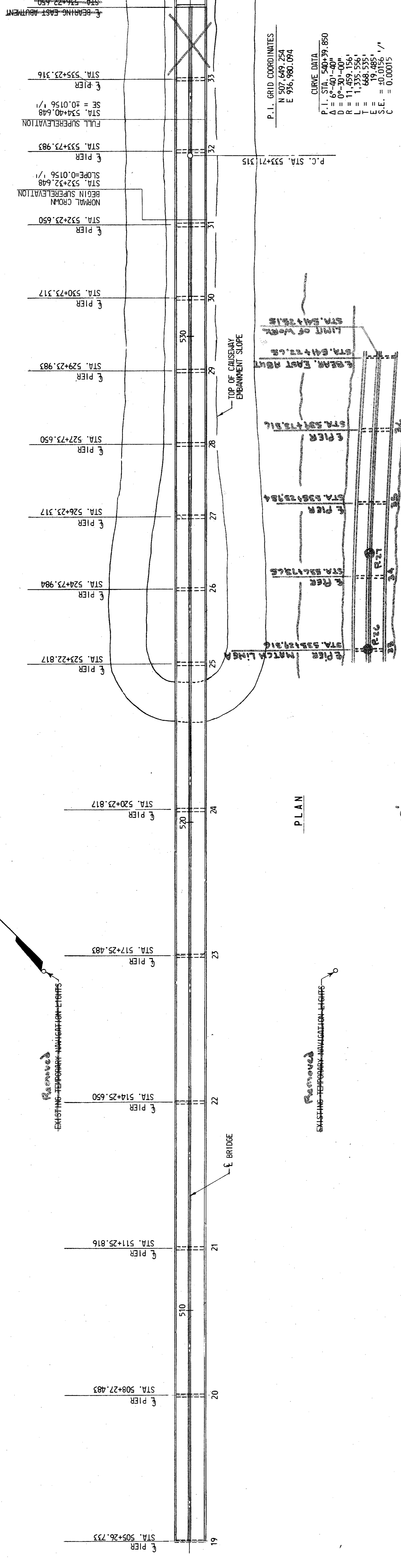
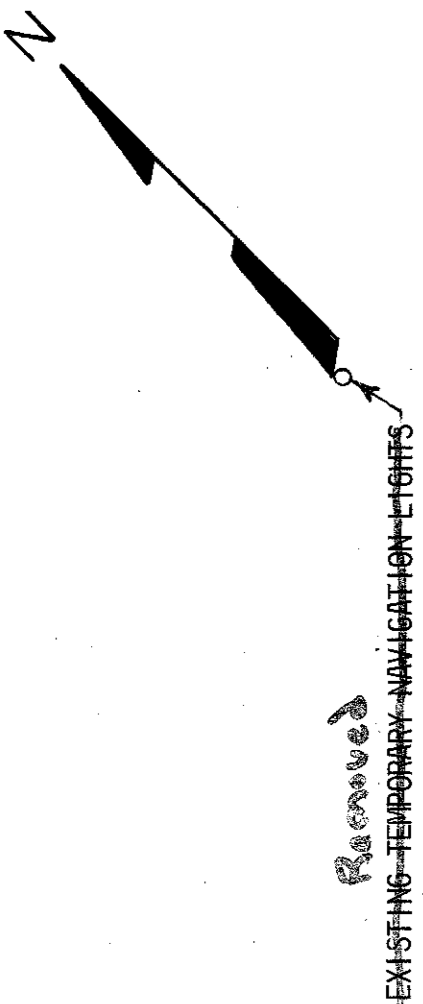
1,000' C.C. BEARINGS OF ABUTMENTS
8-66-3334



NOTES:
ALL DIMENSIONS & SPAN LENGTHS
SHOWN ARE HORIZONTAL.
FOR GENERAL NOTES SEE DIAG. NO. A-2.
All dimensions are shown subject to
Note 15 Draw No. 2 Contract 87-12.

REVISIONS	STATE OF MARYLAND DEPARTMENT OF TRANSPORTATION STATE HIGHWAY ADMINISTRATION		
	BALTIMORE HARBOR OUTER CROSSING PATAPSCO RIVER BRIDGE		
GENERAL PLAN AND ELEVATION - II		SCALE 1" = 100'	DATE JAN., 1972
MADE BY: E.R.A.		CONTRACT OT-12	
TRACED BY: C.E.S.		E. BREINER COMPANY, INC. CONSULTING ENGINEERS BALTIMORE, MARYLAND	
CHECKED BY: S.J.S. & J.M.H.		DRAWING NO. A-5	
		SHEET NO. 5 OF 79	
		INDEXED	

File No. _____ Pocket No. _____ Folder No. _____



STATE OF MARYLAND
DEPARTMENT OF TRANSPORTATION
STATE HIGHWAY ADMINISTRATION
 BALTIMORE, MD.

BALTIMORE HARBOR OUTER CROSSING
PATAPSCO RIVER BRIDGE

GENERAL PLAN AND ELEVATION - III

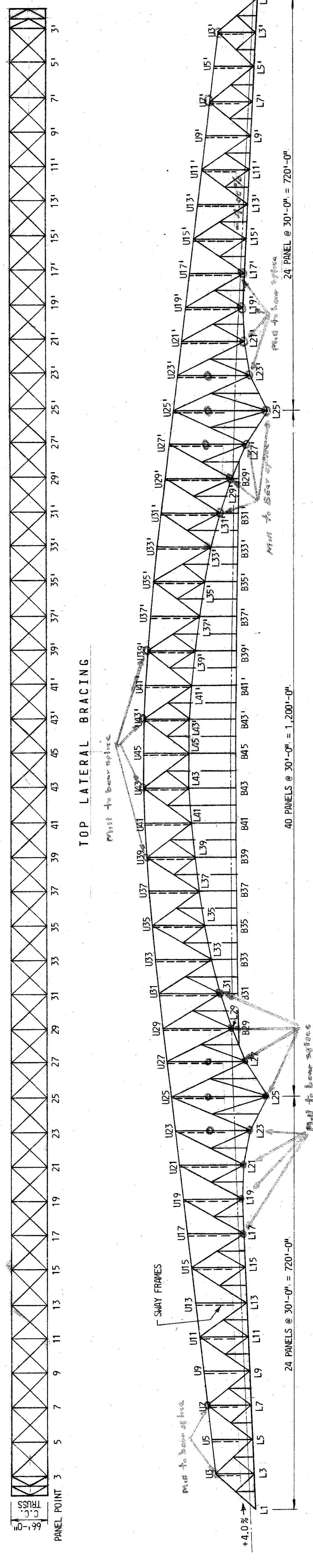
MADE BY: E.R.A.
 TRACED BY: C.E.S.
 CHECKED BY: S.J.S. & J.K.H.

SCALE 1" = 100' DATE JAN., 1972 CONTRACT 0T-12

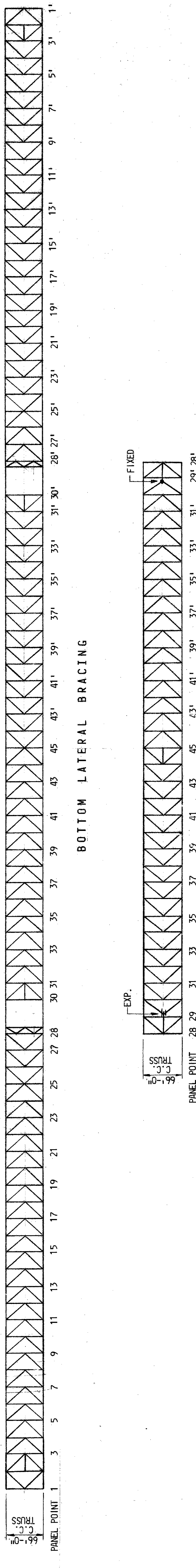
DRAWING NO. A-6
 SHEET NO. 6 OF 79
 INDEXED

REVISIONS
 A-E

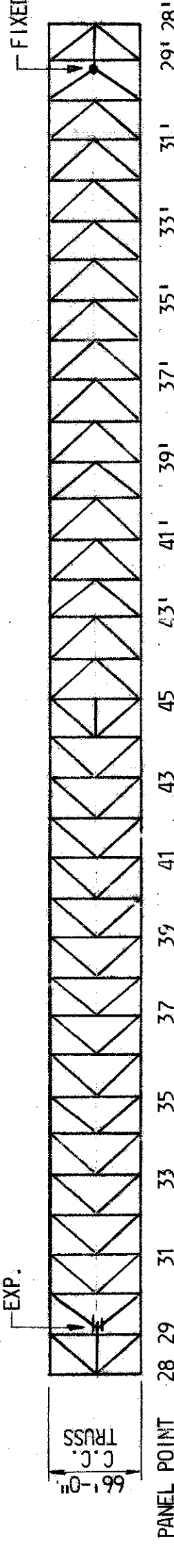
VERTICAL CURVE DATA
 P.V.I. STA. 550+34.483
 ELEV. = 27.26
 V.C. = 1000'
 CORR. = +4.58
 GRADES = -4.00% to -0.35%



ELEVATION



SUSPENDED ROADWAY LATERAL BRACING

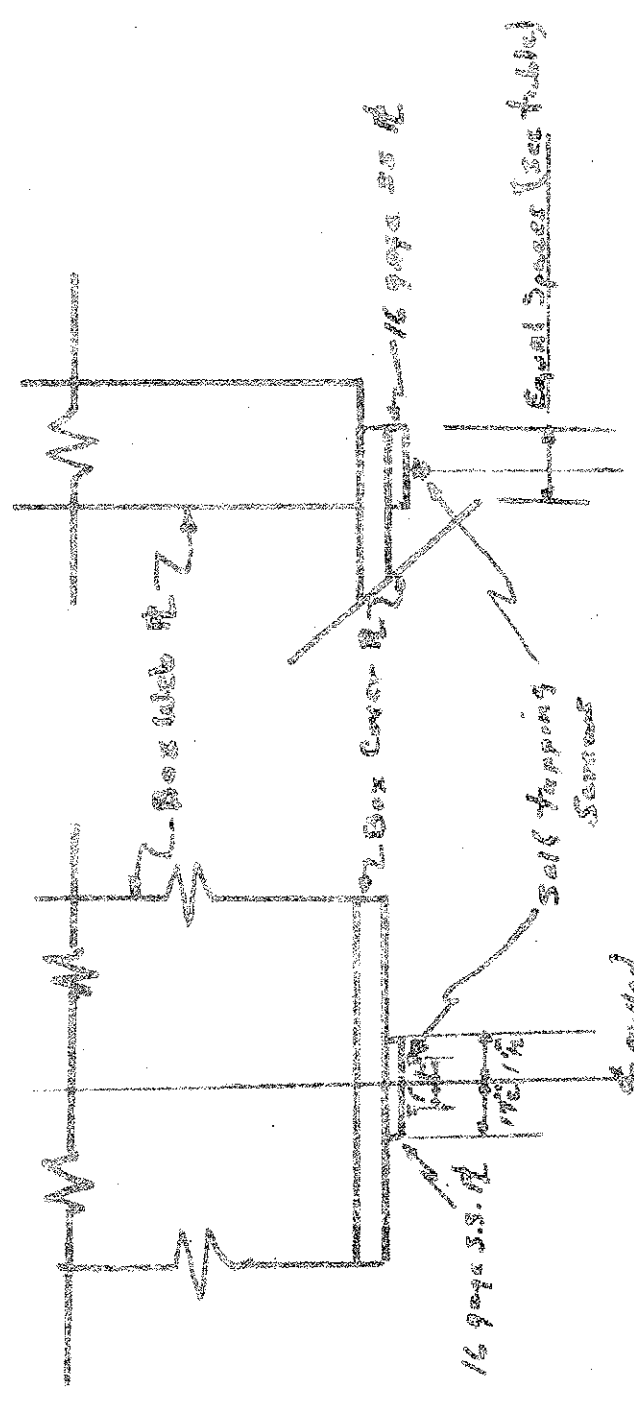


PANEL POINT	PROFILE GRADE	UPPER CHORD	SUBDIVIDED POINTS	LOWER CHORD	SUSPENDED ROADWAY POINTS	PANEL POINT	PROFILE GRADE	UPPER CHORD	SUBDIVIDED POINTS	LOWER CHORD	SUSPENDED ROADWAY POINTS
1	164.200	-	-	152.500	-	26	192.355	-	237.470	151.720	-
2	165.400	-	187.200	153.700	-	27	193.139	311.800	-	170.540	-
3	166.600	221.900	-	154.900	-	28	193.880	-	257.090	186.460	186.460
4	167.800	-	189.600	156.100	-	29	194.579	318.900	-	202.380	187.159
5	169.000	229.400	-	157.300	-	30	195.235	-	270.640	212.380	187.815
6	170.200	-	197.100	158.500	-	31	195.849	325.900	-	222.380	188.429
7	171.400	236.900	-	159.700	-	32	196.421	-	281.160	229.400	189.001
8	172.600	-	199.500	160.900	-	33	196.951	332.600	-	236.420	189.531
9	173.800	244.400	-	162.100	-	34	197.438	-	287.860	241.465	190.018
10	175.000	-	207.000	163.300	-	35	197.882	339.300	-	246.510	190.462
11	176.200	251.900	-	164.500	-	36	198.285	-	297.950	251.555	190.865
12	177.400	-	209.400	165.700	-	37	198.645	344.800	-	256.600	191.225
13	178.600	259.400	-	166.900	-	38	198.962	-	305.450	260.050	191.542
14	179.800	-	216.900	168.100	-	39	199.238	350.300	-	263.500	191.818
15	181.000	266.900	-	169.300	-	40	199.471	-	310.350	266.950	192.051
16	182.200	-	219.300	170.500	-	41	199.661	354.200	-	270.400	192.241
17	183.398	274.400	-	171.700	-	42	199.809	-	314.250	272.350	192.389
18	184.562	-	226.800	172.865	-	43	199.915	358.100	-	274.300	192.495
19	185.685	281.900	-	174.030	-	44	199.979	-	316.200	274.300	192.559
20	186.765	-	231.715	175.165	-	45	200.000	358.100	-	274.300	192.580
21	187.802	289.400	-	176.300	-						
22	188.798	-	234.500	176.700	-						
23	189.751	296.900	-	177.100	-						
24	190.661	-	232.750	177.000	-						
25	191.529	304.400	-	177.900	-						

ELEVATIONS

Connectors: 18-8 Self Tapping Screws Spaced 8" apart
 1/2" dia. metal screws w/ washers.
 Spacing: 0.2 x 3 ft
 Length: 3/4"
 No. of Screws - Cam. Co. No. 912 448313

NOTES:
 FOR GENERAL NOTES SEE DWG. NO. A-2.
 ALL ELEVATIONS FROM SEA LEVEL UNLESS OTHERWISE NOTED.
 DRAWING BY: J. E. REICHERT
 CHECKED BY: C.P.G.



Member	Length	Area	Weight
U1	30'	12.5	125
U2	30'	12.5	125
U3	30'	12.5	125
U4	30'	12.5	125
U5	30'	12.5	125
U6	30'	12.5	125
U7	30'	12.5	125
U8	30'	12.5	125
U9	30'	12.5	125
U10	30'	12.5	125
U11	30'	12.5	125
U12	30'	12.5	125
U13	30'	12.5	125
U14	30'	12.5	125
U15	30'	12.5	125
U16	30'	12.5	125
U17	30'	12.5	125
U18	30'	12.5	125
U19	30'	12.5	125
U20	30'	12.5	125
U21	30'	12.5	125
U22	30'	12.5	125
U23	30'	12.5	125
U24	30'	12.5	125
U25	30'	12.5	125
U26	30'	12.5	125
U27	30'	12.5	125
U28	30'	12.5	125
U29	30'	12.5	125
U30	30'	12.5	125
U31	30'	12.5	125
U32	30'	12.5	125
U33	30'	12.5	125
U34	30'	12.5	125
U35	30'	12.5	125
U36	30'	12.5	125
U37	30'	12.5	125
U38	30'	12.5	125
U39	30'	12.5	125
U40	30'	12.5	125
U41	30'	12.5	125
U42	30'	12.5	125
U43	30'	12.5	125
U44	30'	12.5	125
U45	30'	12.5	125
U46	30'	12.5	125
U47	30'	12.5	125
U48	30'	12.5	125
U49	30'	12.5	125
U50	30'	12.5	125
U51	30'	12.5	125
U52	30'	12.5	125
U53	30'	12.5	125
U54	30'	12.5	125
U55	30'	12.5	125
U56	30'	12.5	125
U57	30'	12.5	125
U58	30'	12.5	125
U59	30'	12.5	125
U60	30'	12.5	125
U61	30'	12.5	125
U62	30'	12.5	125
U63	30'	12.5	125
U64	30'	12.5	125
U65	30'	12.5	125
U66	30'	12.5	125
U67	30'	12.5	125
U68	30'	12.5	125
U69	30'	12.5	125
U70	30'	12.5	125
U71	30'	12.5	125
U72	30'	12.5	125
U73	30'	12.5	125
U74	30'	12.5	125
U75	30'	12.5	125
U76	30'	12.5	125
U77	30'	12.5	125
U78	30'	12.5	125
U79	30'	12.5	125
U80	30'	12.5	125
U81	30'	12.5	125
U82	30'	12.5	125
U83	30'	12.5	125
U84	30'	12.5	125
U85	30'	12.5	125
U86	30'	12.5	125
U87	30'	12.5	125
U88	30'	12.5	125
U89	30'	12.5	125
U90	30'	12.5	125
U91	30'	12.5	125
U92	30'	12.5	125
U93	30'	12.5	125
U94	30'	12.5	125
U95	30'	12.5	125
U96	30'	12.5	125
U97	30'	12.5	125
U98	30'	12.5	125
U99	30'	12.5	125
U100	30'	12.5	125

STATE OF MARYLAND
 DEPARTMENT OF TRANSPORTATION
 STATE HIGHWAY ADMINISTRATION
 BALTIMORE, MD.

BALTIMORE HARBOR OUTER CROSSING
 TRUSS FRAMING AND
 PANEL POINT ELEVATIONS

REVISIONS
 No. 13 only

SCALE: NONE DATE: JAN., 1972 CONTRACT: 01-12

MADE BY: E.R.A.
 TRACED BY: E.R.A.
 CHECKED BY: C.P.G.

E. REICHERT COMPANY, INC.
 CONSULTING ENGINEERS
 BALTIMORE, MARYLAND

DRAWING NO. A-7
 SHEET NO. 7 OF 79
 INDEXED

