



HIGHWAY FACTORS ATTACHMENT

Cross sections on I-64 in the vicinity of the crash

Williamsburg, VA

HWY23MH004

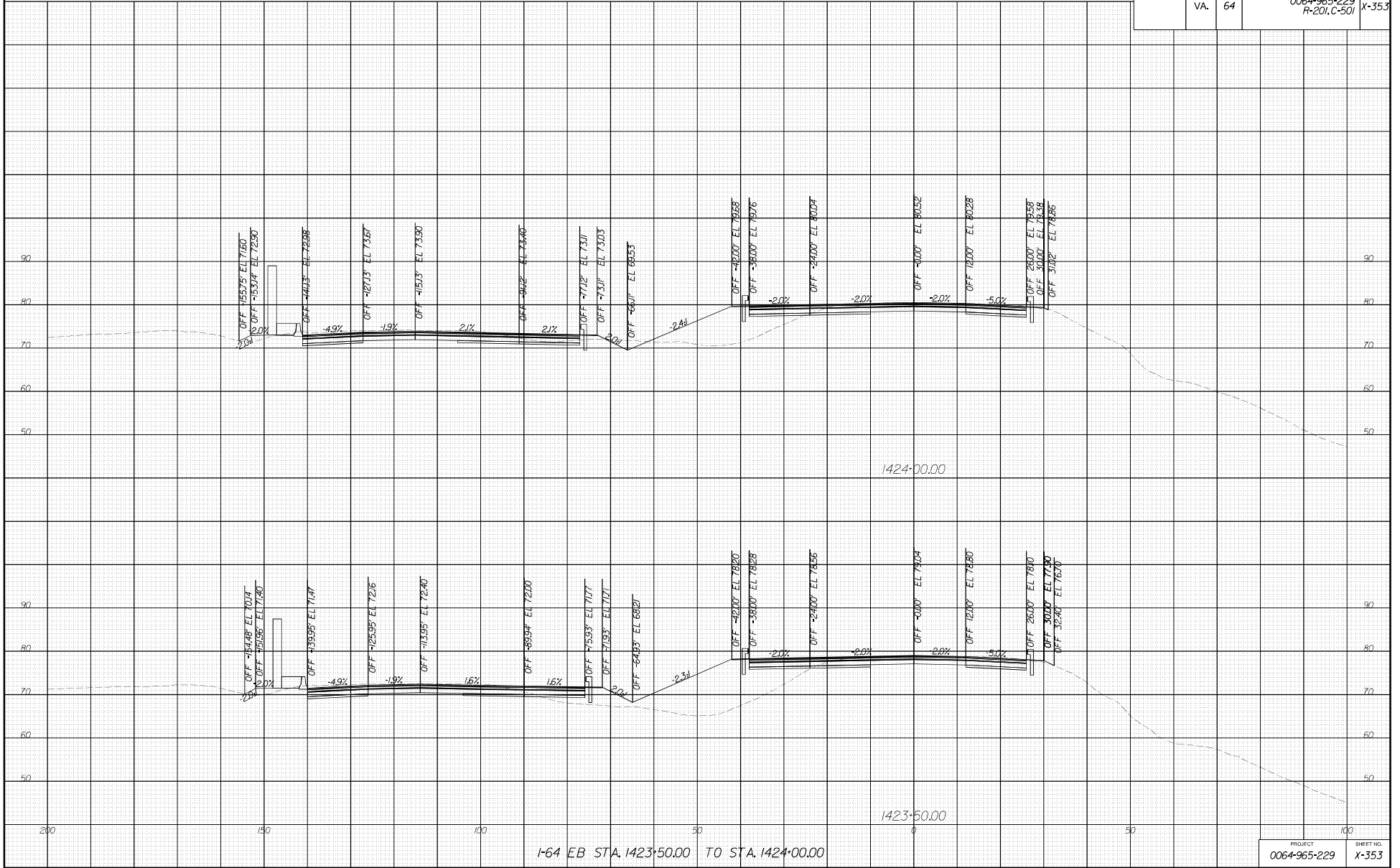
(9 pages)

PROJECT MANAGER [REDACTED]
 SURVEYED BY Dewberry Engineers Inc., 2/18
 DESIGNED BY Dewberry Engineers Inc., [REDACTED]
 SUBSURFACE UTILITY BY Accumark, Inc., 3/18

CROSS SECTIONS
 SCALE 1 IN. = 10 FT

DESIGN FEATURES RELATING TO CONSTRUCTION OR TO REGULATION AND CONTROL OF TRAFFIC MAY BE SUBJECT TO CHANGE AS DEEMED NECESSARY BY THE DEPARTMENT

| | | | | |
|---------------------|--------------|-------------|---|--------------------|
| REVISED 12/20/19 | STATE VA. | ROUTE 64 | STATE PROJECT 0064-965-229 R-201.C-501 | SHEET NO. X-353 |
|---------------------|--------------|-------------|---|--------------------|



I-64 EB STA. 1423+50.00 TO STA. 1424+00.00

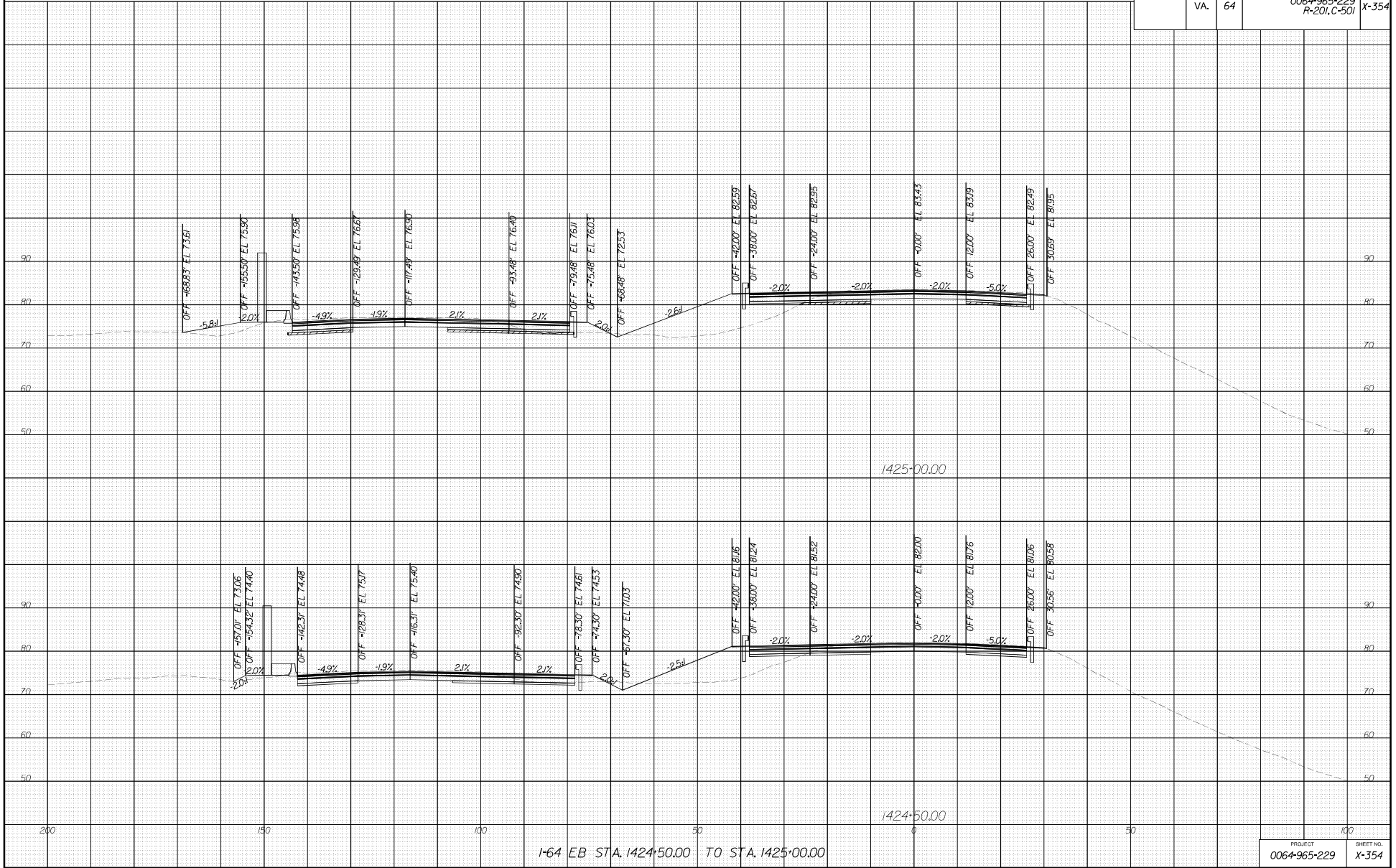
| | |
|-------------------------|--------------------|
| PROJECT 0064-965-229 | SHEET NO. X-353 |
|-------------------------|--------------------|

PROJECT MANAGER [REDACTED]
 SURVEYED BY: Dewberry Engineers Inc., 2/18
 DESIGNED BY: Dewberry Engineers Inc., [REDACTED]
 SUBSURFACE UTILITY BY: Accumark, Inc., 3/18

CROSS SECTIONS
 SCALE 1 IN. = 10 FT

DESIGN FEATURES RELATING TO CONSTRUCTION OR TO REGULATION AND CONTROL OF TRAFFIC MAY BE SUBJECT TO CHANGE AS DEEMED NECESSARY BY THE DEPARTMENT

| | | | | |
|---------------------|--------------|-------------|--|--------------------|
| REVISED 12/20/19 | STATE VA. | ROUTE 64 | STATE PROJECT 0064-965-229 R-201.C-501 | SHEET NO. X-354 |
|---------------------|--------------|-------------|--|--------------------|

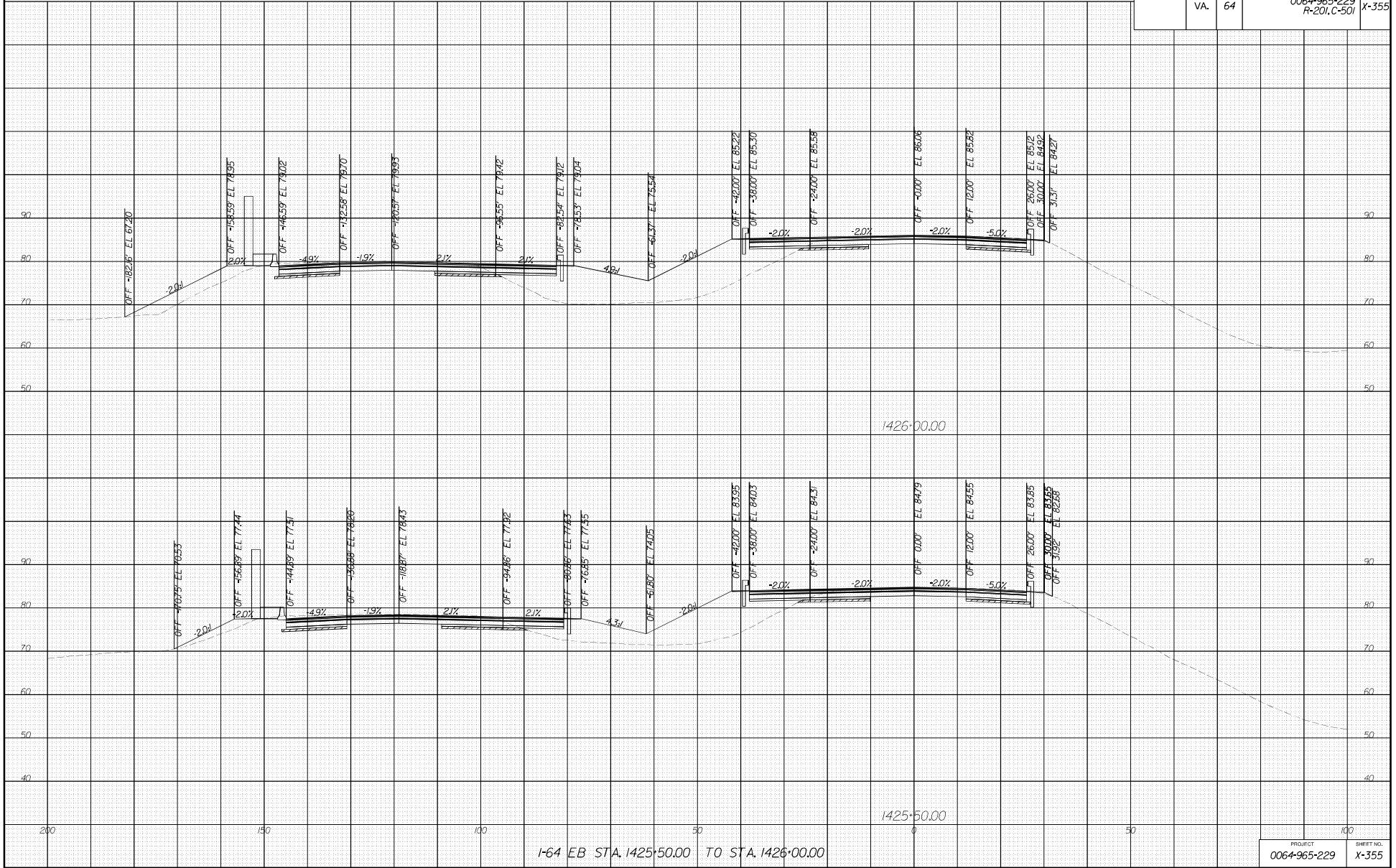


PROJECT MANAGER [REDACTED]
 SURVEYED BY: Dewberry Engineers Inc., 27B
 DESIGNED BY: Dewberry Engineers Inc., [REDACTED]
 SUBSURFACE UTILITY BY: Accumark, Inc., 37B

CROSS SECTIONS
 SCALE 1 IN. = 10 FT

DESIGN FEATURES RELATING TO CONSTRUCTION OR TO REGULATION AND CONTROL OF TRAFFIC MAY BE SUBJECT TO CHANGE AS DEEMED NECESSARY BY THE DEPARTMENT

| | | | | |
|---------------------|--------------|-------------|--|--------------------|
| REVISED 12/20/19 | STATE VA. | ROUTE 64 | STATE PROJECT 0064-965-229 R-201.C-501 | SHEET NO. X-355 |
|---------------------|--------------|-------------|--|--------------------|



1-64 EB STA. 1425+50.00 TO STA. 1426+00.00

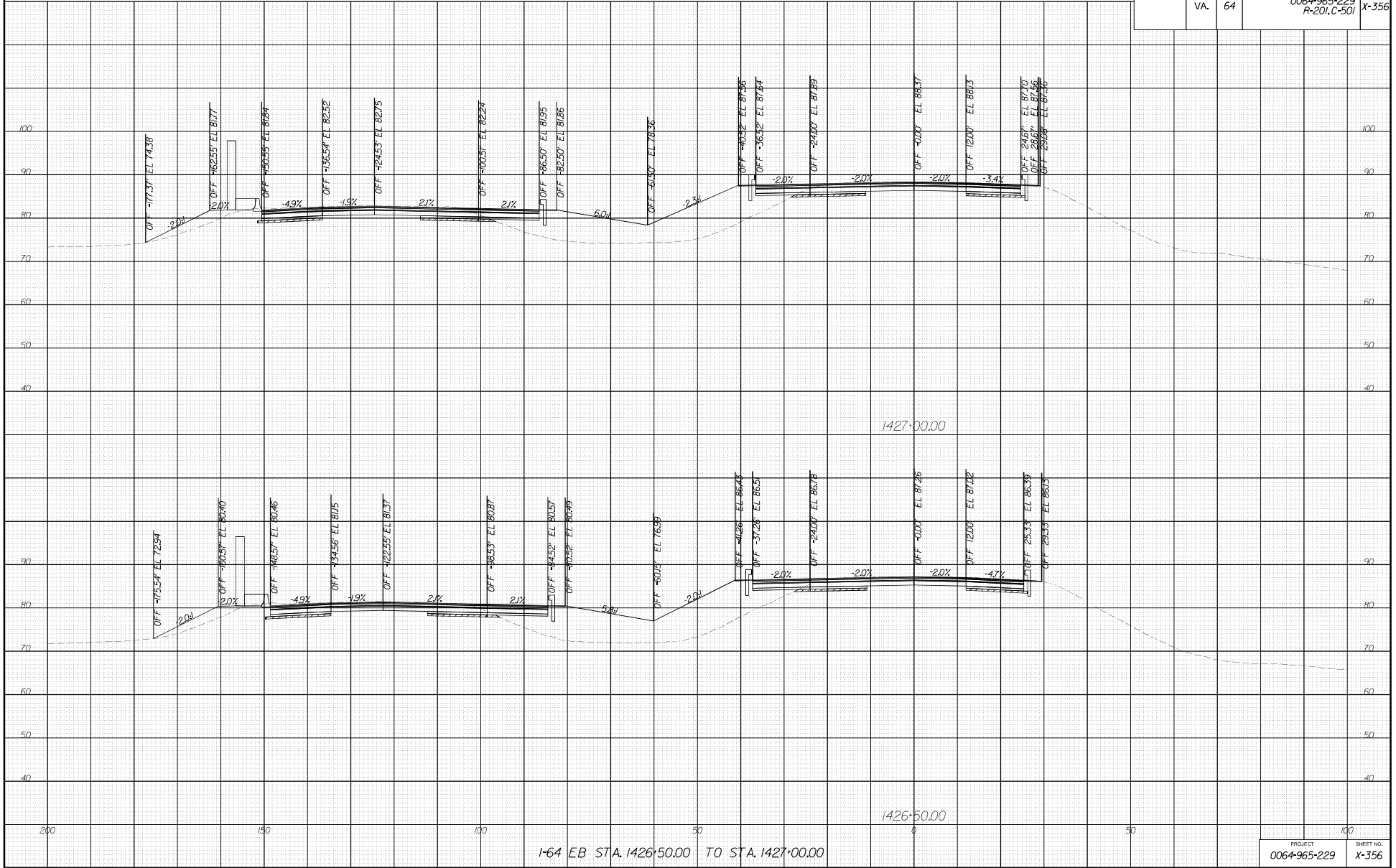
| | |
|-------------------------|--------------------|
| PROJECT 0064-965-229 | SHEET NO. X-355 |
|-------------------------|--------------------|

PROJECT MANAGER [REDACTED]
 SURVEYED BY Dewberry Engineers Inc., 2/18
 DESIGNED BY Dewberry Engineers Inc., [REDACTED]
 SUBSURFACE UTILITY BY Accumark, Inc., 3/18

CROSS SECTIONS
 SCALE 1 IN. = 10 FT

DESIGN FEATURES RELATING TO CONSTRUCTION OR TO REGULATION AND CONTROL OF TRAFFIC MAY BE SUBJECT TO CHANGE AS DEEMED NECESSARY BY THE DEPARTMENT

| | | | | |
|---------------------|-------|-------|-----------------------------|-----------|
| REVISED 12/20/19 | STATE | ROUTE | STATE PROJECT | SHEET NO. |
| | VA. | 64 | 0064-965-229 R-201.C-501 | X-356 |



I-64 EB STA. 1426+50.00 TO STA. 1427+00.00

| | |
|--------------|-----------|
| PROJECT | SHEET NO. |
| 0064-965-229 | X-356 |

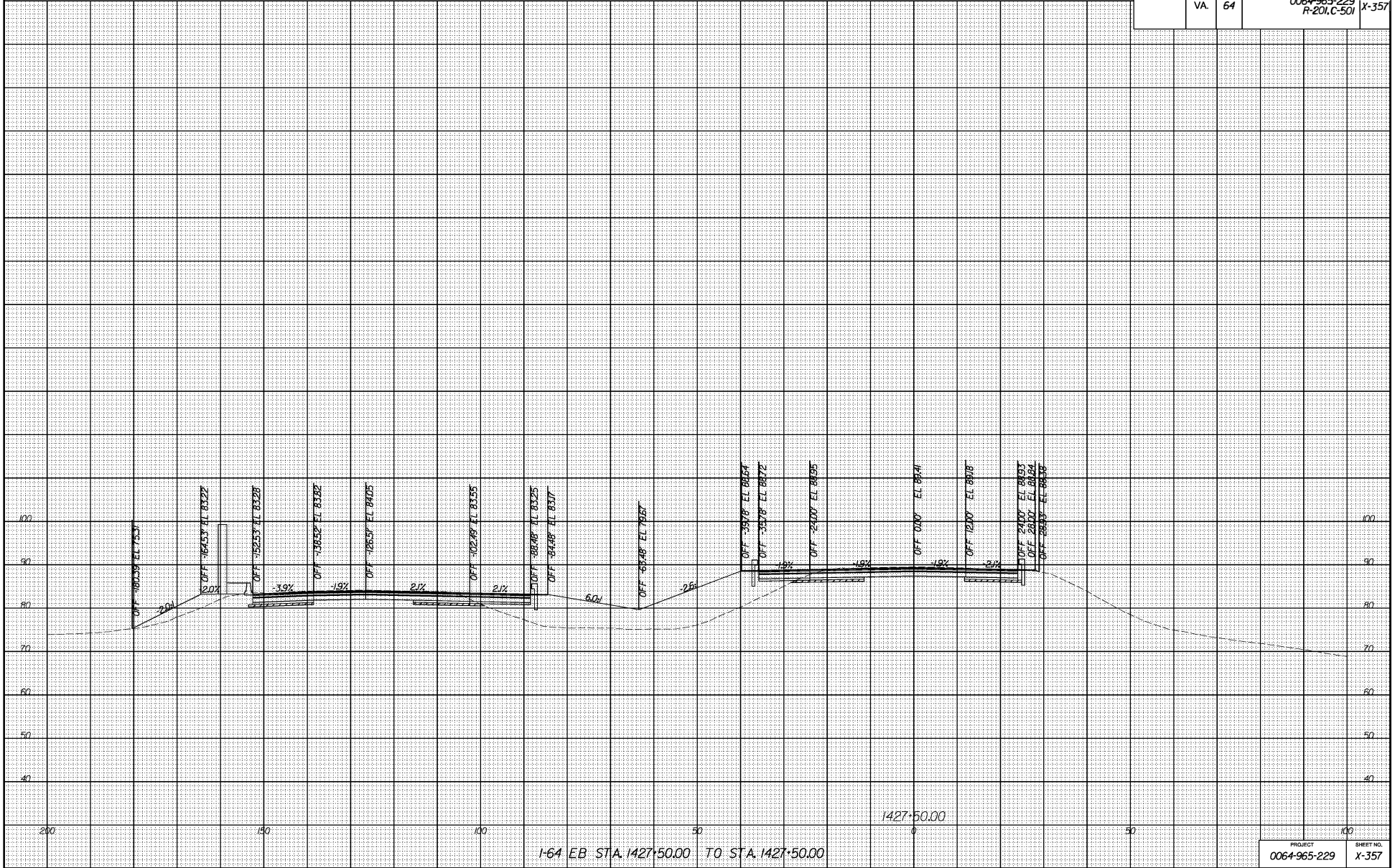
PROJECT MANAGER [REDACTED]
 SURVEYED BY: Dewberry Engineers Inc., 2/18
 DESIGNED BY: Dewberry Engineers Inc., [REDACTED]
 SUBSURFACE UTILITY BY: Accumark, Inc., 3/18

CROSS SECTIONS

SCALE 1 IN. = 10 FT

DESIGN FEATURES RELATING TO CONSTRUCTION OR TO REGULATION AND CONTROL OF TRAFFIC MAY BE SUBJECT TO CHANGE AS BEHEMED NECESSARY BY THE DEPARTMENT

| | | | | |
|--------------------|--------------|-------------|--|--------------------|
| REVISED 2/20/19 | STATE VA. | ROUTE 64 | STATE PROJECT 0064-965-229 R-201.C-501 | SHEET NO. X-357 |
|--------------------|--------------|-------------|--|--------------------|



1-64 EB STA. 1427+50.00 TO STA. 1427+50.00

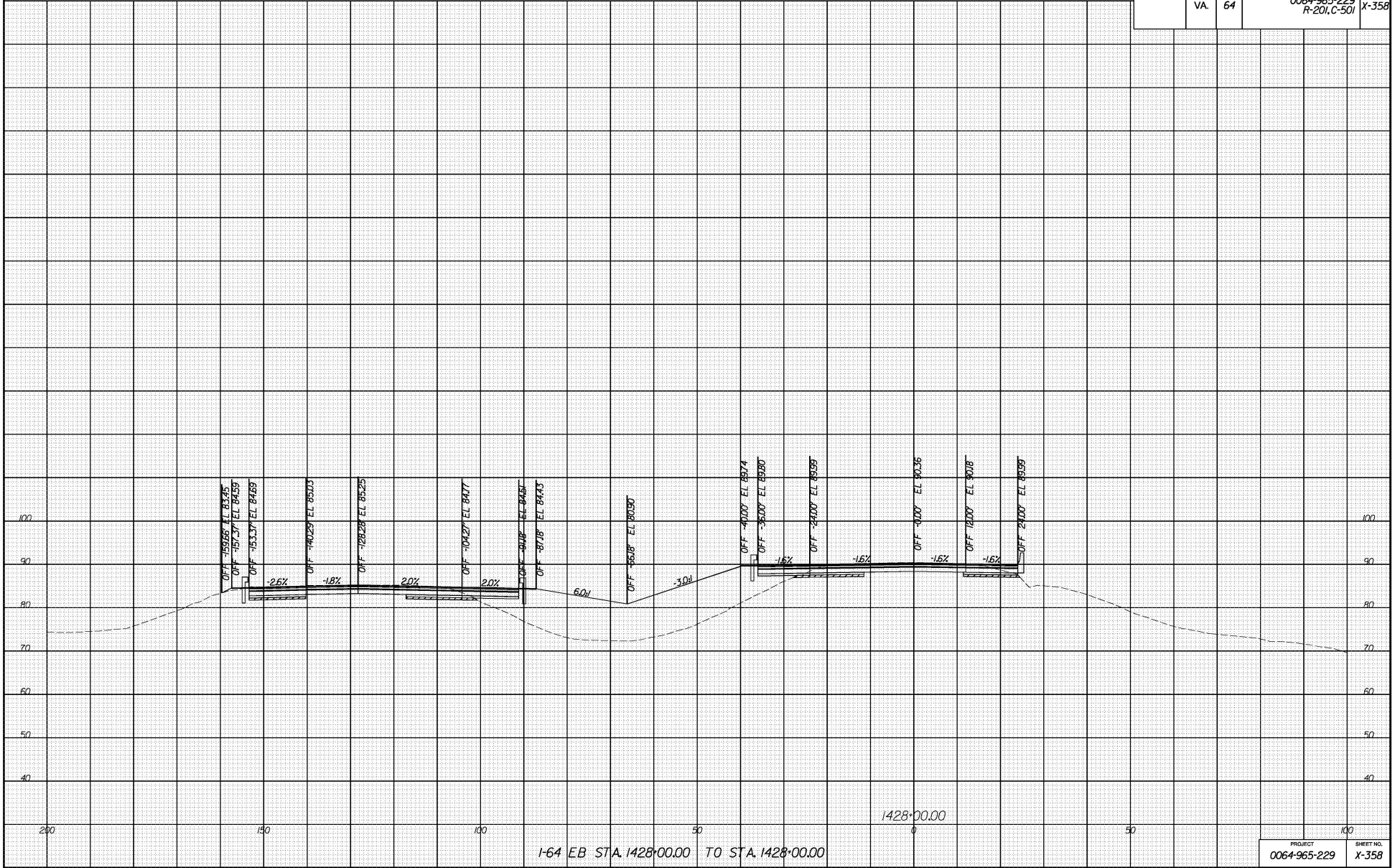
| | |
|-------------------------|--------------------|
| PROJECT 0064-965-229 | SHEET NO. X-357 |
|-------------------------|--------------------|

PROJECT MANAGER [REDACTED]
 SURVEYED BY Dewberry Engineers Inc., 2/18
 DESIGNED BY Dewberry Engineers Inc., [REDACTED]
 SUBSURFACE UTILITY BY Accumark, Inc., 3/18

CROSS SECTIONS
 SCALE 1 IN. = 10 FT

DESIGN FEATURES RELATING TO CONSTRUCTION
 OR TO REGULATION AND CONTROL OF TRAFFIC
 MAY BE SUBJECT TO CHANGE AS DEEMED
 NECESSARY BY THE DEPARTMENT

| REVISED | STATE | ROUTE | STATE PROJECT | SHEET NO. |
|---------|-------|-------|-----------------------------|-----------|
| | VA. | 64 | 0064-965-229 R-201.C-501 | X-358 |



I-64 EB STA. 1428+00.00 TO STA. 1428+00.00

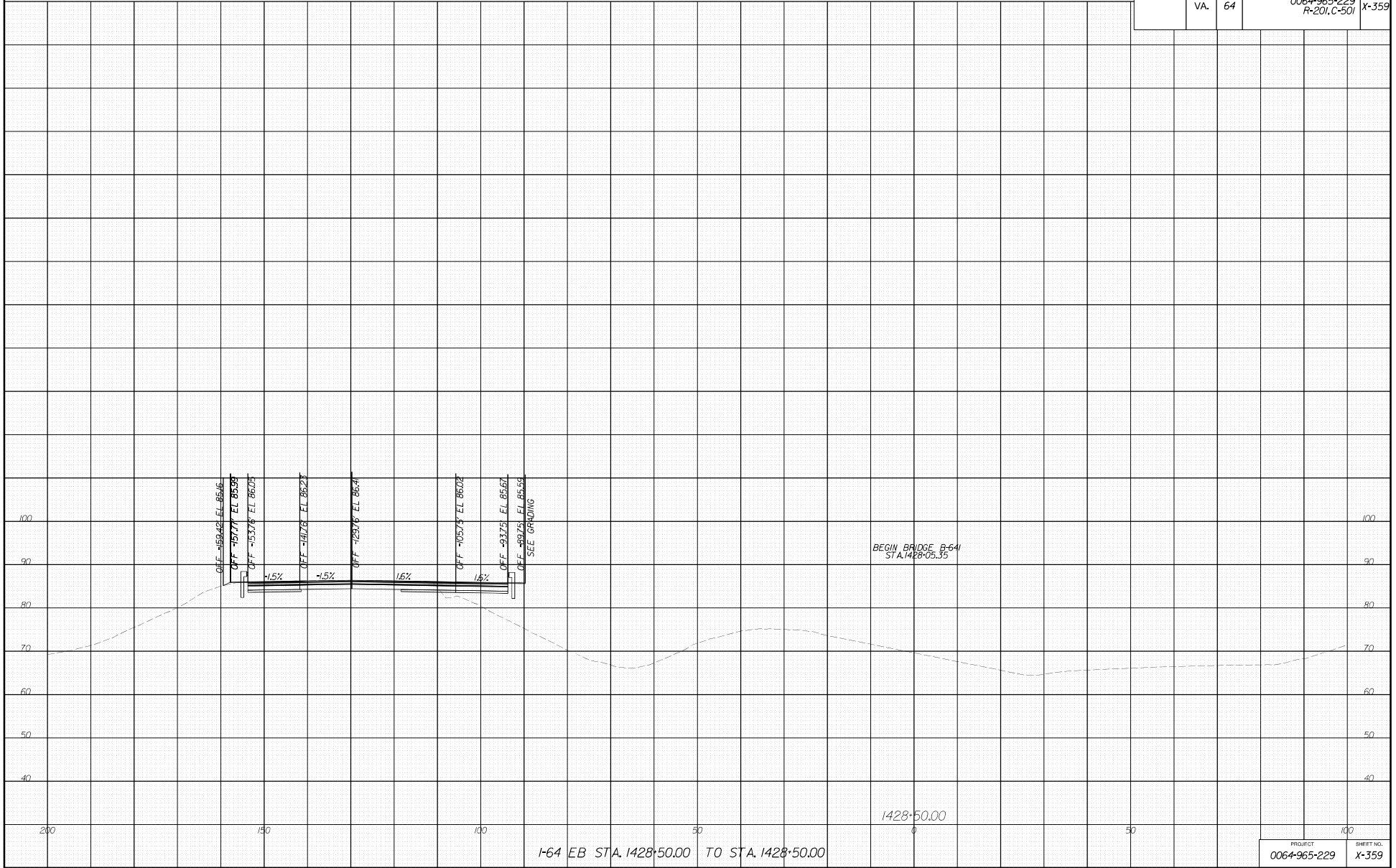
| PROJECT | SHEET NO. |
|--------------|-----------|
| 0064-965-229 | X-358 |

PROJECT MANAGER [REDACTED]
 SURVEYED BY Dewberry Engineers Inc., 2718 [REDACTED]
 DESIGNED BY Dewberry Engineers Inc., [REDACTED]
 SUBSURFACE UTILITY BY Accumark, Inc., 3718 [REDACTED]

CROSS SECTIONS
 SCALE 1 IN. = 10 FT

DESIGN FEATURES RELATING TO CONSTRUCTION OR TO REGULATION AND CONTROL OF TRAFFIC MAY BE SUBJECT TO CHANGE AS DEEMED NECESSARY BY THE DEPARTMENT

| REVISION | STATE | STATE PROJECT | | SHEET NO. |
|----------|-------|---------------|-----------------------------|-----------|
| | | ROUTE | PROJECT | |
| | VA. | 64 | 0064-965-229 R-201.C-501 | X-359 |



| PROJECT | SHEET NO. |
|--------------|-----------|
| 0064-965-229 | X-359 |

PROJECT MANAGER [REDACTED]
 SURVEYED BY: Dewberry Engineers Inc., 21B [REDACTED]
 DESIGNED BY: Dewberry Engineers Inc., 1 [REDACTED]
 SUBSURFACE UTILITY BY: Accumark, Inc., 37B [REDACTED]

CROSS SECTIONS
 SCALE 1 IN. = 10 FT

DESIGN FEATURES RELATING TO CONSTRUCTION
 OR TO REGULATION AND CONTROL OF TRAFFIC
 MAY BE SUBJECT TO CHANGE AS DEEMED
 NECESSARY BY THE DEPARTMENT

| REVISION | STATE | STATE PROJECT | | SHEET NO. |
|----------|-------|---------------|-----------------------------|-----------|
| | | ROUTE | PROJECT | |
| | VA. | 64 | 0064-965-229 R-201.C-501 | X-360 |

