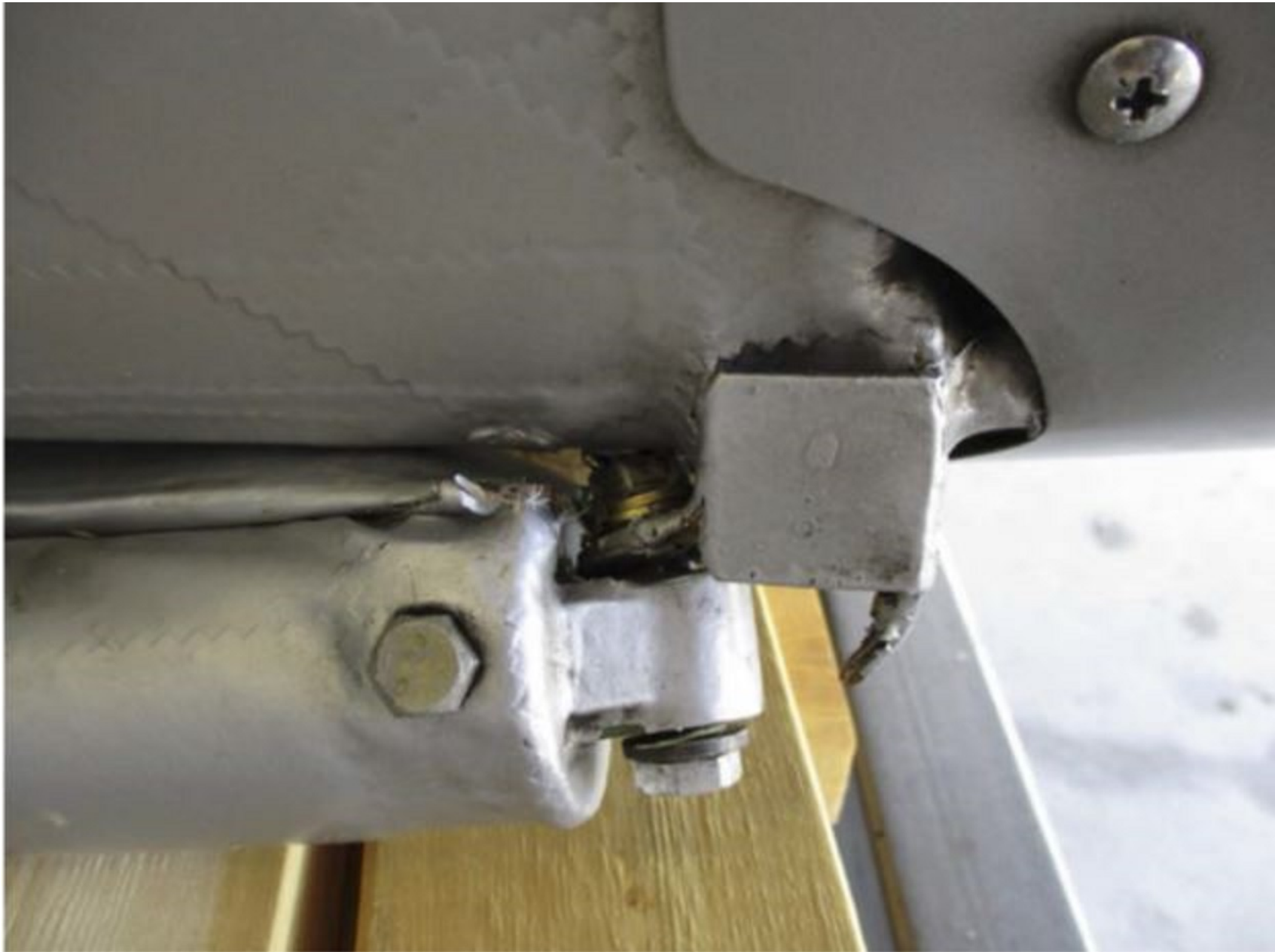




**Photo 1 – N9325H, an Aeronca L-16A (7BCM), in a pasture after a forced landing following a total loss of engine power (FAA photo)**



**Photo 2 - Buckled right main landing gear (FAA photo)**



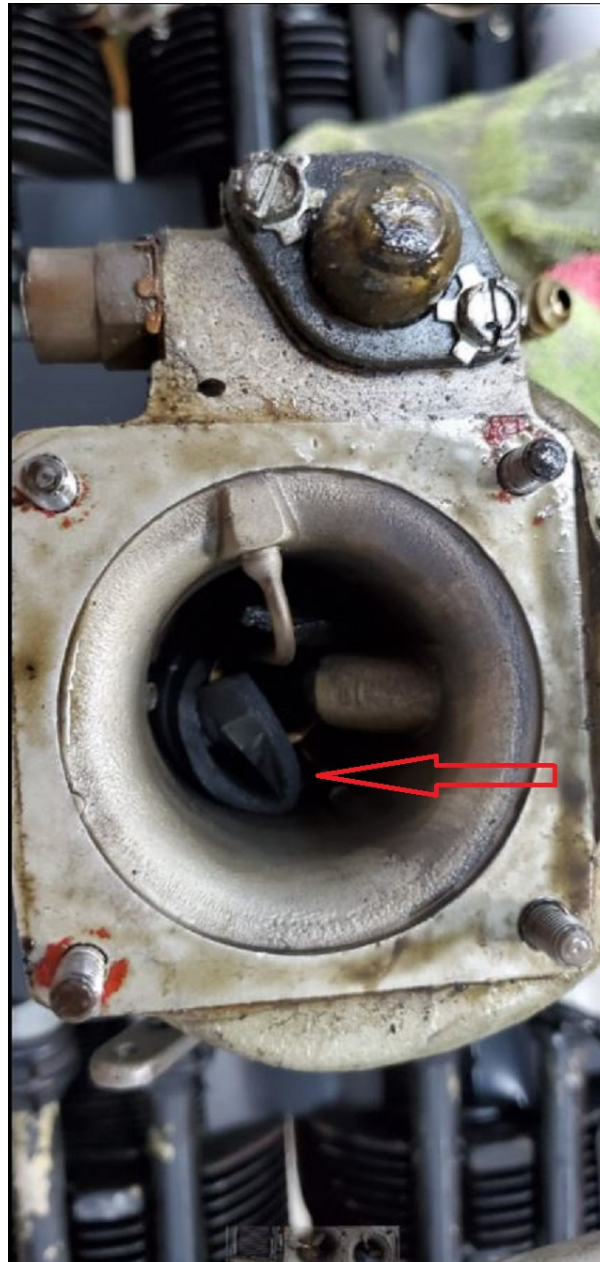
**Photo 3 – Close-up view of right main landing gear failure point (FAA photo)**



**Photo 4 - The condition of the air filter gasket as found by the mechanic. Note the gasket seal is missing from the top of the air filter (arrow) (Chuck Potts photo)**



**Photo 5 - The carburetor intake. Note the strip of air filter gasket lodged in the throat (arrow) (Chuck Potts photo)**



**Photo 6 - Another view of the carburetor intake with a strip of air filter gasket lodged in the throat (arrow) (Chuck Potts photo)**