

10135

9:53p 'noting 7/21  
7:15p Engine Start

1 on 1 and

WX 080/06KT 10SM CLR 27/23

A2993

Crosswind Gust Push Aircraft off Centerline  
~~time. Upon correction not working. Power Re~~  
Aircraft touched down on Centerline just beyond the  
numbers. and began crabbing to the Right. Ailerons  
were turned into the wind. when crab approach the  
side of the Runway, Power <sup>Full</sup> was applied in an attempt  
to go around. Plane lifted off, but was push off  
Aprone, and ~~left wing~~ Right gear clipped FBO sign which  
pushed the left wing into the Runway. left Gear Collapsed  
causing nose wheel to bend & collapse driving plane to  
opposite side of the Runway where it came to Rest.  
Engine Powerced off, Fuel turned off, called to traffic in  
pattern, and then called FBO for assistance

7/22/2020





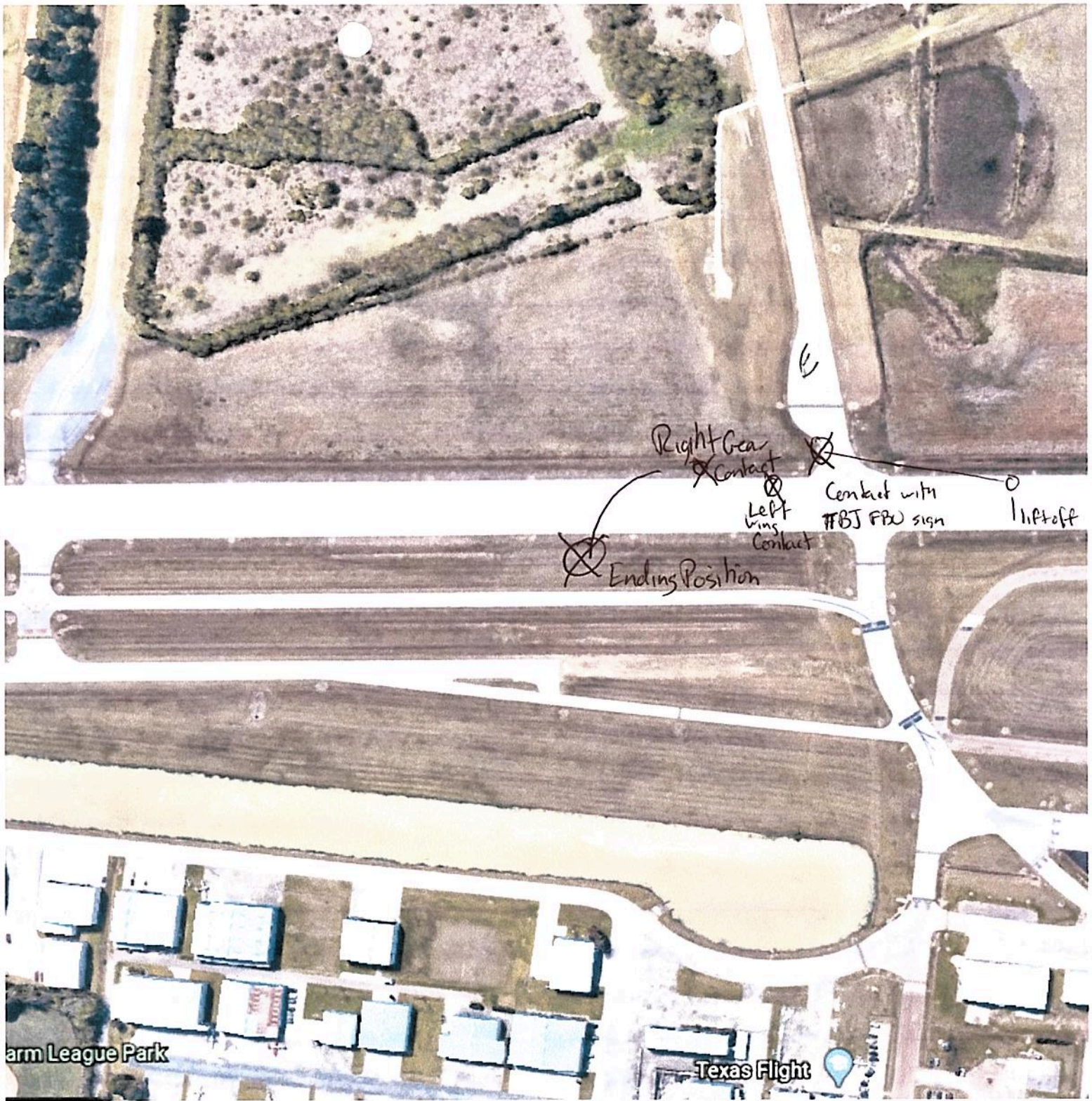
Full Power reappplied

Flaps Retracted

Touch down point

David Wayne  
Hooks  
Memorial  
Airport





Right Gear  
Contact

Left  
Wing  
Contact

Ending Position

Contact with  
TFBJ FBU sign

InPtoft

arm League Park

Texas Flight