

Compressor Stations

Danville Station

PREVIOUS

NEXT

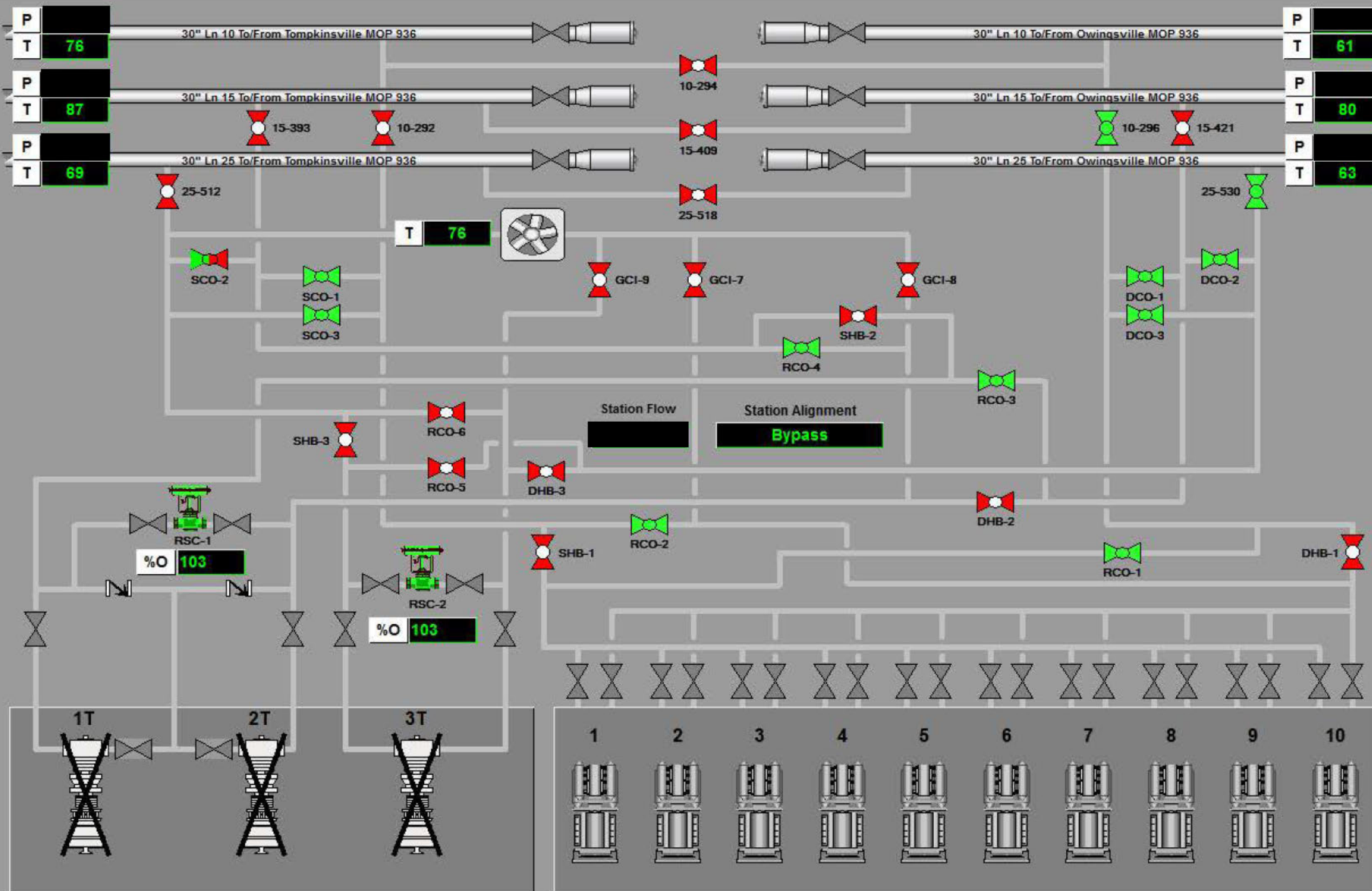
Tompkinsville Station

Owingsville Station

SCHMATIC | ALARMS | EVENTS | TRENDS | POINTS | COMMUNICATIONS | VALVES | MEASUREMENT | CHROMATOGRAPH | NOTES | DOCS

Call Attendant

Danville Station



Ambient

77

Ground

79

Unit Detail



Gas Control Time: 8:09 am

LINKS

JUMP

UP:

Operational Sub-Area TOMP-WHE