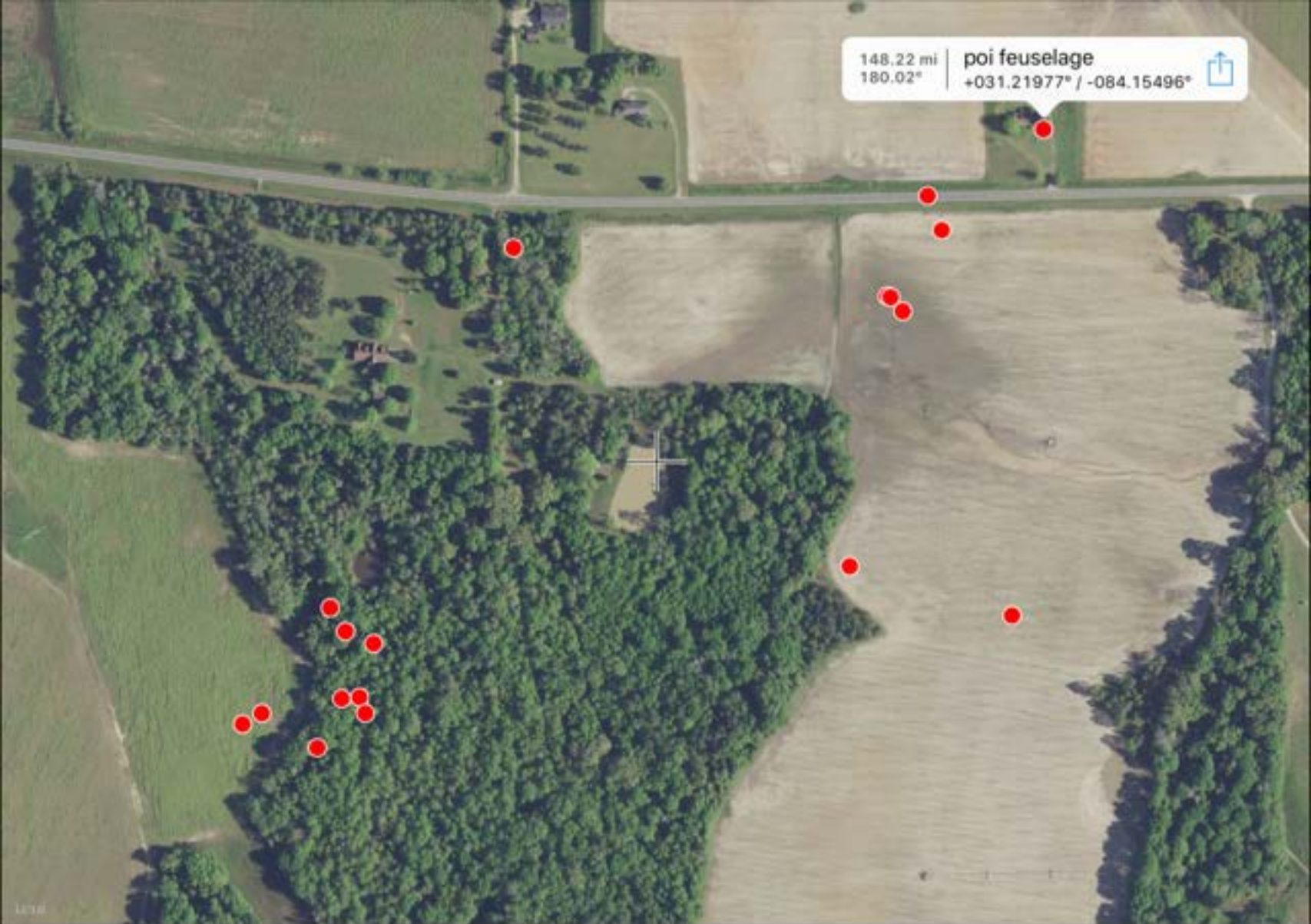


148.22 mi
180.02°

poi feuselage

+031.21977° / -084.15496°



Done

148.44 mi | left wing section
180.15° | +031.21656° / -084.16055°



148.45 mi | horizontal stab?
180.15° | +031.21641° / -084.16042°





148.46 mi | tail cone and verical/rudder
180.14° | +031.21632° / -084.16020°






148.48 mi | leading edge piece
180.14° | +031.21597° / -084.16032°



148.49 mi | feuselage bulkhead
180.15° | +031.21596° / -084.16045°





148.49 mi | elevator/horizontal
180.14° | +031.21586° / -084.16027° 



148.51 mi | elevator
180.15° | +031.21563° / -084.16064°