

## 1.0 Wreckage Diagram

The National Transportation Safety Board investigator-in-charge and another investigator from the Safety Board performed on-scene wreckage documentation and initial examination on April, 16, 2015. The accident site was located on a private ranch in a mountainous area, about 40 miles south of the departure point, Bakersfield Airport, Bakersfield, California.

Witnesses report seeing a low flying aircraft flying over the interstate, about 4 miles from the accident site. The airplane impacted tree covered terrain on a 090 heading at about 4,000 mean sea level (msl).



Figure 1: Google Earth view of the witness locations and accident site

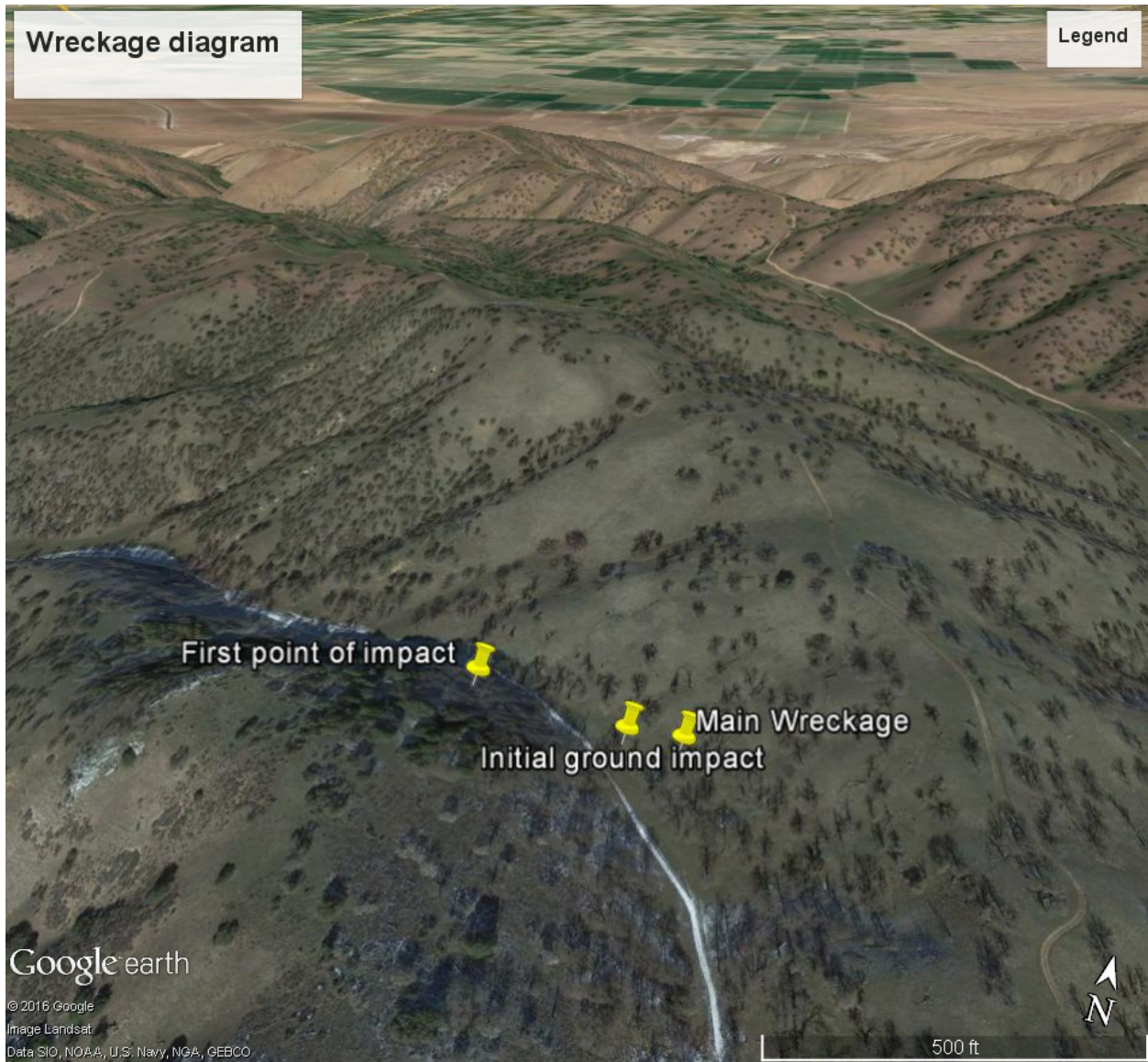


Figure 2: Google Earth view of the initial impact point and main wreckage