

# CUSTOMER WORK ORDER REPORT

## GARDNER AVIATION SPECIALIST, INC.

WO # 19054-AI Task 3 AV pg 1

FAA Certified Repair Station # [REDACTED]

Cust Code: STJE Phone: [REDACTED]  
 JERRY STEELE DEVELOPMENT CO.

MCDONOUGH, GA 30253 USA



Item	
Part #	
Model	
Serial #	
Mfgr.	
Discrep.	INSTALL SHADIN FUEL FLOW

A/C Tail #	N4482S		
A/C Make	BEECH		
A/C Model	95-B55	Ser#	TC-1882
Job Status	OPENED		
Job type	STANDARD		
Open Date	Oct-02-2003 Thursday		
Promised			
Started	Nov-05-2003 Wednesday		
Finished			
Printed	Nov-22-2003 Saturday 11:01		

**Discrepancy & Corrective Action**

REMOVED T1028 FUEL FLOW INDICATOR.

INSTALLED SHADIN DIGIFLO-L FUEL FLOW INDICATOR PN:910532P SN:4888 AND FUEL FLOW TRANSDUCERS PN:68050-A1 SN:130436 AND SN:130437. INTERFACED THE INDICATOR TO THE GARMIN GNS430. INSTALLED THIS SYSTEM IN ACCORDANCE WITH SHADIN REPORT# 4036 DATED SEPT 10, 1986 AND STC# SA579GL. INSTALLED FUEL FLOW TRANSDUCERS IN ACCORDANCE WITH SHADIN REPORT# 4029 DATED NOV 5, 1990 AND STC# SE552GL. NOTE: THAT THE K FACTOR IS SET AT 29.8. COMPLETED FAA FORM 337.

Labor Date	Empl	Description	Hrs
13Nov2003 Thu	JHICKS		1.00 RG
13Nov2003 Thu	JHICKS		1.00 RG
13Nov2003 Thu	JHICKS		0.60 RG
11Nov2003 Tue	JHICKS		2.00 RG
14Nov2003 Fri	JHICKS		6.50 RG
17Nov2003 Mon	JHICKS		2.60 RG
17Nov2003 Mon	FRANK		8.00 RG
17Nov2003 Mon	ALRU		2.30 RG
17Nov2003 Mon	JHICKS		2.80 RG
18Nov2003 Tue	FRANK		4.10 RG
18Nov2003 Tue	FRANK		2.90 RG
19Nov2003 Wed	ALRU		1.00 RG

Equip Model	Description	Qty
910532P \ 4888	SHADIN DIGIFLO-L	1
KIT A-1 \ 130436	FUEL TRANSDUCER	1
KIT A-1 \ 130437	FUEL TRANSDUCER	1

Part Number Used	SKU Description	Qty
IK-9337	18767 INST KIT	1.00
491-4	3821 FITTING	6.00
816-4	4908 FITTINGS	6.00
AN912-1	18802	4.00
7277-2-2	4647 CIRCUIT BREAKER	1.00
7277-2-7-1/2	4652 CIRCUIT BREAKER	1.00
225554-6	2566 90 DEGREE TNC, RG142-400	1.00
UG88	17024 CONNECTOR BNC DUAL CRIMP MALE	2.00
UG89	18728 CONNECTOR BNC DUAL CRIMP FEMAL	1.00

Other type	Description	Qty
SHIP UPS NDA	FROM EDMO	1.00
SHIP UPS NDA	FROM SHADDIN	1.00
SHIP UPS NDA	FROM EDMO	1.00

**MAINTENANCE RELEASE / RETURN TO SERVICE CRS# G3SR222J**

The aircraft, airframe, engine, or appliance identified above was repaired and inspected in accordance with current regulations of the FAA and is approved for return to service.

Inspector / Authorized Signature

Certificate #

Date

PART NUMBER: 910532P

SERIAL NUMBER: 4888

INVOICE NUMBER: 758902

DATE: 11-06-03

L: 29.8 Left K-Factor (where XXXXXX is valid from 0 to 20,000. These are in 10's. A setting of 1234 would be a K-Factor of 12,340)

R(r): 29.8 Right K-Factor

U

Units:  
0 = Gallons ✓  
1 = Liters  
2 = Lbs 5.8  
3 = Lbs 6.7  
4 = Kilograms  
5 = Lbs 6.5  
6 = Lbs 6.35

E

Engine Type:  
0 = Single Engine  
1 = Twin Engine ✓

O

Output Type:  
0 = Off  
1 = King  
2 = AirData  
3 = Arnav  
4 = Trimble  
5 = Garmin ✓

I

Loran Input:  
0 = Off  
1 = On ✓

F

Filter Type:  
0 = Injector ✓  
1 = Carburetor

★★★★ ATTENTION ★★★★★

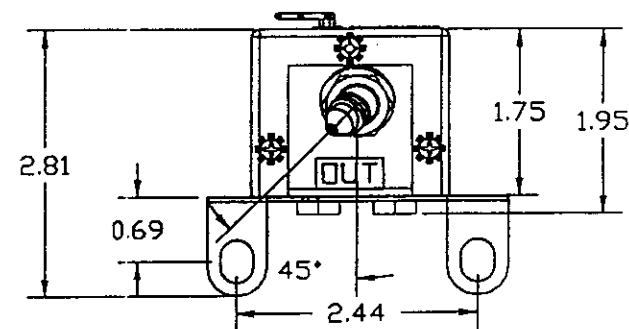
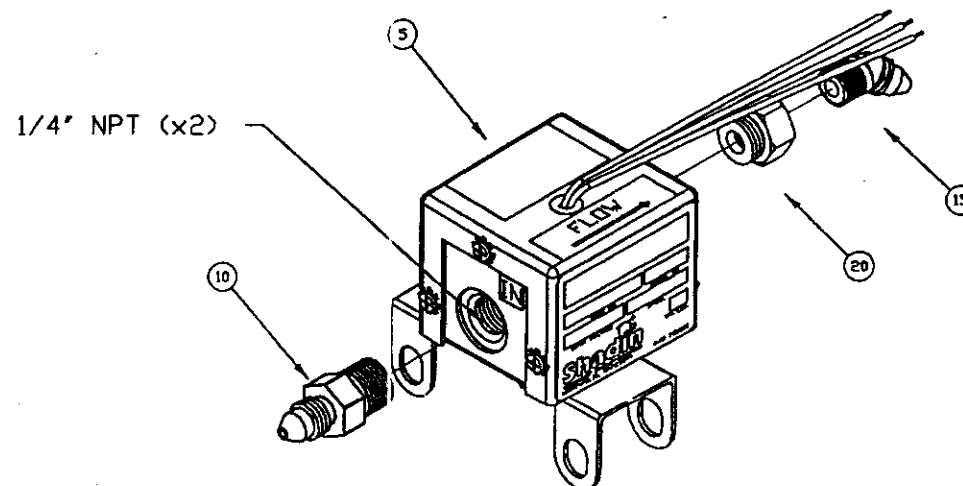
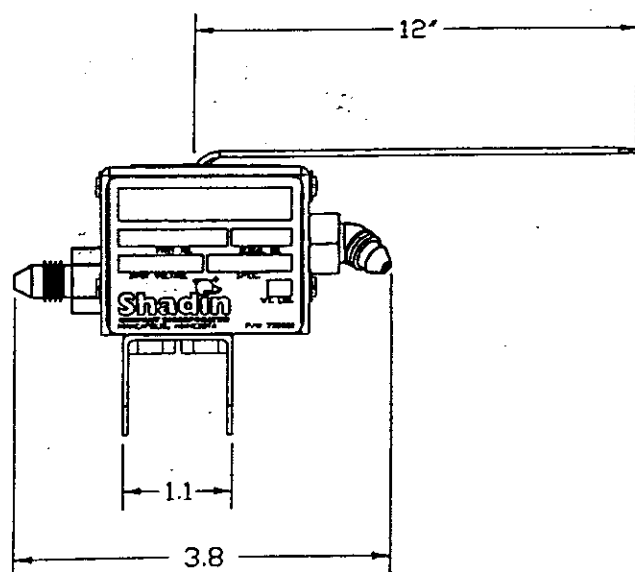
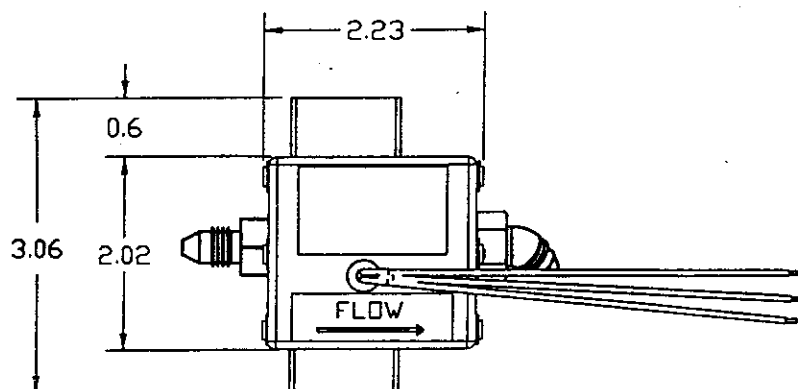
1. It is the responsibility of the installing agency to verify the settings of Shadin Fuel Flow Systems and or Air Data Computers.
2. The installation of other then Shadin approved parts is possibly an unapproved installation and may not be covered under warranty.

# NOTES:

1. ALL LINEAR DIMENSIONS ARE REFERENCE ONLY.
2. TO INSTALL FITTINGS, APPLY THREAD SEALANT IN ACCORDANCE WITH AC 43.13. TORQUE FITTINGS TO 15 FT-LBS MAX. DO NOT USE TEFLON TAPE.
3. INSTALL TRANSDUCER IN HORIZONTAL POSITION WITH WIRES ON TOP.
4. REFER TO KIT A-1 PARTS LIST.

## WIRE TABLE

COLOR	SIGNAL NAME
BLACK	GROUND
WHITE	SIGNAL
RED	POWER 12VDC



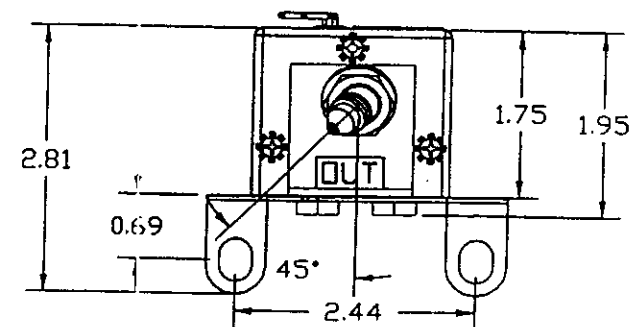
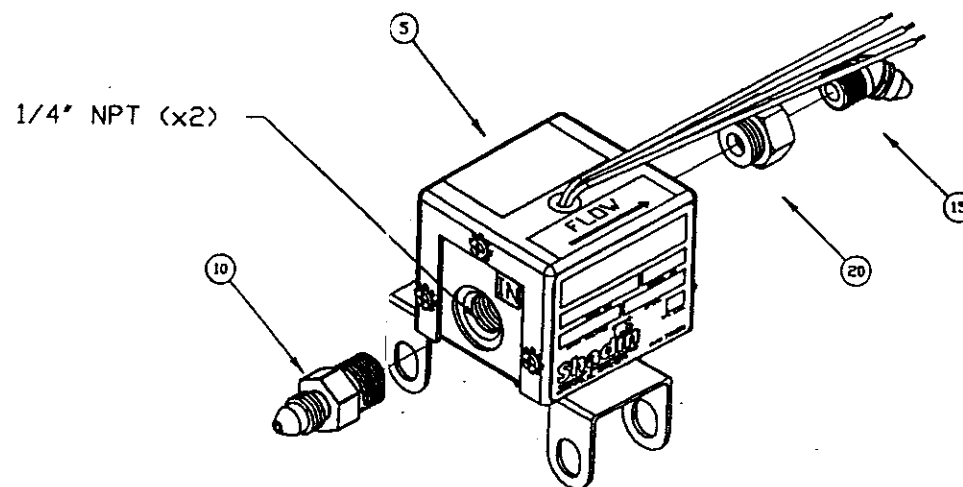
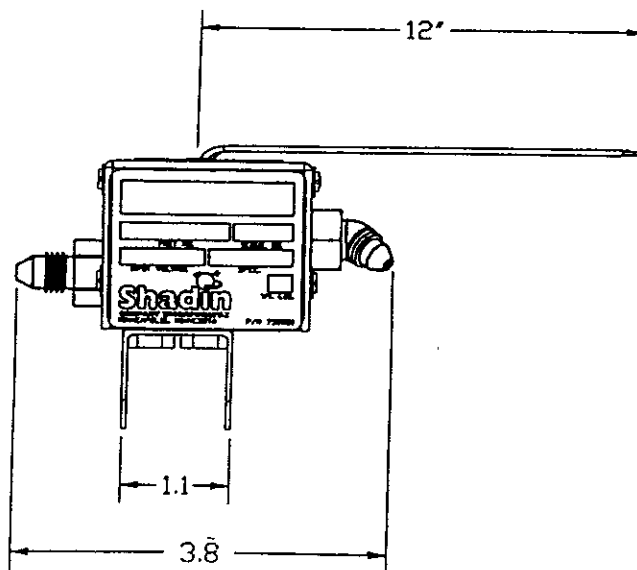
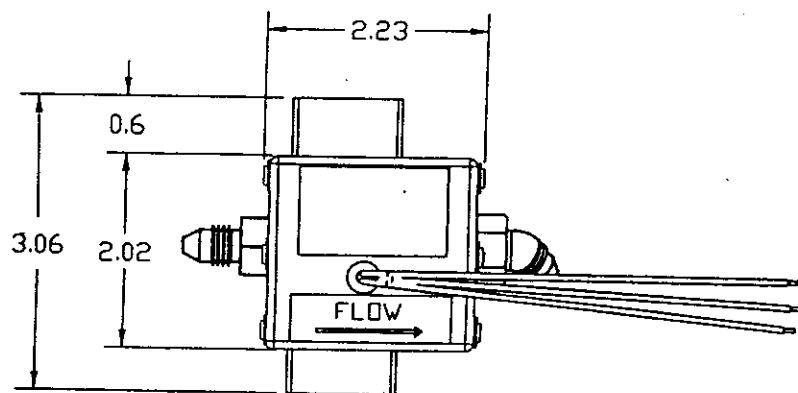
UNLESS OTHERWISE NOTED DIMENSIONS ARE IN INCHES: TOLERANCES: $\pm 20'$		DRAWING DATE 9/17/02		SHADIN CO., INC. MINNEAPOLIS, MN 55426	
FINISH: N/A		DRAFTER PAB		INSTALL DWG, KIT A1, 680501A	
MATERIAL: N/A		APPROVED PJD		DRAWING NO. 4005-E34	
SCALE: NONE		FILE NAME KITAI-JDWG		SIZE A	
		DIRECTOR INSTALL KITS		P/N KIT A1	
		SHEET 1 OF 1		REV -	

0208/014	-	9-19-02	PAB	PJD	BASELINE RELEASE
ECO #	REV.	DATE	BY	APP'D	DESCRIPTION

# NOTES:

1. ALL LINEAR DIMENSIONS ARE REFERENCE ONLY.
2. TO INSTALL FITTINGS, APPLY THREAD SEALANT IN ACCORDANCE WITH AC 43.13. TORQUE FITTINGS TO 15 FT-LBS MAX. DO NOT USE TEFLON TAPE.
3. INSTALL TRANSDUCER IN HORIZONTAL POSITION WITH WIRES ON TOP.
4. REFER TO KIT A-1 PARTS LIST.

WIRE TABLE	
COLOR	SIGNAL NAME
BLACK	GROUND
WHITE	SIGNAL
RED	POWER 12VDC



UNLESS OTHERWISE NOTED  
DIMENSIONS ARE IN INCHES  
TOLERANCES:  
 $\pm 20'$

FINISH: N/A  
MATERIAL: N/A  
SCALE: NONE

DRAWING DATE: 9/17/02  
DRAWN BY: PAR  
APPROVED BY: PJD  
FILE NAME: KITAI-J.DWG  
DIRECTORY: INSTALL\_KITS  
SHEET 1 OF 1

SHADIN CO., INC. MINNEAPOLIS, MN 55426

INSTALL DWG, KIT A1,  
680501A

DRAWING NO. 4005-E34  
SIZE A  
P/N KIT A1

REV -

REV.	DATE	BY	APP'D	DESCRIPTION
0208/014	-	9-19-02	PAB PJD	BASELINE RELEASE