

Docket No. SA-520

Exhibit No. 4-D

NATIONAL TRANSPORTATION SAFETY BOARD

Washington, D .C .

**Statement of Witness C,
M. Blake and Location Map**

(3 Pages)

WITNESS C

**EYEWITNESS
STATEMENT OF**

Michele Blake

**██████████
Ventura, CA 93003**

On February 3, 2000, Ms. Blake was interviewed by the National Transportation Safety Board Witness Group. She made the following statements:

On January 31, 2000, I was located in the backyard of a residence at ██████████
██████████ Ventura, California. I was sitting and facing toward the ocean. The time was between 1615 and 1630.

I observed an airplane in the sky, about 30 degrees above the horizon. In front of me was what appeared to be a black airplane falling out of the sky. The airplane's nose was pointed down and it was descending.

I first thought that I was seeing a toy airplane, and I said out loud "whoa, look at that plane." I subsequently learned that it was a real airplane which had crashed.

The airplane looked as though it was descending nearly vertically downward. As it lost altitude its wings rolled back and forth several times. The tail also seemed to yaw a little. The manner in which it was falling was disturbing.

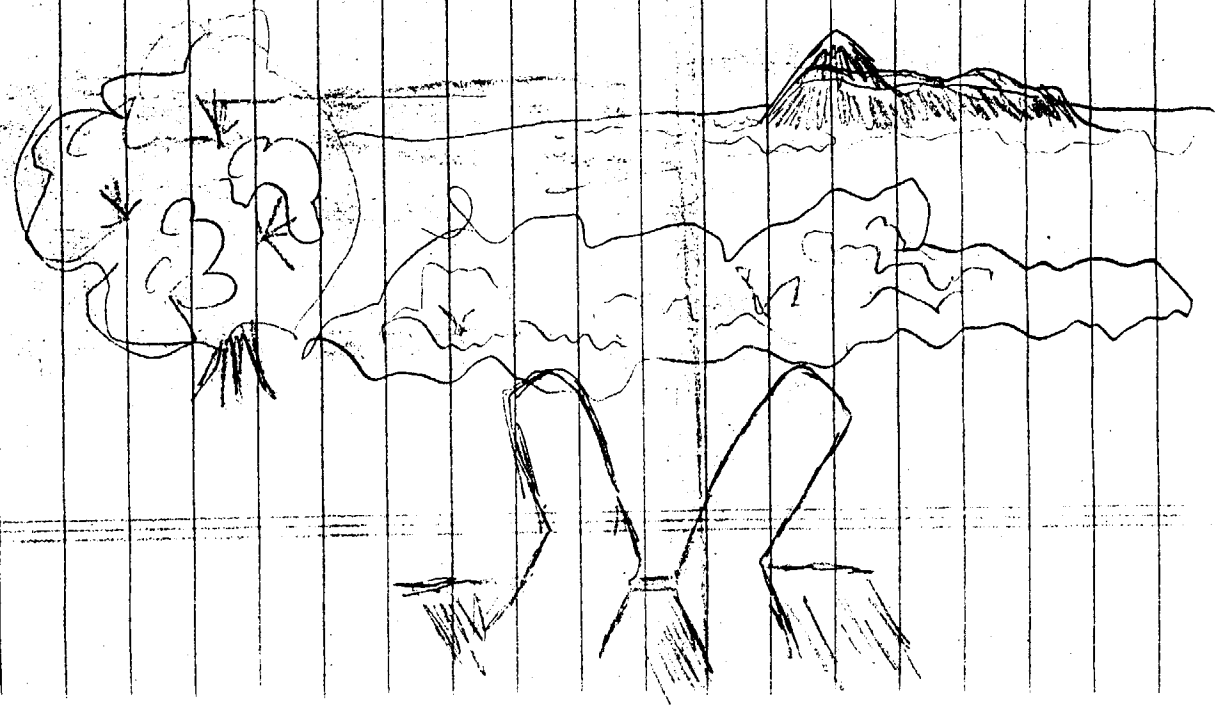
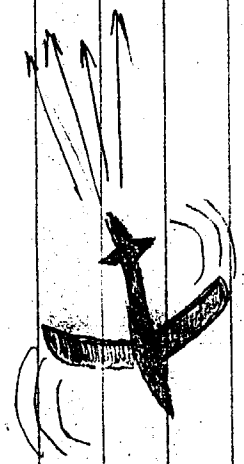
I did not hear any engine noise. I did not see any other airplanes in the area. I did not see any smoke, fire, or flashes. The sky was clear.

Later during the evening I made a drawing of my observations. (The drawing has been attached to this statement.)

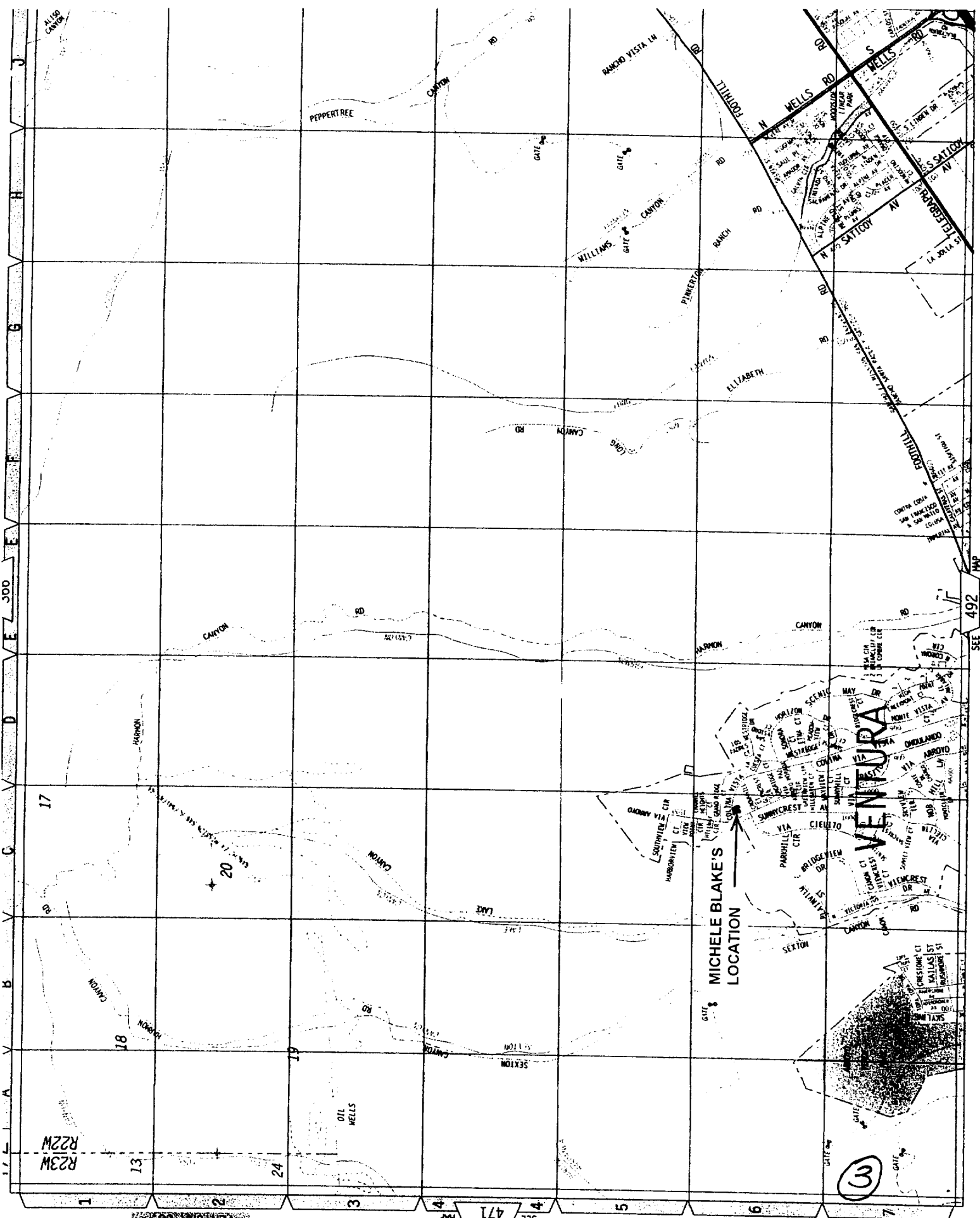
The total time during which I observed the airplane's flight was between 3 and 4 seconds. Then, it disappeared behind bushes which were located in front of me. I did not see the airplane impact the water.

██
██
Michele Blake

FLIGHT PATH DRAWING
BY MICHELE BLAKE, R.N.



2



MICHELE BLAKE'S
LOCATION

3

SEE 471 MAP

SEE 492 MAP

VENTURA CO

