

## Weather Summary - KHOU 040953Z 20003KT 3/4SM BR VV002 19/18 A2990

METAR KHOU 040053Z 12006KT 10SM BKN015 BKN037 20/16 A2998 RMK AO2 SLP157 T02000156  
METAR KHOU 040153Z 14006KT 10SM BKN011 OVC037 19/16 A2999 RMK AO2 SLP158 T01940161  
SPECI KHOU 040245Z 14004KT 10SM SCT013 OVC035 19/16 A2999 RMK AO2  
METAR KHOU 040253Z 14004KT 10SM FEW013 OVC037 19/16 A2999 RMK AO2 SLP161 T01940161 53005  
SPECI KHOU 040328Z 00000KT 10SM BKN012 OVC039 19/16 A3000 RMK AO2  
METAR KHOU 040353Z 11003KT 10SM BKN014 BKN022 OVC041 19/16 A3000 RMK AO2 SLP163 T01940161  
SPECI KHOU 040422Z 12004KT 10SM FEW012 BKN045 19/16 A2999 RMK AO2  
METAR KHOU 040453Z 11004KT 10SM FEW045 18/16 A2998 RMK AO2 SLP156 T01830156  
SPECI KHOU 040517Z 10003KT 10SM BKN010 BKN017 18/16 A2998 RMK AO2  
SPECI KHOU 040531Z 11003KT 10SM SCT012 SCT045 18/16 A2997 RMK AO2  
METAR KHOU 040553Z 12005KT 10SM CLR 18/16 A2996 RMK AO2 SLP151 T01780156 10206 20178 402330106 58009  
SPECI KHOU 040637Z 11005KT 8SM BKN018 18/16 A2995 RMK AO2  
METAR KHOU 040653Z 12005KT 8SM OVC018 18/16 A2995 RMK AO2 SLP146 T01830161  
SPECI KHOU 040717Z 12005KT 8SM FEW006 OVC018 19/17 A2995 RMK AO2  
SPECI KHOU 040733Z 13005KT 8SM BKN006 OVC018 19/17 A2994 RMK AO2  
METAR KHOU 040753Z 13005KT 7SM OVC006 19/17 A2993 RMK AO2 SLP141 T01890172  
SPECI KHOU 040808Z 13006KT 6SM BR OVC004 19/17 A2993 RMK AO2  
METAR KHOU 040853Z 15003KT 4SM BR OVC004 19/18 A2991 RMK AO2 SLP133 T01890178 58018  
SPECI KHOU 040938Z 19003KT 2SM BR OVC002 19/18 A2990 RMK AO2  
SPECI KHOU 040945Z 20003KT 1 1/4SM BR OVC002 19/18 A2990 RMK AO2  
METAR KHOU 040953Z 20003KT 3/4SM BR VV002 19/18 A2990 RMK AO2 SLP130 T01890178  
SPECI KHOU 041040Z 16003KT 1 1/2SM BR OVC002 19/18 A2990 RMK AO2  
SPECI KHOU 041047Z 16003KT 3SM BR OVC002 19/18 A2990 RMK AO2  
METAR KHOU 041048Z 17004KT 3SM BR OVC002 19/18 A2990 RMK AO2 SLP129 T01890178  
METAR KHOU 041152Z 15004KT 5SM BR BKN006 OVC010 19/18 A2990 RMK AO2 CIG 004V009 SLP129 T01890178 10189 20178 55004  
METAR KHOU 041153Z COR 15004KT 5SM BR BKN006 OVC010 19/18 A2990 RMK AO2 CIG 004V009 SLP129 T01890178 10189 20178 55004  
SPECI KHOU 041200Z 16004KT 6SM BR BKN004 OVC010 19/18 A2991 RMK AO2 CIG 004V008

METAR KGLS 040052Z AUTO 11008KT 10SM BKN016 OVC027 18/16 A2999 RMK AO2 SLP155 T01780156  
METAR KGLS 040152Z AUTO 11006KT 10SM SCT022 BKN028 OVC038 17/16 A3000 RMK AO2 SLP160 T01720156  
SPECI KGLS 040201Z AUTO 11006KT 10SM FEW024 OVC038 17/16 A3001 RMK AO2  
METAR KGLS 040252Z AUTO 11008KT 10SM OVC042 17/16 A3001 RMK AO2 SLP161 T01720156 51006  
METAR KGLS 040352Z AUTO 11010KT 10SM BKN048 17/16 A3000 RMK AO2 SLP160 T01720156  
METAR KGLS 040452Z AUTO 11008KT 10SM OVC050 18/16 A3000 RMK AO2 SLP158 T01780161  
METAR KGLS 040552Z AUTO 11010KT 9SM FEW014 17/16 A2998 RMK AO2 SLP151 T01720161 10178 20167 402110133 58009  
SPECI KGLS 040559Z AUTO 11011KT 8SM FEW005 SCT010 BKN027 17/16 A2998 RMK AO2  
SPECI KGLS 040605Z AUTO 11011KT 8SM BKN007 BKN012 17/16 A2998 RMK AO2  
SPECI KGLS 040620Z AUTO 11011KT 3SM BR BKN004 OVC010 18/17 A2997 RMK AO2  
SPECI KGLS 040622Z AUTO 12011KT 1 3/4SM BR BKN002 OVC008 18/17 A2997 RMK AO2  
METAR KGLS 040652Z AUTO 12010KT 1SM BR OVC002 18/17 A2996 RMK AO2 SLP146 T01780172  
SPECI KGLS 040725Z AUTO 12009KT 2 1/2SM BR OVC002 17/17 A2995 RMK AO2

METAR KGLS 040752Z AUTO 11009KT 2SM BR OVC002 17/17 A2994 RMK AO2 SLP139 T01720167  
SPECI KGLS 040822Z AUTO 10006KT 1 1/4SM BR OVC002 17/17 A2993 RMK AO2  
SPECI KGLS 040831Z AUTO 11007KT 3/4SM BR VV001 17/17 A2993 RMK AO2  
METAR KGLS 040852Z AUTO 10007KT 1/2SM FG VV001 17/17 A2992 RMK AO2 SLP131 T01720167 58020  
SPECI KGLS 040940Z AUTO 12007KT 3/4SM BR SCT001 OVC008 18/17 A2991 RMK AO2  
SPECI KGLS 040947Z AUTO 11006KT 1 1/4SM BR BKN001 OVC008 18/17 A2991 RMK AO2  
METAR KGLS 040952Z AUTO 11007KT 1 1/2SM BR BKN001 OVC008 18/17 A2991 RMK AO2 SLP129 T01780172  
SPECI KGLS 041009Z AUTO 12007KT 3/4SM BR OVC003 18/17 A2991 RMK AO2  
METAR KGLS 041052Z AUTO 13006KT 3/4SM BR OVC002 18/17 A2992 RMK AO2 SLP131 T01780172  
SPECI KGLS 041109Z AUTO 12006KT 1SM BR OVC002 17/17 A2991 RMK AO2  
SPECI KGLS 041117Z AUTO 13006KT 3/4SM BR BKN002 OVC010 17/17 A2991 RMK AO2  
SPECI KGLS 041130Z AUTO 13005KT 1 1/4SM BR BKN002 OVC010 18/17 A2991 RMK AO2

METAR MMTG 032349Z 31015KT 10SM FEW025 SCT080 27/18 A2988 RMK SLP088 51003 971 8/430  
METAR MMTG 040051Z 31016KT 10SM BKN080 26/19 A2990 RMK 8/030 ISOLD SC  
METAR MMTG 040147Z 31015KT 8SM SCT080 26/19 A2993 RMK 8/030 HZY  
METAR MMTG 040246Z 31008KT 8SM SCT080 25/19 A2995 RMK SLP102 52017 972 8/030 HZY  
METAR MMTG 040353Z 00000KT 8SM SCT080 25/19 A2998 RMK 8/030 HZY  
METAR MMTG 040450Z 32003KT 8SM SKC 23/19 A2999 RMK HZY ISOLD AC CI  
METAR MMTG 041149Z 00000KT 7SM FEW300 17/16 A2997 RMK SLP116 5//// 965 8/002 BCBR VC RTS  
METAR MMTG 041245Z 00000KT 4SM SKC 17/16 A3000 RMK BR  
METAR MMTG 041351Z 00000KT 5SM SKC 21/17 A3003 RMK HZY

#####

# large TAF from KHOU

#####

201103040911 KHOU 040911Z 0409/0506 15003KT 4SM BR OVC004  
TEMPO 0409/0411 1SM BR OVC002 FM041100 VRB02KT  
3SM BR OVC005  
TEMPO 0411/0414 1/2SM FG OVC002 FM041500  
15007KT 6SM BR SCT007 OVC015 FM041600 16009KT  
P6SM SCT015 BKN025 FM041900 16010KT P6SM  
BKN030 BKN250 FM050400 15007KT 6SM BR SCT007  
OVC012=

201103040722 KHOU 040722Z 0407/0506 12005KT P6SM SCT007 OVC020  
TEMPO 0407/0409 6SM BR BKN005 BKN012 FM040900  
13003KT 4SM BR BKN007 OVC012 FM041100 VRB02KT  
3SM BR OVC005  
TEMPO 0411/0414 1/2SM FG OVC002 FM041500  
15007KT 6SM BR SCT007 OVC015 FM041600 16009KT  
P6SM SCT015 BKN025 FM041900 16010KT P6SM  
BKN030 BKN250 FM050400 15007KT 6SM BR SCT007  
OVC012=

201103040520 TAF KHOU 040520Z 0406/0506 12005KT P6SM SCT007 SCT012 OVC035  
TEMPO 0406/0409 6SM BR BKN012 OVC030 FM040900

13003KT 4SM BR BKN007 OVC012 FM041100 VRB02KT  
2SM BR OVC005  
TEMPO 0411/0414 00000KT 1/2SM FG FM041500  
15007KT 6SM BR SCT007 OVC015 FM041600 16009KT  
P6SM SCT015 BKN025 FM041900 16010KT P6SM  
BKN030 BKN250 FM050400 15007KT 6SM BR SCT007  
OVC012=

201103040433 KHOU 040433Z 0405/0424 13006KT P6SM SCT015 OVC040  
TEMPO 0405/0407 BKN015 OVC040 FM040700 15005KT  
6SM BR BKN012 OVC030 FM040900 15002KT 3SM  
BR OVC006  
TEMPO 0409/0413 1/2SM FG OVC004 FM041500  
15007KT P6SM SCT008 BKN015 FM041700 16009KT  
P6SM SCT030 BKN250=

201103040250 KHOU 040250Z 0403/0424 14005KT P6SM BKN015 OVC035  
TEMPO 0403/0405 SCT015 OVC035 FM040500 15005KT  
6SM BR BKN008 FM040900 15002KT 1SM BR OVC006  
TEMPO 0409/0413 1/2SM FG OVC004 FM041500  
15007KT P6SM SCT008 BKN015 FM041700 16009KT  
P6SM SCT030 BKN250=

#####

# large TAF from KGLS

#####

201103040913 KGLS 040913Z 0409/0506 10007KT 1/2SM FG VV001  
TEMPO 0410/0414 1/4SM FG VV001 FM041500 15008KT  
3SM BR OVC007 FM041700 15011KT 6SM HZ SCT012  
BKN025 FM050300 14010KT 1/2SM FG BKN002  
OVC007=

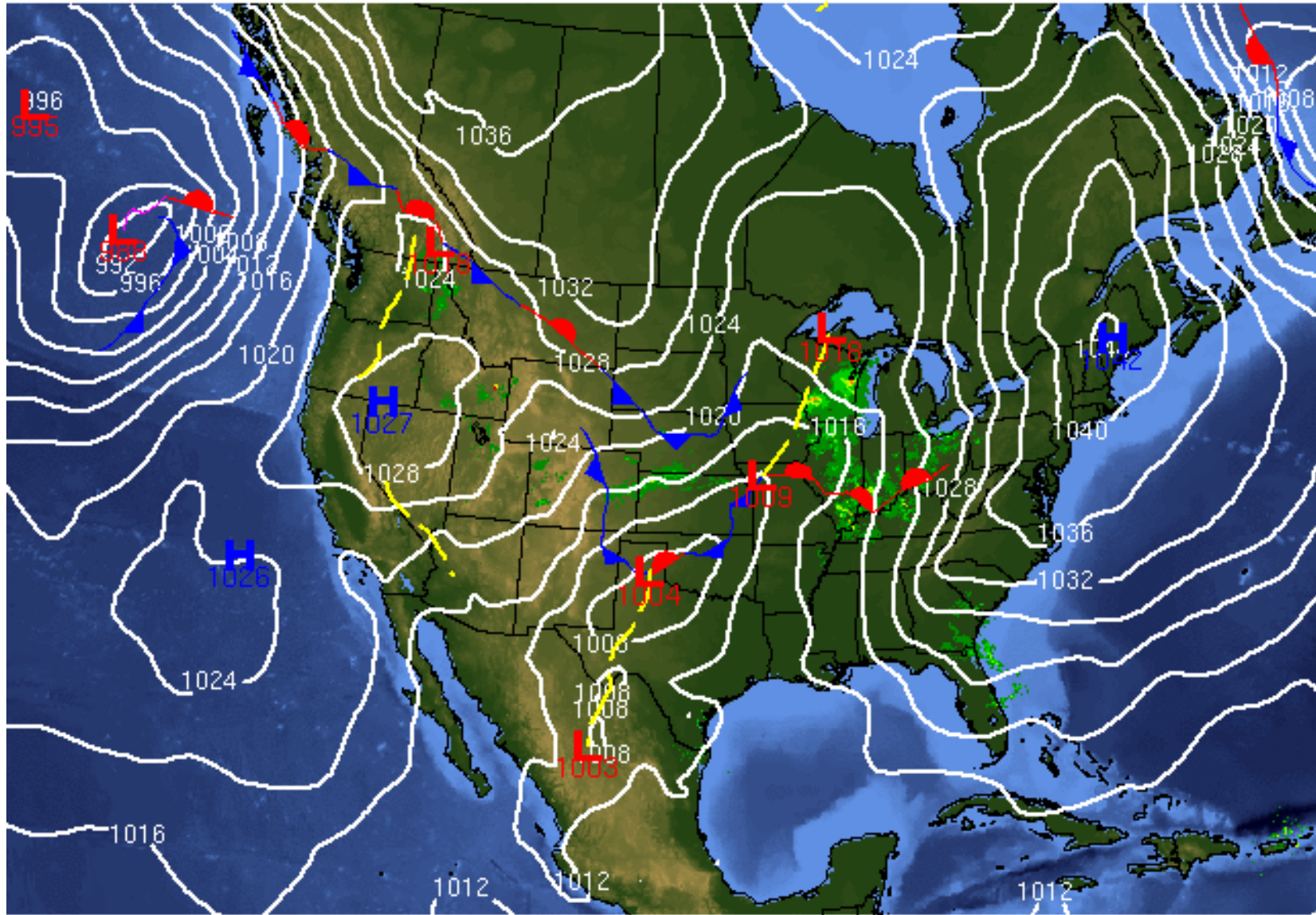
201103040728 KGLS 040728Z 0407/0506 12010KT 1SM BR OVC002  
TEMPO 0407/0410 1/4SM FG VV001 FM041000 13007KT  
1/2SM FG OVC002  
TEMPO 0410/0414 1/4SM FG VV001 FM041500 15008KT  
3SM BR OVC007 FM041700 15011KT 6SM HZ SCT012  
BKN025 FM050300 14010KT 1/2SM FG BKN002  
OVC007=

201103040520 TAF KGLS 040520Z 0406/0506 12008KT 6SM BR SCT012 OVC035  
TEMPO 0406/0408 4SM BR BKN012 OVC030 FM040800  
12008KT 4SM BR OVC007 FM041000 13007KT 1/2SM  
FG OVC004 FM041500 15008KT 3SM BR OVC007  
FM041700 15011KT 6SM HZ SCT012 BKN025 FM050300  
14010KT 1/2SM FG BKN002 OVC007=

201103040418 KGLS 040418Z 0404/0424 12009KT P6SM SCT020 OVC035  
TEMPO 0404/0406 SCT012 BKN020 OVC035 FM040600  
12008KT 6SM BR BKN012 OVC025 FM040800 12008KT

3SM BR OVC007 FM041000 12007KT 1/2SM FG  
OVC004 FM041500 14008KT 2SM BR OVC007 FM041700  
14011KT 6SM HZ SCT012 BKN025=  
201103040216 KGLS 040216Z 0402/0424 12008KT P6SM SCT020 OVC035  
TEMPO 0402/0405 SCT012 BKN020 OVC035 FM040500  
12008KT 6SM BR BKN012 OVC025 FM040700 12008KT  
3SM BR OVC007 FM040900 12007KT 1/2SM FG  
OVC004 FM041500 14008KT 2SM BR OVC007 FM041700  
14011KT 6SM HZ SCT012 BKN025=

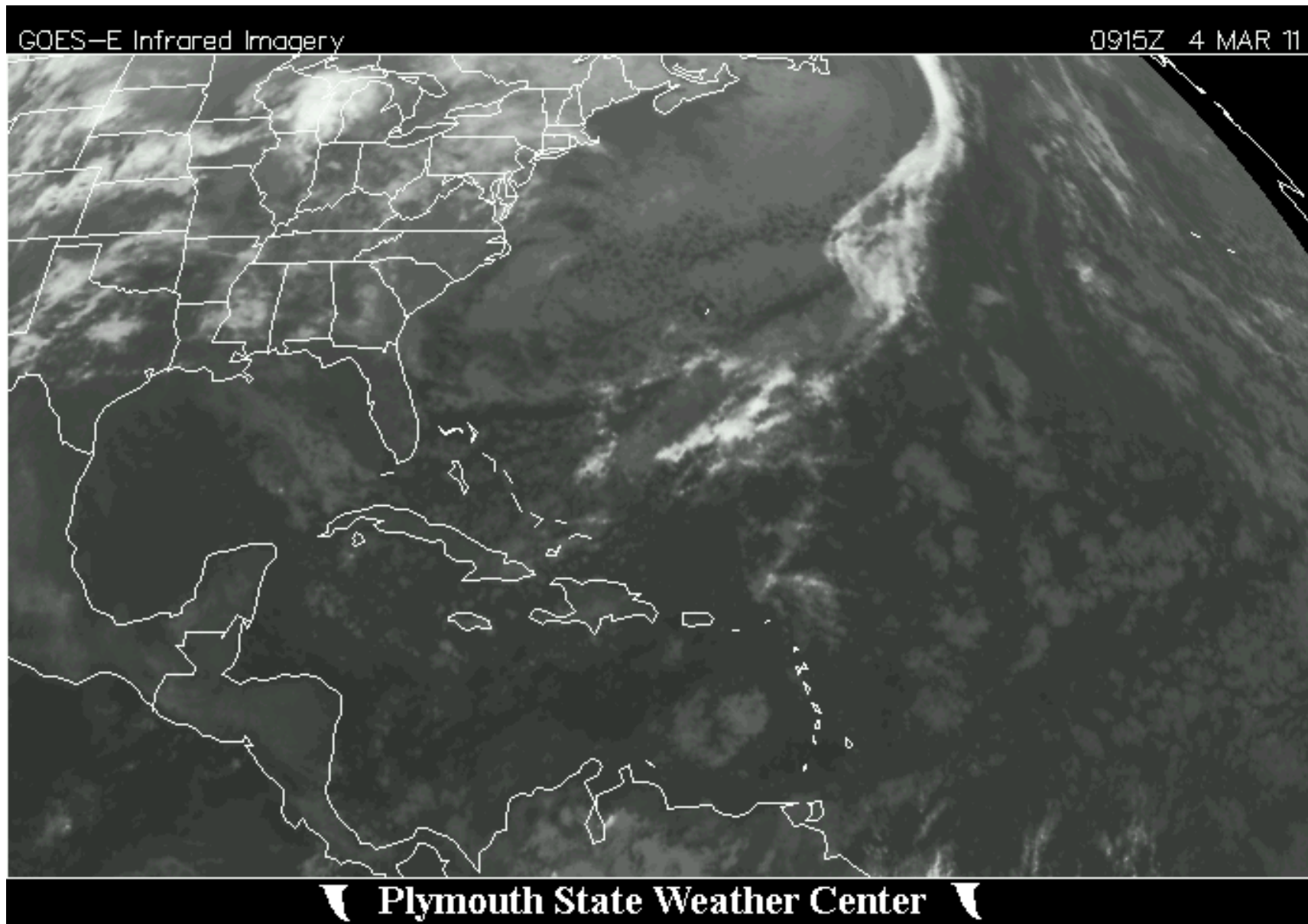
Weather - U S Surface Analysis chart at 0900z on Mar 4 2011



09Z 04 Mar 2011

University of Wyoming

Weather - GOES-E Infrared at 0915z on Mar 4 2011



**U.S. Naval Observatory  
Astronomical Applications Department**

**Sun and Moon Data for One Day**

The following information is provided for Houston, Harris County, Texas (longitude W95.4, latitude N29.8):

Friday  
4 March 2011

Central Standard Time

**SUN**

Begin civil twilight	6:20 a.m.
Sunrise	6:44 a.m.
Sun transit	12:33 p.m.
Sunset	6:23 p.m.
End civil twilight	6:47 p.m.

**MOON**

Moonset	5:36 p.m. on preceding day
Moonrise	6:21 a.m.
Moon transit	12:22 p.m.
Moonset	6:29 p.m.
Moonrise	6:50 a.m. on following day

New Moon on 4 March 2011 at 2:46 p.m. Central Standard Time.

[Back to form](#)