

Weather – K3T5 091315Z AUTO 15004KT 10SM BKN029 19/17 A3005

(CST time is equal to UCT time minus six hours - 0715 hours CST = 1315 hours UCT)

K3T5 Airport – La Grange TX, elevation 324 feet msl, is 1 nautical mile at 182 degrees from the accident site

K3T5 091355Z AUTO 15005KT 10SM BKN029 20/18 A3006 RMK AO2=

K3T5 091335Z AUTO 15004KT 10SM BKN029 20/18 A3006 RMK AO2=

K3T5 091315Z AUTO 15004KT 10SM BKN029 19/17 A3005 RMK AO2=

K3T5 091255Z AUTO 16005KT 10SM BKN029 19/17 A3005 RMK AO2=

K3T5 091235Z AUTO 16005KT 10SM SCT029 19/17 A3004 RMK AO2=

PIREPS

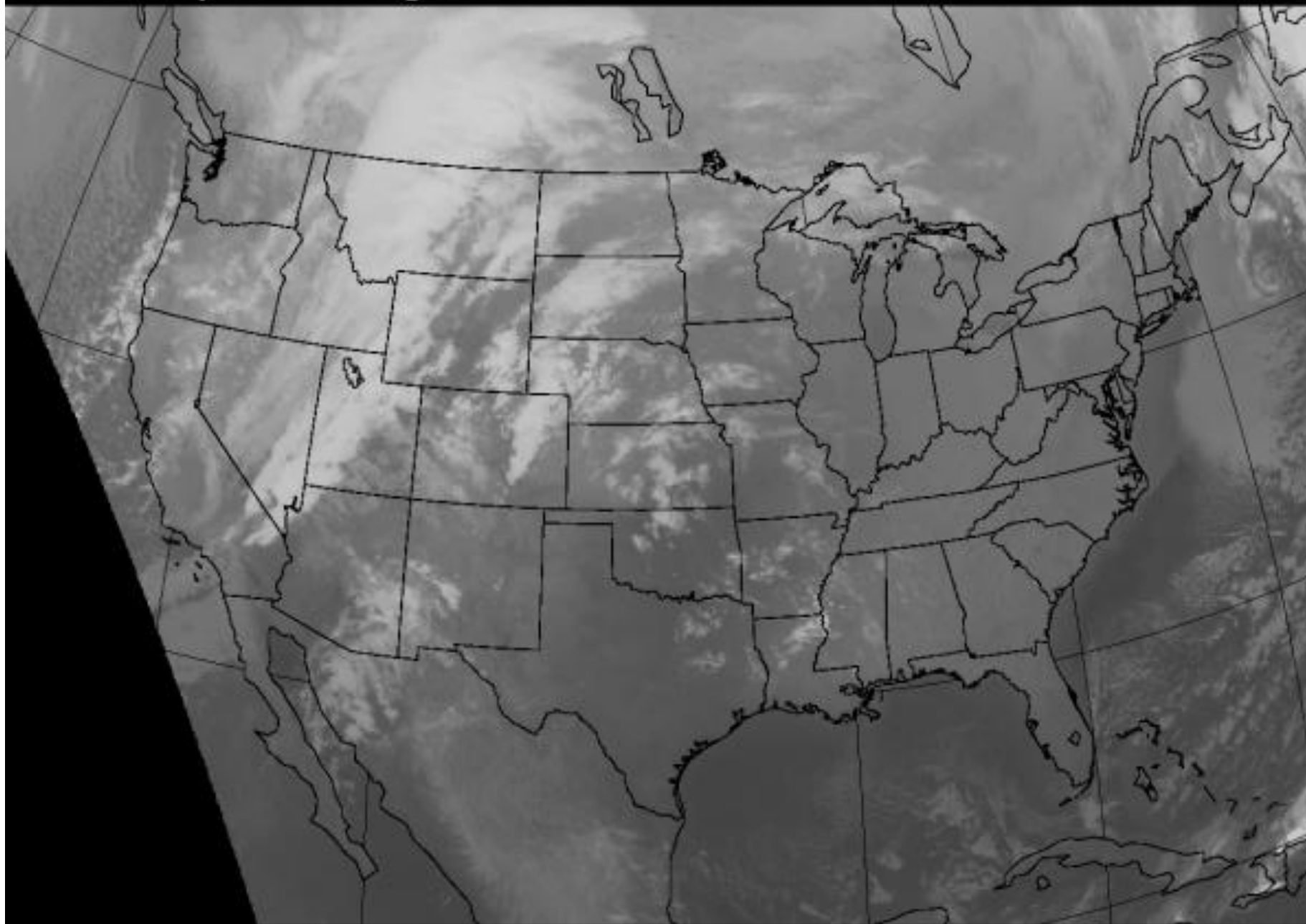
GTU UA /OV GTU170001/TM 1303/FL017/TP C421/SK BKN013-TOP017/RM HIGHER LAYER ABOVE

SKF UA /OV SAT180030/TM 1400/FL160/TP BE20/TB LGT-MOD CHOP/RM AWC-WEB/KZHU

VCT UA /OV VCT/TM 1426/FL020/TP H60/SK SCT025/WV 18030KT/TB NEG

GOES-Composite IR Image

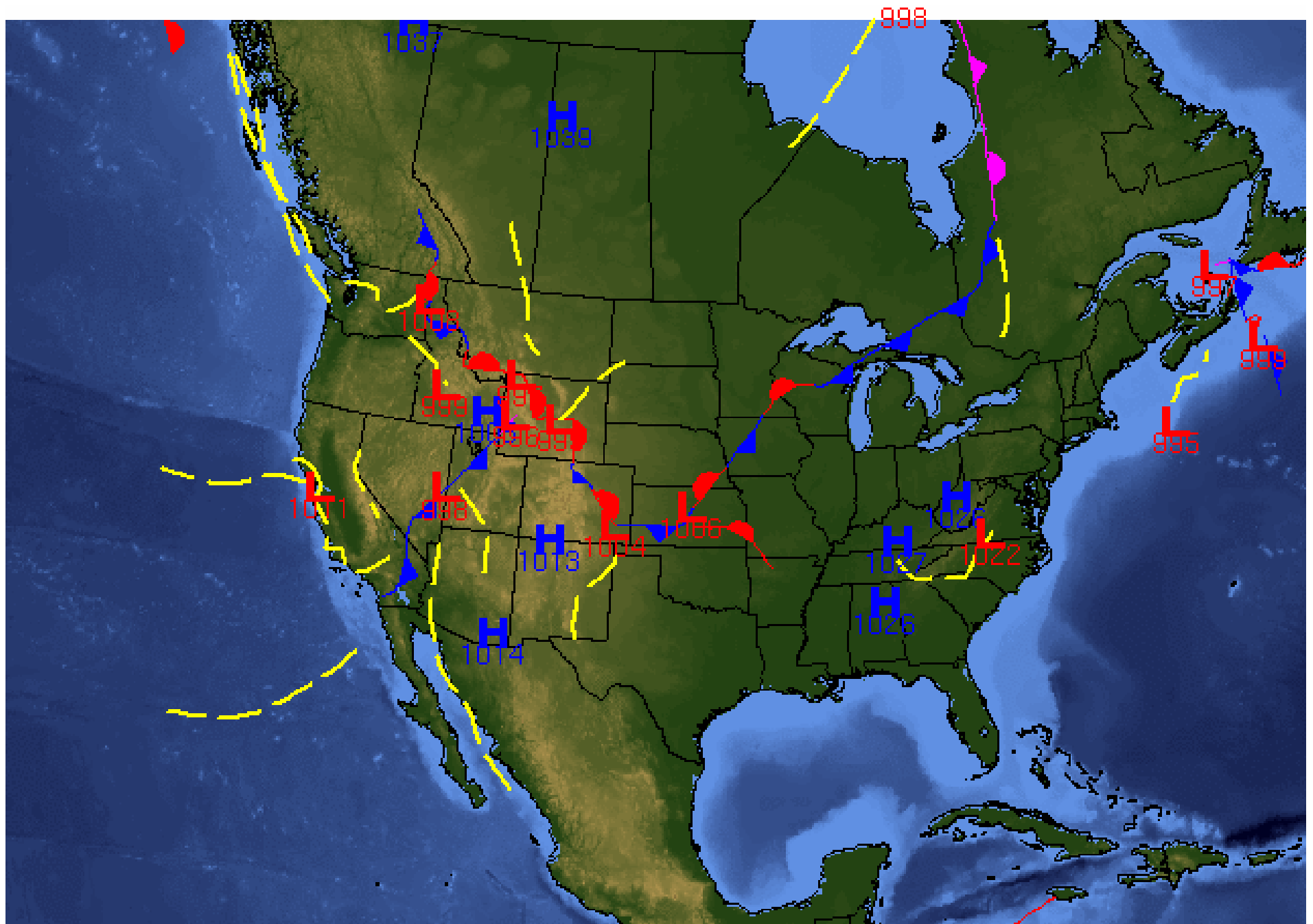
13Z Fri Nov 09 2012



WW2010

(<http://ww2010.atmos.uiuc.edu/>)

Atmospheric Sciences, University of Illinois at Urbana-Champaign



12Z 09 Nov 2012

University of Wyoming