

# UAL880 IAH-LHR 30AUG2016 INFORMATION PROVIDED BY UNITED

Flight Number	880
Date	30Aug2016
Aircraft Type	B763
City Pairs	IAH - LHR
Location	50nm East of 46N40W (~46N/38.47W)
Description	Flight had multiple injuries due to encountering severe turbulence, diverted to SNN. 45 seconds of severe turbulence was reported 50nm east of 46N40W at FL340. Seat belt signs were not on, FAs were not seated
Flight Level	FL340
Injuries	3FAs and 20 PAX

# UAL880 IAH-LHR 30AUG2016

## WEATHER ANALYSIS

- Turbulence occurred on the southeast side of upper level low. Isolated CBs/convection was building up along this region.
- Satellite imagery shows convective buildup/enhancement in form of isolated cell where turbulence was reported.
- Isolated lightning occurred north of area 45 minutes prior to event, indicated convective development in the general region.
- Wind and temperature pattern do not indicate turbulence was due to synoptic (large scale) weather pattern and was isolated to convective development associated with upper level low.
- AMDAR Winds confirm lack of directional or speed shear.
- RPM Turbulence did not indicate presence of Clear Air Turbulence.
- WAFC HiSig forecast supports expected isolate convection in the region.
- WSI Forecast had OCNL MOD Turbulence with diverging winds well north of the region.

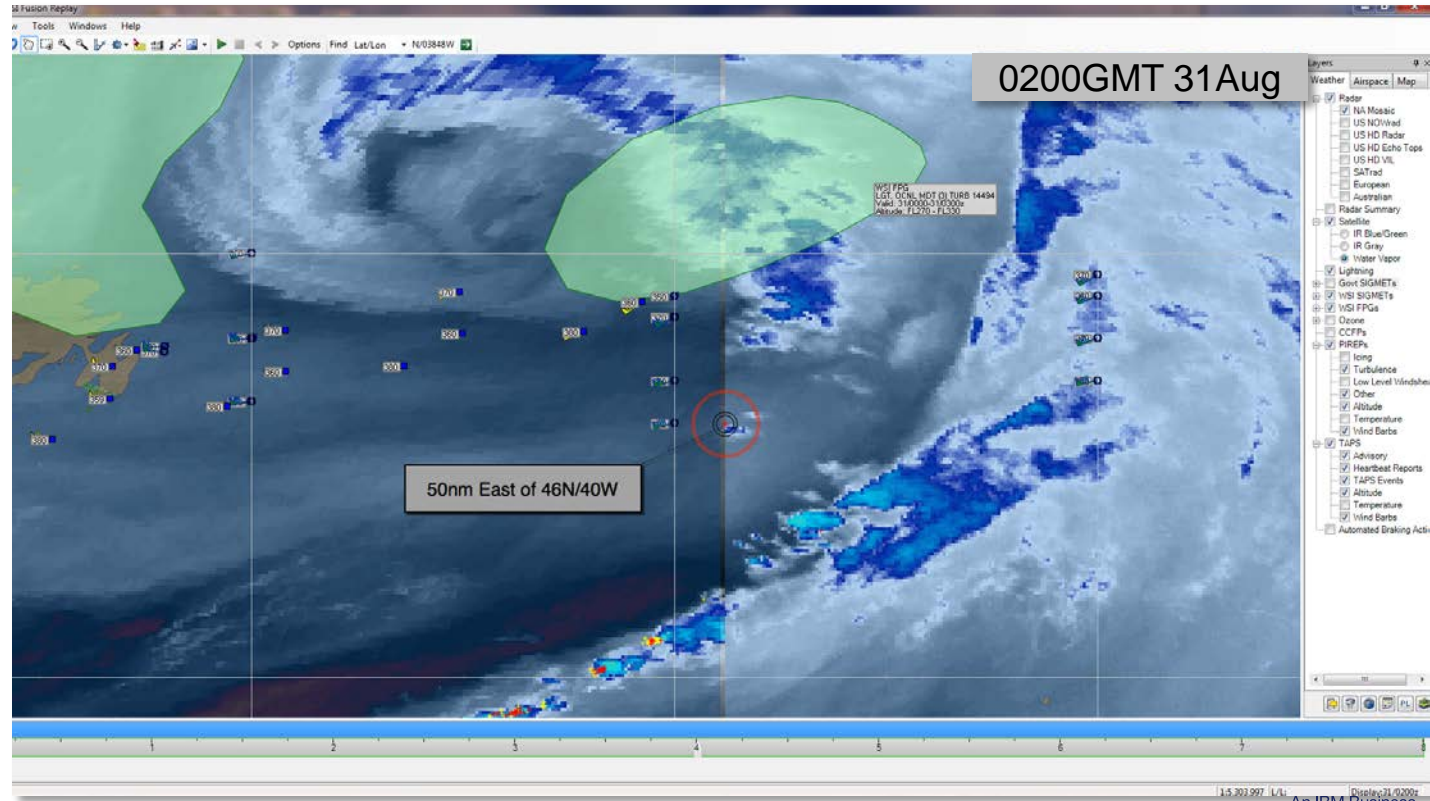
# UAL880 IAH-LHR 30AUG2016

## PIREPS/TAPS Reports

No other turbulence PIREPs or TAPS reports in the vicinity.

PIREP along 40W reported smooth ride at FL370.

WSI FPG further north (~50N) associated with diverging winds

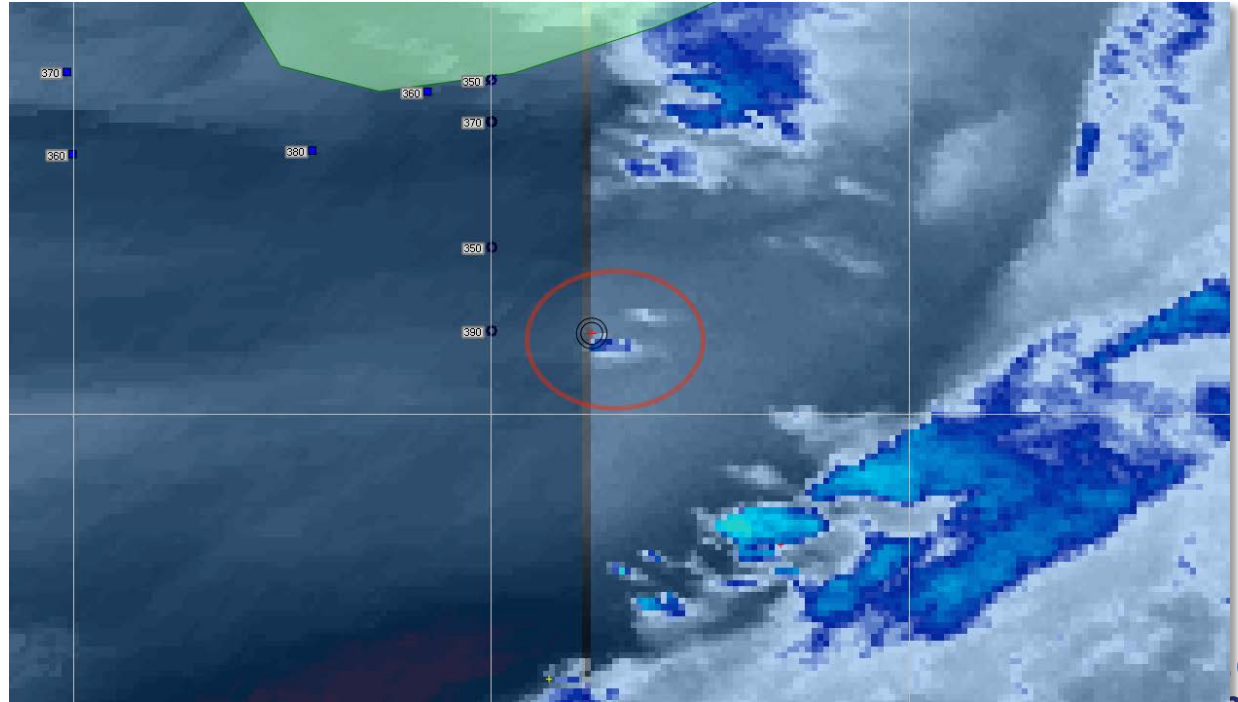


# UAL880 IAH-LHR 30AUG2016

WATERVAPOR 0200 GMT 31AUG2016

Note isolated convective buildup in vicinity of where turbulence was reported.

Never produced lightning, but buildup associated with upper level trough

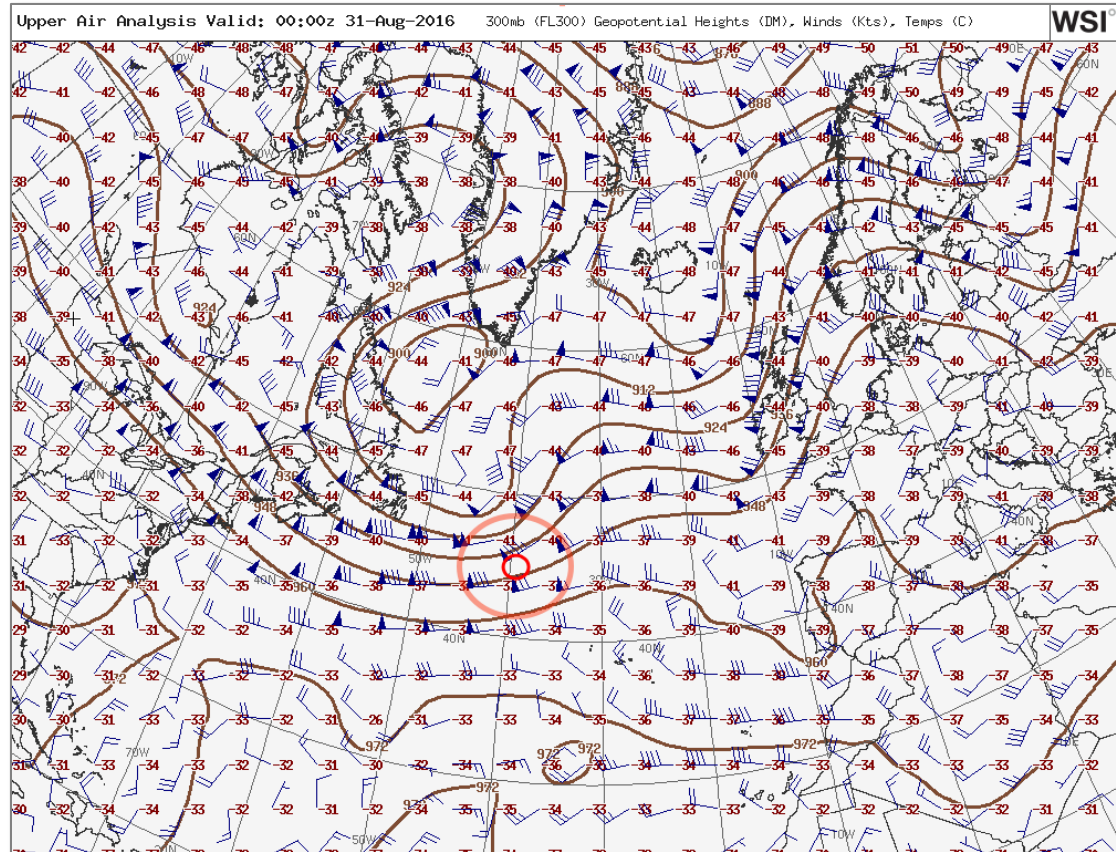


# UAL880 IAH-LHR 30AUG2016

WIND/TEMP

Wind/Temp Analysis  
Chart valid 0000GMT

Turbulence occurred  
southeast of upper low,  
along upper level  
trough.

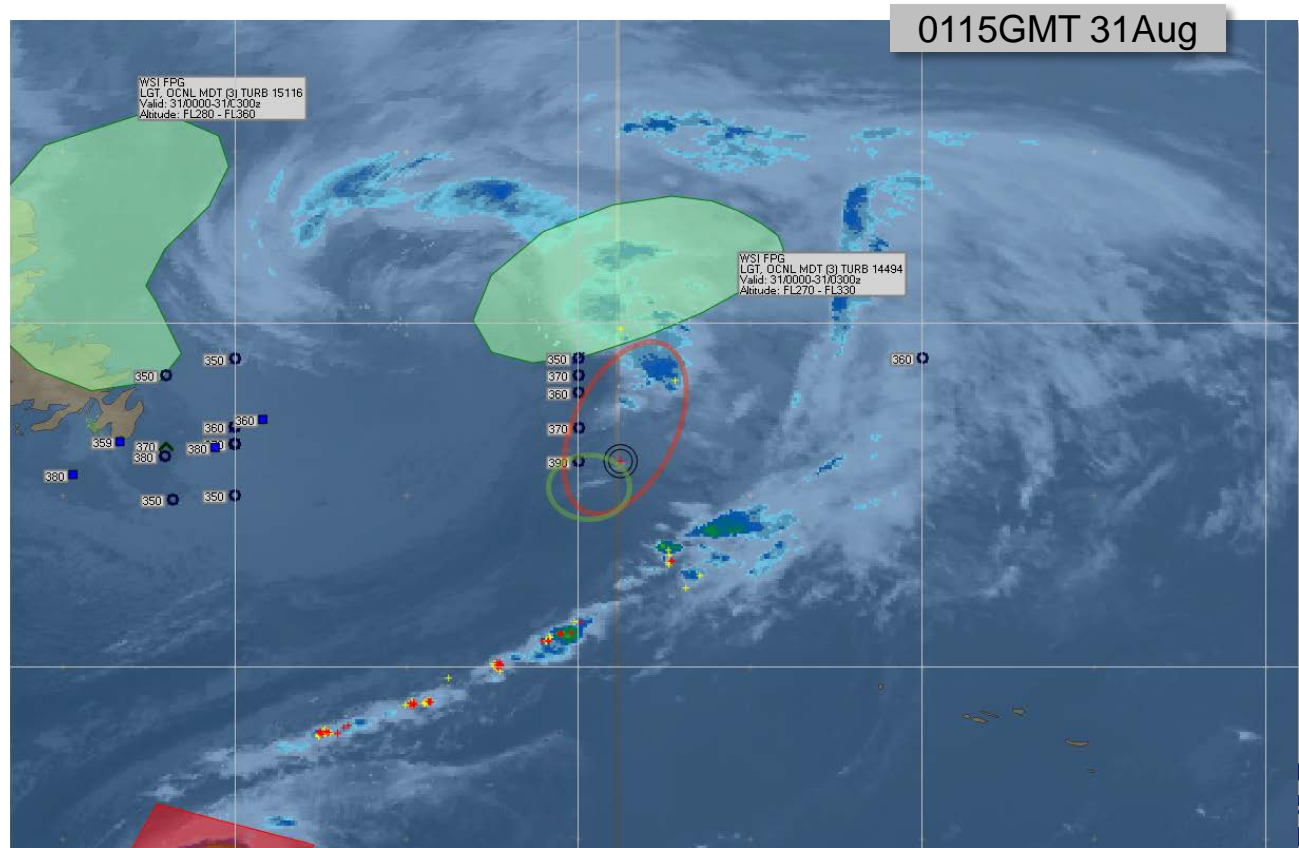


# UAL880 IAH-LHR 30AUG2016

## IR IMAGERY

Convection associated with upper level trough at 0115GMT.

Area in green circle shows an enhancement in the cloud where a weak convective cell developed



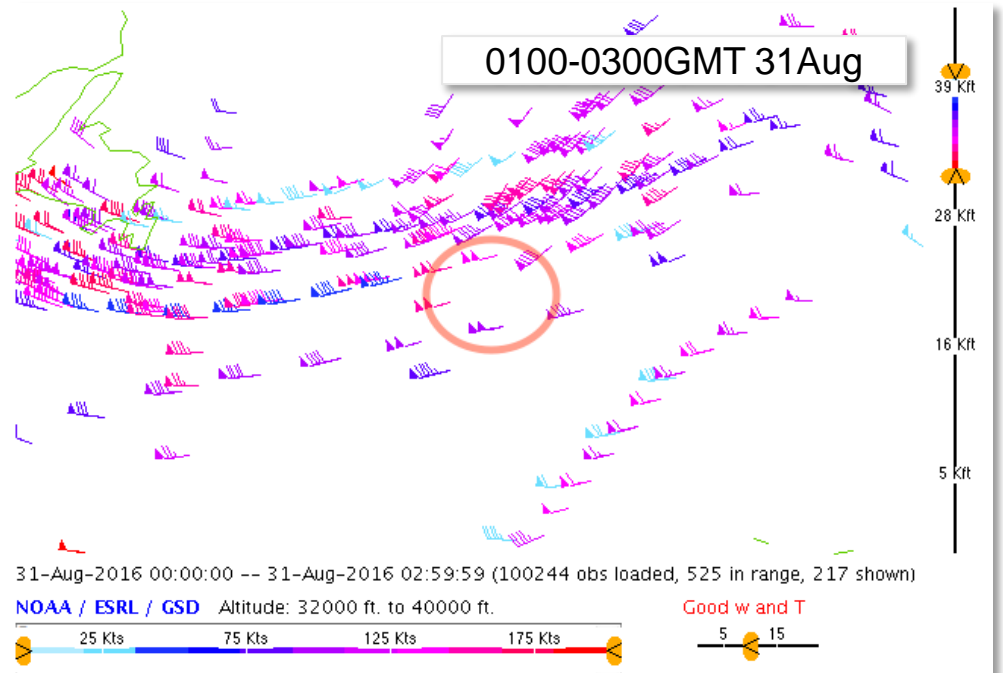


# UAL880 IAH-LHR 30AUG2016

## AMDAR Reports

AMDAR winds show winds are fairly consistent across this area with no strong speed or directional shear.

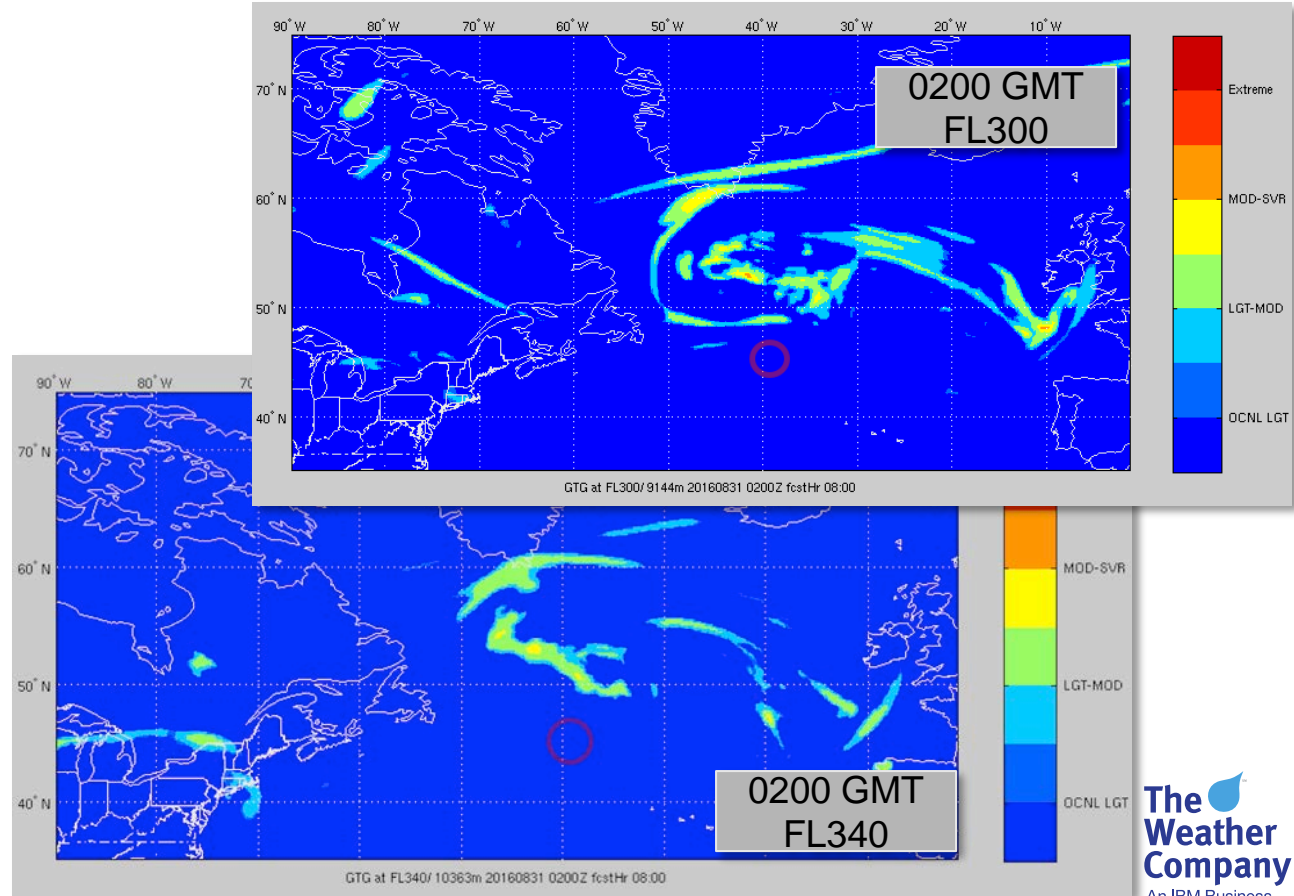
- Purple bars represent ~FL360
- Darker blue bars represent winds from FL380-400
- Red blue barbs represent from FL320-FL340



# UAL880 IAH-LHR 30AUG2016

RPM Turbulence, 8  
hour forecast,  
generated at 1800Z  
30Aug2016 at FL300  
(top) and FL340  
(bottom)

Does not indicate any  
area of turbulence  
where report occurred.  
Turbulence expected  
further north.





# UAL880 IAH-LHR 30AUG2016

## HISIG CHART

High Level Significant Weather forecast valid at 0000GMT indicates isolated CB development where turbulence occurred.

