

NATIONAL TRANSPORTATION SAFETY BOARD

Vehicle Recorder Division

Washington, D.C. 20594

February 2, 2007

Video Factual Report

NTSB Accident Number:

DCA07MA003

by **Douglass P. Brazy**

A. ACCIDENT

Location: Manhattan, NY
Date: October 11, 2006
Time: 14:42 Eastern Daylight Time
Aircraft: Cirrus Design SR30, N929CD

B. GROUP

N/A

C. SUMMARY

On October 11, 2006, about 1442 eastern daylight time, a Cirrus Design SR-20, N929CD, crashed into an apartment building while maneuvering above Manhattan, New York. The airplane was destroyed by impact forces and a post-crash fire. The certificated private pilot owner of the airplane, and a certified flight instructor were fatally injured. Marginal Visual Flight Rules conditions prevailed, and no flight plan was filed for the flight that departed Teterboro Airport (TEB), Teterboro, New Jersey. The personal sightseeing flight was conducted under the provisions of 14 Code of Federal Regulations Part 91. There were 1 severe and 2 minor injuries on the ground.

Materials Received

The NTSB Vehicle Recorder Division received an Audio Video Interleave (AVI) format file from the Investigator-In-Charge. The file contained video imagery from a surveillance camera operated by the U.S. Coast Guard's Vessel Traffic Service. The recording system specifications were not provided, however a few details about the file were retrieved:

Filename: 11OCT06_EWI_135392.avi

File size: 350.51K bytes

Average data rate: 3.50K per second

Image size: 320 x 240

Pixel depth: 24 bits

Frame rate: 2.00 fps

AVI File details:

Contains 1 video track(s) and 0 audio track(s).

Video track 1:

Total duration is 100 seconds

There are 10 keyframes, 142 delta frames.

There are 48 empty frames.

Compressor: 'MP42', Microsoft MPEG-4 Video Codec V2

Recording Content

The camera view is toward the southwest, from a location about 1.6 statute miles northeast of the accident site. The precise camera location was not provided, an approximate location was determined based on the camera's view and data from a Geographical Information System.¹ For reference, Roosevelt Island is in the center of the map in figure 1.

¹ Google Earth

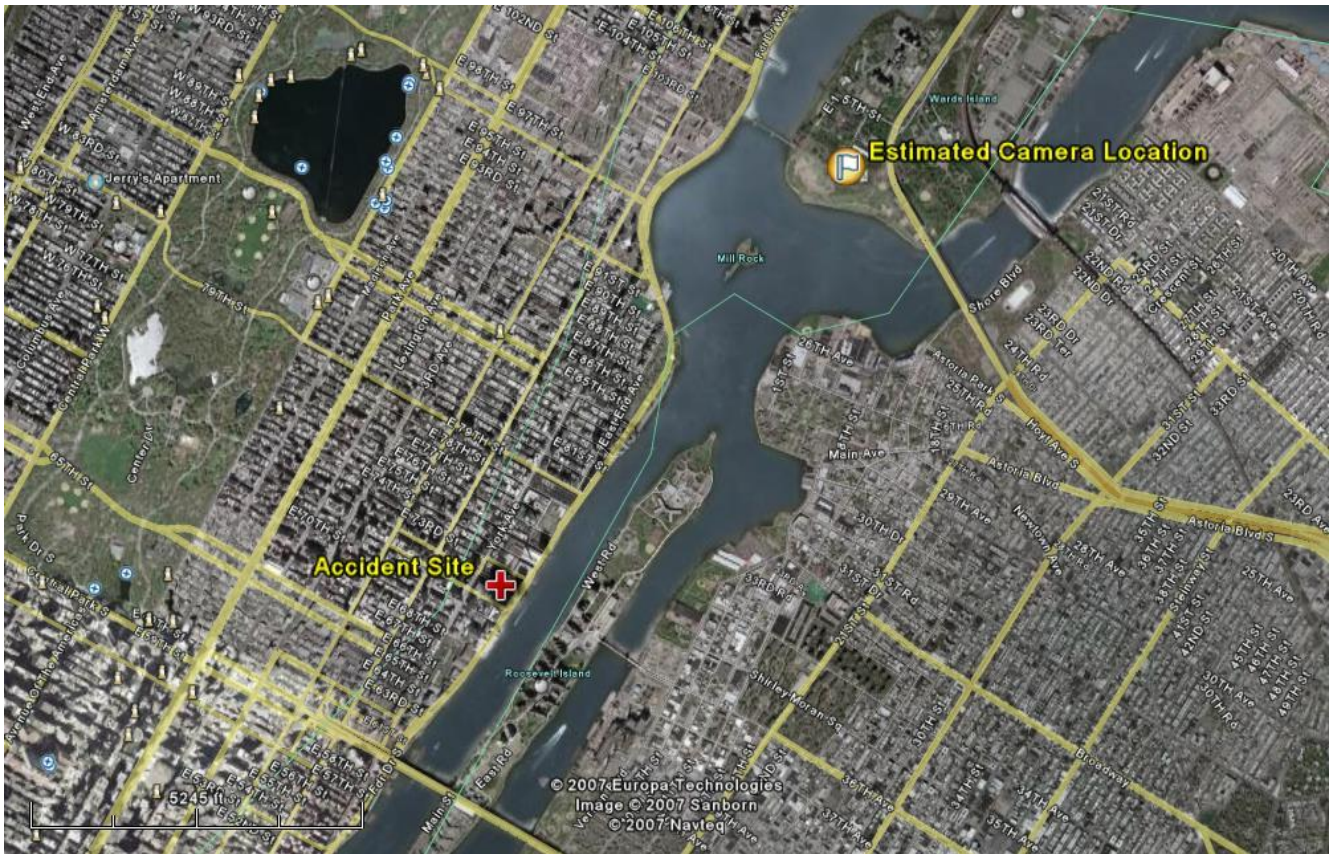


Figure 1 - Camera Location

The camera view looks down the west channel of the East River, along Roosevelt Island. The Queensboro Bridge can be seen in the distance on the horizon. Figure 2 is the first image of the recording.



Figure 2 - First Image

According to the time of day clock seen in the lower left corner of the view, this recording began at 14:50:04 and ended at 14:51:43 on October 11, 2006.

The airplane is not visible during any portion of this recording. This is likely due to the relatively small size of the airplane, given the recorded image size and field of view. It is also possible that the recording's compression method did not maintain sufficient detail to discern the airplane. According to the USCG, this is the best copy of the recording available and no other formats exist.

At an indicated time of 14:50:26, an explosion/fire can be seen near the buildings on the right side of the image.



Figure 3 - Explosion

A copy of the AVI file is available in the public docket for this accident investigation.

Douglass P. Brazy

NTSB Vehicle Recorder Division

DCA07MA003 – Video Factual Report

Page 4 of 4