



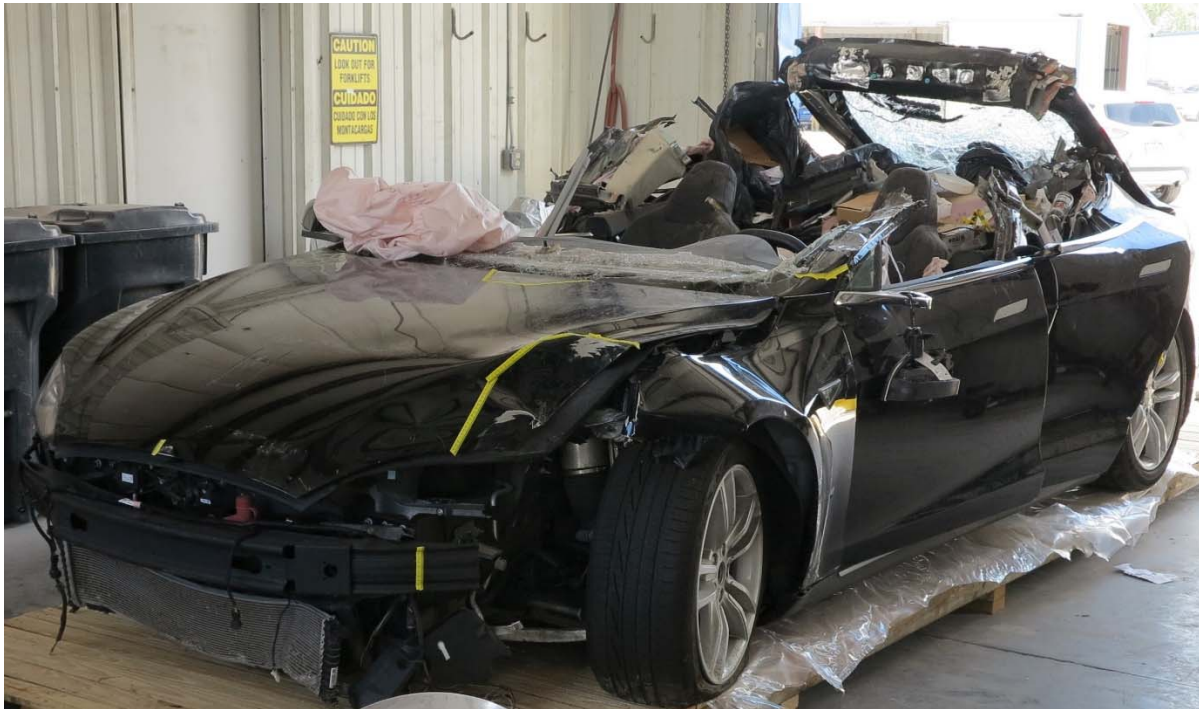
**VEHICLE FACTORS GROUP CHAIRMAN'S
FACTUAL REPORT**

NTSB Vehicle Photographs

Williston, Florida

HWY16FH018

(5 pages)



Vehicle Photograph #1 – Left Front of Tesla

This is a photograph showing the damage to the left front of the Tesla. The front plastic bumper cover is missing. The leading edge of the left side of the hood is bent rearward and slightly upward. The leading edge of the left fender has been crushed rearward to approximately the center of the tire. The forward lower control arm and air spring are visible behind the tire and wheel. The left-front tire is deflated and the left side rearview mirror has been displaced from its mounting bracket.



Vehicle Photograph #2 – Instrument Panel of the Tesla

This photograph was taken from the passenger's side looking towards the steering column and shows the condition of the instrument panel at the time of inspection by NTSB. The instrument panel to the right of the driver and in front of the passenger, along with the center stack console, had all been removed. The photograph also shows the lap top computer stand which had been mounted to the passenger side floorboard.



Vehicle Photograph #3 – Driver's Seat Belt Latch Plate and Buckle

This photograph shows the driver's seat belt latch plate securely locked inside of the buckle assembly.



Vehicle Photograph #4 – The Right Side of the Semi-Trailer

This picture was taken at the initial contact location, which was located at the approximate center of the right side of the semi-trailer. The front of the trailer is to your right and the rear to your left. The photograph was taken in the same direction the Tesla was traveling at the time of the crash. The damage to the semi-trailer outboard rail corresponds to the locations of the “A” pillars on the Tesla. You can see a chrome piece of trim still attached to the forward damaged section. The upside-down U-shape embedded on the siding of the trailer corresponds with the buckled portion of the Tesla’s roof.



Vehicle Photograph #5 – The Left Side of the Semi-Trailer

This photograph was taken looking forward from the rear of the semi-trailer. The photograph shows the exit location of the Tesla from beneath the semi-trailer. The outboard trailer rail is bent outward, to the left, in two locations. The semi-trailer's center marker/turn signal light is broken and the mounting bracket is bent upward.