



Vehicle Attachment 6
2012 IC School Bus – Pages From Operator's Manual

Chesterfield, NJ
HWY-12-MH-007

(6 Pages)

IMPORTANT

IT IS IMPORTANT THAT THE VEHICLE IDENTIFICATION NUMBER (VIN), AND COMPONENT FEATURE CODE AND SERIAL NUMBERS BE RECORDED. THESE NUMBERS ARE REQUIRED TO OBTAIN INFORMATION PERTINENT TO THIS VEHICLE.

VIN (VEHICLE IDENTIFICATION NUMBER) LOCATION

BE, CE, RE, HC, and LC Bus Series Models:
Located left front bulkhead, above driver position

BODY SERIAL NUMBER PLATE

BE, CE, RE, HC, and LC Bus Series Models:
Located right side (curb side), above front window light bar

ENGINE SERIAL NUMBER LOCATION

MAXXFORCE®: Stamped on pad – right side of the crankcase, below cylinder head

CORPORATE HEADQUARTERS

IC Bus, LLC
4201 Winfield Road
Warrenville, Illinois 60555 USA

IC BUS, LLC INTERNET SITE

icbus.com

IC BUS, LLC INFORMATION LINE

1-800-892-7761

COMPONENT IDENTIFICATION NUMBERS

Component Feature Codes appear on the vehicle line set ticket.

Component Serial Numbers appear on the components.

Feature Code: Serial Number:

FRONT AXLE

--	--

REAR AXLE

--	--

TRANSMISSION

--	--

ENGINE

--	--

--	--

--	--

IC Bus and the IC Shield logo are trademarks of IC Bus, LLC in the United States and other countries.

IC Bus, LLC is a wholly owned subsidiary of Navistar, Inc.

MaxxForce is a registered trademark of Navistar, Inc., or its subsidiaries, in the United States and other countries.

All other trademarks are the property of their respective owners.

SECTION 6 — PASSENGER CONTROL

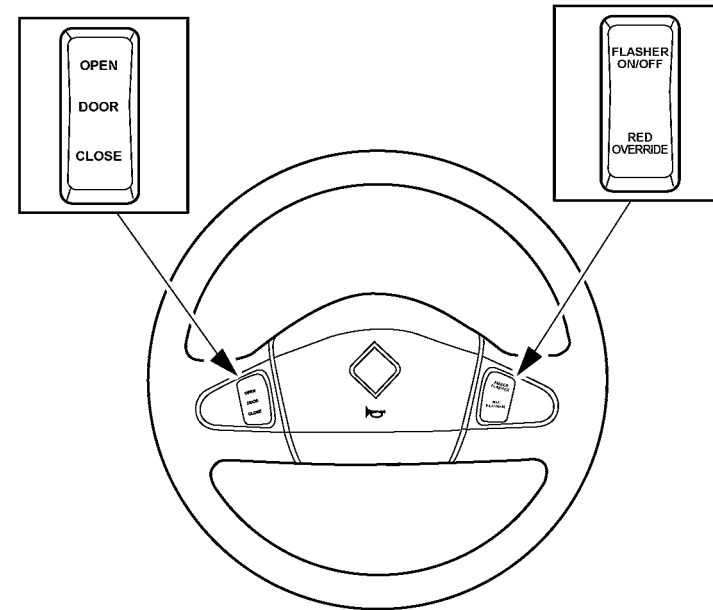
Door Opening/Closing

Opening/Closing



Each child, and all of his/her clothing, backpacks, bookbags and other belongings should be clear of the vehicle before the door is closed and the bus operated. Failure to do so could result in property damage, personal injury or death. Consult with local and state authorities for specific procedures that may apply for children entering or exiting buses.

NOTE: Due to various state and local requirements, the location of the entrance door Open/Close switches shown may be different than your vehicle.



ICB100056

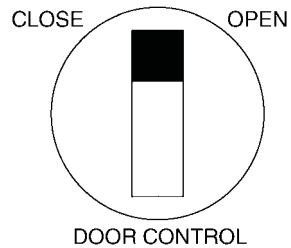
The entrance door Open/Close button is located on the steering wheel in the left button position.

Press the top of the button to open the entrance door.

Press the bottom of the button to close the entrance door.

Passenger Control

Two Position Door Switch



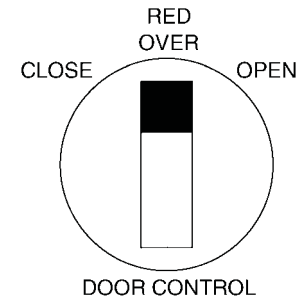
ICB900012

The optional two position door switch is located on the left console switch panel.

With the ignition in the accessory or ignition position, the entrance door can be opened by moving the switch to the OPEN position.

With the ignition in the accessory or ignition position, the entrance door can be closed by moving the switch to the CLOSE position.

Three Position Door Switch



ICB900013

The optional three position door switch is located on the left or right console switch panel.

With the ignition in the accessory or ignition position, the entrance door can be opened by moving the switch to the OPEN position.

With the ignition in the accessory or ignition position, the entrance door can be closed by moving the switch to the CLOSE position.

Moving the switch to the RED OVER position will start the red flashers (assuming the master flasher switch is ON) but will not open or close the entrance door.

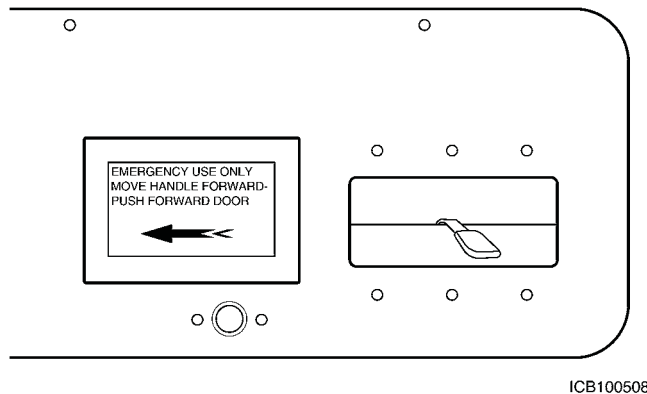
Opening the Entrance Door

Opening the Entrance Door Manually



For outward opening doors, when the door Manual/Automatic switch is in the “manual” position, do not allow anyone to lean against the entrance doors, as they will open allowing a person to fall out of the bus. Failure to do so could result in personal injury or death. The “manual” position is only to be used in Emergency or Service Conditions.

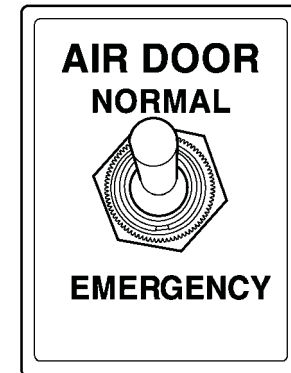
Electric Actuated Door



The emergency release for the electrically actuated door is located behind the access panel over the entrance door. To release the electrically actuated door, grasp the handle and move forward (left).

Air Actuated Door

The emergency release for the air actuated door is located on the right side of the dash panel. To release the air actuated door, move the toggle switch from NORMAL to EMERGENCY.



ICB100158

Traffic Warning System

The Traffic Warning system alerts both oncoming and following drivers when the bus is preparing for safety stops, such as railroad crossing stops, or when loading and unloading passengers. The system consists of an eight-lamp red and amber warning indicator system and an optional electronic safety messages sign. Both of these systems will be described below.

Passenger Control

Electronic Safety Messages

The electronic messaging system is an electronic rear facing LED sign that provides two distinct safety messages to alert drivers when the bus is stopping or stopped. When the amber warning lights are activated, the alternating **Caution - Stopping** LED message is flashes.



3813007

When the red warning lights are activated and the stop arm is deployed, the alternating **Stop – Do Not Pass** LED message flashes. See the description of the Eight-Lamp amber and red warning lights below.



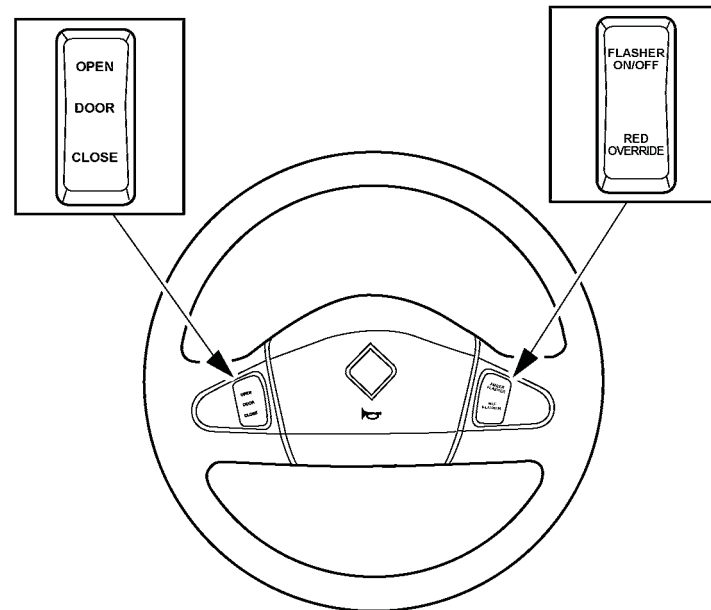
3813008

Eight-Lamp Amber and Red Warning Lights

The eight lamp Amber and Red warning system is made up of four amber (two front and two rear), and four red (two front and two rear) flashing lights, and is part of the warning flasher system.

The amber warning lights alert the public of the intent to stop and load/unload students onto/from the bus. The red warning lights and the stop arm are intended to warn the public that students are boarding or leaving the bus.

The warning indicator control is located on the right side of the steering wheel.



ICB100056