

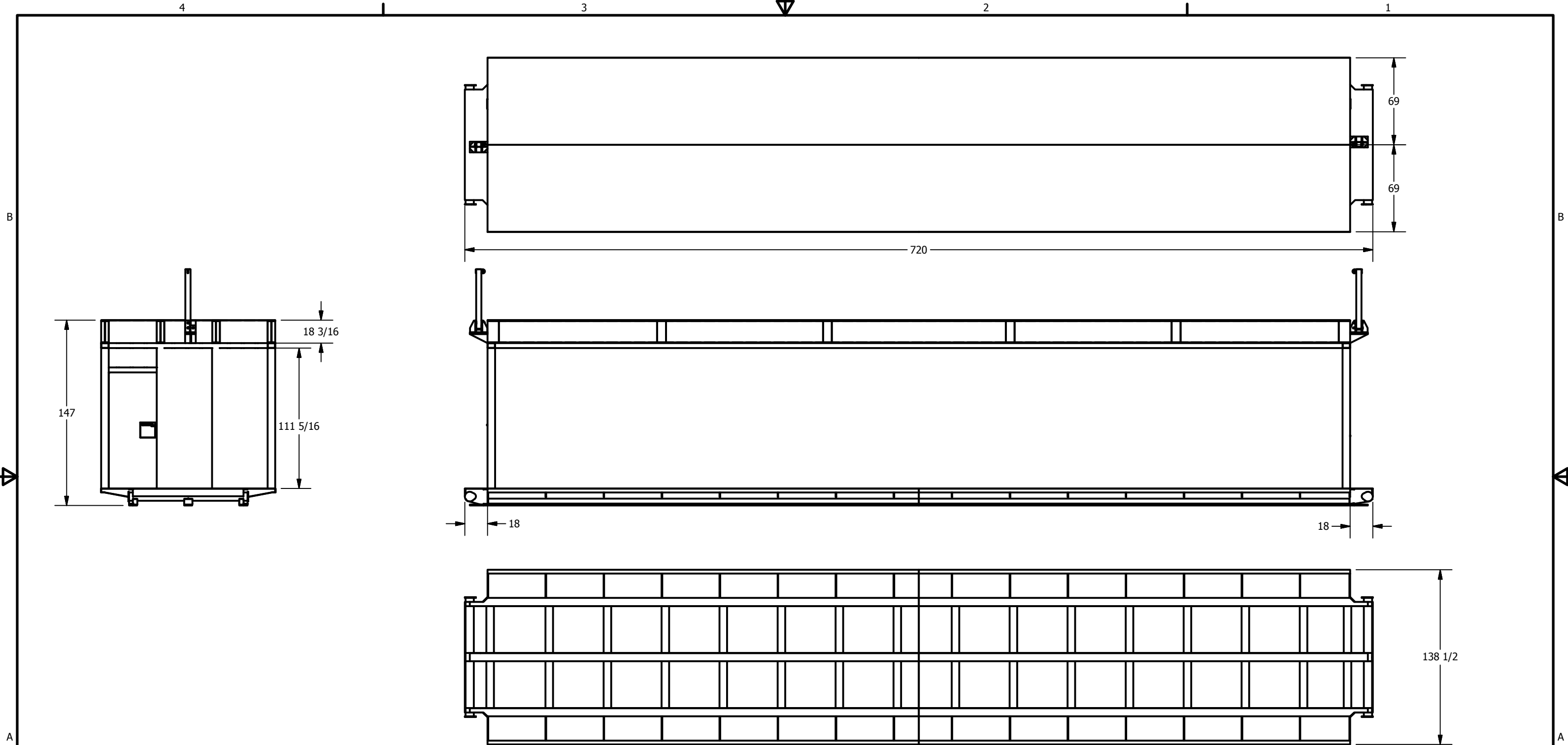



## **Vehicle Attachment 4 – Casing Shed Specifications**

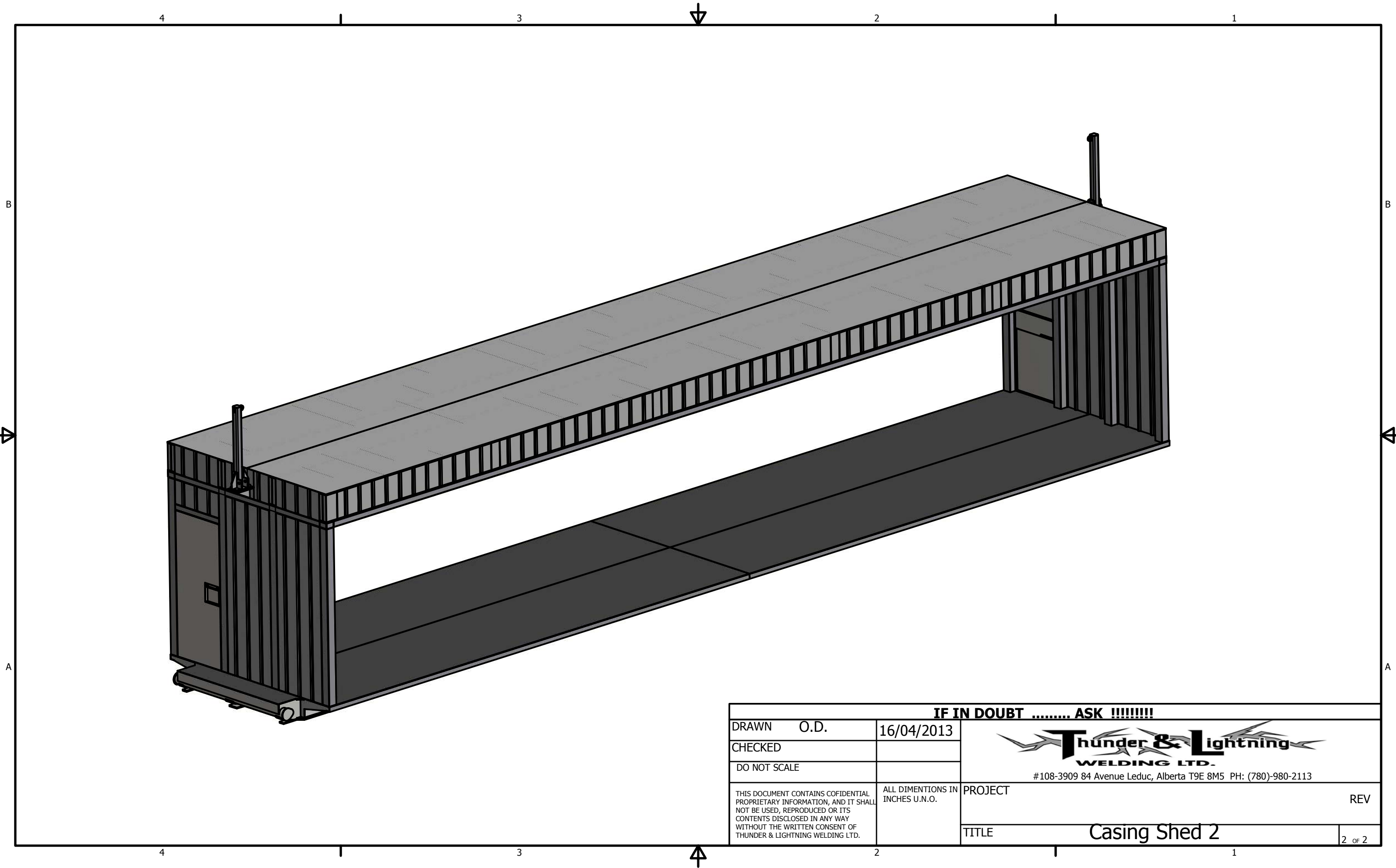
**Mount Vernon, WA; 05/23/2013**


**HWY13MH012**

(3 pages)



<b>IF IN DOUBT ..... ASK !!!!!!!</b>				
DRAWN	O.D.	16/04/2013	 #108-3909 84 Avenue Leduc, Alberta T9E 8M5 PH: (780)-980-2113	
CHECKED				
DO NOT SCALE				
THIS DOCUMENT CONTAINS COFIDENTIAL PROPRIETARY INFORMATION, AND IT SHALL NOT BE USED, REPRODUCED OR ITS CONTENTS DISCLOSED IN ANY WAY WITHOUT THE WRITTEN CONSENT OF THUNDER & LIGHTNING WELDING LTD.		ALL DIMINTIONS IN INCHES U.N.O.	PROJECT	REV
			TITLE	Casing Shed 2



<b>IF IN DOUBT ..... ASK !!!!!!!</b>				
DRAWN	O.D.	16/04/2013	 #108-3909 84 Avenue Leduc, Alberta T9E 8M5 PH: (780)-980-2113	
CHECKED				
DO NOT SCALE				
THIS DOCUMENT CONTAINS COFIDENTIAL PROPRIETARY INFORMATION, AND IT SHALL NOT BE USED, REPRODUCED OR ITS CONTENTS DISCLOSED IN ANY WAY WITHOUT THE WRITTEN CONSENT OF THUNDER & LIGHTNING WELDING LTD.		ALL DIMINTIONS IN INCHES U.N.O.	PROJECT	REV
			TITLE	Casing Shed 2