

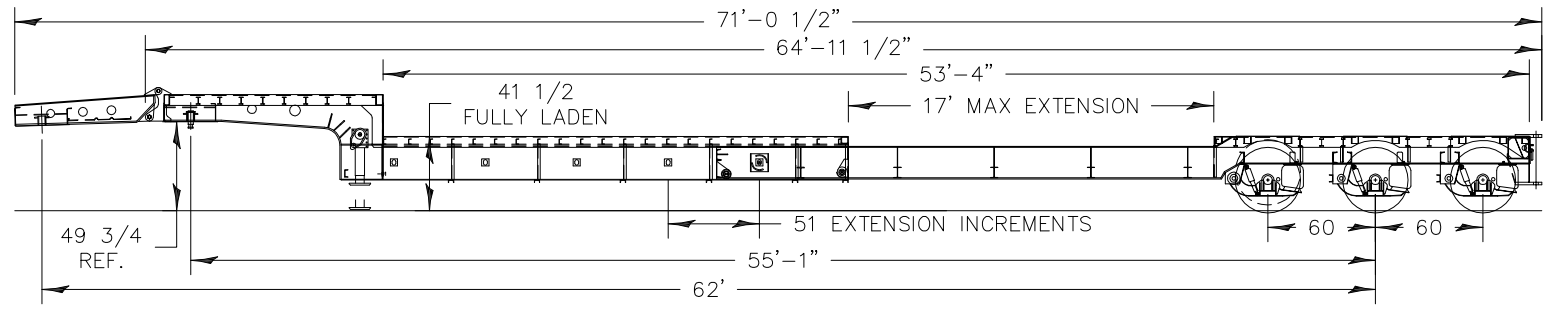
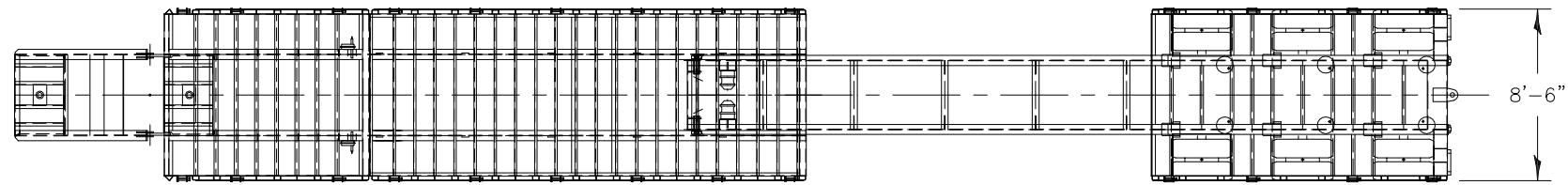
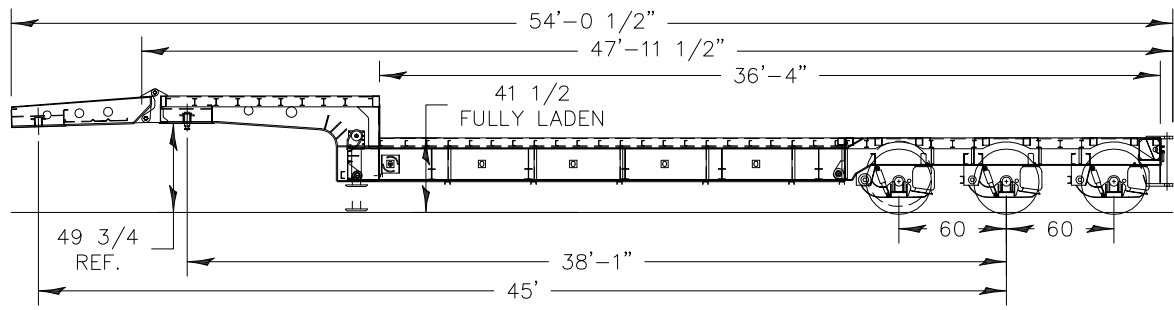
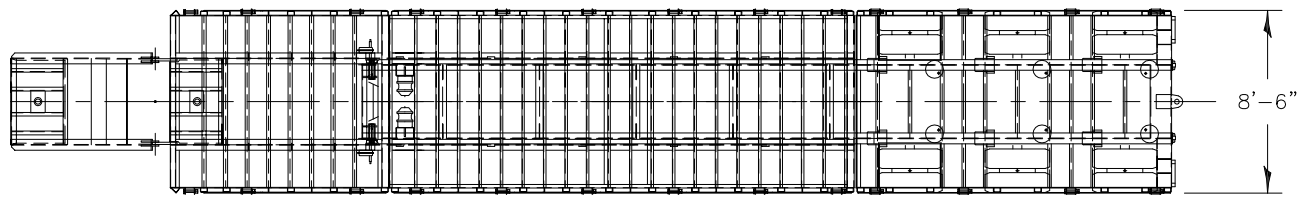


Vehicle Attachment 3 – Aspen Semitrailer Specifications

Mount Vernon, WA; 05/23/2013

HWY13MH012

(2 pages)



THIS DRAWING AND THE OBJECTS REPRESENTED IN IT ARE THE EXCLUSIVE PROPERTY OF ASPEN CUSTOM TRAILERS OR ITS ASSOCIATED ENTITIES. REPRODUCTION, COPYING OR DISTRIBUTION OF THIS DRAWING OR OF THE OBJECTS IS NOT PERMITTED WITHOUT OUR WRITTEN CONSENT. THIS DRAWING MAY NOT BE USED TO CALL FOR TENDERS OR TO QUOTE EXCEPT BY US AND MAY NOT BE MADE AVAILABLE FOR REVIEW BY PARTIES OTHER THAN ASPEN'S INTENDED RECIPIENT.

(C) ASPEN CUSTOM TRAILERS.

ASPEN CUSTOM TRAILERS <small>www.aspen-trailers.com</small>		DATE:	PS-0498-28-MULLEN-48FT-0IN BFT-6IN 17FT-0IN STRETCH
		DRAWN:	PS 29 MAY 2013
REVISED:		SALES DRAWING - SDE40-3	
SCALE:	1:32	DATE:	102255S
REV:		REV:	