

PINE BLUFF SUBDIVISION (0447)

Radio Display: Pine Bluff to Maud 096-096- *18 Maud to Big Sandy 069-069- *38						
Mile Post	Track Layout	Rule 6.3	CP #'s	WEST STATIONS	EAST	Sta. #'s Siding Feet
263.2		YL	CB263	PINE BLUFF YD. (3.2)	BTY	JH404
266.4		YL 2MT ABS		PINE BLUFF SHOPS (1.0)		JH404
267.4		CTC 2MT	A350	S. UPRR CONN (1.4)	X	
268.7			A349	N. UPRR CONN (2.2)	X	
271.0		CTC	CB271	WEST PINE BLUFF (8.9)		JH416
279.9			CB280	RONE (7.9)	!	JH425 7371
281.5			CB282			
287.8			CB288	RISON (9.0)	!	JH434 8963
289.6			CB290			
296.8			CB297	SALINE (10.4)	!	JH442 6763
298.3			CB298			
307.2			CB307	(X)F&P(Z) (0.0)		
308.8			CB309	FORDYCE (5.3)	!	JH452 6980
312.5			CB312	THORNTON (8.9)	!	JH458 8392
314.3			CB314			
321.4			CB321	BEARDEN (6.0)	!	JH466 8350
323.2			CB323			
327.1			CB327	EAGLE MILLS (10.2)	!	JH474 6354
328.5			CB329			
336.7			CB337	CAMDEN (2.2)	!	JH482 9670
338.7			CB339			
338.9				EL DORADO JCT. (10.2)		
349.1			CB349	BUENA VISTA (7.7)	!	JH494 7328
350.6			CB351			
356.8			CB357	STEPHENS (10.0)	!	JH503 10159
358.9			CB359			
366.8			CB367	McNEIL (9.2)	T!	JH513 11197
369.1			CB369			
376.0			CB376	LUMBER (8.6)	!	JH527 9084
377.9			CB378			
384.6			CB385	STAMPS (4.5)	!	JH530 8593
386.4			CB387			
387.7			CB388	LEWISVILLE (14.1)	!	JH534 11820
390.3			CB390			
401.8			CB402	McKINNEY (12.6)	!	JC548 8977
403.4			CB404			
414.4			CB414	EAST TEXARKANA (2.0)		
416.4			CB416	GERTRUDE (2.3)		
417.5				TEXARKANA YARD (0.4)	BY	TP000 14100
419.1			CB418	(X)UPRR(Z) (0.1)		
419.1						
419.2			CB419	(X)KCS(Z) (3.8)		
423.0			CB423	EYLAU (12.9)	!	JC568 8500
424.9			CB425			
435.9			CB436	MAUD (15.3)	!	JC582 8056
437.6			CB438			
451.2			CB451	DARDEN (12.9)	!	JC596 7927
452.8			CB453			
464.1			CB464	OMAHA (14.2)	!	JC610 9036
466.0			CB466			
478.3			CB478	MT PLEASANT (1.9)	JC624	Yard
479.8			CB480			
480.2			CB481	DALLAS JCT. (9.3)		
489.5			CB489	EAST PITTSBURG (1.5)	!	JC634 6709
490.9			CB491			
491.0				(X)KCS(A) (9.6)		

500.6		CTC	CB500	SMITH (11.8)	!	JC646	8492
502.0		CB502					
512.2		CB512	SUFFOLK (12.8)	!	JC657	6574	
513.6		CB514					
525.0		CB925	(X)UPRR(Z) (0.1)				
525.1	CB525	BIG SANDY	!	TP113	8077		

(261.9)

SI-01 MAIN TRACK AUTHORITY

CTC Between: CP A350 and CP CB525.

Yard Limits Between: MP 263.2 and MP 267.4;
(includes 2MT between MP 265.7 and MP 267.4).

ABS Between: MP 266.4 and MP 267.4.

SI-02 MAXIMUM SPEED TABLE

Maximum Speed	MPH
Between Mileposts	
263.2 and 419.7	
(Except as Below)	70
263.2 and 265.7	20
265.7 and 267.4 No.1 & No.2	20
267.4 and 269.0 No.1	30
269.0 and 271.0 No.1	40
267.4 and 269.0 No.2	30
281.5 **W	60+
286.4 and 287.4	40
289.5 **W	50+
287.4 and 291.7	60
291.7 and 292.0	50
292.0 and 294.6	55
294.6 and 295.5	50
296.8 **E	55+
299.4 and 299.9	40
299.9 and 302.4	50
306.6 and 307.0	40
307.0 and 307.3	25
307.3 and 311.5	45
311.5 and 312.2	50
314.8 and 316.8	55
316.8 and 317.6	45
324.3 and 325.8	55
330.0 and 330.2	60
334.6 and 336.6	45
336.6 and 338.0	20
338.0 and 339.9	30
339.9 and 344.4	45
344.4 and 348.9	40
348.9 and 359.0	45
359.0 and 366.0	50
366.0 and 369.8	45
369.8 and 379.8	65
386.7 and 390.4	60
397.3 and 405.2	60
396.6 and 397.0	45
397.0 and 397.3	30
405.2 and 406.9	50
406.9 and 407.8	40
407.8 and 410.6	50
410.6 and 410.9	45
410.9 and 416.4	50
416.4 and 419.1	35
419.1 and 419.7	20+

PINE BLUFF SUBDIVISION (0447)

Between Mileposts	
419.7 and 525.1	
(Except as Below).....	60
419.7 and 420.0.....	35
430.2 and 432.5.....	50
452.7 **W.....	55+
456.5 and 461.0.....	50
461.0 and 461.3.....	45
461.3 and 465.9.....	50
465.9 and 466.2.....	45
472.2 and 476.8.....	50
476.8 and 480.8.....	35
480.8 and 482.1.....	45
482.1 and 482.7.....	55
488.1 and 489.3.....	50
489.3 and 490.9.....	55
490.9 and 491.7.....	35
491.7 and 496.0.....	50
496.0 and 496.3.....	45
501.5 and 505.0.....	50
507.6 and 509.3.....	45
509.3 and 510.8.....	35
510.8 and 511.7.....	45
511.7 and 514.2.....	50
521.7 and 524.0.....	50
524.0 and 525.1.....	40

** Only freight trains exceeding 80 TPOB must comply with speed restriction. Speed restriction will not apply when signal at speed restriction location displays CLEAR.

SI-03 OTHER SPEED RESTRICTIONS	
Maximum Speed	MPH
1. Thru Sidings & Turnouts	
Big Sandy - connecting to Mineola Sub..	15
Texarkana Siding:	
416.4 and 417.8.....	20
417.8 and 419.3.....	10
2. Dual Control Switch Turnouts	
CP CB271.....	40
3. Misc. Speed Restrictions	
At Big Sandy on connecting track to Mineola Sub.....	30
Connecting track between Yard 8 Track 110 McGehee Sub and Yard 10 Track 348 Pine Bluff Sub.....	10
F & P Railroad.....	10
Connection at Texarkana to No.2 MT on Little Rock Sub.....	10

SI-04 MAIN TRACK DESIGNATIONS
Two Main tracks between MP 265.7 and MP 271.0.

SI-05 MILEPOST EQUATIONS
 MP 267.4 = MP 349.5 on McGehee Sub.
 MP 268.7 = MP 348.6 on White Bluff Sub.

SI-06 RCL OPERATIONS

Designated Remote Control Areas:
 Pine Bluff Yard Main Track between:
 CP CB261(Jonesboro Sub) to CP A350;
 CP A350 to MP 356.0(McGehee Sub)
 including Pine Bluff West Siding.
 All yard and industry tracks within these limits.

Designated Remote Control Zones:
 East and West Hump Leads are designated as a Remote Control Zone.
 The Remote Control Zone (RCZ) includes both pull back hump leads from the crest on the west end to the clearance point on east end.

SI-07 ITEM 13 TRAIN DEFECT DETECTORS		
(#) 276.6	(#) 362.9	% 462.1
% 285.7	% 371.4	(#) 472.2
(#) 290.9	(#) 381.1	% 475.9
% 300.2	(#)& 395.0	(#) 483.4
(#) 304.2	& 399.6	% 494.1
% 310.5	(#) 408.8	% 498.2
(#) 315.2	% 412.2	(#) 505.5
% 325.0	(#) 421.2	(#) 519.0
(#) 332.1	% 427.5	& 520.7
& 334.3	(#) 431.8	
& 338.8	(#) 443.1	
(#) 344.3	% 447.6	
% 352.3	(#) 457.8	

PINE BLUFF SUBDIVISION (0447)

SI-08 RULES ITEMS

Rule 6.28: Tracks serving Red River Arsenal and Lone Star Depot are protected by a gate located about one mile east of UPRR main track and equipped with a private lock. Movement through this gate is made by calling guard house at 334-2911, from Texarkana. Movements within Red River Arsenal area between 0800 and 1700 are made only upon the authority of Arsenal yardmaster who can be contacted inside the Arsenal area on Arsenal phone number 2319.

Rule 8.12 Crossover Switches: Exception - No Normal Position for crossover switches at MP 266.2 Compress Crossover. These crossovers may be left lined and locked as last used but must be left either for crossover movement or for straight through movement.

Rule 8.19.1 - Radio Controlled Switches:
Designated Radio Channel 022-022

Location	MP	Normal	Reverse
Pine Bluff Yard	265.3	#2653866 or #2652166	#2653877

Rule 9.2.4: On Pine Bluff Subdivision the indication of signal Rule 9.2.4 as shown in System Special Instructions is revised to read:

"PROCEED PREPARED TO STOP AT SECOND SIGNAL AND BE PREPARED TO ADVANCE ON DIVERGING ROUTE AT NEXT SIGNAL AT PRESCRIBED SPEED THROUGH TURNOUT UNLESS THE NEXT SIGNAL DISPLAYS AN ASPECT MORE FAVORABLE THAN DIVERGING APPROACH OR APPROACH."

Pine Bluff Terminal: ITEM 4A, System Special Instructions (page 13)- Exception: last paragraph revised to read:
Do not move or switch more than eight locomotives within locomotive servicing facilities. However, within Pine Bluff Terminal area, not more than twelve locomotives may be moved between the locomotive servicing facility and the train yards when authorized by a local manager.

Rule 71.2.3: Exception: Pine Bluff Yard only, employees, other than the RCL Operator, may ride a car through Master or Group Retarders when necessary to shove tracks. Retarders must be turned off and employee must wear proper eye protection and hearing protection (ear plugs).

SI-09 FRA EXCEPTED TRACKS

Pine Bluff:
Cleaning tracks 584, 585;
Old Yard track 594;
Old back shop tracks 553 thru 567 and tracks 569,570,571,822,843;
PB Sand & Gravel tracks 794,795,797,798;
Class Yard & Belt Lead tracks 117,103 and tracks 001 thru 006;
Port tracks 700,743,710
Rip tracks: 580,581,582,583 and 586.
Dock tracks: 520,521,522,523 and 524.
Engine Service tracks: 578,579,501 thru 517.
Yard track 065.

Texarkana: All tracks except Main Track and siding; Track 40 & 42; Kerr McGee Lead.

Maud: Pulpwood track.

Naples: Custom Roofing track.

Mt Pleasant: Yard tracks 1,2,4,5,6,710,711,713.

Pittsburg: Tracks 712, 714, 715.

Gilmer: Track 713.

SI-10 BUSINESS TRACKS

Track Name	MP	STA. #S
Hixon Lumber Co	267.6	. . .
Millville	326.4	JH472
Herbert	340.5	JH485
Spirit Lake	394.4	JC539
Redwater E.....	431.0	JC576
Naples W.....	460.7	JC603
Mt. Pleasant W.....	479.5	JC624
Pittsburg W.....	491.7	JC636

SI-11 INDUSTRIAL LEADS

Commerce Industrial Lead:(0592)
Off Main Track at MP 480.2 Dallas Jct.
MP 480.2 to MP 481.5, 1.3 Miles.
Rule 6.32.2
All Trains Comply with Rule 6.32.2, Procedure 1 at and between the following crossing(s):
MP 480.26 (MLK St) and End of Track MP 489.4. (Due to rusty rail conditions).
Stop Signs are located on main track in advance of the crossing at MP 488.8 (Spur 185).
Train or engine may pass Stop sign after a crew member is positioned on the ground at the crossing to provide warning.
Maximum Gross Weight: 134 tons.

Dowco Industrial Lead:(0448)
Off Main Track at MP 373.3.
Extends 6.45 miles from MP 0.0 to MP 6.45.
MP 0.0 to 0.5.....10 mph
MP 0.5 to 6.45.....20 mph
Comply with Rule 6.32.2, Procedure 1, at all crossings at and between
MP 0.10 (Highway 98) and MP 5.20 (Highway 344) due to rusty rail conditions.
Maximum Gross Weight: 134 tons.

SI-12 TONNAGE RESTRICTIONS/TPOB

Maximum gross weight: 158 tons

Freight Trains Exceeding:
120 TPOB must not exceed 60 MPH,
132 TPOB must not exceed 45 MPH

SI-13 TRAIN MAKE-UP RESTRICTIONS - None.

SI-14 MISC. INSTRUCTIONS

Pine Bluff Terminal: All trains operating within Pine Bluff terminal must contact the Yardmaster via Radio Display-022-022.

Track Breach Protection:

Employee Established Track Breach Protection may be active:

Location: Pine Bluff Yard Limits

Between MP 263.2 and MP 267.4

Designated Radio Channel: 022-022

Trains departing Pine Bluff Yard: A member of the crew must communicate with the yardmaster for route and authority to depart. Conductors and/or engineers on eastbound trains arriving Pine Bluff Yard will contact Pine Bluff Tower for yarding instructions when crossing Missouri Street.

Trains departing Texarkana Yard: A member of the crew must communicate with train dispatcher for authority to depart.

Six Axle Locomotives: Not to be operated on tracks listed below:

Pine Bluff - All tracks local yard except southend of track No. 053;

all tracks off Port lead;

Planters Cotton Seed;

all old Rip and Shop Tracks;

all tracks Belt Lead and Class Yard;

Hixon Lumber tracks 817, 818, 843, 571, 570,

Old yard track 293, 594 and Pine Bluff Sand & Gravel tracks.

Texarkana - Kerr-McGee, and Hostler Track.

Lone Star Lead at Redwater.

Mt. Pleasant Yard - Tracks 4 & 5, and scale track.

Gilmer - Dean Lumber Track.

Texarkana: CP CB418 - Interlocking Time Release Instructions at Texarkana are located on the signal mast, not in the interlocking limits.

(Z) Interlocking Locations:

(X)F&P(Z) at MP 307.2 (CP CB307)

(X)UPRR(Z) at MP 419.1 (CP R001)

(X)UPRR(Z) at MP 525.0 (CP CB925)

(X)KCS(Z) at MP 419.2 (CP CB419)

Symbol (Z) Interlocking Instructions:

Rule 9.9.1 (Passing Approach to Automatic Interlocking) applies.

At a signal displaying a Stop indication: Train movements will be governed as follows:

1. A crew member must contact the train dispatcher and obtain permission:
 - * To operate the time release box.
 - and
 - * To pass the Stop indication (train may not proceed until complying with instructions in release box).
2. The crew will then be governed by the instructions in the release box.
3. After complying with instructions in the release box that allow the train to proceed, if signal continues to display a Stop indication, the train must move at restricted speed.

Maintenance of Way movements will be governed as follows:

- * When moving through, comply with Rule 42.7.2.
- * When working within, comply with Chief Engineer Instruction Bulletin 136.4.8.

SI-14 MISC INSTRUCTIONS Continued...

Texarkana: Instructions for eastbound trains on the Pine Bluff Sub entering the Little Rock Sub at Texarkana.

Eastbound train crews on the Pine Bluff Sub transferring to the Little Rock Sub must not block Lake drive crossing (Highway 59) at MP 419.8 until they have contacted Dispatcher 29 on radio channel 027-027 and know that dispatcher is prepared to take your train.

Eastward trains must not pass Eylau without talking to the Little Rock Sub dispatcher to receive permission to enter UPRR main track at Texarkana.

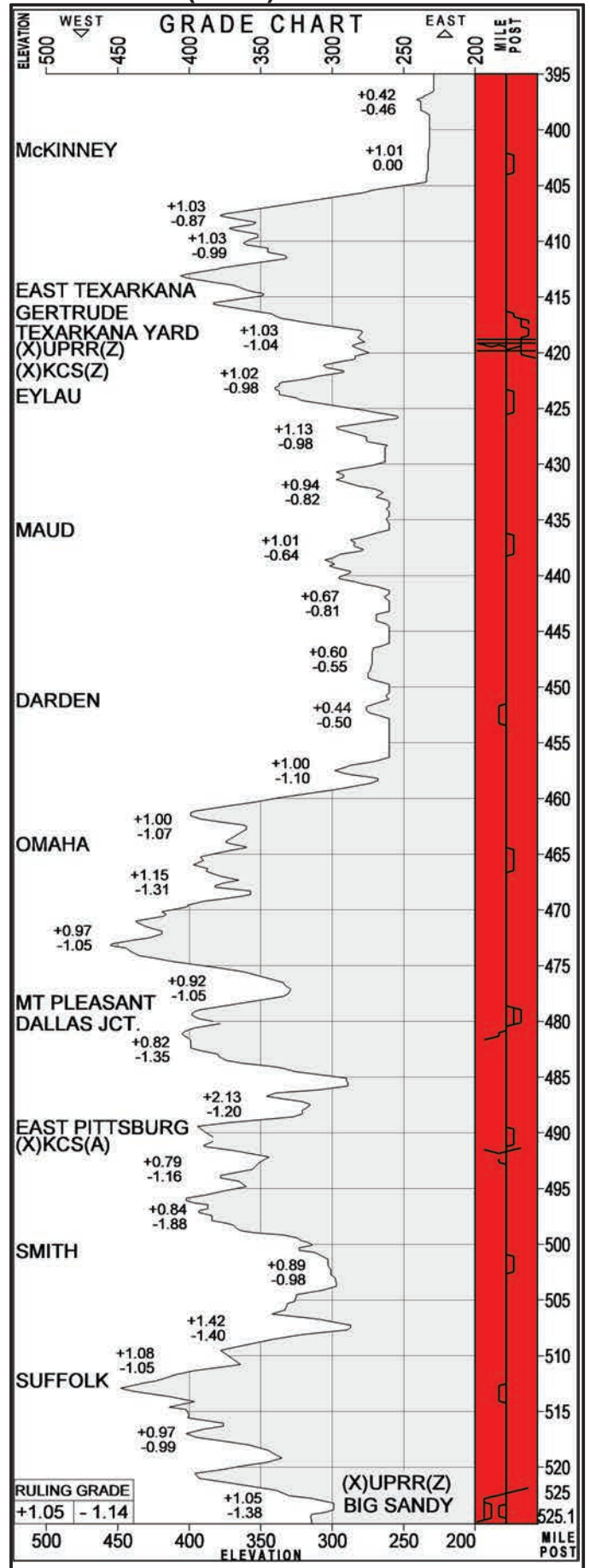
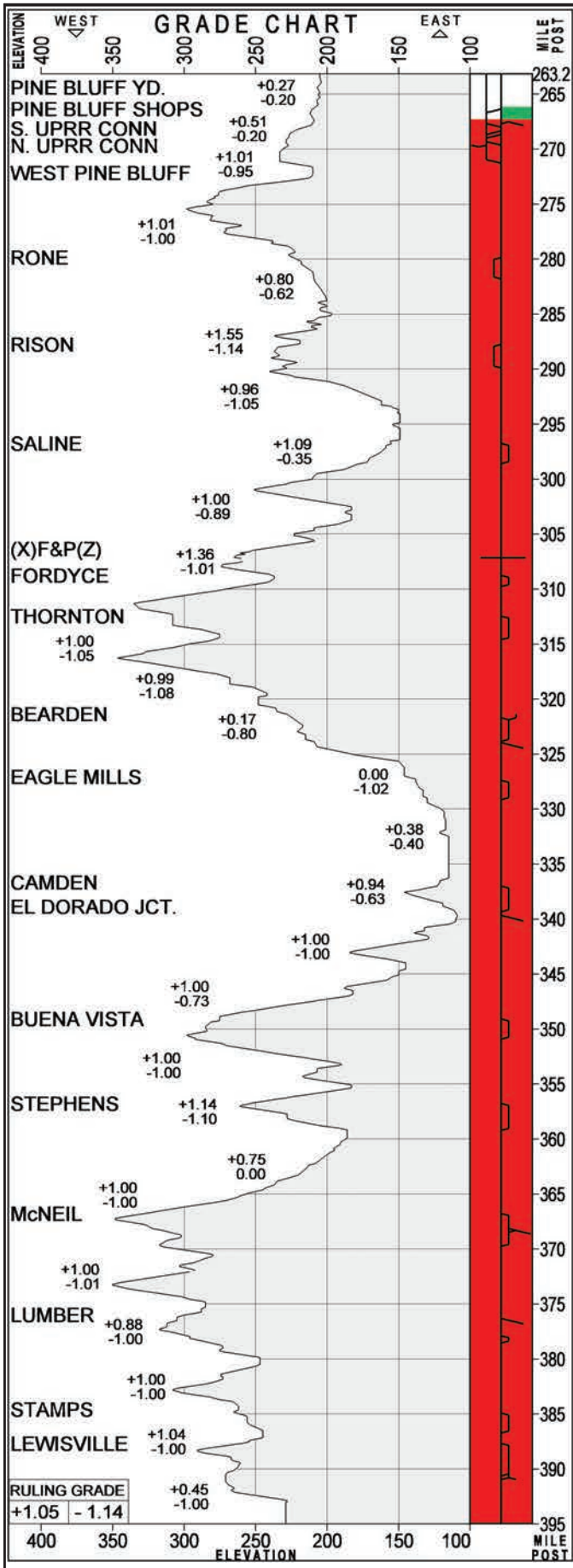
After permission is received, communicate with Texarkana Yardmaster.

Chief Engineer Bulletin 136.4.9 applies:

A Train Approach Warning System (TAWS) has been installed, inspected and is certified for use at the following locations: Stamps

CP CB385-MP384.5 and CP CB387-MP386.4

PINE BLUFF SUBDIVISION (0447)



Pine Bluff Area Map

