

Attachment 5

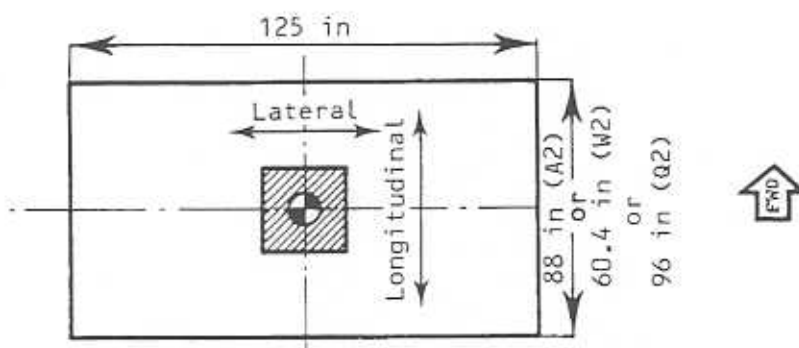
Airbus Weight and Balance Manual, 1.10.05, page 5

A300-600

WEIGHT AND BALANCE MANUAL

(3) Pallets IATA-A2, IATA-Q2 and IATA-W2

Maximum center of gravity height is 36 inches (0.91 meter) from the bottom of the unit load device. The maximum allowable cargo center of gravity deviation from the unit load device geometric center is ± 12.5 inches (0.318 meter) in the lateral direction ; and ± 8.8 inches (0.224 meter) for pallets 88 x 125 inches, ± 9.6 inches (0.244 meter) for pallets 96 x 125 inches and ± 6.04 inches (0.153 meter) for pallets 60.4 x 125 inches in the longitudinal direction.



BASE PLAN VIEW
(NO SCALE)

WC1.1005.005-AA 010

D. Equipment strength

When loaded in forward or aft cargo hold, each ULD as specified in paragraphs 1.10.05.A and 1.10.05.B must be capable of withstanding its maximum gross weight under the NAS 3610 conditions.

Deflection limits shall be in accordance with Specification IATA ULD Technical Manual 50/4.

Each pallet and net must be certified against the requirements of TSO-C90.

To ensure a minimum of good condition, each ULD must also correspond to IATA Specification, section IV 50/0, Part II.

E. Cargo equipment malfunction limitations

The following tables give the identification of latch types and the ULD load restrictions to be applied in case of missing or inoperative equipment.