



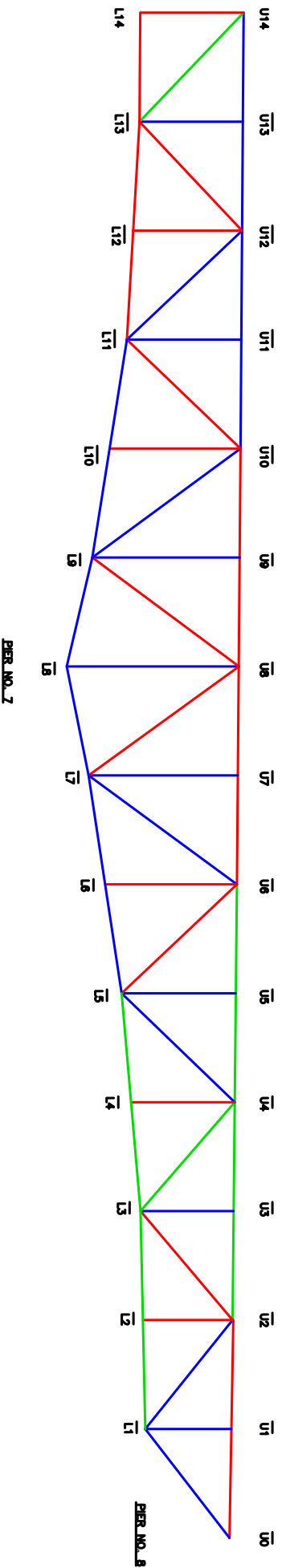
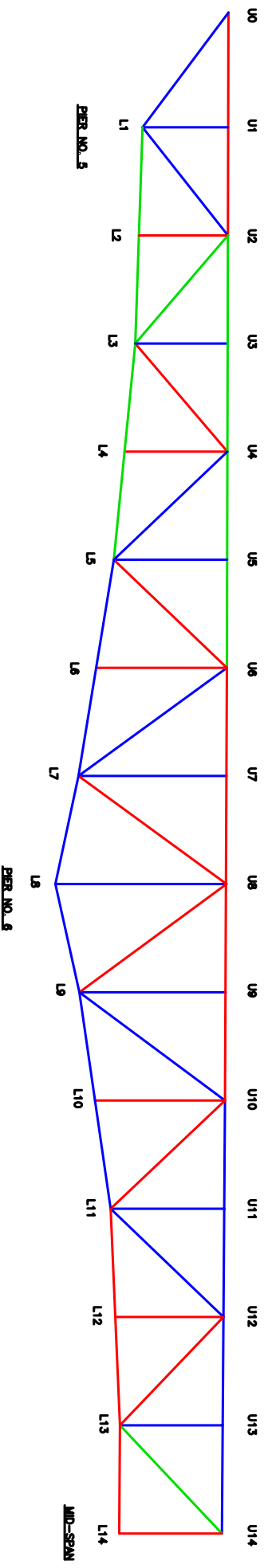
B1	X=405678.714	Y=73806.205
B12	X=405931.771	Y=73916.671
B12	X=405611.119	Y=73810.603
B4	X=405959.675	Y=73920.127

R=405511.052	Y=72977.285
Y=72977.285	X=405511.052

X=405641.211	Y=73817.621
Y=73817.621	X=405641.211

S=405237.4450	Y=73821.111
Y=73821.111	X=405237.4450

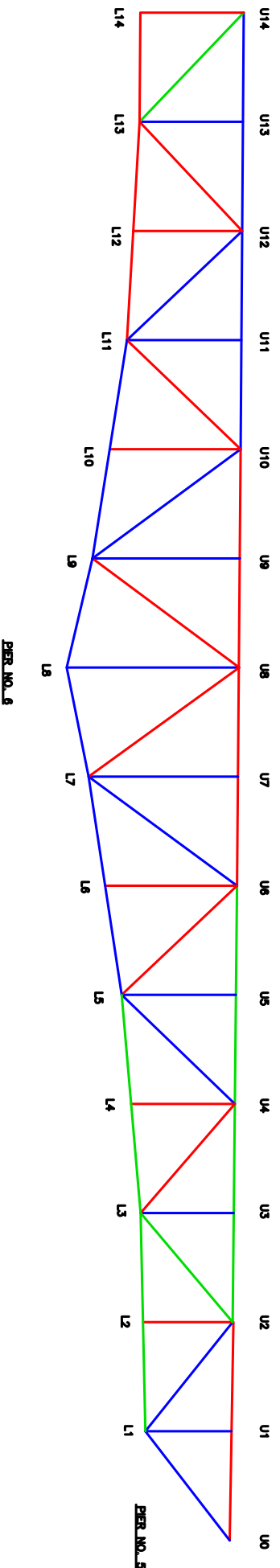
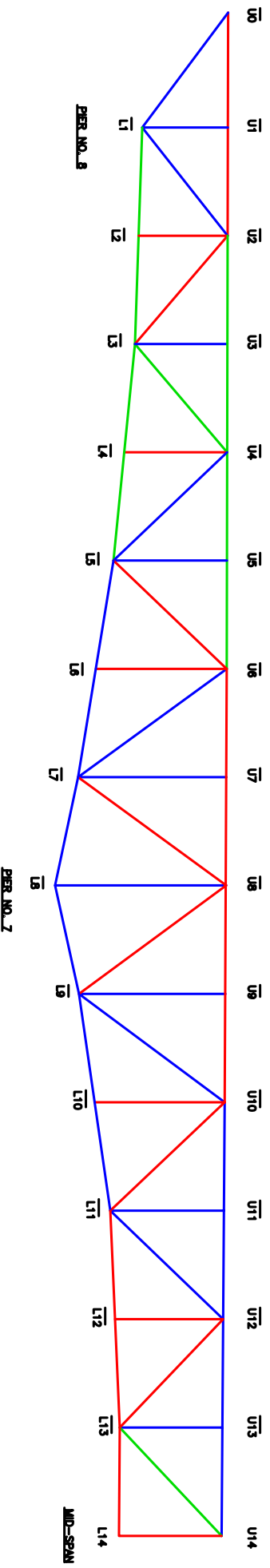
TRUSS DIAGRAM



EAST ELEVATION

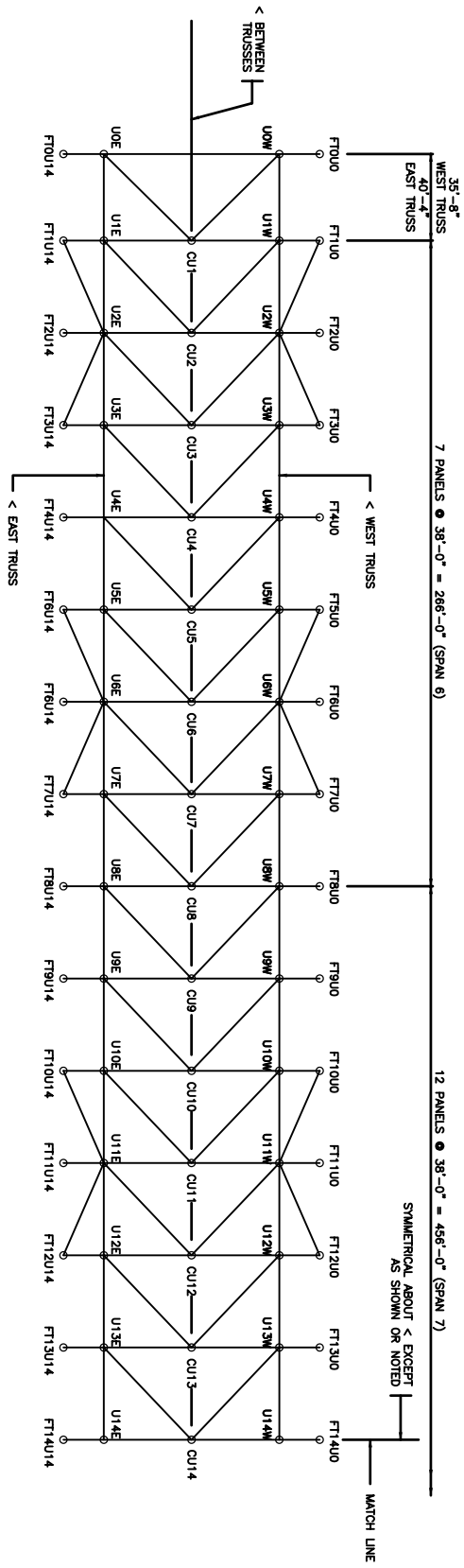
- NOTES:**
- TENSION MEMBERS IN RED
 - COMPRESSION MEMBERS IN BLUE
 - REVERSAL MEMBERS IN GREEN

TRUSS DIAGRAM

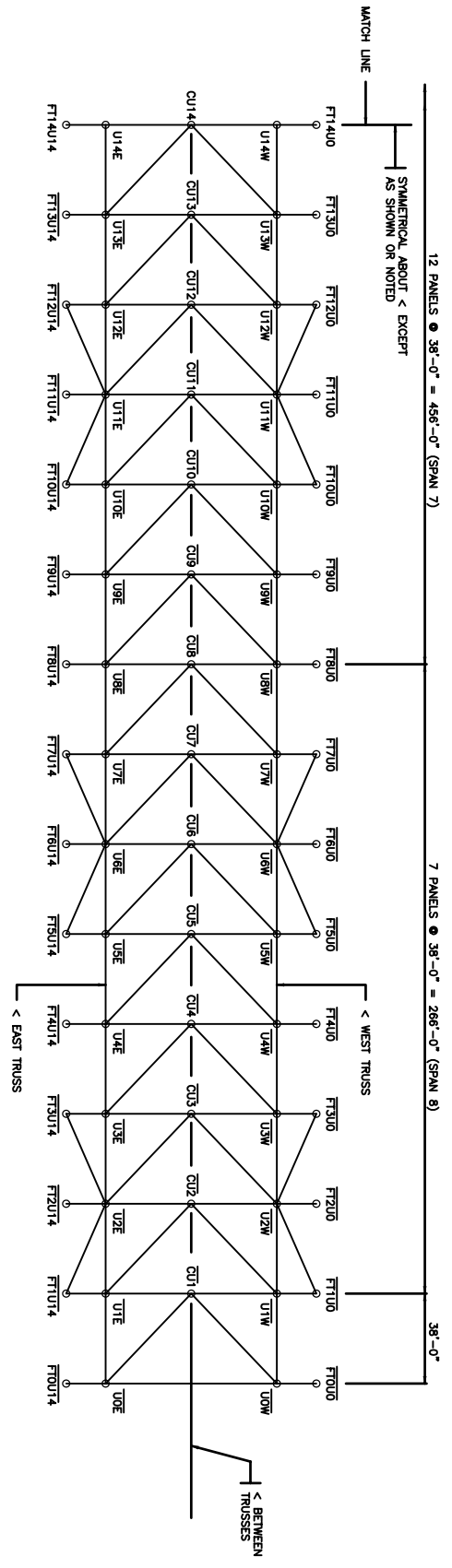


WEST ELEVATION

- NOTES:**
- TENSION MEMBERS IN RED
 - COMPRESSION MEMBERS IN BLUE
 - REVERSAL MEMBERS IN GREEN



PLAN OF UPPER LATERALS



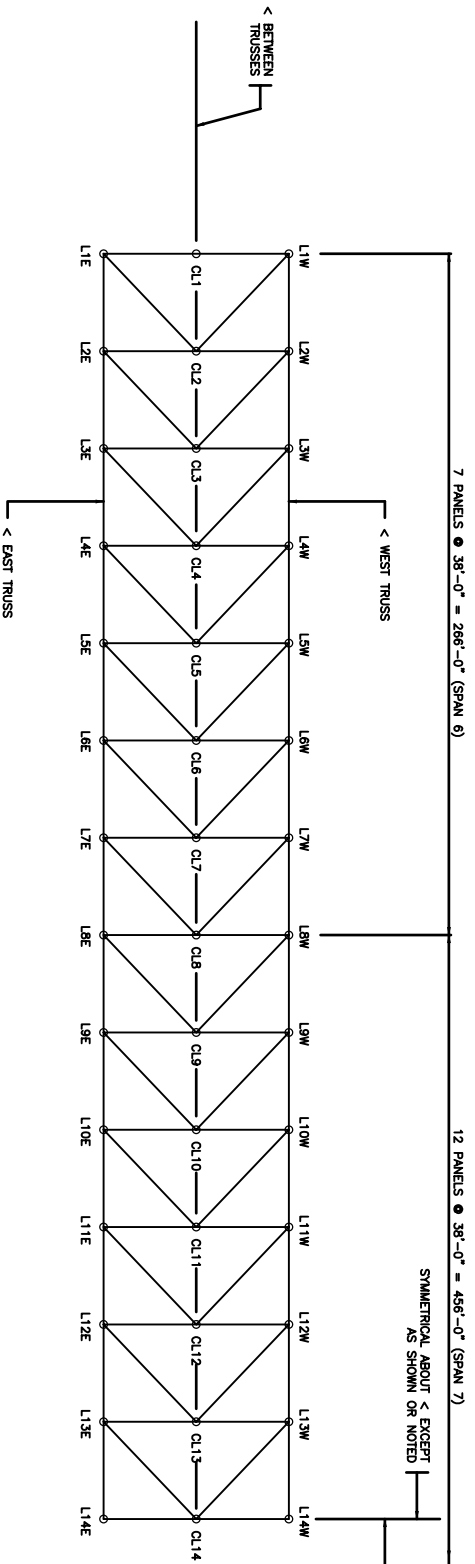
PLAN OF UPPER LATERALS

CERTIFIED BY: _____
 LICENSED PROFESSIONAL ENGINEER
 NAME: _____ L.C. NO. _____

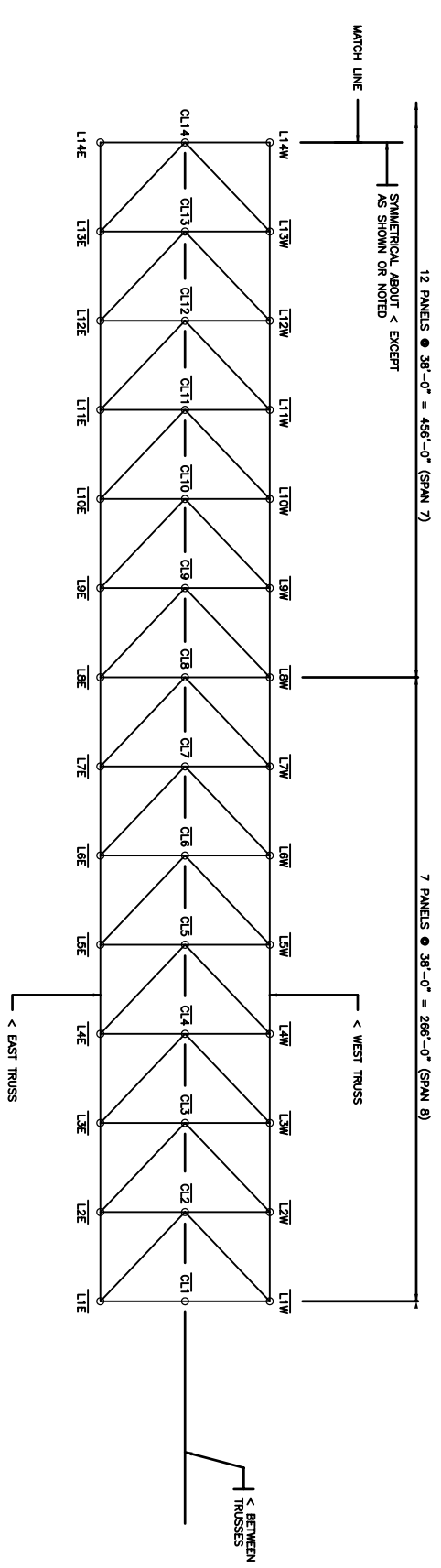
TITLE: **UPPER LATERALS**

DES. _____
 CHK. _____
 SHEET NO. _____ OF _____ SHEETS

DATE: _____ L.A.B. _____
 APPROVED: _____
 BRIDGE NO. 9340



PLAN OF LOWER LATERALS



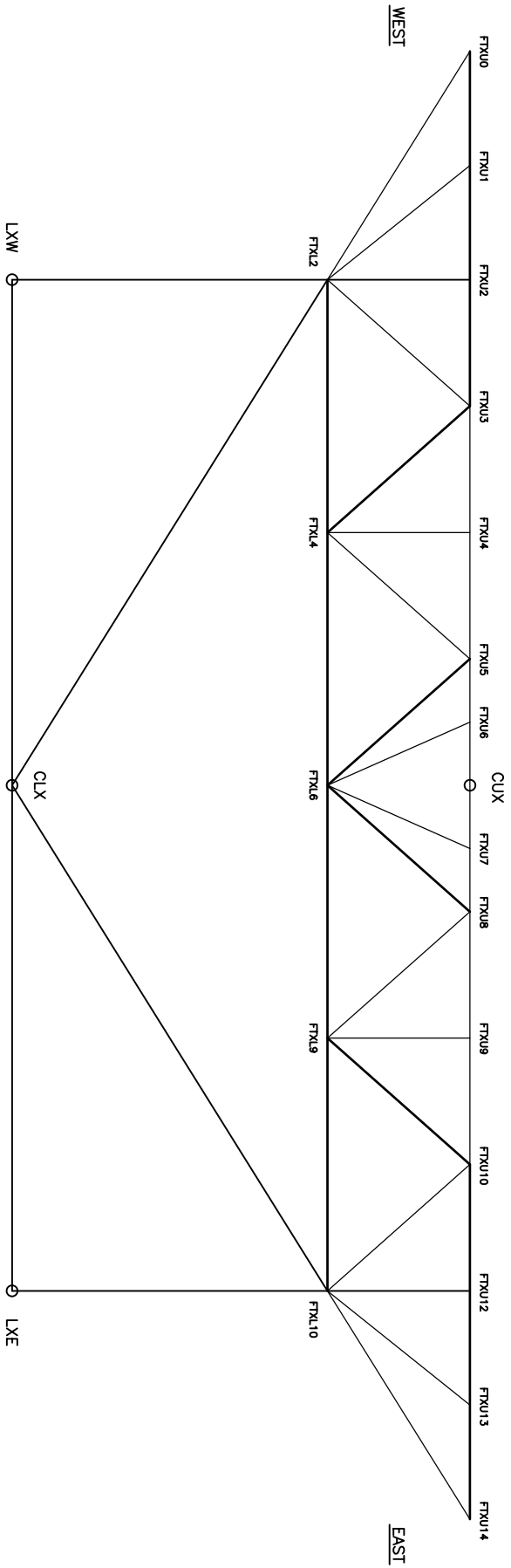
PLAN OF LOWER LATERALS

CERTIFIED BY: _____
 LICENSED PROFESSIONAL ENGINEER
 NAME: _____ LIC. NO. _____

TITLE: **LOWER LATERALS**

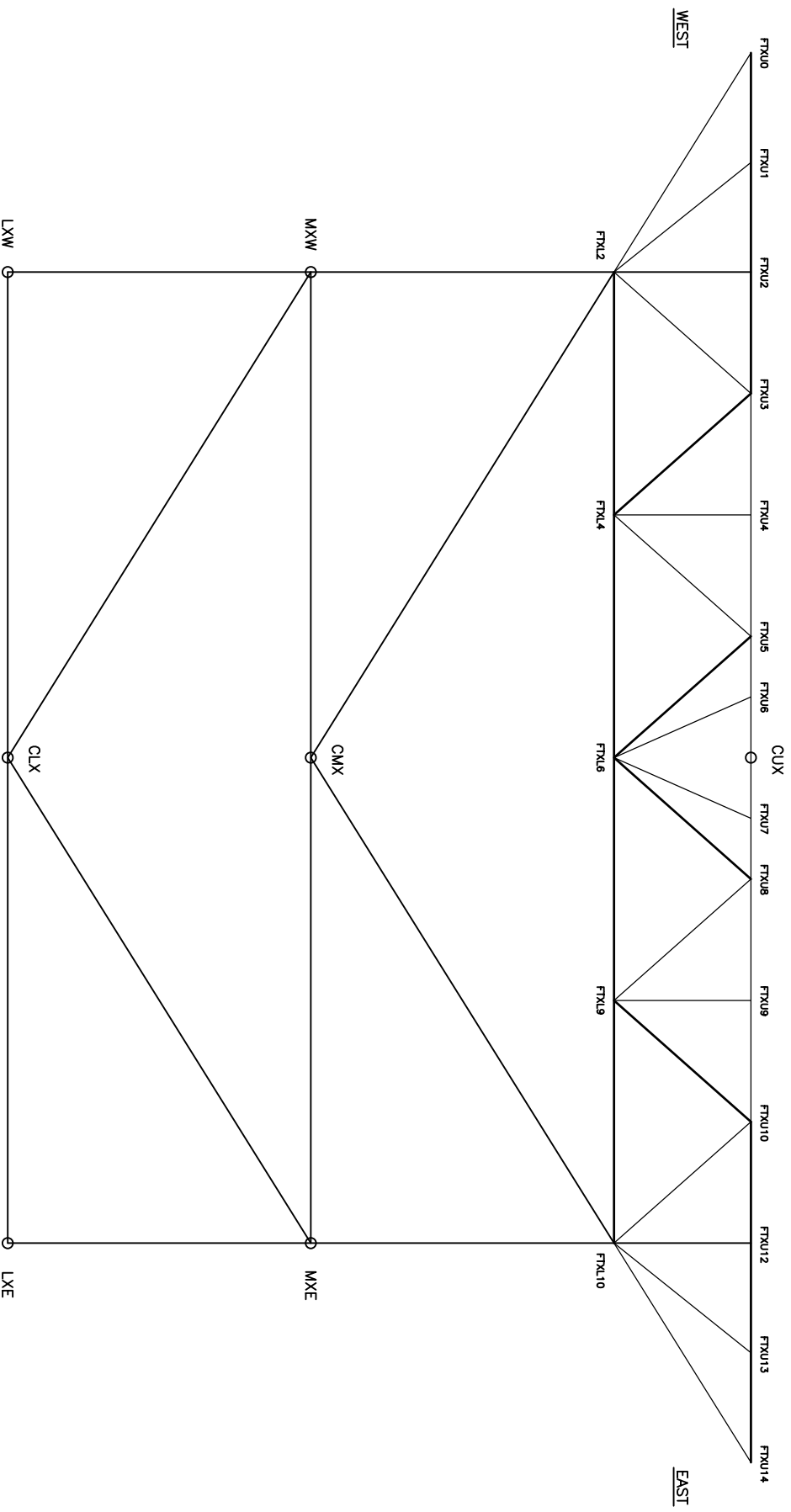
DES. _____
 CHK. _____
 SHEET NO. OF SHEETS

DR. L.A.B. APPROVED: _____
 BRIDGE NO. **9340**



**TYPICAL FLOOR TRUSS AND SWAY FRAME
(FTI-FTB, FTI1-FTT1, FTB-FTT)**

CERTIFIED BY		LICENSED PROFESSIONAL ENGINEER		DATE	
NAME:		LIC. NO.		TITLE:	
DES. CHK.	DRS. CHK.	L.A.B.	APPROVED:	BRIDGE NO. 9340	
SHEET NO. — OF — SHEETS					



TYPICAL FLOOR TRUSS AND SWAY FRAME
(FT8-FT10, FT10-FT8)

CERTIFIED BY	DESIGNED PROFESSIONAL ENGINEER	DATE	TITLE:	DES.	CHK.	DATE	L.A.B.	APPROVED:	BRIDGE NO.
NAME	LIC. NO.								9340
SHEET NO. ___ OF ___ SHEETS									

T = Main Truss, FT = Floor Truss
 S = Stringer, FB = Floor Beam,
 B = Bracing: Sway or Lateral

REMOVAL CHECKSHEET CREW A

Salvage Mark

Member Type	ID	Crew	Pieces Included
Example T	- 999	- A	U8W-U10W; U10W-L10W
S	- 1	- A	S8 @ FT1 TO FT2
S	- 2	- A	S8 @ U0 TO FT1
S	- 3	- A	S14 @ U0 TO FT1
S	- 4	- A	S9 @ FT1 TO FT2
S	- 5	- A	S13 @ U0 TO FT1
S	- 6	- A	S10 @ U0 TO FT1
S	- 7	- A	S11 @ U0 TO FT1
S	- 8	- A	S9 @ U0 TO FT1
S	- 9	- A	S12 @ FT2 TO FT3
S	- 10	- A	S11 @ FT2 TO FT3
S	- 11	- A	S8 @ FT2 TO FT3
S	- 12	- A	S7 @ U0 TO FT1
S	- 13	- A	S10 @ FT3 TO FT4
S	- 14	- A	S9 @ FT2 TO FT3
S	- 15	- A	S12 @ FT3 TO FT4
S	- 16	- A	S10 @ FT2 TO FT3
S	- 17	- A	S13 @ FT3 TO FT4
S	- 18	- A	S11 @ FT1 (SHORT SECTION TO NORTH)
S	- 19	- A	S8 @ FT3 TO FT4
S	- 20	- A	S9 @ FT3 TO FT4
S	- 21	- A	S14 @ FT3 TO FT4
S	- 22	- A	S10 @ FT2 TO FT3
FT	- 23	- A	FT1U0-U2, FT1U0-L2, FT1U1-L2
FT	- 24	- A	FT2U0-U2, FT2U0-L2, FT2U1-L2
T	- 25	- A	U0W-U1W
T	- 26	- A	U0W-L1W
T	- 27	- A	U2W-U1W + U1W NODE + U1W-L1W + FT1U2 + U1W-CU2
T	- 28	- A	U2W-L1W
T	- 29	- A	L1W-L2W
T	- 30	- A	L1W NODE + U2W-L1W + L1W-L2W + L1W-U1W + L1W-CL1 + L1W-CL2
T	- 31	- A	L1W-U1W, 3' LONG
B	- 32	- A	U1W-CU2
FT	- 33	- A	FT2L4 KICKER
FT	- 34	- A	FT1L4 KICKER

T = Main Truss, FT = Floor Truss
 S = Stringer, FB = Floor Beam,
 B = Bracing: Sway or Lateral

REMOVAL CHECKSHEET CREW A

Salvage Mark

Member Type	ID	Crew	Pieces Included
Example T	- 999	- A	U8W-U10W; U10W-L10W
B	- 35	- A	L1W-CL2
B	- 36	- A	FT2U2-CL2
B	- 37	- A	LIW-CL1
FT	- 38	- A	FT1L4-L6
B	- 39	- A	FT1L2-CL1
FT	- 40	- A	FT1L9 KICKER
B	- 41	- A	L1E-CL1
B	- 42	- A	U0W-CU1
FB	- 45	- A	FLOOR BEAM AT U0, WEST END W/ S12-S14
FT	- 46	- A	FT1L6-L9
B	- 47	- A	FT1L10-CL1
T	- 48	- A	U0W
B	- 49	- A	L2W-CL2
B	- 50	- A	L1E-CL2
B	- 51	- A	U1E-CU2
FT	- 52	- A	FT2L9 KICKER
B	- 53	- A	CL2-FT2L10
FB	- 54	- A	FLOOR BEAM AT U0, W/ S8-S11
T	- 55	- A	L1E-U1E
FT	- 56	- A	FT1U14-U13
T	- 57	- A	U1E-U2E
T	- 58	- A	L1E-U2E
T	- 59	- A	L1E-L2E
B	- 60	- A	U0E-CU1
T	- 61	- A	U1E-U0E
FB	- 62	- A	FLOOR BEAM AT U0, W/ S4-S7
S	- 63	- A	S6 @ U0 TO FT1
S	- 64	- A	S5 @ U0 TO FT1
S	- 65	- A	S5 @ FT1 TO FT2
S	- 66	- A	S4 @ U0 TO FT1
S	- 67	- A	S5 @ FT3 TO FT4
S	- 68	- A	S7 @ FT1 TO FT2
FT	- 69	- A	FT2U12-U14
FT	- 70	- A	FT2U14-L10
FT	- 71	- A	FT2L10-U13

T = Main Truss, FT = Floor Truss
 S = Stringer, FB = Floor Beam,
 B = Bracing: Sway or Lateral

REMOVAL CHECKSHEET CREW A

Salvage Mark

Member Type	ID	Crew	Pieces Included
Example T	- 999	- A	U8W-U10W; U10W-L10W
FB	- 73	- A	FLOOR BEAM AT U0, EAST END W/ S1-S3
T	- 74	- A	L1E-U0E
T	- 75	- A	L1E
T	- 76	- A	U0E
FT	- 78	- A	FT1U12-U13
T	- 79	- A	L1W-U0W
S	- 80	- A	S6 @ FT1 TO FT2
S	- 81	- A	S5 @ FT2 TO FT3
S	- 82	- A	S2 @ U0 TO FT1
T	- 83	- A	U2E-L1E
FT	- 86	- A	FT2U8-U10
FT	- 87	- A	FT2L6-L10
B	- 88	- A	CL2-L2E
S	- 89	- A	S7 @ FT2 TO FT3
S	- 90	- A	S1 @ FT1 TO FT2
S	- 91	- A	S3 @ FT1 TO FT2
S	- 92	- A	S4 @ FT1 TO FT2
S	- 93	- A	S4 @ FT3 TO FT4
S	- 94	- A	S2 @ FT3 TO FT4
S	- 95	- A	S7 @ FT3 TO FT4
S	- 96	- A	S4 @ FT3 TO FT4
S	- 97	- A	S1 @ FT2 TO FT3
S	- 98	- A	S6 @ FT2 TO FT3
S	- 99	- A	S3 @ FT2 TO FT3
B	- 100	- A	U2E-CU3
B	- 101	- A	L2E-CL3
B	- 102	- A	L2E-CL3
FT	- 103	- A	FT2U3-U5
FT	- 104	- A	FT2L2-L6
B	- 105	- A	L2W-CL3
B	- 106	- A	U2W-CU3
T	- 107	- A	U2W
T	- 108	- A	U2W-L2W
T	- 109	- A	U2E
S	- 110	- A	S2 @ FT2 TO FT3

T = Main Truss, FT = Floor Truss
 S = Stringer, FB = Floor Beam,
 B = Bracing: Sway or Lateral

REMOVAL CHECKSHEET CREW A

Salvage Mark

Member Type	ID	Crew	Pieces Included
Example T	- 999	- A	U8W-U10W; U10W-L10W
S	- 111	- A	S3 @ FT3 TO FT4
S	- 112	- A	S2 @ FT1 TO FT2
S	- 113	- A	S6 @ FT3 TO FT4
S	- 114	- A	S1 @ U0 TO FT1
S	- 115	- A	S3 @ U0 TO FT1
S	- 116	- A	S1 @ FT3 TO FT4
T	- 117	- A	U2W-U3W
T	- 118	- A	U2W-L3W
T	- 119	- A	U2E-U3E, 30' LONG
B	- 120	- A	CL2-FT2L10, 4' LONG
FT	- 121	- A	FT3U13-U14
FT	- 122	- A	FT3U0-U2
T	- 123	- A	L2W-L3W, L2W
T	- 124	- A	U2E-L3E
T	- 125	- A	U2E-L2E
FT	- 126	- A	FT3L9 KICKER
B	- 127	- A	GUSSET NEAR L2W
FT	- 128	- A	FT3U2-U6
FT	- 129	- A	FT3U8-U10
T	- 130	- A	L2E-L3E, L2E, PART OF L1E-L2E
FT	- 131	- A	FT2U5-L6
FT	- 132	- A	FT2U6-L6
FT	- 133	- A	FT2L4
FT	- 134	- A	FT2L2-U3
B	- 135	- A	CL3-FT3L2, SEGMENT
B	- 136	- A	L3E-CL3, SEGMENT
FT	- 137	- A	FT3L4-L6
FT	- 138	- A	FT3U6-L6, FT3U5-L6
B	- 139	- A	CL3-FT3L2, SEGMENT
FT	- 140	- A	FT3L9
FT	- 141	- A	PORTION OF FT3L6, FT3U8-L6, FT3U7-L6
FT	- 142	- A	FT3U1-L2
FT	- 143	- A	FT3L4 KICKER
B	- 144	- A	FT3L10-CL3
B	- 145	- A	CL3-L3W

T = Main Truss, FT = Floor Truss
 S = Stringer, FB = Floor Beam,
 B = Bracing: Sway or Lateral

REMOVAL CHECKSHEET CREW A

Salvage Mark

Member Type	ID	Crew	Pieces Included
Example T	- 999	- A	U8W-U10W; U10W-L10W
FT	- 146	- A	FT3L6-L9
FT	- 147	- A	FT1U7-U10
FT	- 148	- A	FT2L9
FT	- 149	- A	FT2U10-L10
FT	- 150	- A	FT2U8-L6
FT	- 151	- A	FT2U7-L6
FT	- 152	- A	FT3U0-L2, PART OF S14 STRINGER
FT	- 153	- A	FT3U12-U13
FT	- 154	- A	FT1U10-L10
T	- 155	- A	U3E
T	- 156	- A	U3E-L3E
FT	- 157	- A	FT1U3-U6
T	- 158	- A	U3E-U4E
T	- 159	- A	L3E-U2E
FT	- 160	- A	FT4U12-U14
B	- 161	- A	U3W-CU4
B	- 162	- A	U3E-CU4
FT	- 163	- A	FT4L9 KICKER
T	- 164	- A	U4E-L3E
T	- 165	- A	U3W
T	- 166	- A	U3W-L3W
B	- 167	- A	CL4-L3E
T	- 168	- A	U3W-L3W, FT3L2
T	- 169	- A	L2W-L3W, L3W
T	- 170	- A	U2W-L3W
T	- 171	- A	L3E-L4E
T	- 172	- A	U3W-U4W
FT	- 173	- A	FT4L4 KICKER
B	- 174	- A	CL4-L3W
FT	- 175	- A	FT4U13-L10
FT	- 176	- A	FT4U14-L10
FT	- 177	- A	FT4U8-U12
FT	- 178	- A	FT4L9
T	- 179	- A	U4W-L3W
T	- 180	- A	U3W-L3W, PART OF L3W

T = Main Truss, FT = Floor Truss
 S = Stringer, FB = Floor Beam,
 B = Bracing: Sway or Lateral

REMOVAL CHECKSHEET CREW A

Salvage Mark

Member Type	ID	Crew	Pieces Included
Example T	- 999	- A	U8W-U10W; U10W-L10W
T	- 181	- A	PART OF FT FOUND NEAR L3
T	- 182	- A	L3W-L4W, L3W
FT	- 183	- A	FT4L4-L6
FT	- 184	- A	FT4U3-U7
FT	- 185	- A	FT4U3-L2
	- 186	- A	
B	- 188	- A	L3E-CL4
S	- 189	- A	S3 @ FT4
S	- 190	- A	S3 @ FT5
S	- 191	- A	S3 @ FT5 TO FT6
S	- 192	- A	S3 @ FT6
S	- 193	- A	S1 @ FT4 TO FT5
S	- 194	- A	S1 @ FT4 TO FT5
S	- 195	- A	S1 @ FT5
FT	- 196	- A	FT6U12-U14
S	- 197	- A	S2 @ FT6
S	- 198	- A	S2 @ FT5 TO FT6
S	- 199	- A	S2 @ FT5
S	- 200	- A	S2 @ FT4 TO FT5
S	- 201	- A	S1 @ FT6 TO FT7
S	- 202	- A	S2 @ FT4 TO FT5
FT	- 203	- A	FT5U13-U14, FT5U14-L10
S	- 204	- A	S1 @ FT5 TO FT6
S	- 205	- A	S4 @ FT4 TO FT4.5 (~22' LONG)
S	- 206	- A	S5 @ FT4 TO FT4.5 (~22' LONG)
S	- 207	- A	S6 @ FT4 TO FT4.5
S	- 208	- A	S7 @ FT4 TO FT4.5
B	- 209	- A	U4E-CU5
B	- 210	- A	CL4-FT4L10
T	- 211	- A	L4E-U4E
B	- 212	- A	CL4-L4E
S	- 213	- A	S7 @ FT4 TO FT5
S	- 214	- A	S6 @ FT6 TO FT7
S	- 215	- A	S4 @ FT4 TO FT5
FT	- 216	- A	FT5L9

T = Main Truss, FT = Floor Truss
 S = Stringer, FB = Floor Beam,
 B = Bracing: Sway or Lateral

REMOVAL CHECKSHEET CREW A

Salvage Mark

	Member Type	ID	Crew	Pieces Included
Example	T	999	A	U8W-U10W; U10W-L10W
	FT	217	A	FT5U8-U13
	T	218	A	U4E, FT4L10, FT4L10-U10
	T	219	A	U4E-U5E
	T	220	A	L3E-L5E, 45' LONG
	T	221	A	U4E-L5E
	T	222	A	U5E-L5E W/ FT5L10
	B	223	A	L4E-CL5, CL5
	T	224	A	U5E-U6E (~37' LONG)
	B	225	A	U5E-CU6
	B	226	A	U5E-CU6
	T	227	A	U4E-L5E, L5E
	S	228	A	S4 @ FT5 TO FT6
	S	229	A	S4 @ FT5 TO FT6
	S	230	A	S5 @ FT5 TO FT6
	S	231	A	S5 @ FT5 TO FT6
	S	232	A	S7 @ FT5 TO FT6
	S	233	A	S6 @ FT5 TO FT6
	T	234	A	L5E-U6E
	B	235	A	CL5-L5E
	B	236	A	CL6-L5E
	T	237	A	L5E-L6E
	B	238	A	CL5-FT5L10
	B	239	A	UNKNOWN BRACE MEMBER
	FT	240	A	FT?U13-U14
	FT	241	A	FT5U13-L10
	FT	242	A	FT6U8-U12, FT6U9-L9, FT6U8-L6
	FT	243	A	FT6L6-L10, FT6L9-U10
	FT	244	A	FT6U8-L9
	T	245	A	U6E-L7E
	B	246	A	CU8-U7E
	FT	247	A	FT6U10-L10
	B	248	A	U6E-CU7
	T	249	A	U6E
	S	250	A	S3 @ FT6 TO FT7
	S	251	A	S3 @ FT7 TO FT8

T = Main Truss, FT = Floor Truss
 S = Stringer, FB = Floor Beam,
 B = Bracing: Sway or Lateral

REMOVAL CHECKSHEET CREW A

Salvage Mark

	Member Type	ID	Crew	Pieces Included
Example	T	- 999	- A	U8W-U10W; U10W-L10W
	S	- 252	- A	S4 @ FT7 TO FT8
	S	- 253	- A	S4 @ FT6 TO FT7
	S	- 254	- A	S5 @ FT6 TO FT7
	S	- 255	- A	S5 @ FT6 TO FT7
	B	- 256	- A	CM6-M6E
	T	- 257	- A	U6E-L6E
	FT	- 258	- A	FT6L10, PORTION OF L6E-U6E
	B	- 259	- A	CL6-M6E
	FT	- 260	- A	FT6U14-L10
	FT	- 261	- A	FT6U13-L10
	FT	- 262	- A	FT6U14-L10
	B	- 263	- A	FT6L10-CM6
	S	- 264	- A	S7 @ FT7 TO FT8
	S	- 265	- A	S7 @ FT6 TO FT7
	S	- 266	- A	S6 @ FT6 TO FT7
	S	- 267	- A	S6 @ FT7 TO FT8
	B	- 268	- A	CU8-U7E @ U7E, CUT FROM B-269-A
	B	- 269	- A	CU8-U7E
	FT	- 270	- A	FT7U8-U10
	FT	- 271	- A	MISC KICKER
	FT	- 272	- A	MISC KICKER
	FT	- 273	- A	MISC KICKER
	FT	- 274	- A	MISC KICKER
	FT	- 275	- A	FT7L9
	T	- 276	- A	U7E
	FT	- 277	- A	FT7U10-L9, FT7U9-L9, FT7U8-L9
	FT	- 278	- A	FT7L9 KICKER
	B	- 279	- A	UNKNOWN BRACE MEMBER (CU7-U6E??)
	B	- 280	- A	FT7L10-CM7
	T	- 281	- A	L6E-L7E, L6E
	T	- 282	- A	L7E-U7E
	FT	- 283	- A	FT7U10-L10
	S	- 284	- A	S2 @ FT6 TO FT7 (INCLUDES SPLICE)
	T	- 285	- A	U8E-U7E
	S	- 290	- A	S1 @ FT6 TO FT7

T = Main Truss, FT = Floor Truss
 S = Stringer, FB = Floor Beam,
 B = Bracing: Sway or Lateral

REMOVAL CHECKSHEET CREW A

Salvage Mark

Member Type	ID	Crew	Pieces Included
Example T	- 999	- A	U8W-U10W; U10W-L10W
T	- 291	- A	L7E-U6E
FT	- 292	- A	FT7U13-U14
FT	- 293	- A	FT7U13-L10
T	- 294	- A	L7E-U8E WEB PLATE
S	- 295	- A	S1 @ FT7 & FT8
S	- 296	- A	S2 @ FT7 TO FT8
S	- 297	- A	S2 @ FT8
S	- 298	- A	S1 @ FT8
T	- 299	- A	L7E-U8E
S	- 300	- A	S8 @ FT7 TO FT8
S	- 301	- A	S8 @ FT6 TO FT7 (W/ SPLICE)
S	- 302	- A	S8 @ FT4 TO FT5
S	- 303	- A	S8 @ FT6 TO FT7
S	- 304	- A	S8 @ FT5
B	- 305	- A	FT6L10-CM6
B	- 306	- A	U4E-CU5
B	- 307	- A	CM6-M6E
B	- 308	- A	L6E-CL7
B	- 309	- A	L6E-CL6
B	- 310	- A	CL6-M6E
FT	- 311	- A	FT6L6
B	- 312	- A	CM6-M6W
B	- 313	- A	U4W-CU5
B	- 314	- A	U4W-CU5
B	- 315	- A	CL6-L5E
FT	- 316	- A	FT6U6-U7
S	- 318	- A	S12 @ FT6 TO FT7
S	- 319	- A	S12 @ FT7 (W/ SPLICE)
S	- 320	- A	S11 @ FT7 (W/ SPLICE)
S	- 321	- A	S11 @ FT6
S	- 322	- A	S11 @ FT5 (W/ SPLICE)
S	- 323	- A	S11 @ FT4 (END) TO FT5
S	- 324	- A	S9 @ FT6
S	- 325	- A	S9 @ FT5 TO FT6
B	- 326	- A	FT6L2-CM6

T = Main Truss, FT = Floor Truss
 S = Stringer, FB = Floor Beam,
 B = Bracing: Sway or Lateral

REMOVAL CHECKSHEET CREW A

Salvage Mark

Member Type	ID	Crew	Pieces Included
Example T	- 999	- A	U8W-U10W; U10W-L10W
B	- 327	- A	M6W-CL6
B	- 328	- A	FT4L2-CL4
B	- 329	- A	FT4L10-CL4
S	- 330	- A	S13 @ FT7 TO FT8
S	- 331	- A	S13 @ FT7 TO FT8 (END)
S	- 332	- A	S13 @ FT5 TO FT6 (W/ SPLICE)
S	- 333	- A	S13 @ FT7 (W/ SPLICE)
S	- 334	- A	S14 @ FT5 TO FT6 (W/ SPLICE)
S	- 335	- A	S14 @ FT6
S	- 336	- A	S14 @ FT6 TO FT7
S	- 337	- A	S12 @ FT4 (END) TO FT5
S	- 338	- A	S14 @ FT7
S	- 339	- A	S10 @ FT7 TO FT8
B	- 340	- A	L3W-CL4
FT	- 341	- A	FT6U0-L2
B	- 342	- A	L5W-CL6
B	- 343	- A	L4W-CL4
B	- 344	- A	CL4, CL4-L4E AND CL4-L3E
B	- 345	- A	CL6
S	- 346	- A	S9 @ FT4 (END) TO FT5
S	- 347	- A	S13 @ FT5
S	- 348	- A	S14 @ FT4 (END) TO FT5
S	- 349	- A	S12 @ FT7 TO FT8
S	- 350	- A	S13 @ FT4 (END) TO FT5
S	- 351	- A	S13 @ FT5
S	- 352	- A	S12 @ FT7 TO FT8
S	- 353	- A	S12 @ FT7
S	- 354	- A	S11 @ FT4 (END) TO FT5
S	- 355	- A	S10 @ FT5
S	- 356	- A	S12 @ FT6 TO FT7
S	- 357	- A	S9 @ FT7 (W/ SPLICE)
S	- 358	- A	S11(?) @ FT8 (END)
S	- 359	- A	S10 @ FT6 TO FT7
S	- 360	- A	S10 @ FT6 TO FT7 (W/ SPLICE)
S	- 361	- A	S10 @ FT5 TO FT6 (W/ KICKER)

T = Main Truss, FT = Floor Truss
 S = Stringer, FB = Floor Beam,
 B = Bracing: Sway or Lateral

REMOVAL CHECKSHEET CREW A

Salvage Mark

Member Type	ID	Crew	Pieces Included
Example T	- 999	- A	U8W-U10W; U10W-L10W
S	- 362	- A	S11 @ FT6 TO FT7
S	- 363	- A	S9 @ FT7 TO FT8
S	- 364	- A	FT6L4 KICKER
S	- 365	- A	FT5L4 KICKER
S	- 366	- A	S9 @ FT5 (W/ SPLICE)
FT	- 367	- A	FT KICKER
B	- 368	- A	FT4L2-CL4
B	- 369	- A	U7W-CU8
FT	- 370	- A	FT7U0-U2
T	- 371	- A	U4W, FT4U2
FT	- 372	- A	FT4U0-U1
T	- 373	- A	U4W-L4W @ FT4L2
FT	- 374	- A	FT4U0-L2
FT	- 375	- A	FT4U1-L2
T	- 376	- A	U4W-L4W
T	- 377	- A	U4W-U5W
T	- 378	- A	U4W-L5W
T	- 379	- A	L3W-L4W, 30' LONG
B	- 380	- A	L4W-CL5
T	- 381	- A	L4W NODE, L4W-L5W
T	- 382	- A	L4W NODE, L4W-L5W, SAME AS T-381-A
S	- 383	- A	S11 (?) @ FT8 (END)
T	- 384	- A	U5W, FT5U2
B	- 385	- A	FT5L2-CL5
FT	- 386	- A	FT5U0-FT5U1
B	- 387	- A	U5W-CU6
FT	- 388	- A	FT5U0-L2
B	- 389	- A	FT5L10-CL5
T	- 390	- A	U5W-L5W
B	- 391	- A	L5W-CL5, CL5
B	- 392	- A	L4E-CL5
B	- 393	- A	L6W-CL6
B	- 394	- A	L4W-CL5
B	- 395	- A	L5W-CL6
B	- 396	- A	M6W

T = Main Truss, FT = Floor Truss
 S = Stringer, FB = Floor Beam,
 B = Bracing: Sway or Lateral

REMOVAL CHECKSHEET CREW A

Salvage Mark

Member Type	ID	Crew	Pieces Included
Example T	- 999	- A	U8W-U10W; U10W-L10W
FT	- 397	- A	FT5U1-L2
FT	- 398	- A	FT6U1-L2
FT	- 399	- A	FT5L4
FT	- 400	- A	FT5U3-U4
FT	- 401	- A	FT5U5-U7
FT	- 402	- A	FT5L6, FT5U8-L6
FT	- 403	- A	FT5U6-L6, FT5U5-L6
FT	- 404	- A	FT5U7-L6
T	- 405	- A	U5W-U6W
FT	- 406	- A	FT6L2-L4
FT	- 407	- A	FT6U0-U2
T	- 408	- A	L5W-U6W
FT	- 409	- A	FT6U3, FT6U3-L2, FT6U3-L4
FT	- 410	- A	FT6U4-U5
T	- 411	- A	L5W
T	- 412	- A	L5W-L6W
B	- 413	- A	U6W-CU7
FT	- 414	- A	FT6U5-L6
T	- 415	- A	L6W-U6W
T	- 416	- A	U6W
T	- 417	- A	U6W-L7W
B	- 418	- A	FT6L2-CM6
T	- 419	- A	U7W-U6W
B	- 420	- A	L6W-CL7
S	- 421	- A	S14 @ FT8 (END) to FT7
S	- 422	- A	S14 @ FT7 TO FT6 (W/SPLICE)
T	- 423	- A	U6W-L7W
T	- 424	- A	U7W-U8W
T	- 425	- A	L6W-L7W
T	- 426	- A	U7W-L7W; TOP HALF
T	- 427	- A	U7W-L7W @ M7W
FT	- 428	- A	FT7L2-L4
B	- 429	- A	M7W-CM7 W/ M7W END
B	- 430	- A	CM7-FT7L10 W/ CM7 END
B	- 431	- A	L7W-CL7 W/ L7W END

T = Main Truss, FT = Floor Truss
 S = Stringer, FB = Floor Beam,
 B = Bracing: Sway or Lateral

REMOVAL CHECKSHEET CREW A

Salvage Mark

Member Type	ID	Crew	Pieces Included
Example T	- 999	- A	U8W-U10W; U10W-L10W
B	- 432	- A	L6E-CL7
B	433	- A	FT7L2-CM7
B	- 434	- A	M7W-CL7
B	- 435	- A	CL7-M7E
B	- 436	- A	CM7 w/ CM7-M7E AND CM7-M7W
FT	- 437	- A	FT7U0-L2
FT	- 438	- A	FT7U1-L2
B	- 439	- A	L6W-CL7
B	- 440	- A	CL7-L7E
B	- 441	- A	CL7
FT	- 442	- A	FT7U0-L2
B	- 443	- A	LOWER LATERAL @ L7W, 4' LONG
T	- 446	- A	L7E-U8E; WEST FLANGE
T	- 448	- A	L7E-U8E; EAST FLANGE
FT	- 449	- A	FT7U12-U13
T	- 450	- A	L7E-U6E; BOTTOM SECTION NEAR L7E
T	- 451	- A	L7W
T	- 452	- A	L7W-U8W; LOWER SECTION
T	- 453	- A	L7W-U8W; UPPER SECTION
T	- 454	- A	L7E-L6E; NORTH SECTION
T	- 455	- A	L7E
T	- 456	- A	L7E-U7E
FT	- 457	- A	FT8L4 KICKER
FT	- 460	- A	FT7U8-L6
FT	- 461	- A	FT7U7-L6
FT	- 462	- A	FT7U6-L6
FT	- 463	- A	FT7L6-L9
B	- 465	- A	CL8-L7E W/ L7E-CL7
FT	- 467	- A	FT7U3-L2
FT	- 468	- A	FT7U4-L4
FT	- 469	- A	FT7U3-L4
FT	- 470	- A	FT7U3-U4
FT	- 471	- A	FT7U5-L6
B	- 472	- A	CU7-U6E
FT	- 473	- A	FT7U6-U7

T = Main Truss, FT = Floor Truss
 S = Stringer, FB = Floor Beam,
 B = Bracing: Sway or Lateral

REMOVAL CHECKSHEET CREW A

Salvage Mark

Member Type	ID	Crew	Pieces Included
Example T	- 999	- A	U8W-U10W; U10W-L10W
FT	- 474	- A	FT7U5
FT	- 475	- A	FT7L4-L6
T	- 476	- A	L7E-U8E; EAST FLANGE
T	- 477	- A	L7E-U8E; EAST FLANGE
T	- 478	- A	L7E-U8E; WEST FLANGE
FT	- 479	- A	FT6'U12-U14
FT	- 480	- A	FT6'U13-L10
FT	- 481	- A	FT6U8-L9
FT	- 482	- A	U6E-L6E W/ M6E
T	- 483	- A	U8E-L7E WEB
T	- 484	- A	U6E-U7E
S	- 485	- A	S13 @ FT6
FT	- 486	- A	FT6U7-L6
FT	- 487	- A	FT6U6-L6
T	- 488	- A	L5E-L6E
FT	- 489	- A	PART OF FT6L9 KICKER
FT	- 490	- A	FT7L9 KICKER
T	- 491	- A	U5E-L5E
B	- 492	- A	CL5-FT5L10 W/ CL5 END
B	- 493	- A	STUB FROM SWAY DIAG NEAR L1W
B	- 494	- A	STUB FROM SWAY DIAG NEAR L1W
FT	- 495	- A	FT5U10-L10
S	- 496	- A	S5 @ FT4 TO FT5
FT	- 497	- A	FT5L9 KICKER
T	- 498	- A	U6E-L5E, PART OF FLANGE
FT	- 499	- A	FT7U5-L4
FT	- 500	- A	FT4L2-L4, SHORT SEGMENT
S	- 501	- A	S13 @ FT2 TO FT3
S	- 502	- A	S14 @ FT2 TO FT3
S	- 503	- A	S14 @ FT1 TO FT2
S	- 504	- A	S13 @ FT1 TO FT2
S	- 505	- A	S12 @ FT1 TO FT2
S	- 506	- A	STUB FROM FT1
S	- 507	- A	S4 @ FT7 TO FT8
S	- 508	- A	S14 @ FT7

T = Main Truss, FT = Floor Truss
 S = Stringer, FB = Floor Beam,
 B = Bracing: Sway or Lateral

REMOVAL CHECKSHEET CREW A

Salvage Mark

	Member Type	ID	Crew	Pieces Included
Example	T	- 999	- A	U8W-U10W; U10W-L10W
	T	- 509	- A	U5W-U6W BOTT. PLATE
	T	- 510	- A	U5W-U6W SIDE PLATE
	T	- 511	- A	U5W-U6W SIDE PLATE
	T	- 512	- A	U5W-U6W TOP PLATE
	S	- 513	- A	S9 @ FT2 TO FT3
	S	- 514	- A	S10 @ FT2
	S	- 515	- A	S11 @ FT3 TO FT4
	B	- 516	- A	SWAY DIAG W/ END
	S	- 517	- A	S11 @ FT1 TO FT2
	S	- 518	- A	S12 @ U0 TO FT1

T = Main Truss, FT = Floor Truss
 S = Stringer, CG = Cross Girder,
 B = Bracing: Sway or Lateral

REMOVAL CHECKSHEET CREW C

Salvage Mark

Member Type	ID	Crew	Pieces Included
Example T	- 999	- C	U8W-U10W; U10W-L10W
S	- 1	- C	S14 @ FT4' TO FT5'
S	- 2	- C	S13 @ FT4' TO FT5'
S	- 3	- C	S13 @ FT5' TO FT4'
S	- 4	- C	S14 @ FT5' TO FT4'
S	- 5	- C	S14 @ FT3' TO FT2'
S	- 6	- C	S14 @ FT4' TO FT3' w/ FT4'
S	- 7	- C	S13 @ FT4' TO FT3'
S	- 8	- C	S13 @ FT3' TO FT4'
S	- 9	- C	S12 @ FT3' TO FT4'
S	- 10	- C	S12 @ FT4' TO FT3' w/ FT4'
S	- 11	- C	S12 @ FT4' TO FT5' w/FT4'
S	- 12	- C	S12 @ FT4.5' TO FT5.5'
S	- 13	- C	S11 @ FT5' TO FT6'
S	- 14	- C	S11 @ FT4' TO FT5'
S	- 15	- C	S10 @ FT4.5' TO FT5.5'
S	- 16	- C	S10 @ FT4' TO FT5' w/FT4'
S	- 17	- C	S9 @ FT4.5' TO FT5.5'
S	- 18	- C	S9 @ FT4' TO FT5' w FT4'
S	- 19	- C	S8 @ FT4.5' TO FT5.5'
S	- 20	- C	S8 @ FT4' TO FT5' w/FT4'
S	- 21	- C	S11 @ FT2.5' TO FT3'
S	- 22	- C	S11 @ FT4' TO FT3' w/FT4'
S	- 23	- C	S10 @ FT3.5' TO FT3'
S	- 24	- C	S10 @ FT4' TO FT3' w/FT4'
S	- 25	- C	S9 @ FT2.5' TO FT3'
S	- 26	- C	S9 @ FT4' TO FT3' w/FT4'
S	- 27	- C	S8 @ FT2' TO FT3'
S	- 28	- C	S8 @ FT3' TO FT4'
S	- 29	- C	S7 @ FT3' TO FT4'
S	- 30	- C	S7 @ FT3' TO FT4' w/FT4'
S	- 31	- C	S6 @ FT3' TO FT4'
S	- 32	- C	S6 @ FT3' TO FT4' w/FT4'
S	- 33	- C	S5 @ FT2.5' TO FT3'
S	- 34	- C	S5 @ FT3' TO FT4' w/FT4'
S	- 35	- C	S4 @ FT3.5' TO FT3'
S	- 36	- C	S4 @ FT3' TO FT4' w/FT4'

T = Main Truss, FT = Floor Truss
 S = Stringer, CG = Cross Girder,
 B = Bracing: Sway or Lateral

REMOVAL CHECKSHEET CREW C

Salvage Mark

Member Type	ID	Crew	Pieces Included
Example T	999	C	U8W-U10W; U10W-L10W
S	37	C	S7 @ FT4' TO FT4.5' w/FT4'
S	38	C	S7 @ FT4.5' TO FT5'
S	39	C	S7 @ FT5' TO FT5.5'
S	40	C	S6 @ FT4' TO FT4.5'
S	41	C	S6 @ FT4.5' TO FT5'
S	42	C	S6 @ FT5' TO FT5.5'
S	43	C	S3 @ FT3' TO FT4' w/FT4'
S	44	C	S3 @ FT3' TO FT4'
S	45	C	S2 @ FT3.5' TO FT3'
S	46	C	S2 @ FT3' TO FT4' w/FT4'
S	47	C	S1 @ FT2.5' TO FT3'
S	48	C	S1 @ FT3' TO FT4' w/FT4'
S	49	C	S5 @ FT4' TO FT4.5' w/FT4'
S	50	C	S5 @ FT4.5' TO FT5'
S	51	C	S5 @ FT5' TO FT5.5'
S	52	C	S4 @ FT4' TO FT4.5' w/FT4'
S	53	C	S4 @ FT4.5' TO FT5'
S	54	C	S4 @ FT5' TO FT5.5'
S	55	C	S3 @ FT4' TO FT4.5' w/FT4'
S	56	C	S3 @ FT4.5' TO FT5'
S	57	C	S3 @ FT5' TO FT5.5'
S	58	C	S2 @ FT4' TO FT4.5' w/FT4'
S	59	C	S2 @ FT4.5' TO FT5'
S	60	C	S2 @ FT5' TO FT5.5'
S	61	C	S1 @ FT4' TO FT4.5' w/FT4'
S	62	C	S1 @ FT4.5' TO FT5'
S	63	C	S1 @ FT5' TO FT5.5'
S	64	C	S14 @ FT2' TO FT3'
FT	65	C	FT3'U0-L2
FT	66	C	FT5'L2-U1
FT	67	C	FT5'U2-U0 W/U0-L2
FT	68	C	FT4'U2-U0 W/U0-L2
FT	69	C	FT4'U1-L2
FT	70	C	FT3'U1-L2
S	71	C	S14 @ FT2' TO FT3'
S	72	C	S10 @ FT2' TO FT3'

T = Main Truss, FT = Floor Truss
 S = Stringer, CG = Cross Girder,
 B = Bracing: Sway or Lateral

REMOVAL CHECKSHEET CREW C

Salvage Mark

Member Type	ID	Crew	Pieces Included
Example T	- 999	- C	U8W-U10W; U10W-L10W
S	- 73	- C	S10 @ FT2' TO FT3'
S	- 74	- C	S11 @ FT2' TO FT3'
S	- 75	- C	S11 @ FT2' TO FT3'
T	- 76	- C	U4'W-U5'W
T	- 77	- C	U4'W-L5'W
S	- 78	- C	S8 @ FT2'
S	- 79	- C	S6 @ FT1' TO FT2'
S	- 80	- C	S5 @ FT1' TO FT2'
S	- 81	- C	S4 @ FT1' TO FT2'
S	- 82	- C	S7 @ FT1' TO FT3'
T	- 83	- C	L4'W-L5'W (SECTION JUST SOUTH OF L4'W)
T	- 84	- C	L4'W w/L4'W-U4'W, L4'W-CL4', L4'W-L3'W, L4'-CL5' ATTACHED
T	- 85	- C	U4'W NODE
B	- 86	- C	U4'W-CU5'
T	- 87	- C	U4'W-L4'W
T	- 88	- C	L3'W-U4'W
B	- 89	- C	CU5'-U4'W
T	- 90	- C	L3'W-L4'W
B	- 91	- C	CL4'-L4'W
T	- 92	- C	U4'W-U3'W
B	- 93	- C	CL4'-FT4'L2
B	- 94	- C	CL4'-L4'W
FT	- 95	- C	FT4'U3-U5
FT	- 96	- C	FT4' @ L4
S	- 97	- C	
B	- 98	- C	CU4'-U3'E
B	- 99	- C	CU4'-U3'W
FT	- 100	- C	FT4'U6-U10
FT	- 101	- C	FT4'L6-L9
B	- 102	- C	CU5'-U4'E
B	- 103	- C	U3'W-CU4'
B	- 104	- C	CL4'-L4'E
S	- 105	- C	
FT	- 106	- C	FT4' L4 KICKER
B	- 107	- C	CL4'

T = Main Truss, FT = Floor Truss
 S = Stringer, CG = Cross Girder,
 B = Bracing: Sway or Lateral

REMOVAL CHECKSHEET CREW C

Salvage Mark

Member Type	ID	Crew	Pieces Included
Example T	- 999	- C	U8W-U10W; U10W-L10W
FT	- 108	- C	FT3'U3-U5
FT	- 109	- C	FT3'L4
B	- 110	- C	L3'E-CL4' (SAME AS B-112-C)
B	- 111	- C	CL4'-FT4'L10
B	- 112	- C	L3'E-CL4' (SAME AS B-110-C)
B	- 113	- C	L3'W-CL4'
B	- 114	- C	CU4'-U3'E
B	- 115	- C	CL3'-L3'W
B	- 116	- C	CL3'-FT3'L2
T	- 117	- C	U3'W NODE
T	- 118	- C	U3'W (SMALL PIECE FROM T-117-C)
T	- 119	- C	U3'W-L3'W @ BOTTOM OF FT3
T	- 120	- C	L4'E-U4'E
T	- 121	- C	U2'W-L3'W
T	- 122	- C	L3'W-U2'W
T	- 123	- C	L3'W w/L3'W-U4'W, L3'W-U3'W
T	- 124	- C	U4'E-U5'E
T	- 125	- C	L2'W-L3'W
T	- 126	- C	U4'E-L5'E
B	- 127	- C	L2'W-CL3'
T	- 128	- C	L4'E-CL4' @ L4'E, w/L3'E-L4'E, L4'E-L5'E
T	- 129	- C	U4'E-L5'E
FT	- 130	- C	FT4' @ U14-U13 w/U14-L10, U13-L10
B	- 131	- C	CL3' w/ PORTIONS OF 6 MEMBERS
T	- 132	- C	L3'E-U4'E
T	- 133	- C	U4'E, w/U4'E-L4'E, U4'E-U3'E, 10' OF U4'E-U5'E, U4'E-L3'E
T	- 134	- C	L3'W-U4'W 6' TOP PLATE
B	- 135	- C	CU3'-U2'W
T	- 136	- C	U3'E-U4'E
B	- 137	- C	CL3'-L3'W 2' LONG
B	- 138	- C	U4'E-CU5' (SAME AS B-141-C)
T	- 139	- C	L3'E-L4'E
T	- 140	- C	L4'E-FT4'L10
B	- 141	- C	CU5'-U4'E (SAME AS B-138-C)
B	- 142	- C	CL3'-L3'E

T = Main Truss, FT = Floor Truss
 S = Stringer, CG = Cross Girder,
 B = Bracing: Sway or Lateral

REMOVAL CHECKSHEET CREW C

Salvage Mark

Member Type	ID	Crew	Pieces Included
Example T	- 999	- C	U8W-U10W; U10W-L10W
B	- 143	- C	FT3'L10-CL3'
B	- 144	- C	U1'W-CU2'
B	- 145	- C	U1'E-CU2'
B	- 146	- C	U2'E-CU3'
B	- 147	- C	CU2'
B	- 148	- C	U2'E END OF U2'E-CU3'
T	- 149	- C	L3'E-U3'E
FT	- 150	- C	FT3'U12-U14
T	- 151	- C	U3'E w/U3'E-U4'E
T	- 152	- C	L1'E-U2'E
B	- 153	- C	U3'E-CU4'
B	- 154	- C	L2'E-CL3' @ L2'E
FT	- 155	- C	FT3'U10-U6
FT	- 156	- C	FT3'L6-L8
T	- 157	- C	U3'W-U2'W
T	- 158	- C	U2'E-L3'E
T	- 159	- C	L3'E w/L3'E-L2'E
B	- 160	- C	L2'E-CL3'
FT	- 161	- C	FT3'U13-L10, U14-L10
T	- 162	- C	L2'E NODE
B	- 163	- C	L2'E-CL2'
T	- 164	- C	U2'E w/U2'E-L3'E, U2'E-U3'E, FT2'L10
B	- 165	- C	FT2'L10-CL2'
B	- 166	- C	CL2'-L1'E
T	- 167	- C	L2'E-U2'E
FT	- 168	- C	FT2'U12-U14
B	- 169	- C	FT1'L10-CL1'
FT	- 170	- C	FT2'L10-U14
	- 171	- C	
T	- 172	- C	L1'E w/L1'E-U2'E, L1'E-L2'E
B	- 173	- C	L1'W-CL2'
B	- 174	- C	CL1'-FT1'L2
B	- 175	- C	CL1'-L1'W
B	- 176	- C	CL1'-L1'E
T	- 177	- C	L1'W-U2'W
B	- 178	- C	CL2' w/ PORTIONS OF ALL MEMBERS

T = Main Truss, FT = Floor Truss
 S = Stringer, CG = Cross Girder,
 B = Bracing: Sway or Lateral

REMOVAL CHECKSHEET CREW C

Salvage Mark

Member Type	ID	Crew	Pieces Included
Example T	999	C	U8W-U10W; U10W-L10W
B	179	C	CL1'
FT	180	C	FT2'U6-U10
FT	181	C	FT2'L6-L8
FT	182	C	FT2'L4
FT	183	C	FT2'U3-U5
T	184	C	L1'W
T	185	C	L1'W-U1'W
T	186	C	L1'W-L2'W w/ L2'W, L2'W-L3'W
B	187	C	L2'W-CL2'
B	188	C	CL2'-FT2'L2
FT	189	C	FT1'L10-U13, L10-U14
T	190	C	U0'E-L1'E SOUTH HALF
FT	191	C	FT1'U12
T	192	C	U2'W NODE w/L2'W-U2'W, FT2'L2
B	193	C	FT1'L2-CL1'
FT	194	C	FT1'L10-U13, L10-U14
FB	201	C	EAST CANTILEVER CROSS GIRDER @ U0' FLOOR BEAM
T	202	C	U1'W-U2'W
B	203	C	CL5'-L4'E @CL5'
FT	204	C	FT5'U8-U10 (CUT INTO FT-215-C AND FT-216-C)
B	205	C	U5'E-CU6
B	206	C	CL5'-L4'E
FT	207	C	FT4' KICKER @ L9
FT	208	C	KICKER NEAR FT4'-FT5'
FT	209	C	FT5' KICKER
FT	210	C	FT5' KICKER @ L4
FT	211	C	FT5' KICKER @ L4 (SHORT PIECE TO FT-210-C)
FT	212	C	FT1'U0-L2
FT	213	C	FT1'U0-L2
FT	214	C	FT1'U0-L2
FT	215	C	FT5'L9
FT	216	C	FT5'U10-U8
FT	217	C	FT5'U12-U14
S	218	C	S6 @ U0'
S	219	C	S6 @ FT1'

T = Main Truss, FT = Floor Truss
 S = Stringer, CG = Cross Girder,
 B = Bracing: Sway or Lateral

REMOVAL CHECKSHEET CREW C

Salvage Mark

Member Type	ID	Crew	Pieces Included
Example T	- 999	- C	U8W-U10W; U10W-L10W
S	- 220	- C	S5 @ U0'
S	- 221	- C	S5 @ FT1'
S	- 222	- C	S3 @ U0'
S	- 223	- C	S3 @ FT1'
S	- 224	- C	S7 @ U0'
S	- 225	- C	S7 @ FT1'
FT	- 226	- C	FT1'
T	- 227	- C	U0'E-L1'E
T	- 228	- C	U0'E-U1'E
T	- 229	- C	U1'E-U2'E
S	- 230	- C	S4 @ U0'
S	- 231	- C	S4 @ FT1'
T	- 232	- C	U0'E NODE
T	- 233	- C	U1'E NODE w/ U1'E-U2'E
T	- 234	- C	U1'W NODE w/ U1'W-U2'W
FB	- 235	- C	U0' FLOOR BEAM
S	- 236	- C	S10 @ FT1' TO U0'
S	- 237	- C	S10 @ FT1' TO U0'
S	- 238	- C	S8 @ FT1' TO U0'
S	- 239	- C	S8 @ FT1' TO U0'
S	- 240	- C	S9 @ FT1' TO U0'
S	- 241	- C	S9 @ FT1' TO U0'
T	- 242	- C	U1'W-U0'W
S	- 243	- C	S11 @ FT1' TO U0'
S	- 244	- C	S11 @ FT1' TO U0'
B	- 245	- C	CU1'-U0'W
B	- 246	- C	CU1'-U0'W
FT	- 247	- C	FT1'L2-L4
FT	- 248	- C	FT1'U3-L2
T	- 249	- C	U1'W-L1'W w/ FT1'L2
FT	- 250	- C	FT1'U3-U5 w/U3-L4, U4-L4
S	- 251	- C	S12 @ U0' TO FT1'
S	- 252	- C	S12 @ U0' TO FT1'
T	- 253	- C	U0'W-L1'W
FT	- 254	- C	FT1'L6-L9
FT	- 255	- C	FT1'L4-L6

T = Main Truss, FT = Floor Truss
 S = Stringer, CG = Cross Girder,
 B = Bracing: Sway or Lateral

REMOVAL CHECKSHEET CREW C

Salvage Mark

Member Type	ID	Crew	Pieces Included
Example T	999	C	U8W-U10W; U10W-L10W
FT	256	C	FT1'U6-U7
B	257	C	U0'E-CU1'
B	258	C	U0'E-CU1'
S	259	C	S1 @ FT5' TO FT6'
S	260	C	S1 @ FT6' TO FT7'
S	261	C	S1 @ FT7'
S	262	C	S1 @ FT8'
S	263	C	S2 @ FT5' TO FT6'
S	264	C	S2 @ FT6' TO FT7'
S	265	C	S2 @ FT7'
S	266	C	S2 @ FT7' TO FT8'
S	267	C	S3 @ FT5' TO FT6'
S	268	C	S3 @ FT6' TO FT7'
S	269	C	S2 @ FT8'
S	270	C	S3 @ FT7'
S	271	C	S3 @ FT7' TO FT8'
S	272	C	S3 @ FT8'
S	273	C	S4 @ FT6' TO FT7'
S	274	C	S4 @ FT6' TO FT7'
S	275	C	S4 @ FT7' TO FT8'
S	276	C	S4 @ FT7' TO FT8'
S	277	C	S4 @ FT5' TO FT6'
S	278	C	S5 @ FT5' TO FT6'
S	279	C	S5 @ FT6' TO FT7'
S	280	C	S5 @ FT6' TO FT7'
S	281	C	S5 @ FT7' TO FT8'
S	282	C	S5 @ FT7' TO FT8'
S	283	C	S6 @ FT5' TO FT6'
S	284	C	S6 @ FT6' TO FT7'
S	285	C	S6 @ FT6' TO FT7'
S	286	C	S6 @ FT7' TO FT8'
S	287	C	S6 @ FT7' TO FT8'
S	288	C	S6 @ FT8'
S	289	C	S7 @ FT5' TO FT6'
S	290	C	S7 @ FT6' TO FT7'
S	291	C	S7 @ FT6' TO FT7'

T = Main Truss, FT = Floor Truss
 S = Stringer, CG = Cross Girder,
 B = Bracing: Sway or Lateral

REMOVAL CHECKSHEET CREW C

Salvage Mark

Member Type	ID	Crew	Pieces Included
Example T	- 999	- C	U8W-U10W; U10W-L10W
S	- 292	- C	S7 @ FT7' TO FT8'
S	- 293	- C	S7 @ FT7' TO FT8'
S	- 294	- C	S8 @ FT5' TO FT6'
S	- 295	- C	S8 @ FT6' TO FT7'
S	- 296	- C	S8 @ FT6' TO FT7'
S	- 297	- C	S8 @ FT7' TO FT8'
S	- 298	- C	S8 @ FT8'
FT	- 299	- C	FT1'U13-U14
S	- 300	- C	S9 @ FT5' TO FT6'
S	- 301	- C	S9 @ FT6' TO FT7'
S	- 302	- C	S9 @ FT6' TO FT7'
S	- 303	- C	S9 @ FT7' TO FT8'
S	- 304	- C	S9 @ FT8'
FT	- 305	- C	FT1'L10 w/U1'E-LI'E
FT	- 306	- C	FT1'L9-L10
S	- 307	- C	S10 @ FT5' TO FT6'
S	- 308	- C	S10 @ FT6' TO FT7'
S	- 309	- C	S10 @ FT6' TO FT7'
S	- 310	- C	S10 @ FT7' TO FT8'
S	- 311	- C	S10 @ FT7' TO FT8'
S	- 312	- C	S11 @ FT8'
S	- 313	- C	S11 @ FT6' TO FT7'
S	- 314	- C	S11 @ FT6' TO FT7'
S	- 315	- C	S11 @ FT5' TO FT6'
S	- 316	- C	S11 @ FT7' TO FT8'
S	- 317	- C	S12 @ FT5' TO FT6'
S	- 318	- C	S12 @ FT5' TO FT6'
S	- 319	- C	S12 @ FT6' TO FT7'
S	- 320	- C	S12 @ FT6' TO FT7'
S	- 321	- C	S12 @ FT7' TO FT8'
S	- 322	- C	S12 @ FT7' TO FT8'
FT	- 323	- C	FT1'U10-U8
FT	- 324	- C	FT1'L9
S	- 325	- C	S13 @ FT5' TO FT6'
S	- 326	- C	S13 @ FT6' TO FT7'
S	- 327	- C	S13 @ FT6' TO FT7'

T = Main Truss, FT = Floor Truss
 S = Stringer, CG = Cross Girder,
 B = Bracing: Sway or Lateral

REMOVAL CHECKSHEET CREW C

Salvage Mark

Member Type	ID	Crew	Pieces Included
Example T	- 999	- C	U8W-U10W; U10W-L10W
S	- 328	- C	S13 @ FT7' TO FT8'
S	- 329	- C	S13 @ FT7' TO FT8'
S	- 330	- C	S14 @ FT5' TO FT6'
S	- 331	- C	S14 @ FT6' TO FT7'
S	- 332	- C	S14 @ FT6' TO FT7'
S	- 333	- C	S14 @ FT7' TO FT8'
S	- 334	- C	S14 @ FT8'
S	- 335	- C	S14 @ FT7' TO FT8'
S	- 336	- C	MISC. STRINGER @ FT1' TO FT4'
S	- 337	- C	S2 @ FT0' TO FT1'
S	- 338	- C	S12 @ FT2' TO FT3'
S	- 339	- C	S13 @ FT2' TO FT3'
S	- 340	- C	MISC. STRINGER @ FT1' TO FT3'
S	- 341	- C	MISC. STRINGER @ FT1' TO FT3'
S	- 342	- C	S3 @ FT1' TO FT2'
S	- 343	- C	S3 @ FT0' TO FT1'
FT	- 344	- C	MISC. SECTION @ FT1'
T	- 345	- C	U6'W-U5'W
T	- 346	- C	U5'W INCLUDES CU6-U5'W/ FT5'-U2
B	- 347	- C	U5'W-CU6'
FT	- 348	- C	FT5' w/ U3-U2, U3-U6
FT	- 349	- C	FT5' w/ L6-U8, L6-U6, L6-U5, L6-U7
FT	- 350	- C	FT5'L4
S	- 351	- C	MISC. STRINGER @ FT1' TO FT3'
S	- 352	- C	S1 @ FT2' TO FT3'
S	- 353	- C	S3 @ FT2' TO FT3'
S	- 354	- C	MISC. STRINGER @ FT1' TO FT3'
S	- 355	- C	S1 @ U0'
S	- 356	- C	S2 @ FT3' TO FT4'
S	- 357	- C	S2 @ FT2' TO FT3'
S	- 358	- C	MISC. STRINGER @ FT1' TO FT3'
S	- 359	- C	MISC. STRINGER @ FT1' TO FT3'
FB	- 360	- C	FLOOR BEAM @ U0'
FB	- 361	- C	FLOOR BEAM @ U0'
FT	- 362	- C	FT5'L4 w/U5-L4, U4-L4, U3-L4
B	- 363	- C	L4'W-CL5'

T = Main Truss, FT = Floor Truss
 S = Stringer, CG = Cross Girder,
 B = Bracing: Sway or Lateral

REMOVAL CHECKSHEET CREW C

Salvage Mark

Member Type	ID	Crew	Pieces Included
Example T	- 999	- C	U8W-U10W; U10W-L10W
T	- 364	- C	U5'W-L5'W w/ FT5' @ L2
T	- 365	- C	U0'W NODE w/ U1'W
B	- 366	- C	FT5'L2-CL5 @ FT5'L2
T	- 367	- C	L5'W-U4'W
FT	- 368	- C	FT5'L6
B	- 369	- C	FT5'L2-CL5
T	- 370	- C	L5'E-L4'E
T	- 371	- C	U5'E-U6'E @ U5'E
T	- 372	- C	L4'W-L5'W
FT	- 373	- C	FT6'L4 KICKER
T	- 374	- C	U6'W-L5'W
T	- 375	- C	U5'W-L5'W
B	- 376	- C	U0'W-CU1' @ U0'W
FB	- 377	- C	FLOOR BEAM @ U0'
S	- 378	- C	S14 @ FT2' TO FT3'
S	- 379	- C	S14 @ U0'
S	- 380	- C	S2 @ FT2'
S	- 381	- C	MISC. STRINGER @ FT1' TO FT3'
S	- 382	- C	S13 @ FT2' TO FT3'
S	- 383	- C	S10 @ FT1' TO FT2'
S	- 384	- C	MISC. STRINGER @ FT1' TO FT3'
S	- 385	- C	MISC. STRINGER @ U0'
S	- 386	- C	S2 @ FT1'
B	- 388	- C	CU8'-U7'E
B	- 389	- C	CU8'-U7'W
T	- 390	- C	U8'W-L7'W
T	- 391	- C	U8'W-U7'W
FT	- 392	- C	FT6'U12-U14 (SAME AS FT-500-C)
T	- 393	- C	U8'E-L7'E UPPER
T	- 394	- C	U8'E-L7'E LOWER
T	- 395	- C	U8'E-U7'E
FT	- 396	- C	FT7'U12-U14
B	- 397	- C	U6'W-CU7'
B	- 398	- C	U6'E-CU7'
B	- 399	- C	FT7'L2-CM7'
B	- 400	- C	FT7'L10-CM7'

T = Main Truss, FT = Floor Truss
 S = Stringer, CG = Cross Girder,
 B = Bracing: Sway or Lateral

REMOVAL CHECKSHEET CREW C

Salvage Mark

Member Type	ID	Crew	Pieces Included
Example T	- 999	- C	U8W-U10W; U10W-L10W
B	- 401	- C	CM7'-M7'E
B	- 402	- C	CM7'-M7'W
B	- 403	- C	CM7' NODE
FT	- 404	- C	FT7'U10-U6
FT	- 405	- C	FT7'L10-L6
T	- 406	- C	U7'E-U6'E @U7'E
T	- 407	- C	U7'E-L7'E
FT	- 408	- C	FT7'U6-U3
FT	- 409	- C	FT7'L6-L2
FT	- 410	- C	FT7'U0-L2, U1-L2
T	- 411	- C	U7'W-U6'W @ U7'W
T	- 412	- C	U7'W-L7'W
FT	- 413	- C	FT6'L4-L6
FT	- 414	- C	FT6'L6-L9
FT	- 415	- C	FT6'U8-U10
FT	- 416	- C	FT6'U7-U3
T	- 417	- C	U6'E-U5'E PORTION
T	- 418	- C	U6'E NODE
T	- 419	- C	U5'E-L5'E
B	- 420	- C	U5'E-CU6'
B	- 421	- C	FT5'L10-CL5'
T	- 422	- C	U6'W NODE w/ U6'W-U5'W
B	- 423	- C	CL5'-FT5'L10
B	- 424	- C	L5'E-CL5'
B	- 425	- C	CL5'-L5'W
T	- 426	- C	L7'W-U6'W
T	- 427	- C	L5'E NODE
T	- 428	- C	U6'E-L5'E (SAME AS T-467-C)
T	- 429	- C	L7'W-U6'W
FT	- 430	- C	FT6'L2
T	- 431	- C	U6'W-L6'W w/ FT6'L2
T	- 432	- C	L7'E-U6'E
T	- 433	- C	L7'E-U6'E
T	- 434	- C	L6'E-U6'E
T	- 435	- C	L7'W-L6'W
T	- 436	- C	L6'E-L5'E

T = Main Truss, FT = Floor Truss
 S = Stringer, CG = Cross Girder,
 B = Bracing: Sway or Lateral

REMOVAL CHECKSHEET CREW C

Salvage Mark

Member Type	ID	Crew	Pieces Included
Example T	- 999	- C	U8W-U10W; U10W-L10W
B	- 437	- C	FT6'L2-CM6'
B	- 438	- C	L5'W-CL6'
B	- 439	- C	L5'W-CL6' @ L5'W
B	- 440	- C	M6'W-CM6'
B	- 441	- C	M6'W-CL6'
B	- 442	- C	CM6'-FT6'L10
B	- 443	- C	CL6'-L5'E @ L5'E (SAME AS B-444-C)
B	- 444	- C	CL6'-L5'E @ L5'E (SAME AS B-443-C)
B	- 445	- C	CM6'-M6'E @ M6'E
B	- 446	- C	L6'W-CL6'
B	- 447	- C	CL6'
B	- 448	- C	CL6'-M6'E
B	- 449	- C	L6'E-CL6'
T	- 450	- C	L6'E-L7'E
B	- 451	- C	CL7'-M7'E
B	- 452	- C	CL7'-M7'W
B	- 453	- C	L6'E-CL7'
B	- 454	- C	CL7'-L6'W
T	- 455	- C	U6'W-L5'W @ U6'W
T	- 456	- C	M6'E-L6'E
T	- 457	- C	U5'E-L5'E w/ FT5'U10-L10
B	- 458	- C	CL7'-L7'W
B	- 459	- C	CL7'
B	- 460	- C	CL7'-L7'E
B	- 461	- C	CL8'-L7'W
B	- 462	- C	CL8'-L7'E
T	- 463	- C	L6'W-L5'W @ L5'W
T	- 464	- C	L6'W-U6'W
FT	- 465	- C	FT5'L9-L10
B	- 466	- C	FT5'L10-CL5 w/ FT5'L2
T	- 467	- C	U6'E-L5'E (SAME AS T-428-C)
T	- 468	- C	L7'E NODE
T	- 469	- C	L7'W NODE
T	- 470	- C	L7'E-L8'E
T	- 471	- C	L7'W-L8'W
B	- 472	- C	L7'E-CL7' @ L7'E

T = Main Truss, FT = Floor Truss
 S = Stringer, CG = Cross Girder,
 B = Bracing: Sway or Lateral

REMOVAL CHECKSHEET CREW C

Salvage Mark

Member Type	ID	Crew	Pieces Included
Example T	999	C	U8W-U10W; U10W-L10W
FT	473	C	FT6'U0-U2
T	474	C	U6'W-L6'W?
FT	475	C	FT5'U3-L2
FT	476	C	FT7'U2-U0
FT	477	C	FT7'U14-L10, U13-L10
B	478	C	MISC. BRACING SECTION U0'-U5'
FT	479	C	FT1'U1-U0
S	480	C	S9 @ FT2'
S	481	C	S10 @ FT1' TO FT2'
S	482	C	S11 @ FT1' TO FT2'
B	483	C	L2E'-CL2'
FT	484	C	FT6' KICKER
FT	485	C	FT7' KICKER
S	486	C	S9 @ FT2' TO FT3'
FT	487	C	FT2'L2
FT	488	C	FT2'U3-U4
B	489	C	CU3'-U2'E
FT	490	C	FT1'U6-L6
T	491	C	L1'E-U1'E WEST WEB
T	492	C	L1'E-U1'E EAST WEB
S	493	C	S12 @ FT2'
S	494	C	S1 @ FT3'
FT	495	C	FT3'L2
FT	496	C	FT5'L2 SMALL SECTION
B	497	C	CU6'-U5'W, CU6'-U5'E @ CU6'
FT	498	C	FT5' DIAG. SMALL SECTION
T	499	C	L6W'-L5'W
FT	500	C	FT6'U14-L10 (SAME AS FT-392-C)
B	501	C	L7'E-CL8' @ L7'E SHORT PIECE
FT	502	C	FT7'L10-U10 SHORT PIECE
FT	503	C	FT7'U3-L2 SHORT PIECE
S	504	C	S4 @ FT2' TO FT1'
S	505	C	S6 @ FT1' TO FT2'
S	506	C	S8 @ FT1' TO FT2'
S	507	C	S8 @ FT2' TO FT3'
S	508	C	S5 @ FT2'

T = Main Truss, FT = Floor Truss
 S = Stringer, CG = Cross Girder,
 B = Bracing: Sway or Lateral

REMOVAL CHECKSHEET CREW C

Salvage Mark

Member Type	ID	Crew	Pieces Included
Example T	- 999	- C	U8W-U10W; U10W-L10W
S	- 509	- C	MISC. STRINGER
S	- 510	- C	MISC. STRINGER
FT	- 511	- C	FT2'L10-U13
S	- 512	- C	S5 @ FT2' TO FT3'
S	- 513	- C	S6 @ FT2' TO FT3'
S	- 514	- C	S4 @ FT2' TO FT3'
S	- 515	- C	S7 @ FT3' 8 FT LONG
S	- 516	- C	S8 @ FT5' TO FT6' w/ SPLICE
S	- 517	- C	MISC. STRINGER w/ SPLICE
S	- 518	- C	MISC. STRINGER w/ SPLICE
S	- 519	- C	MISC. STRINGER
S	- 520	- C	MISC. STRINGER
S	- 521	- C	MISC. STRINGER
S	- 522	- C	MISC. STRINGER @ FT
FT	- 523	- C	MISC. KICKER
FT	- 524	- C	MISC. KICKER
FT	- 525	- C	MISC. KICKER
FT	- 526	- C	MISC. KICKER
FT	- 527	- C	3' SECTION OF FT
FT	- 528	- C	FT TOP CHORD @ U12
T	- 529	- C	4' FLANGE SECTION (22"X1 1/8")