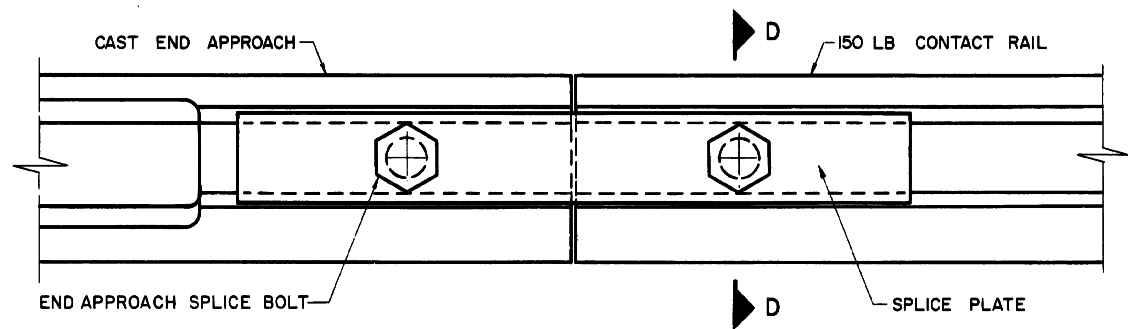
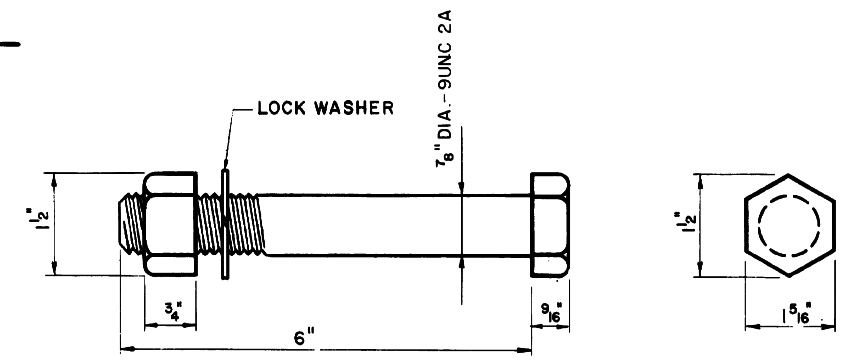
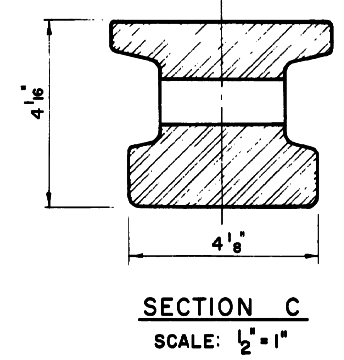
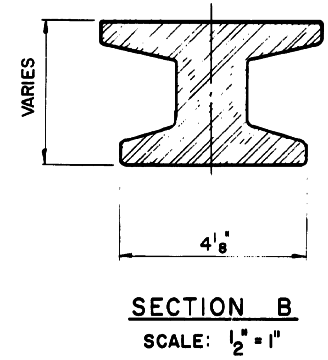
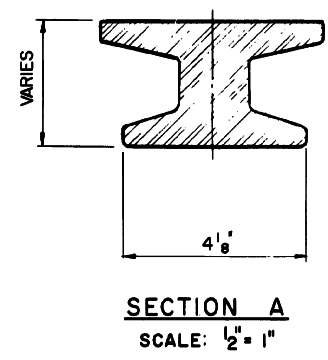
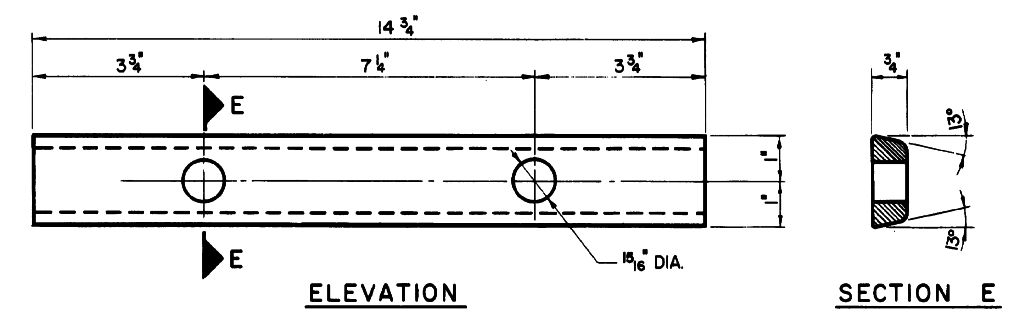
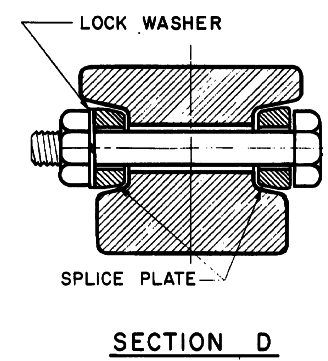


- NOTES:**
1. END APPROACH CASTING MUST BE TRUE AND SMOOTH ON THE BOTTOM
 2. ALL END APPROACH DIMENSIONS MUST BE ACCURATE IN ORDER THAT THE BOTTOM SURFACE WILL BE FLUSH WITH BOTTOM ADJACENT CONTACT RAIL AND TO INSURE AN ACCURATE ASSEMBLY.
 3. 6'-0" CAST END APPROACH MAY BE USED WITH WOOD TIES ON 25" SPACING.
 4. 6'-0" CAST END APPROACH MAY BE USED WITH CONCRETE TIES ON 24" SPACING.
 5. ENTRY POINT WITH SHOES SET AT 4 1/4"
 6. ENTRY POINT WITH SHOES SET AT 4"
 7. ENTRY POINT WITH SHOES SET AT 3 3/4"
 8. UPPER SURFACE OF END APPROACH SHALL BE PARALLEL TO RUNNING RAIL.
 9. SPLICE PLATES FABRICATED FROM ROLLED BARS OF MILD STEEL ASTM A36.

6'-0" CAST END APPROACH
SCALE: 3/4" = 1'-0"



6'-0" END APPROACH SPLICE ASSEMBLY
SCALE: 1/2" = 1"



DATE	DESCRIPTION	1	6/24/2013	NOTE 9	DIRECTOR-POWER SYSTEMS	ASST CHIEF ENGINEER	SUPERVISOR-POWER DESIGN
------	-------------	---	-----------	--------	------------------------	---------------------	-------------------------



6'-0" CAST END APPROACH
SLICE PLATE AND BOLT

DATE	10/13/89
SCALE	NONE
SHEET	1 OF 1
DRAWING #	STD-303