

Figure 3: A clamshell appearance is evident on one side of the fracture surface on the threaded portion of the cavity.

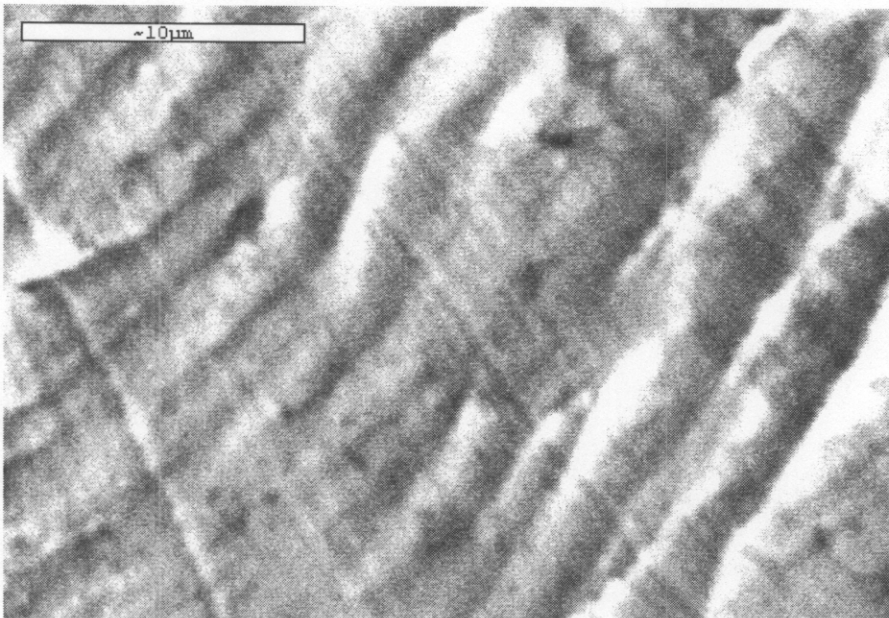


Figure 4: Fatigue striations are visible across the thickness of the wall at the area of the origin. (SEM photo at 4000X)

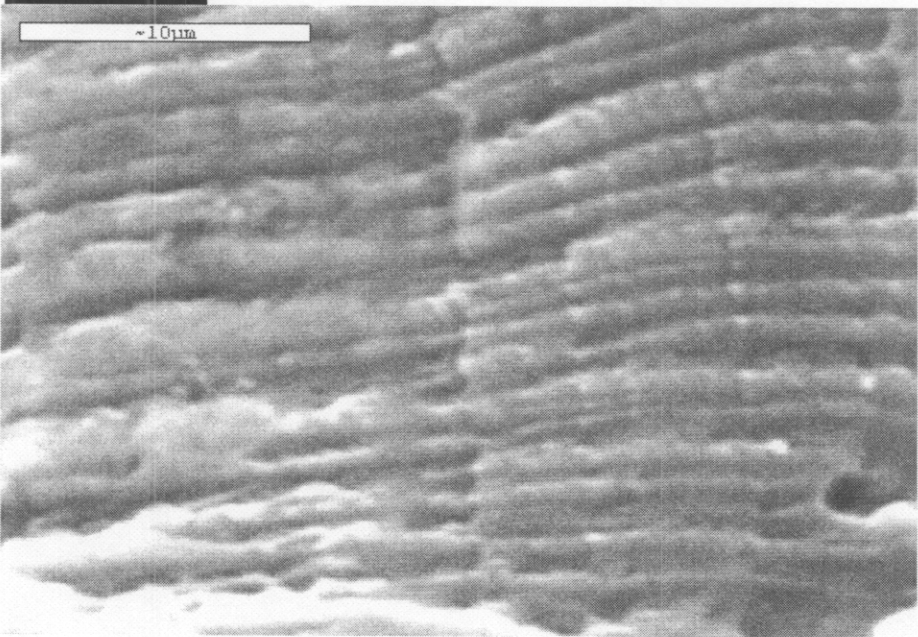


Figure 5: *Fatigue striations at a location near the outside surface of the manifold (SEM photo)*

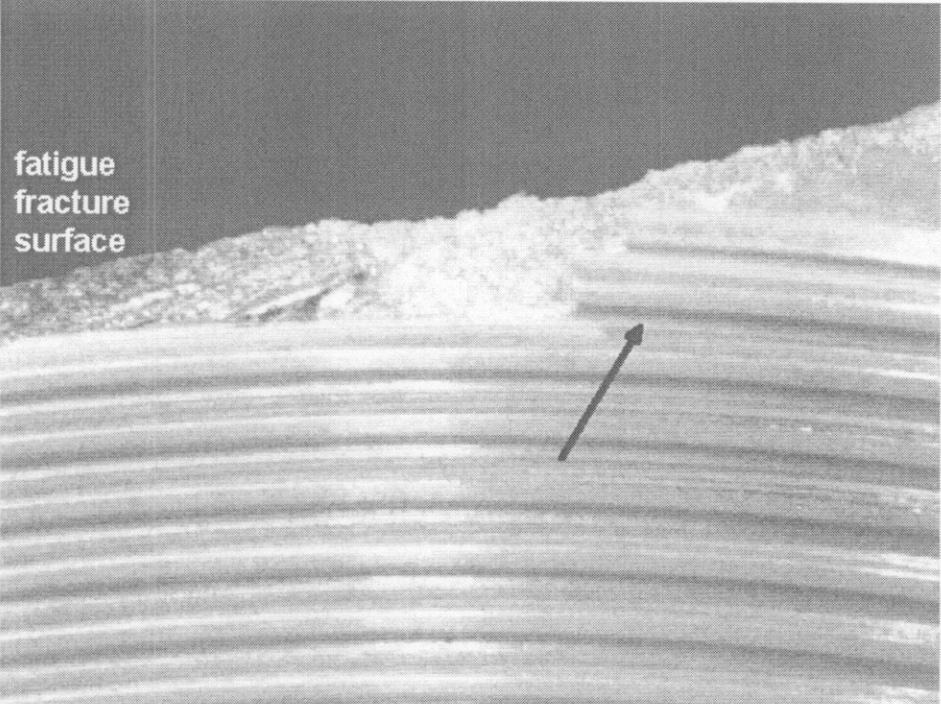


Figure 6: *The arrow locates the thread root radius of the first full thread. The fatigue fracture originated at the radius.*

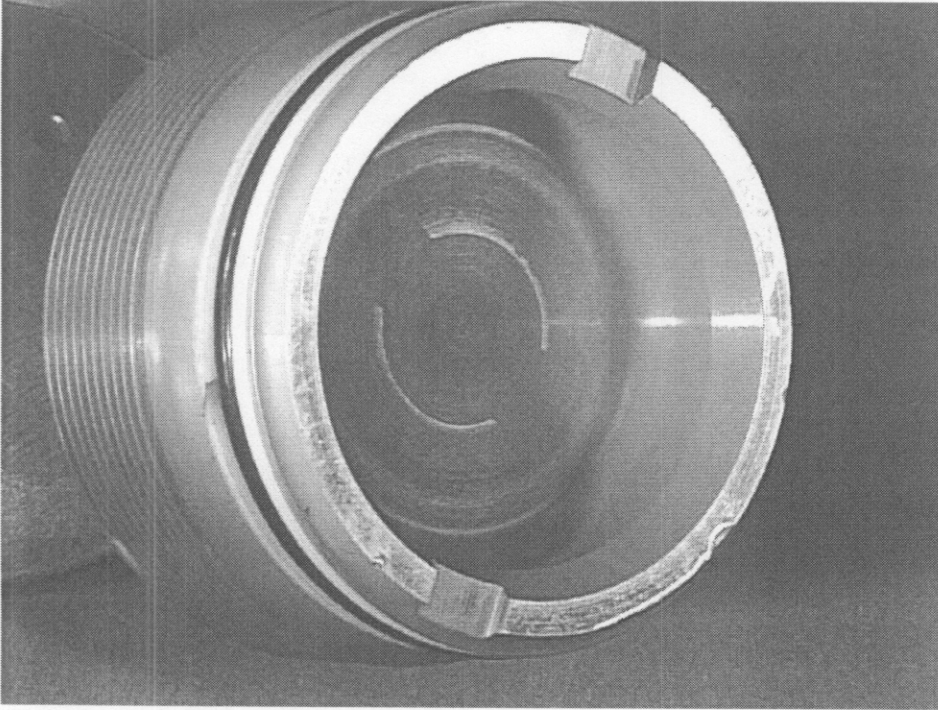


Figure 7: *Viewing the cap from the broken end. Witness marks from the piston are visible on the ID.*

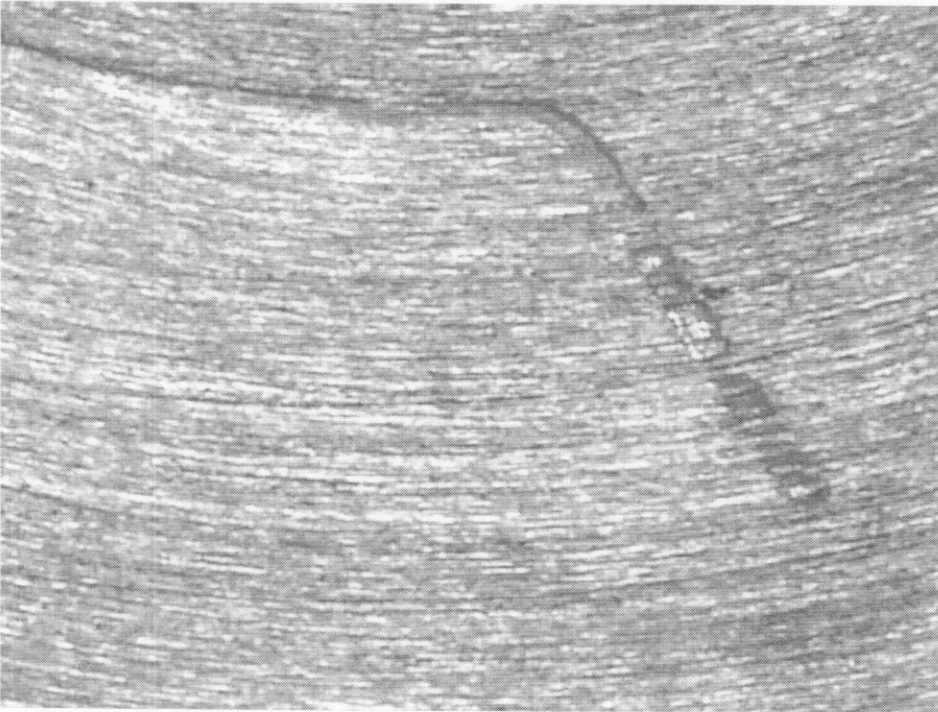


Figure 8: *A view of the witness marks at higher magnification.*