

## **APPENDIX H**

### **MIDDLE RUDDER SERVO CONTROL DISASSEMBLY PHOTOS**

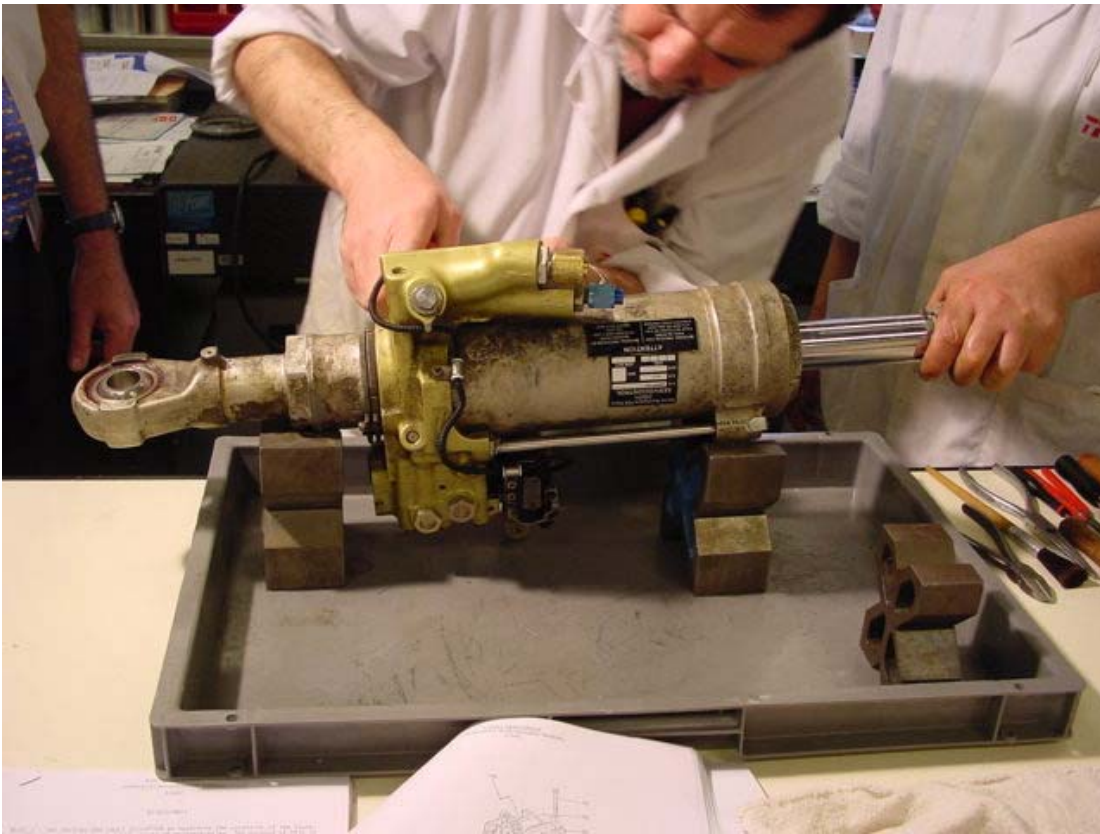


Figure 1. Middle Rudder Servo Control.

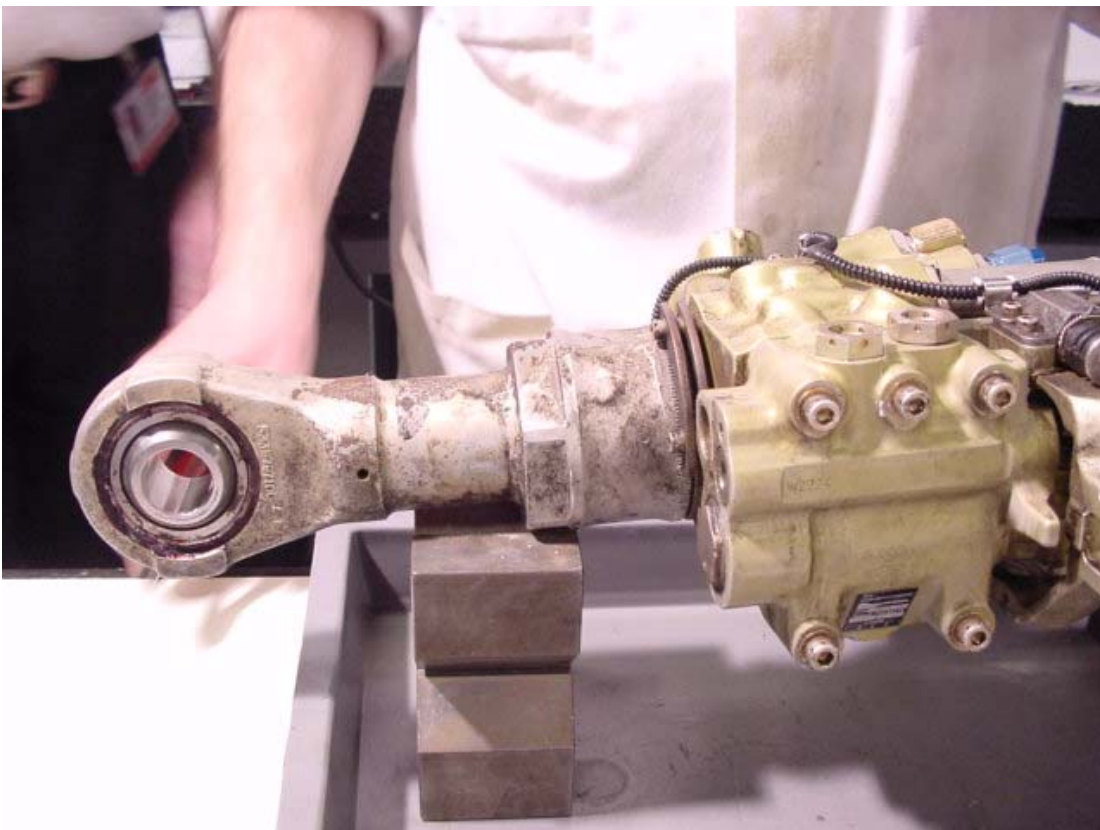


Figure 2. Fixed Rod End.

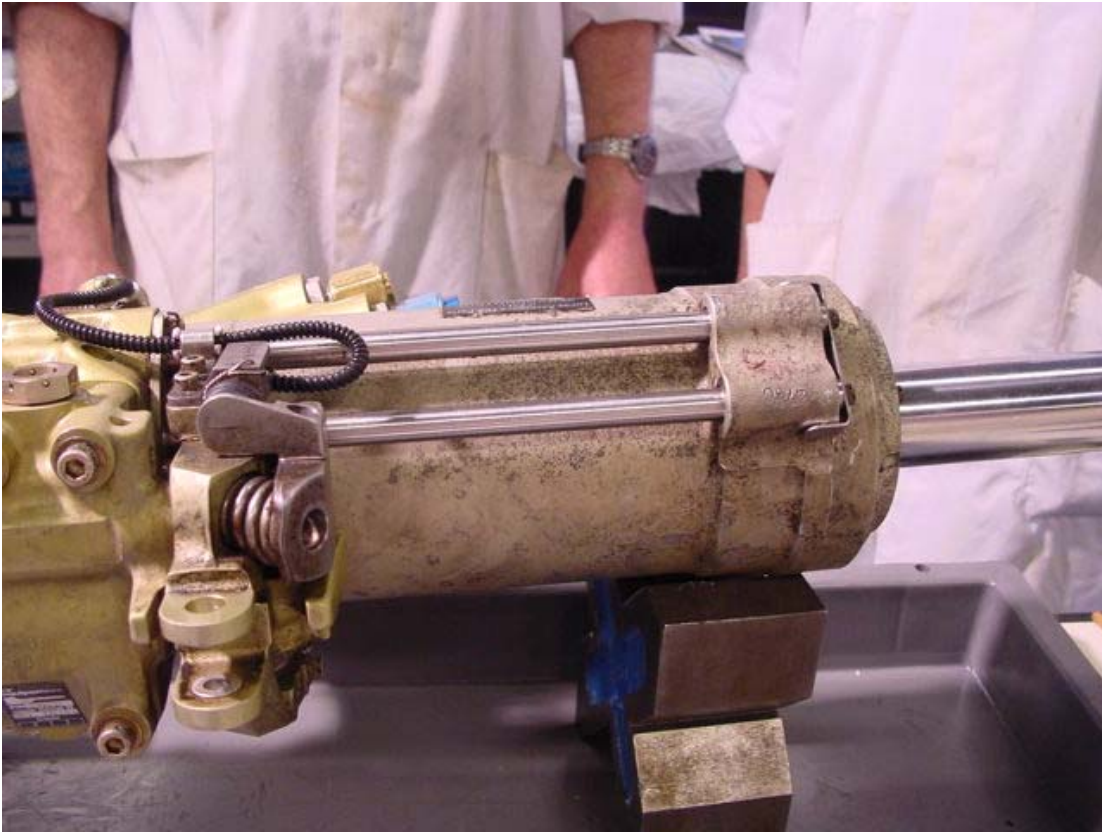


Figure 3. Input Lever, Jack Body, and Transfer Tubes.



Figure 4. Piston Rod End.



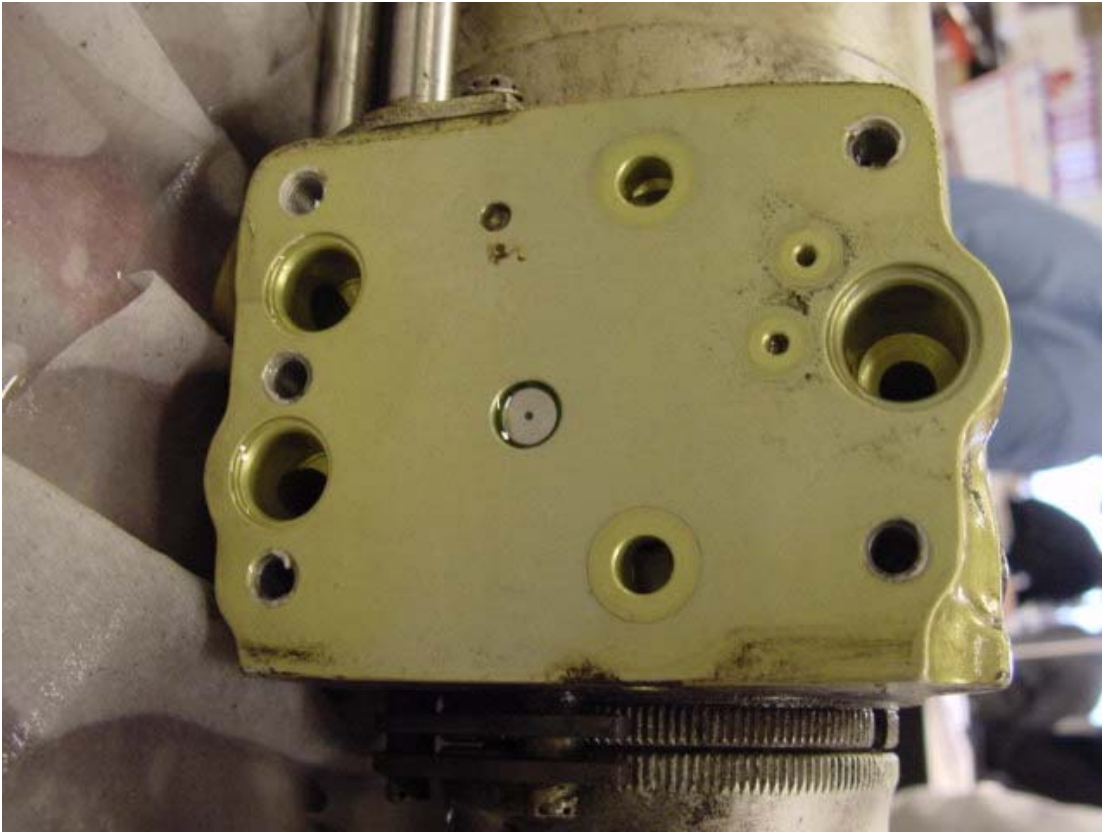


Figure 5. Hydraulic Support Assembly.

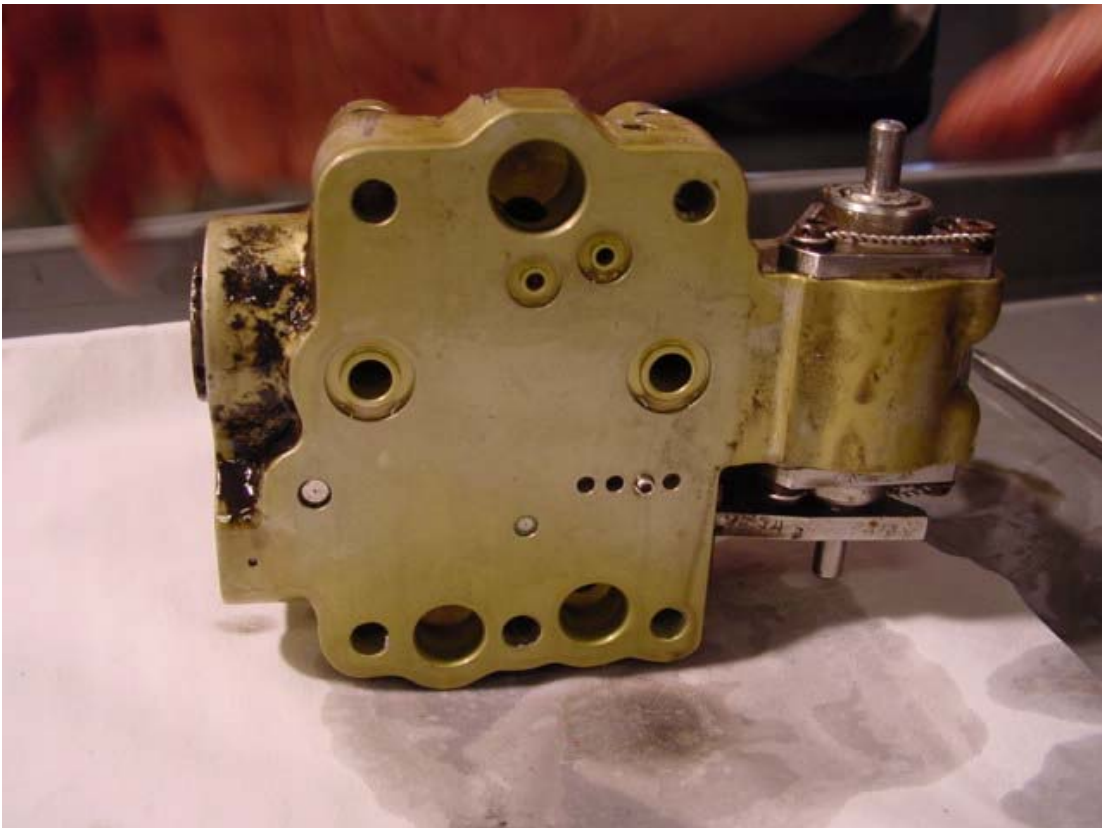


Figure 6. Control Valve Block Assembly



Figure 7. Test Finger Assembly.



Figure 8. Bypass Valve Piston Assembly



Figure 9. Bypass Valve Cylinder Sleeve.



Figure 10. Remote Control Lever and Bearing Assembly





Figure 11. Remote Control Lever with Drive Pin Removed.



Figure 12. Main Control Valve Spool.



Figure 13. Main Control Valve Cylinder Sleeve.



Figure 14. Piston Rod and with Bearing and Seal Assembly.





Figure 15. Piston Rod with Bearing and Seal Assembly Removed.



Figure 16. Piston Rod.



Figure 17. Fixed Rod End Bearing and Seal Assembly.

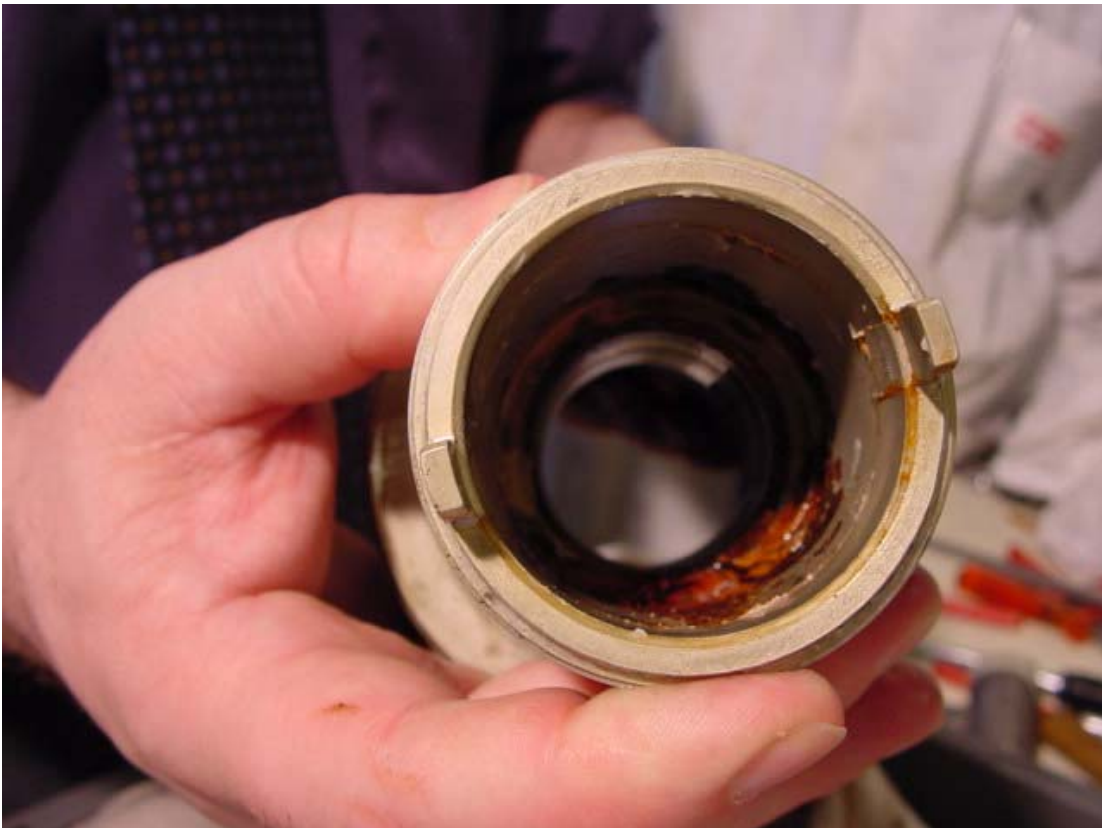


Figure 18. Fixed Rod End Retainer.