

APPENDIX A

Photographs



Figure 1, PCA #1, as received in EQA



Figure 2, PCA #1, as received in EQA

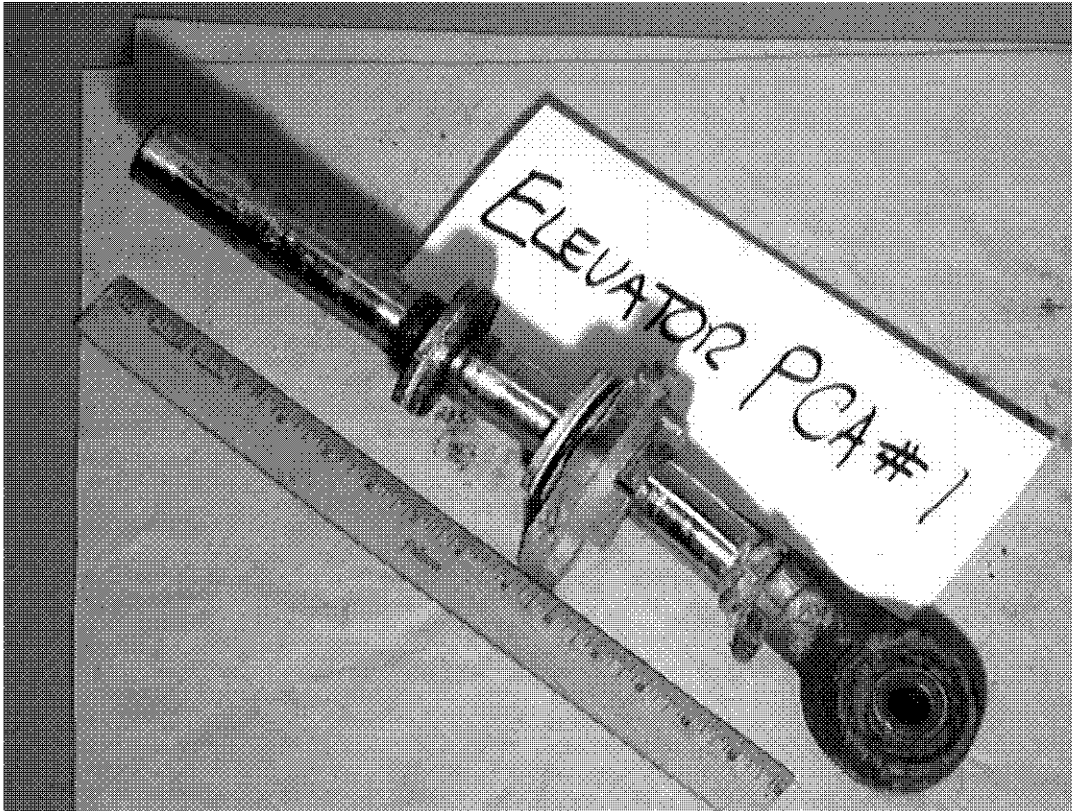


Figure 3, PCA #1, Piston and seal after disassembly

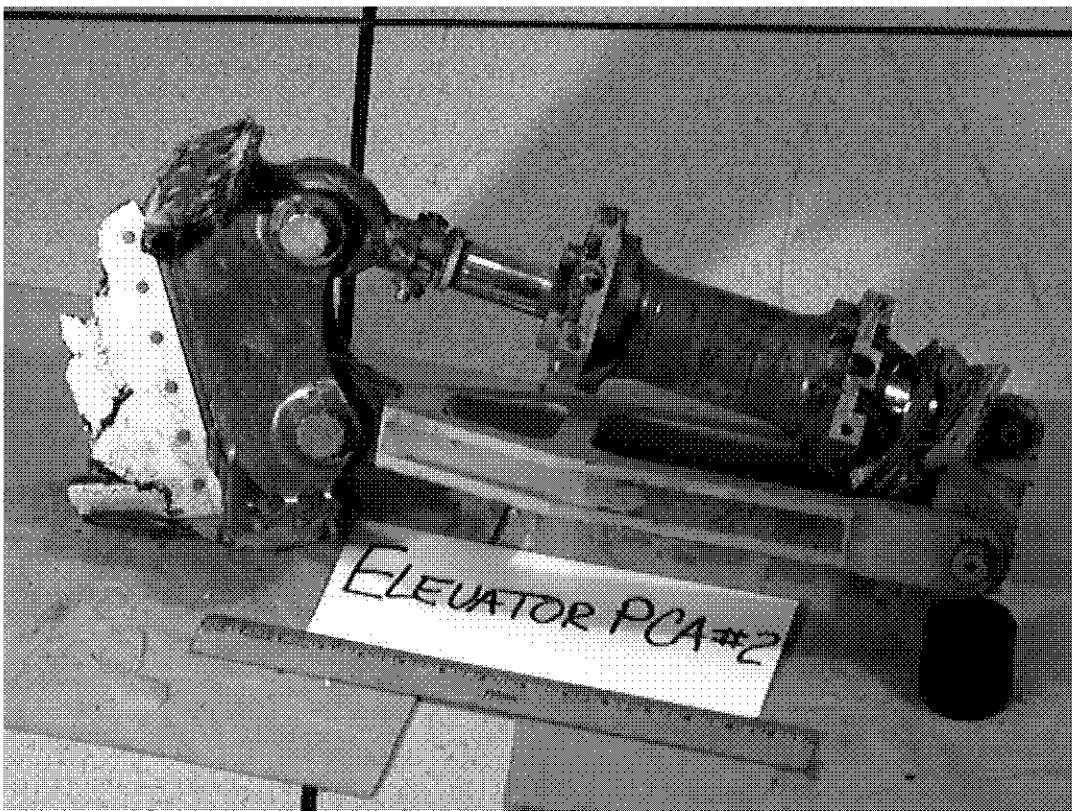


Figure 4, PCA #2, as received in EQA

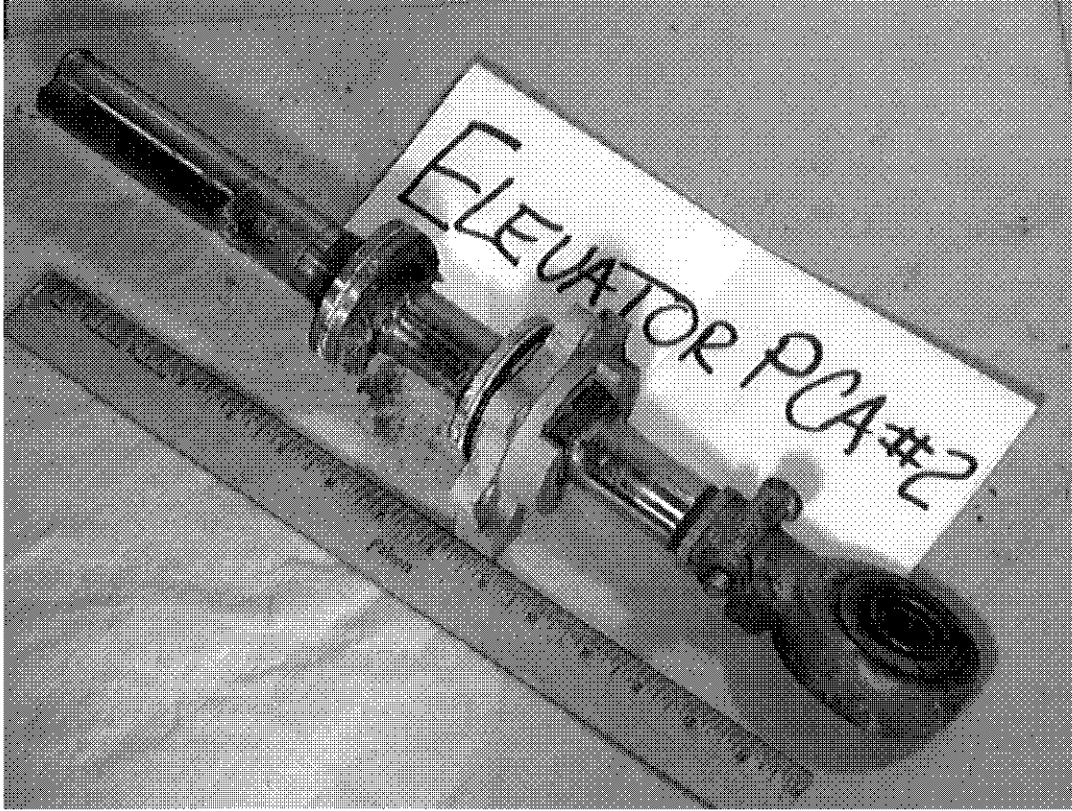


Figure 5, PCA #2, Piston and seal after disassembly

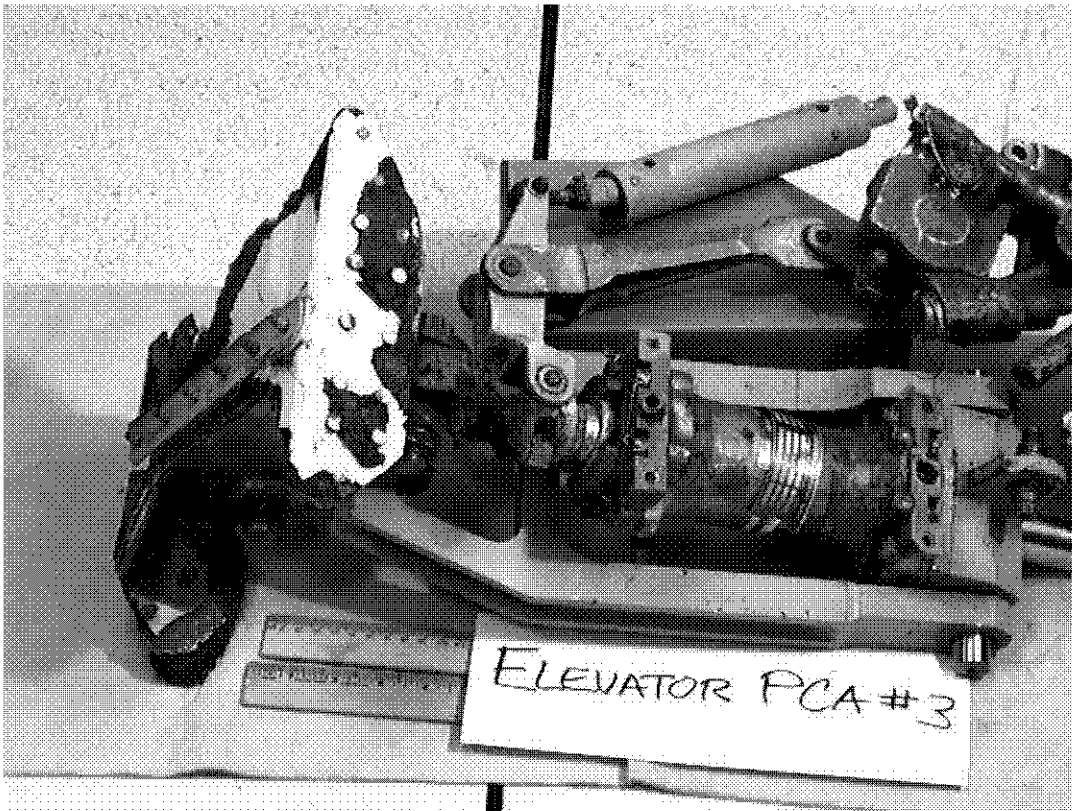


Figure 6, PCA #3, as received in EQA Laboratory

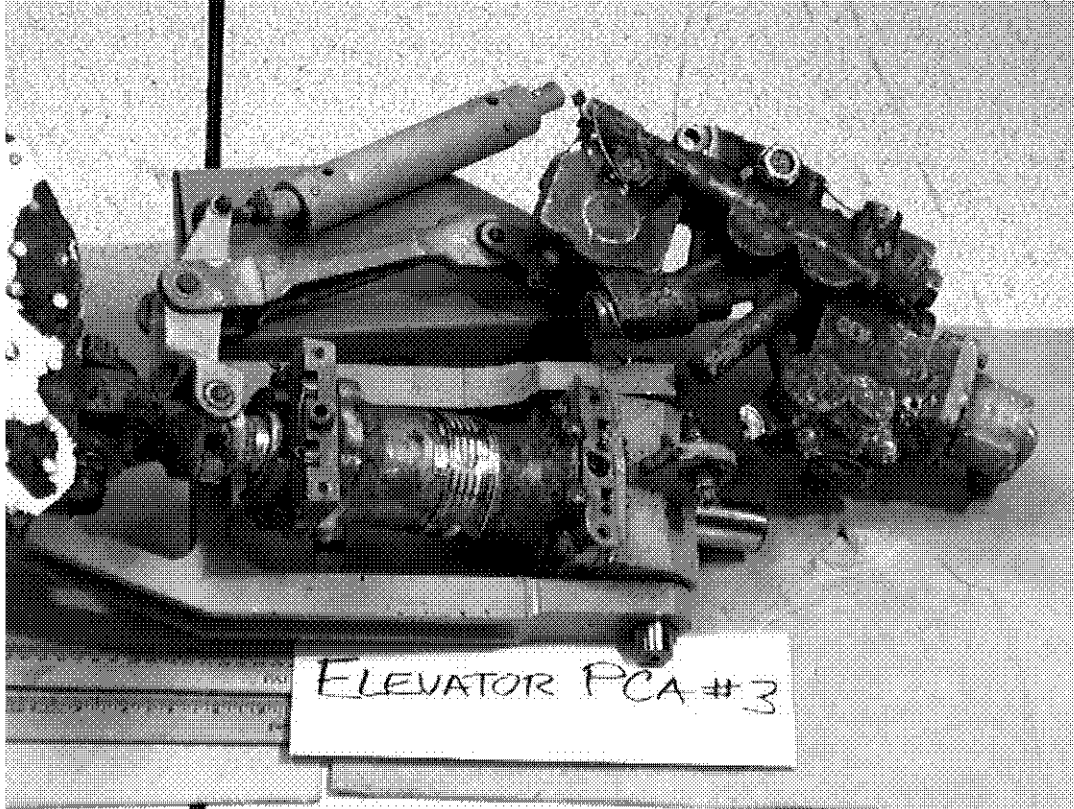


Figure 7, PCA #3, as received in EQA Laboratory

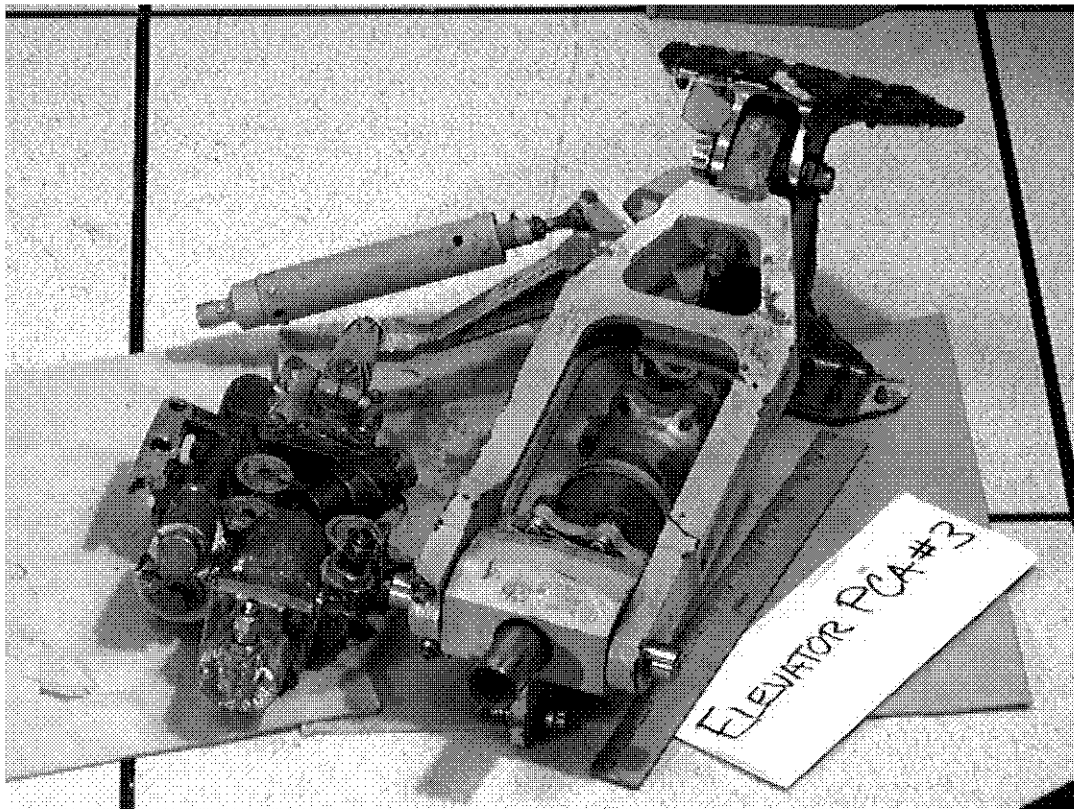


Figure 8, PCA #3, as received in EQA Laboratory

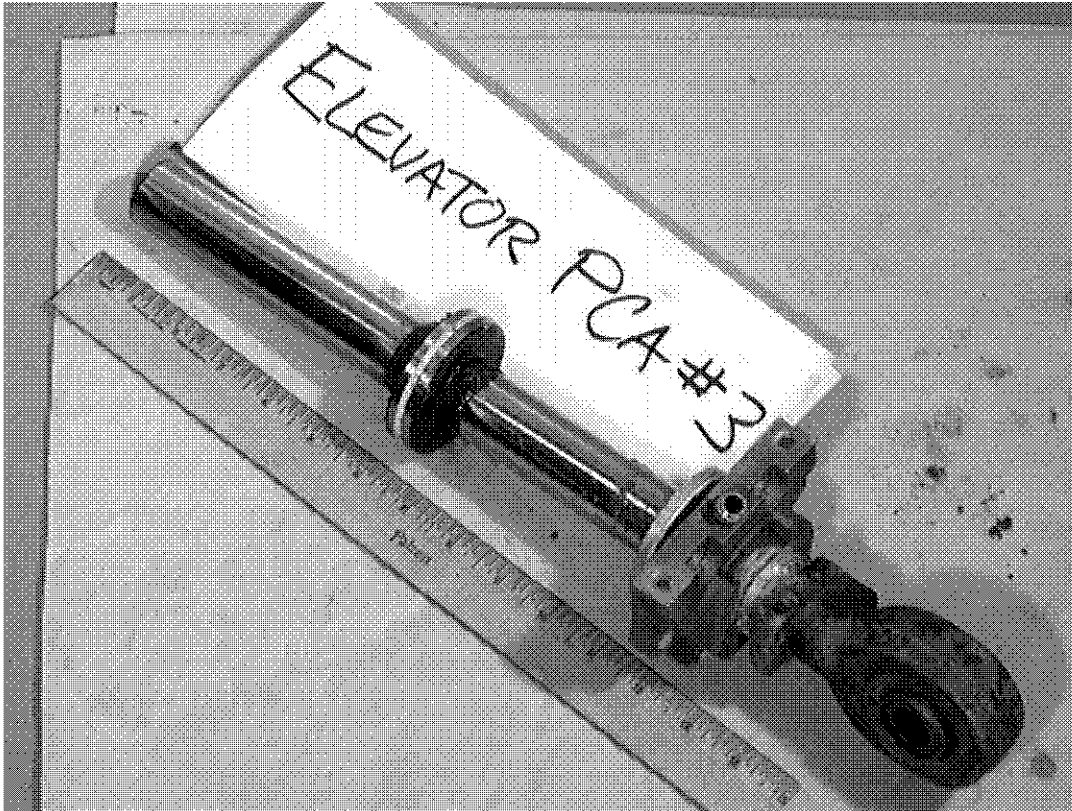


Figure 9, PCA #3, Piston and seal after disassembly

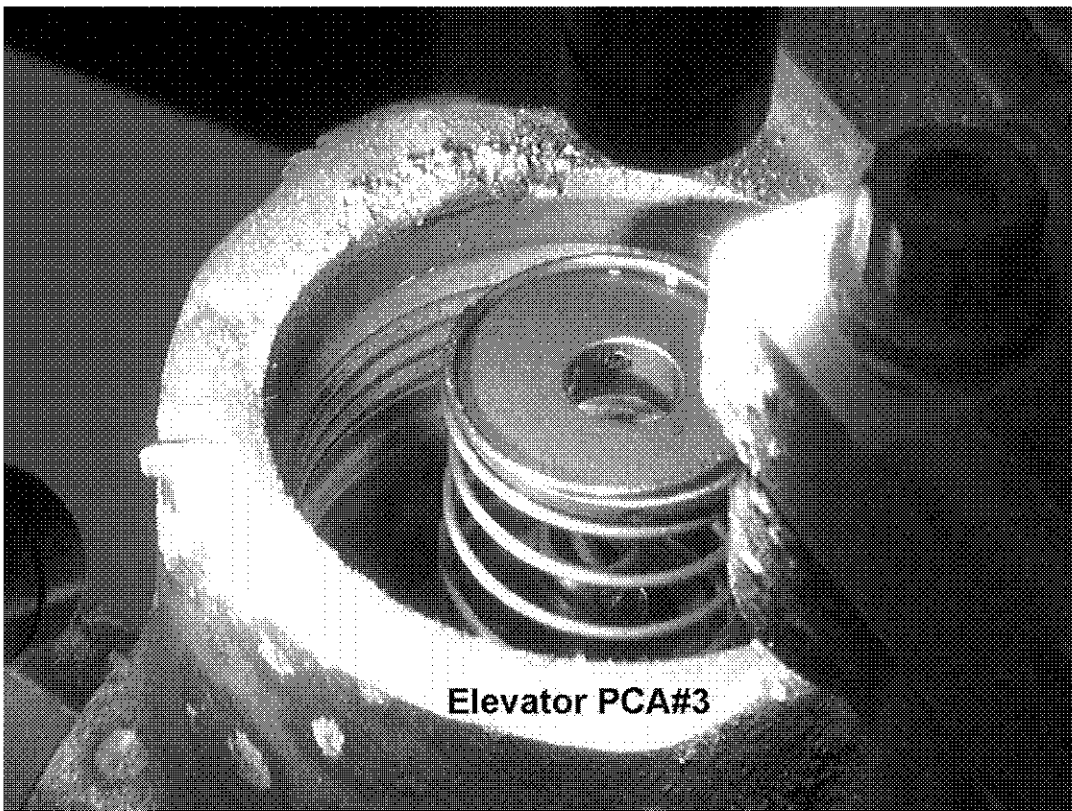


Figure 10, PCA #3, Bias Spring, Retainer Cap and Shear Pin

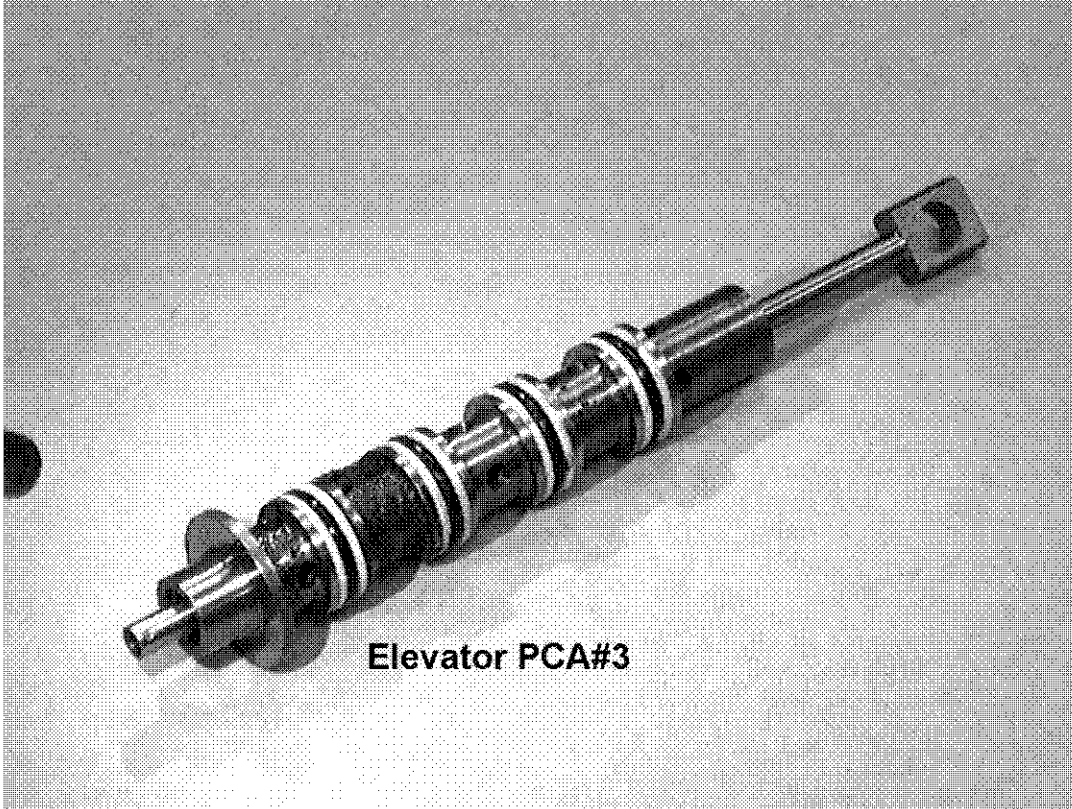


Figure 11, PCA #3, Servovalve Slide and Spool

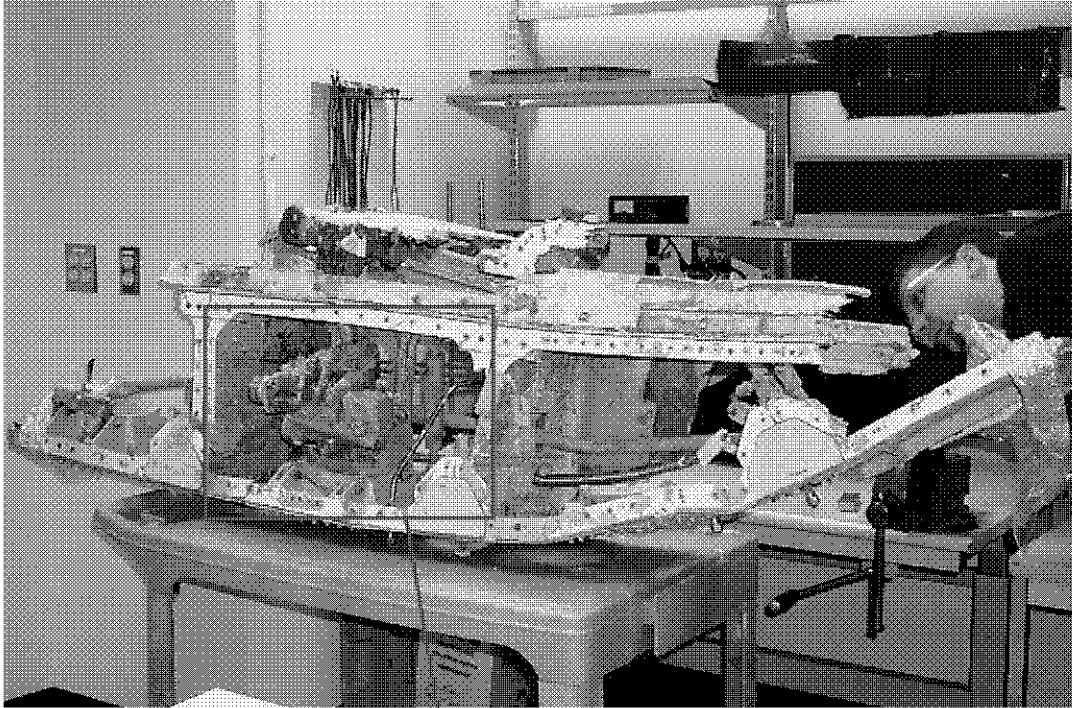


Figure 12, Section containing PCA 4 as received in EQA Laboratory

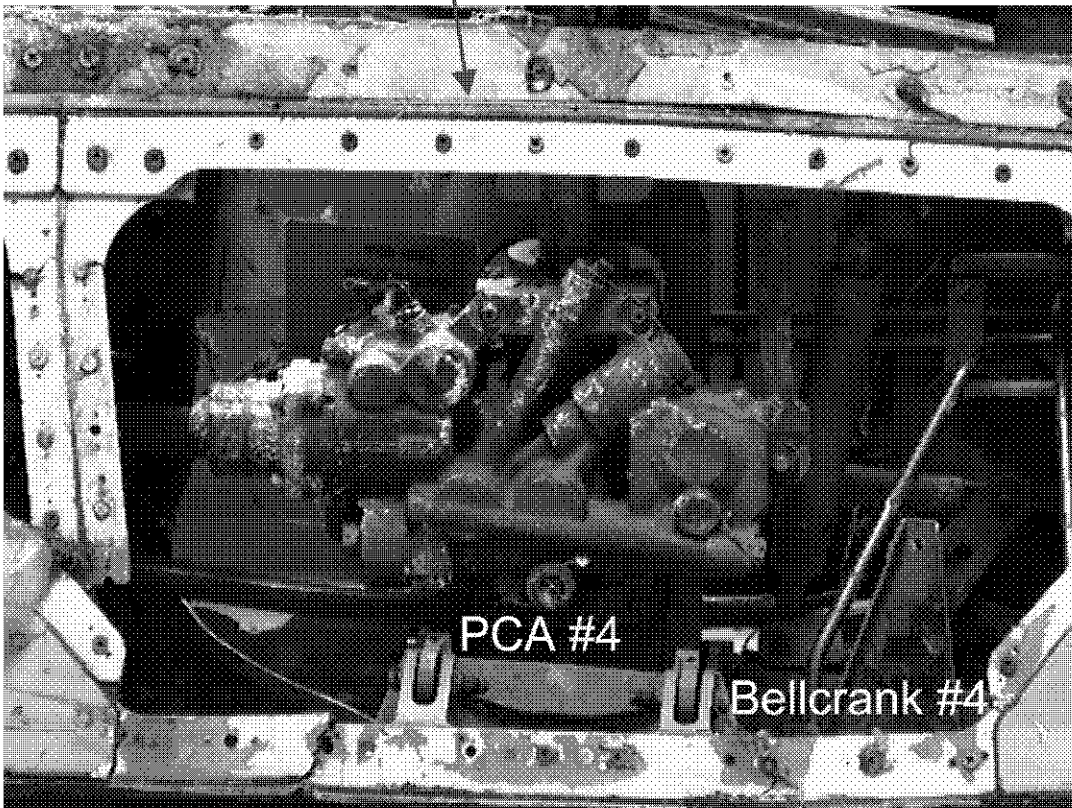


Figure 13, PCA #4, as received in EQA Laboratory

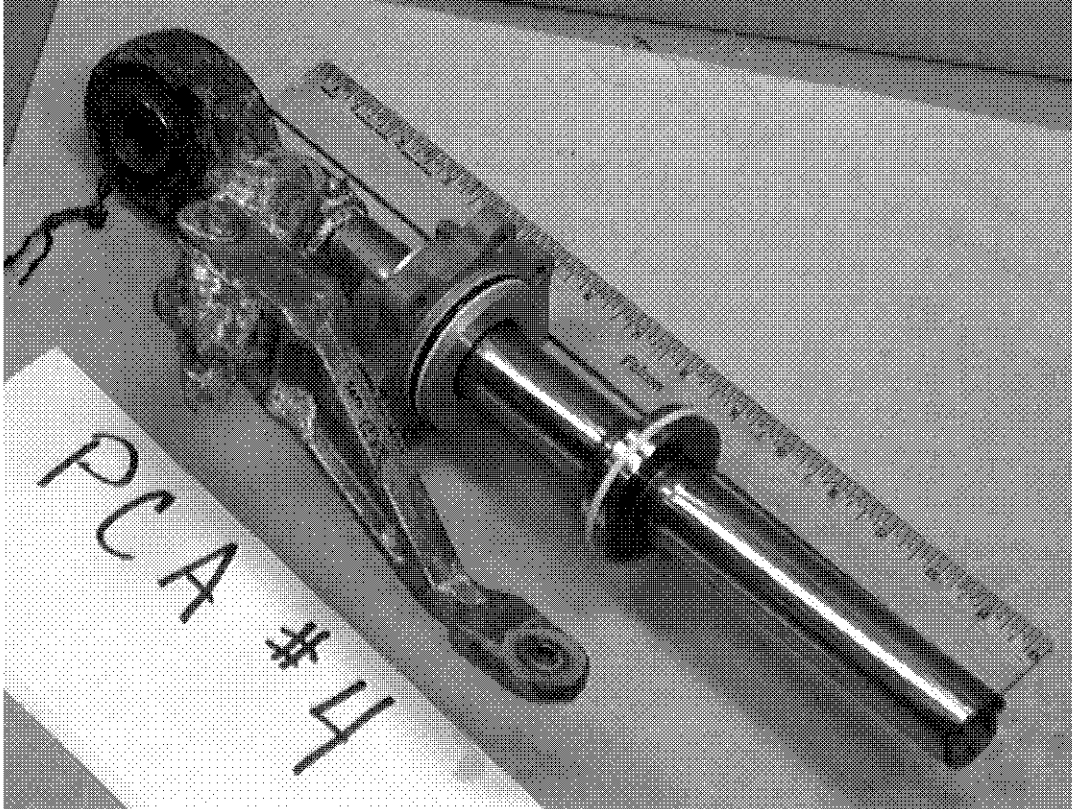


Figure 14, PCA #4, Piston and seal after disassembly

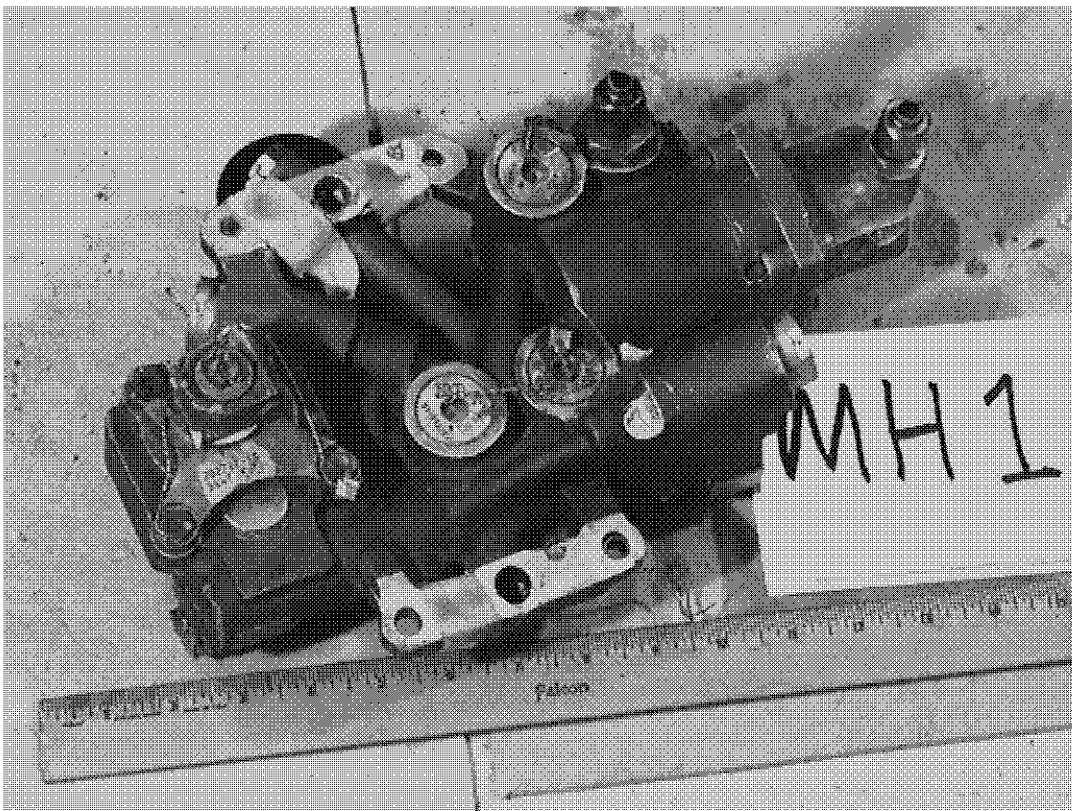


Figure 15, MH #1, as received in EQA Laboratory

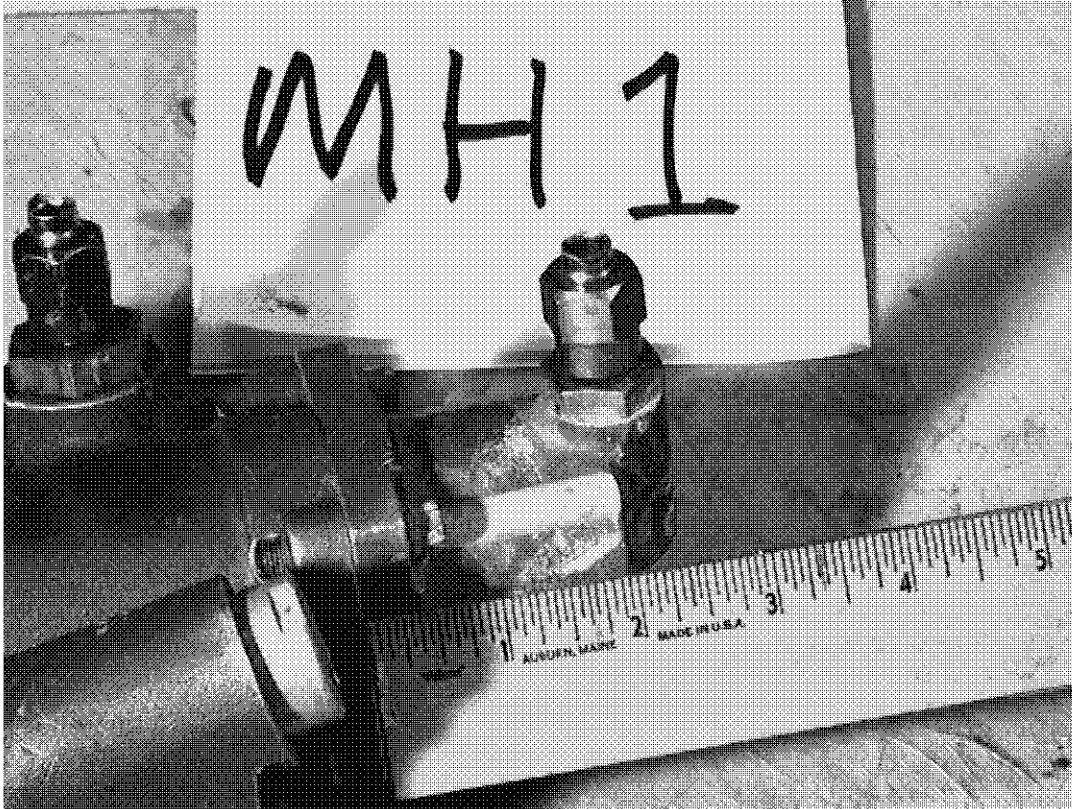


Figure 16, MH #1, as received in EQA Laboratory



Figure 17, MH #1, as received in EQA Laboratory



Figure 18, MH #1, Bias Spring, Spring Guide Retaining Cap, Servovalve Slide, & Spool



Figure 19, MH #1, Servovalve Slide and Spool



Figure 20, MH #2, as received in EQA Laboratory



Figure 21, MH #2, as received in EQA Laboratory

MH2 Input crank gland

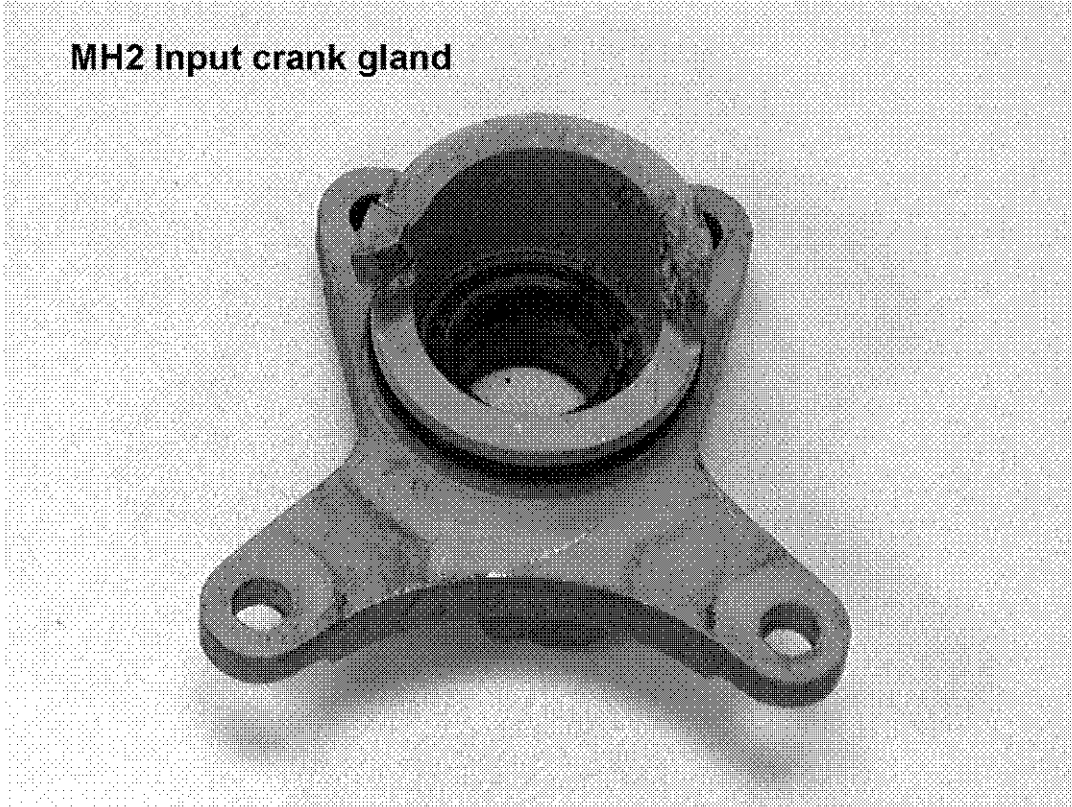


Figure 22, MH #2, Input Crank Gland – Note broken piece on left side

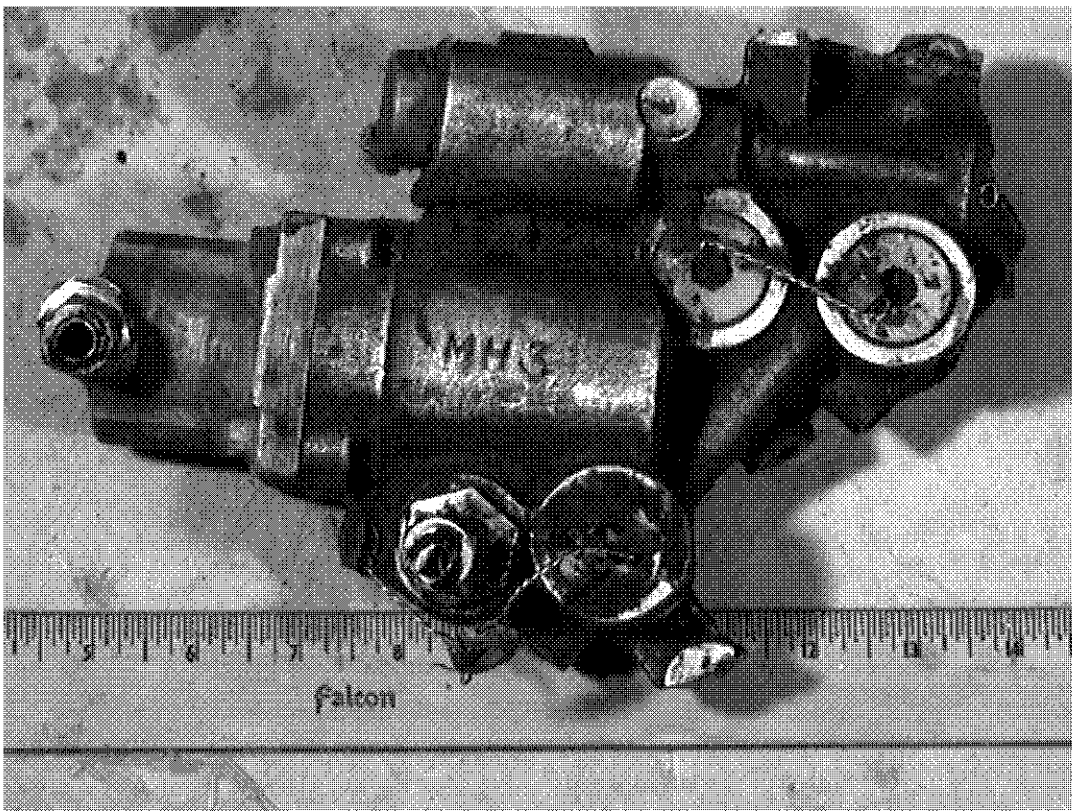


Figure 23, MH #3, as received in EQA Laboratory

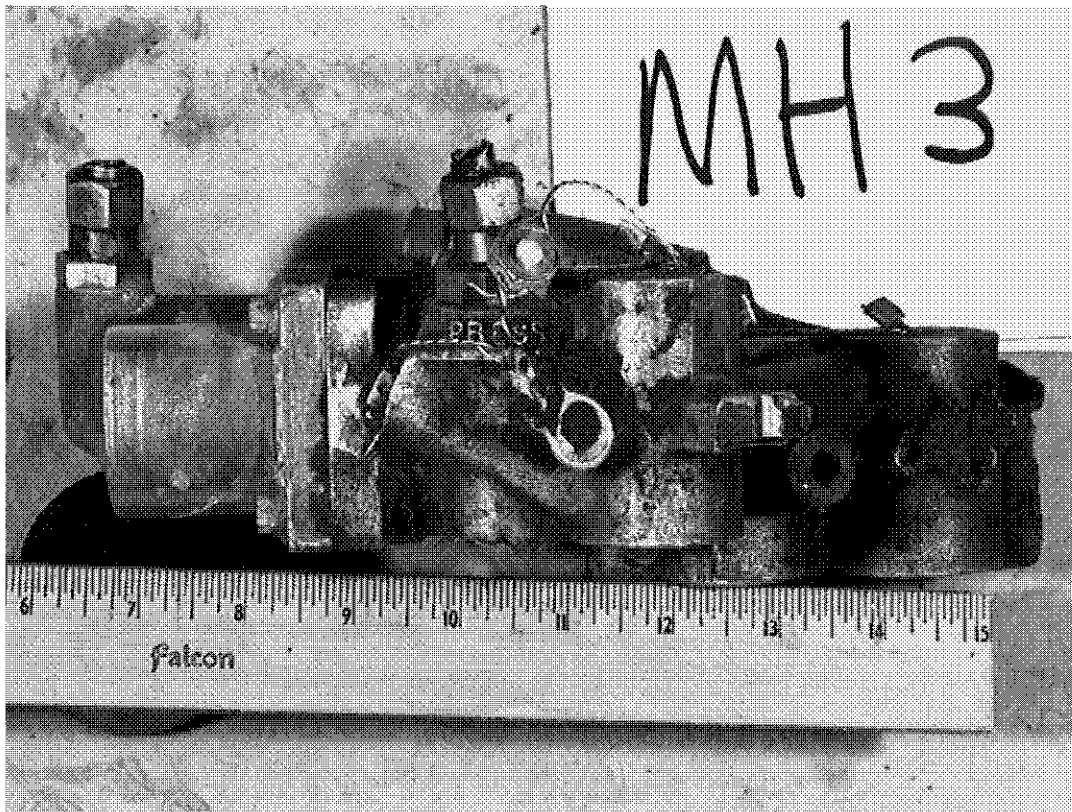


Figure 24, MH #3, as received in EQA

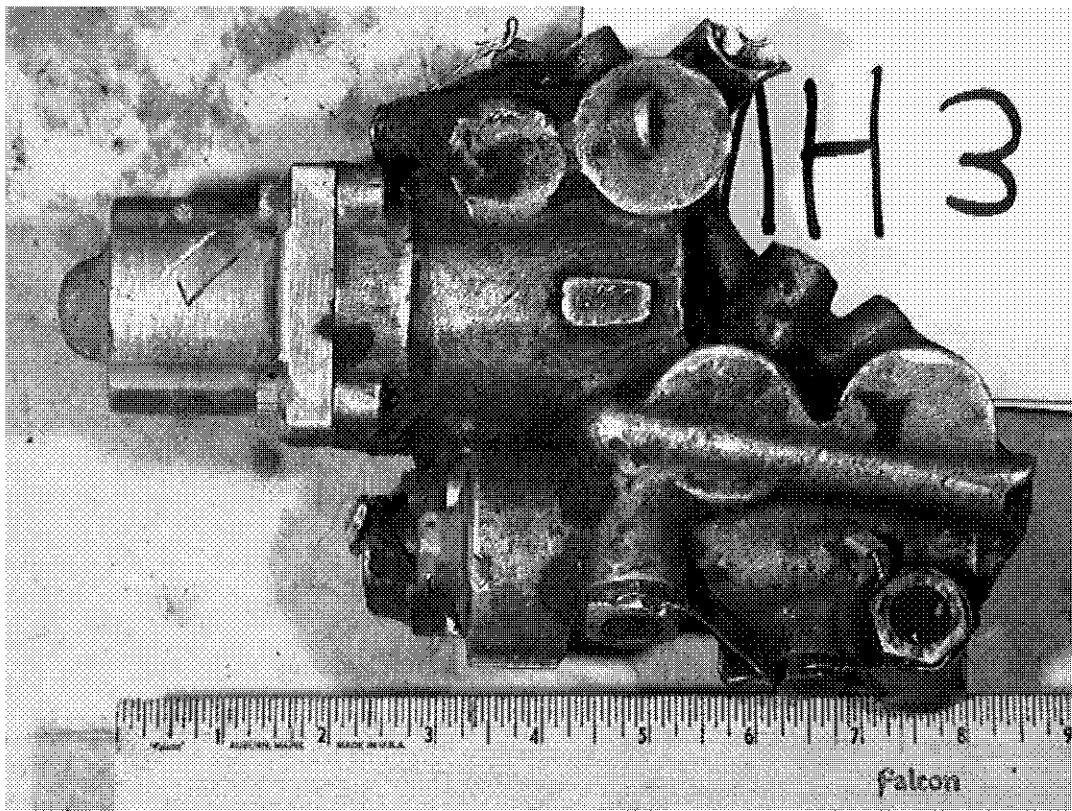


Figure 25, MH #3, as received in EQA Laboratory.



Figure 26, MH #3 compared with MH4, as received in EQA Laboratory

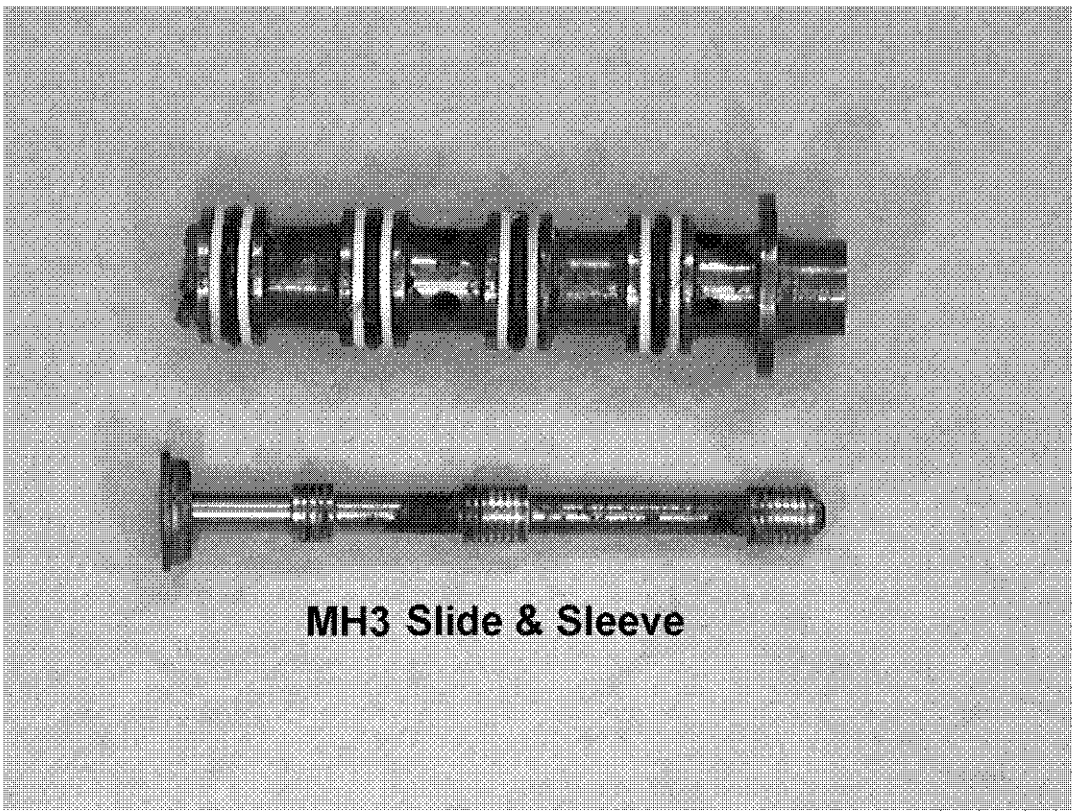


Figure 27, MH #3 Slide and Sleeve, as received in EQA Laboratory



Figure 28, MH #4, as received in EQA Laboratory

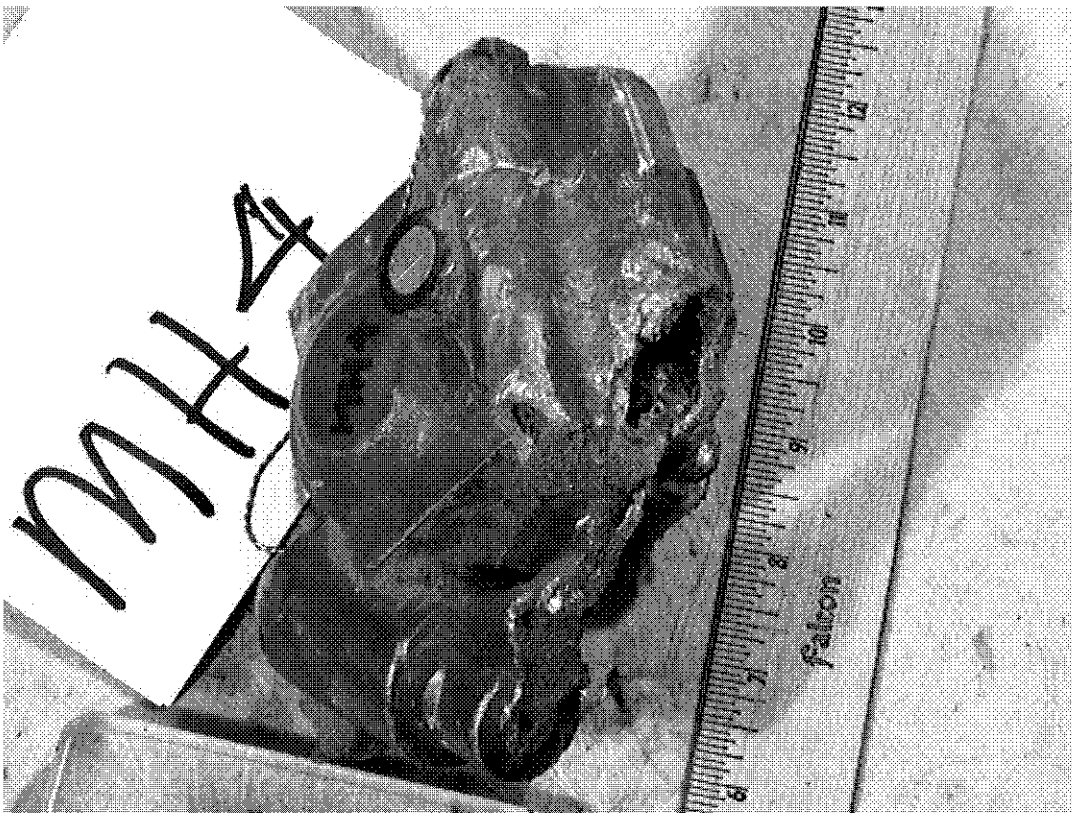


Figure 29, MH #4, as received in EQA Laboratory



Figure 30, Bellcrank #1, as received in EQA Laboratory



Figure 31, Bellcrank #1, as received in EQA Laboratory

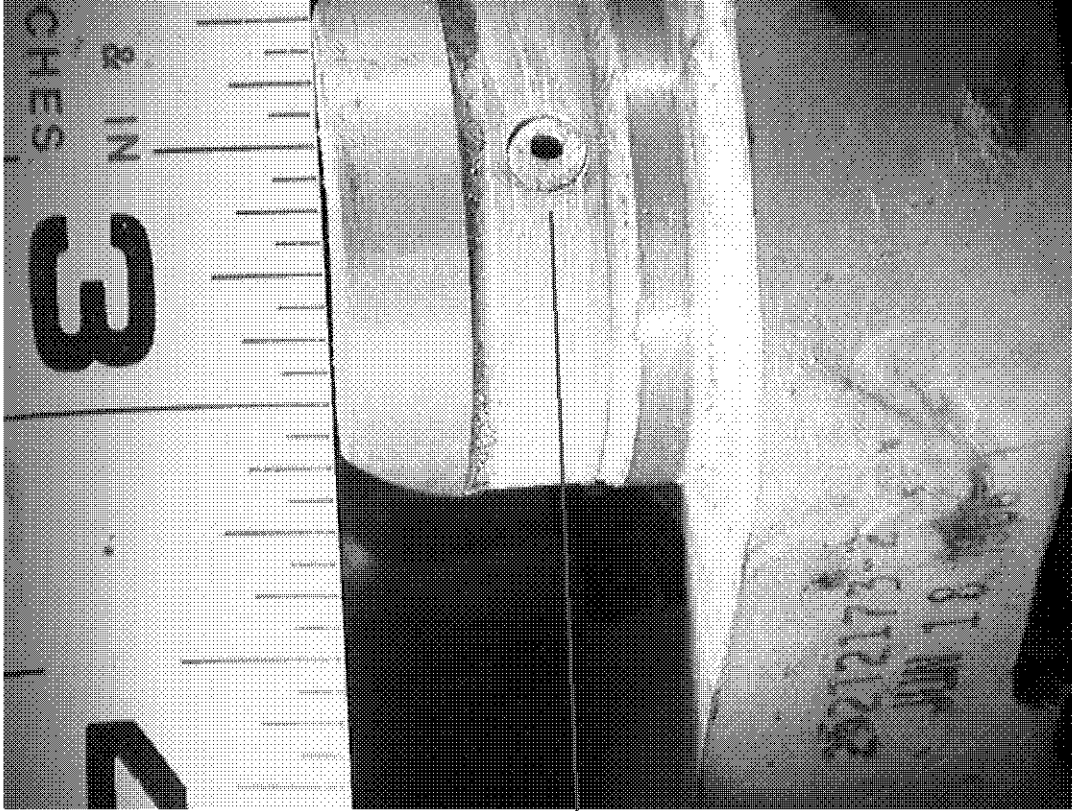


Figure 32, Bellcrank #1, sheared rivet

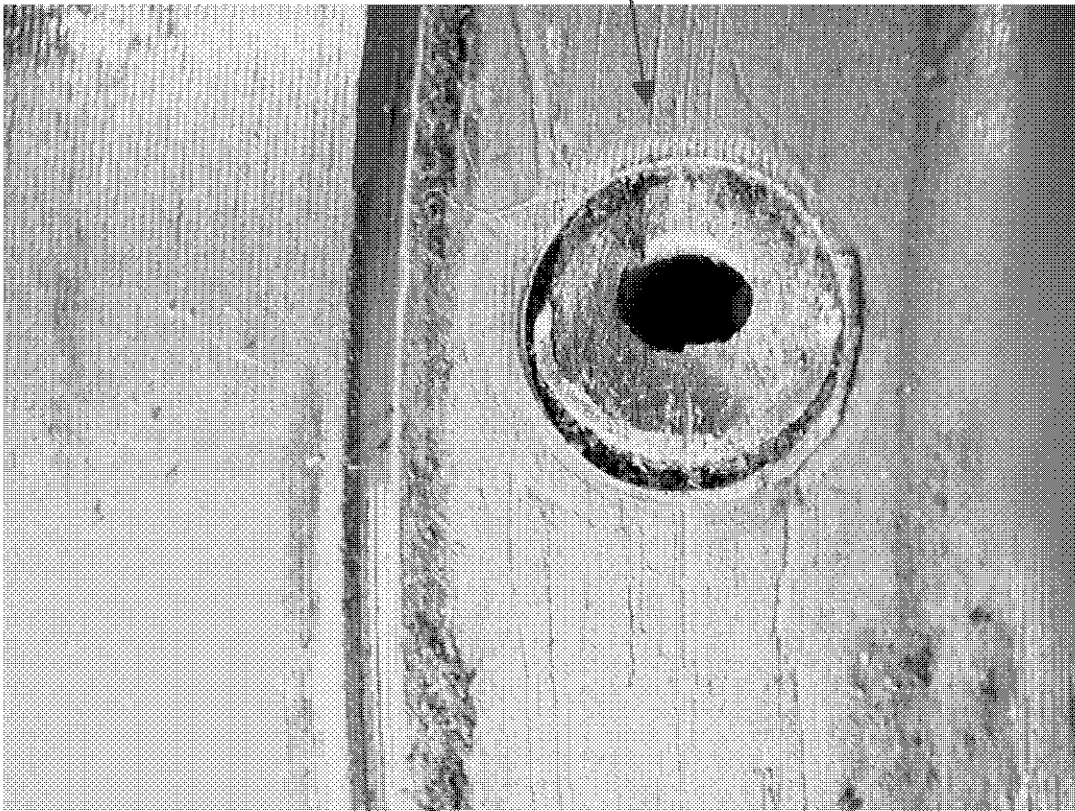
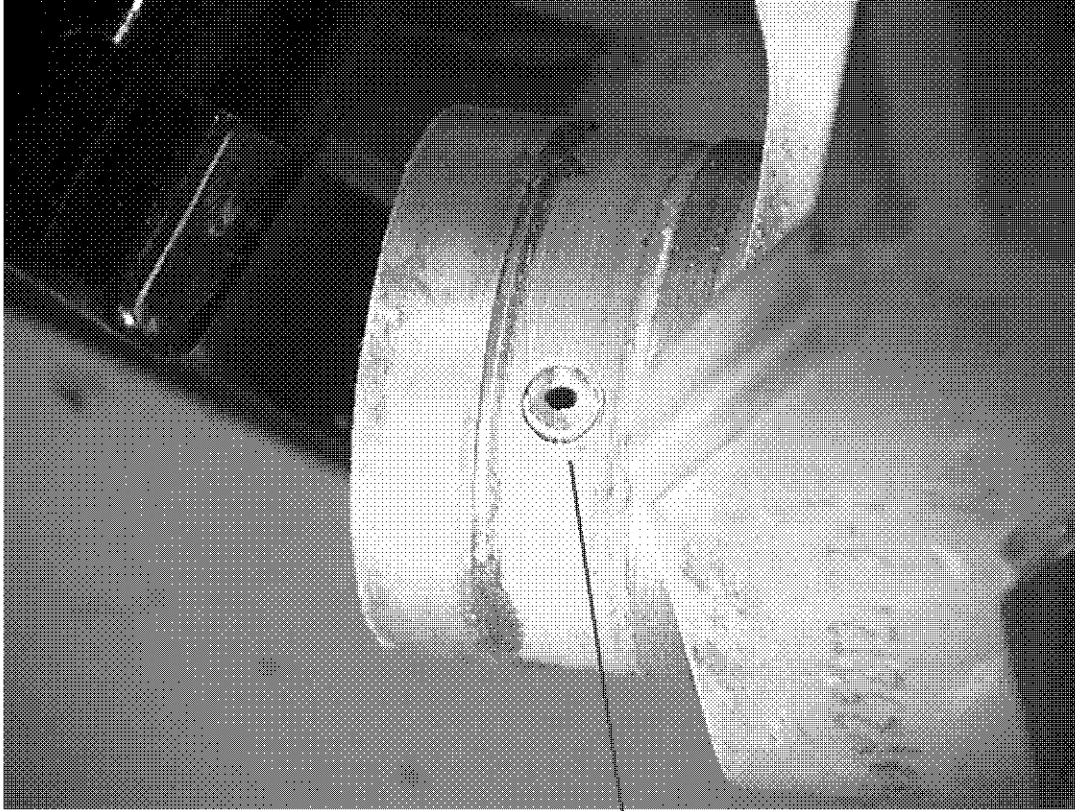


Figure 33, Bellcrank #1, sheared rivet

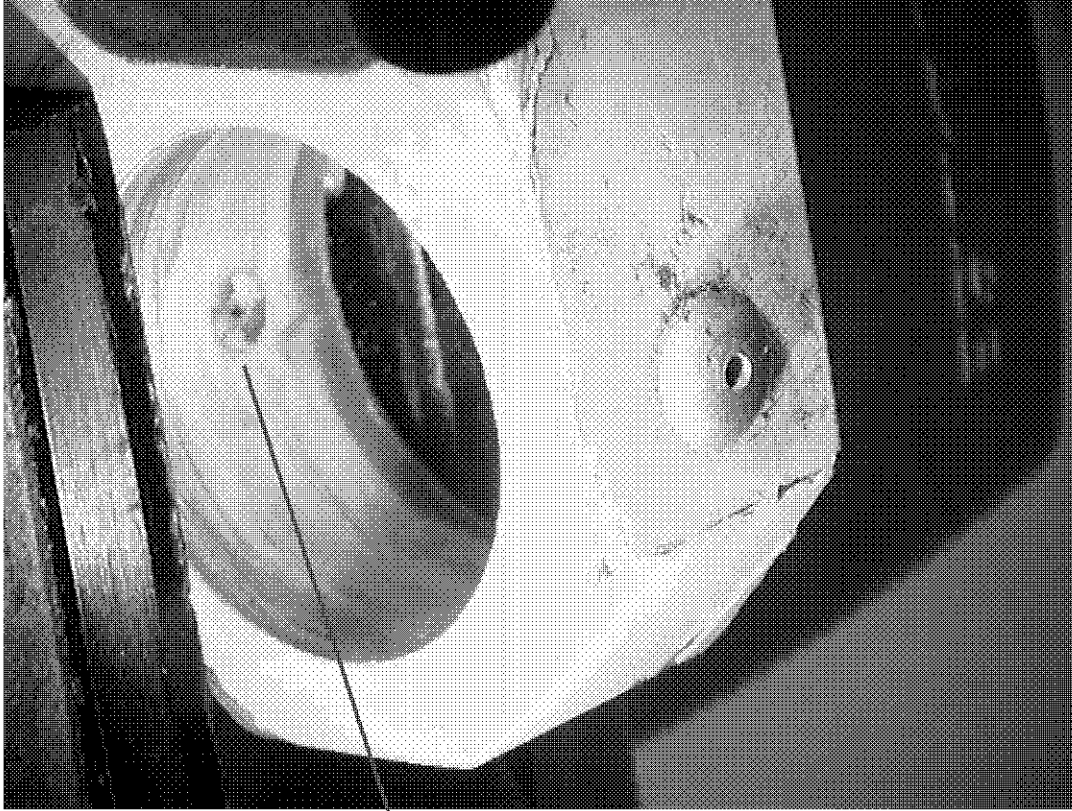


Figure 34, Bellcrank #1, sheared rivet

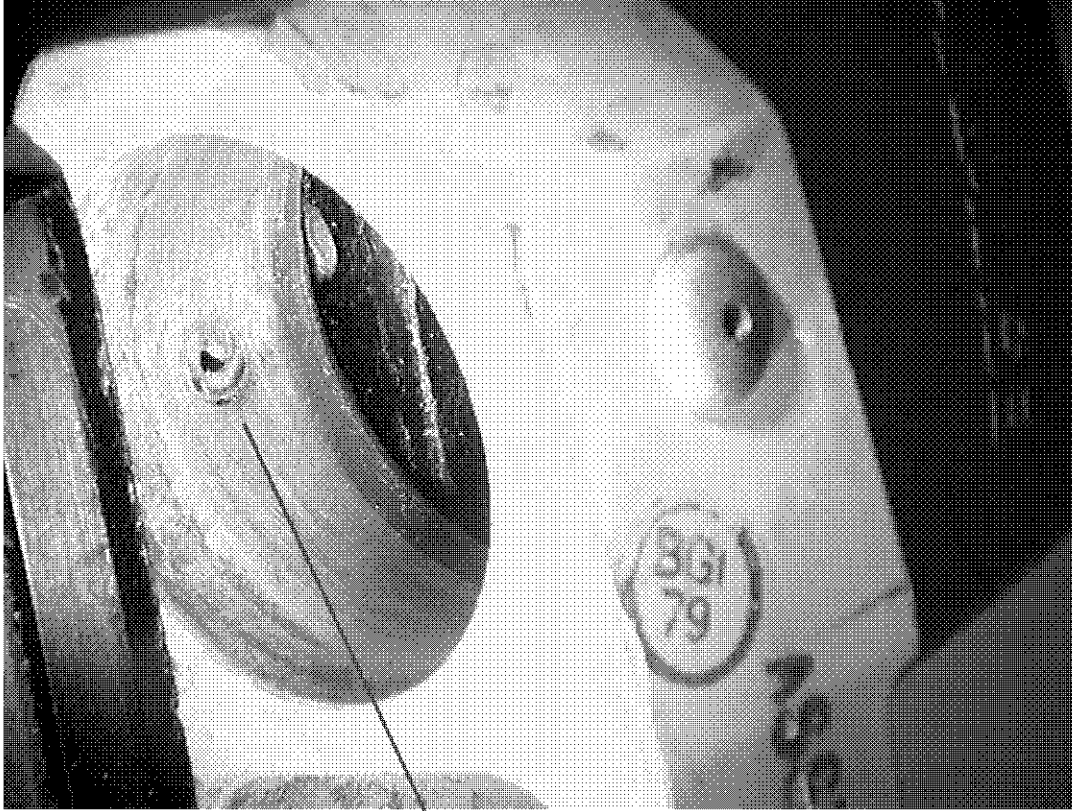


Figure 35 Bellcrank #1, sheared rivet



Figure 36, Bellcrank #2, as received in EQA Laboratory



Figure 37, Bellcrank #2, as received in EQA Laboratory

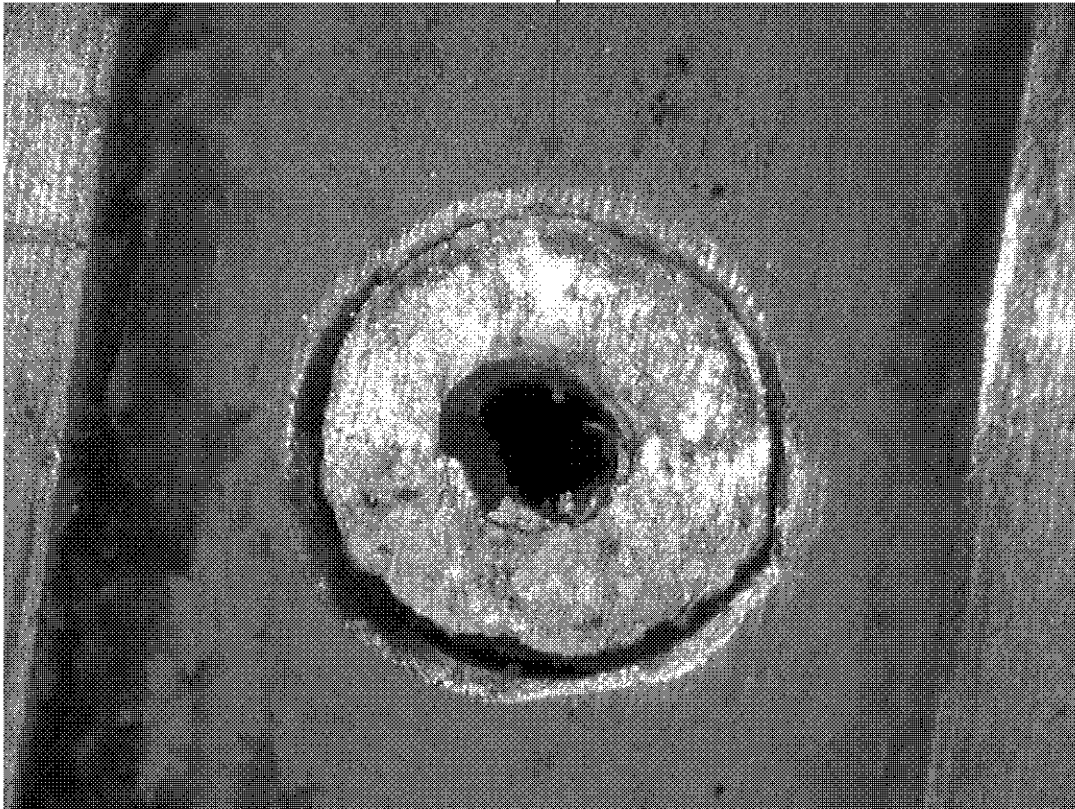
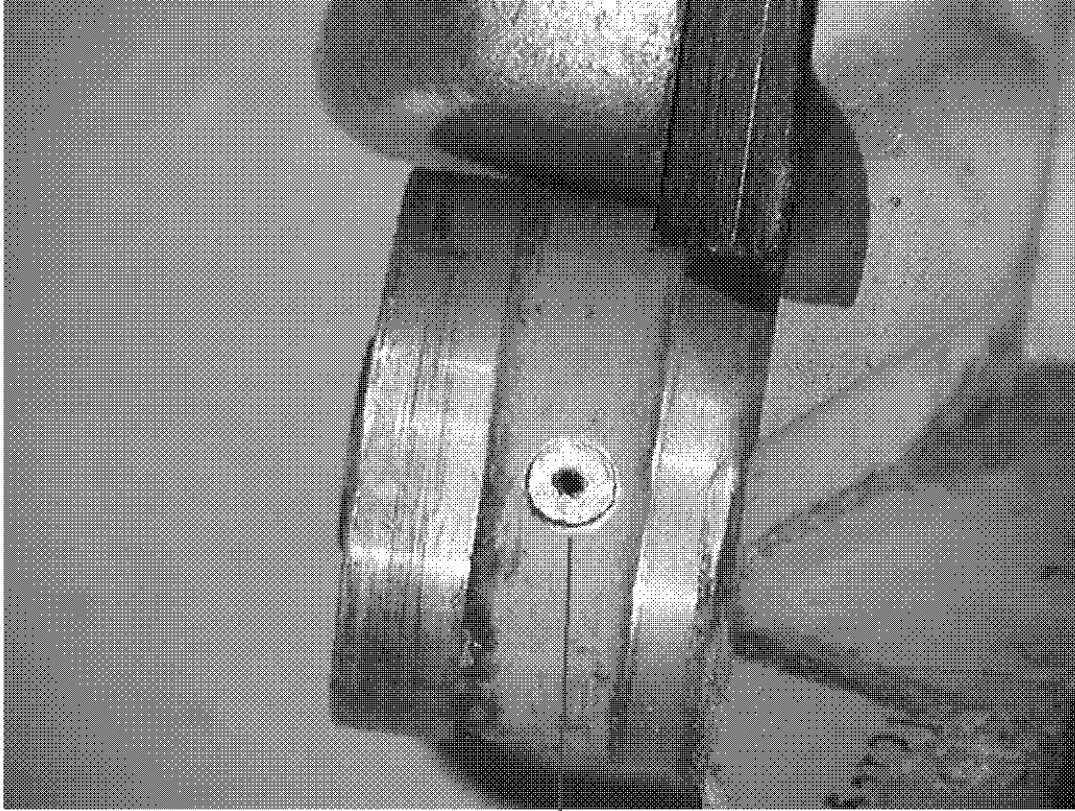


Figure 38, Bellcrank #2, sheared rivet

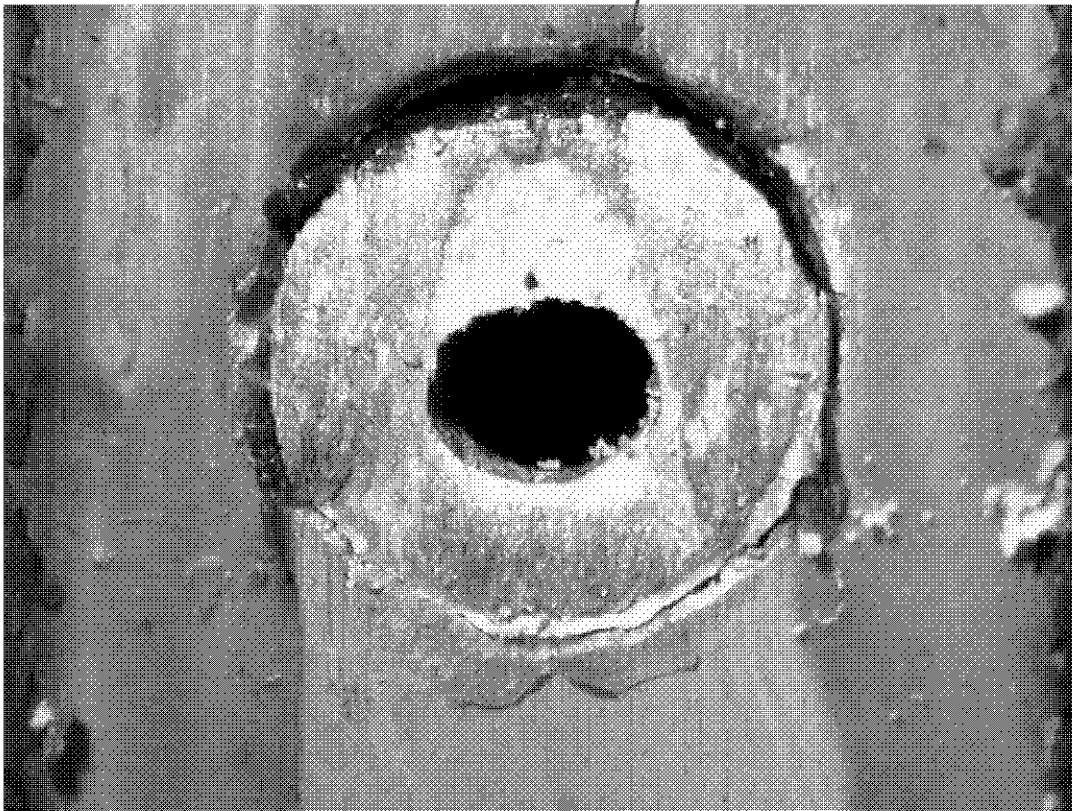
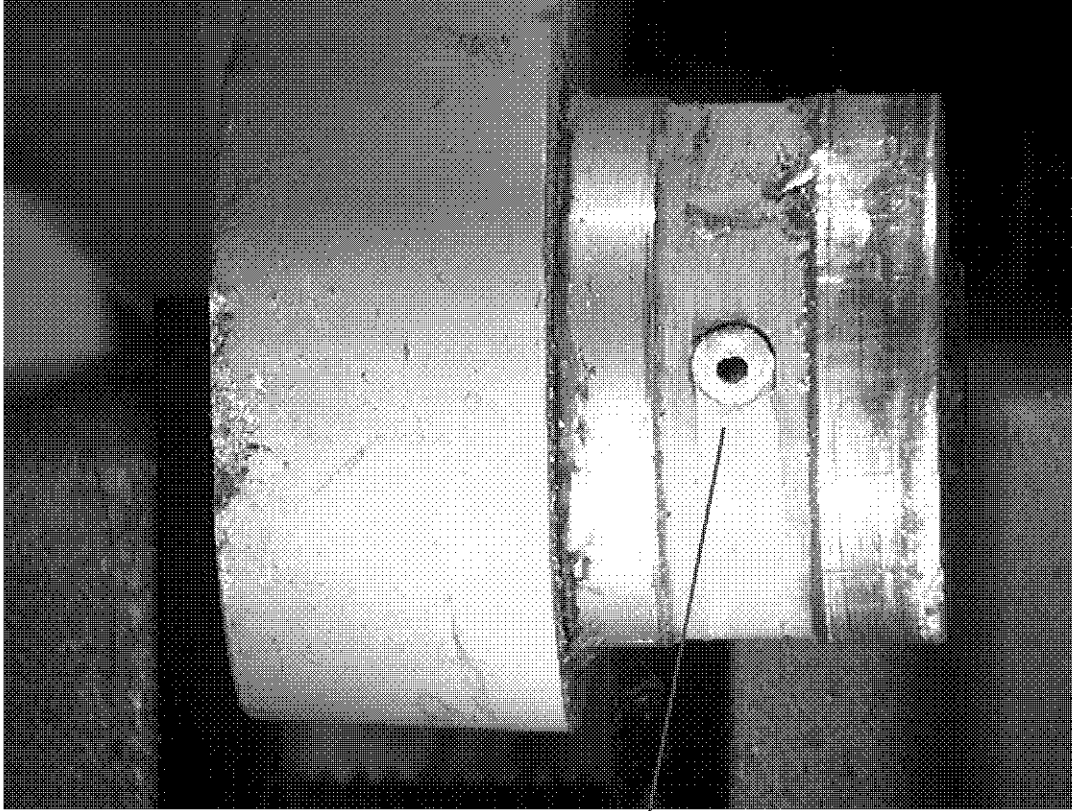


Figure 39, Bellcrank #2, sheared rivet

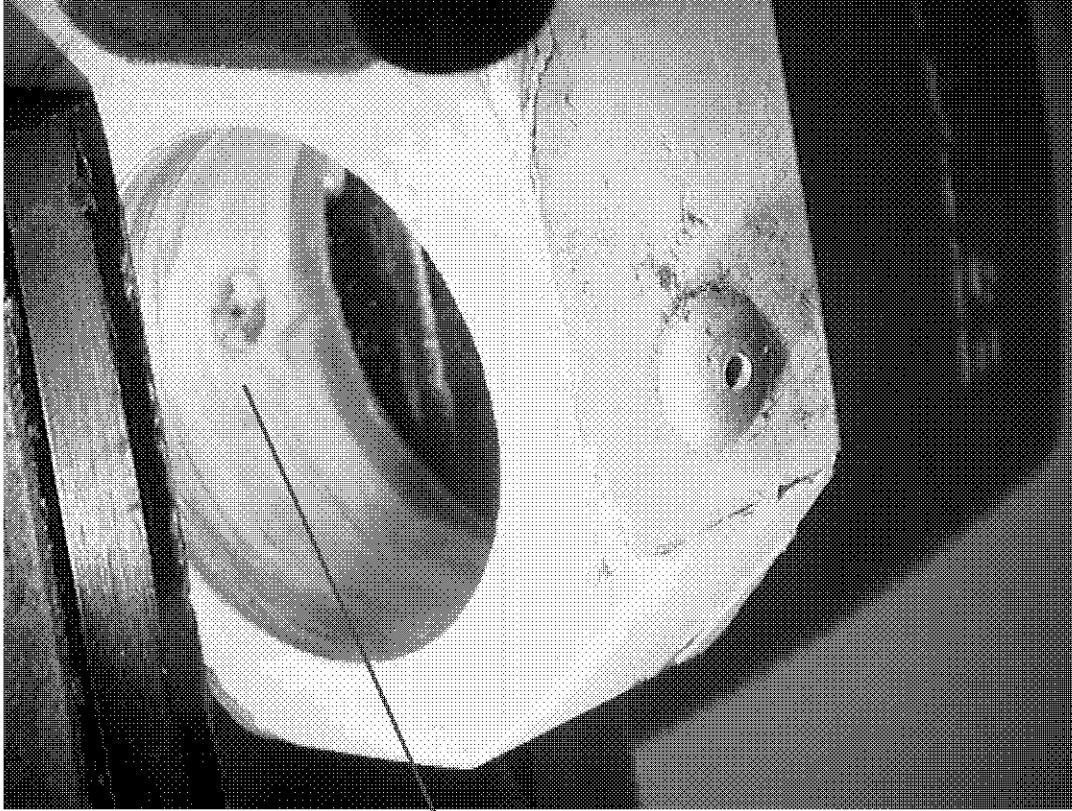


Figure 40, Bellcrank #2, sheared rivet

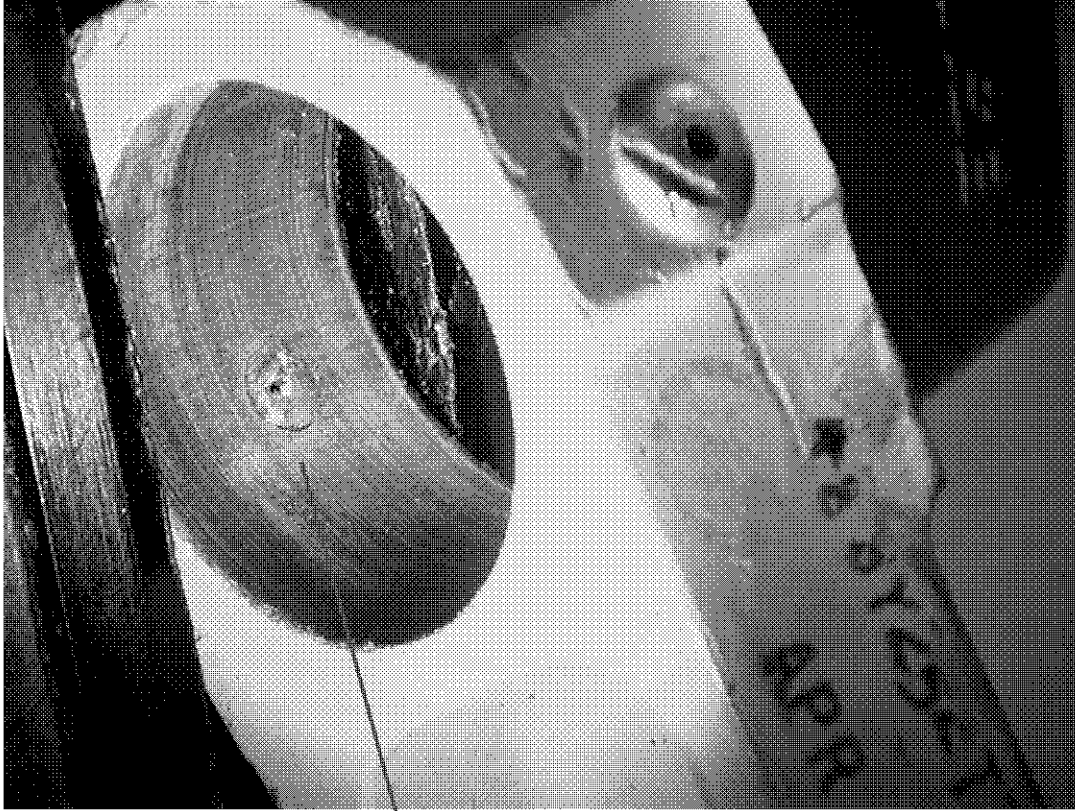


Figure 41, Bellcrank #2, sheared rivet

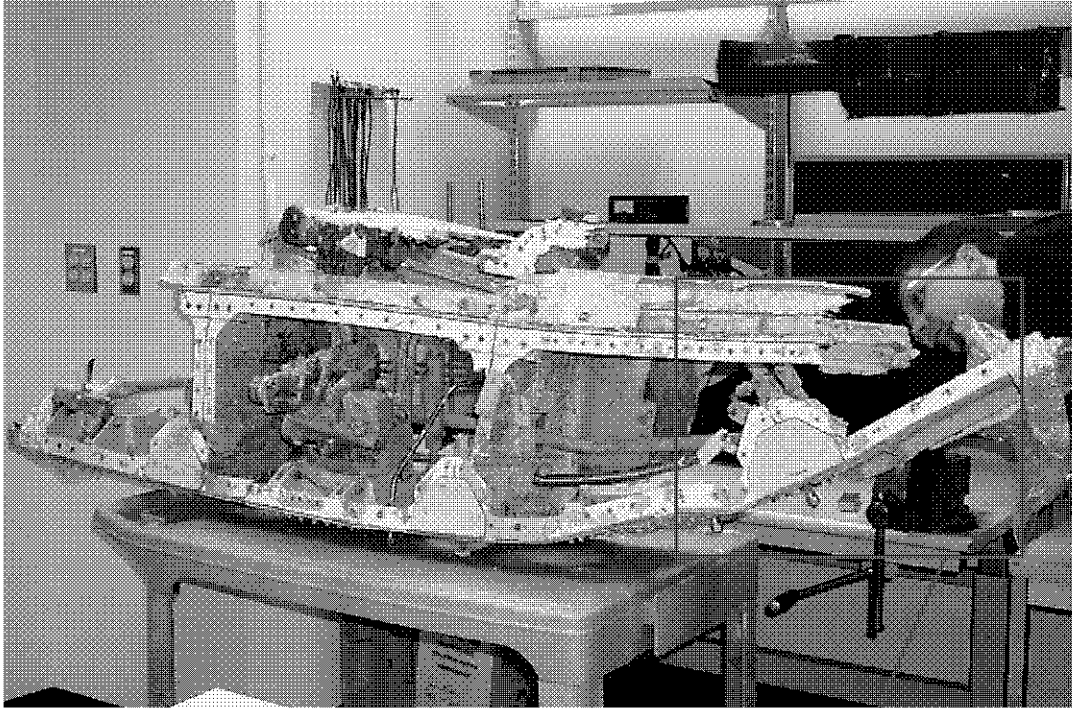


Figure 42, Section containing Bellcrank #3 (as received in EQA Laboratory)

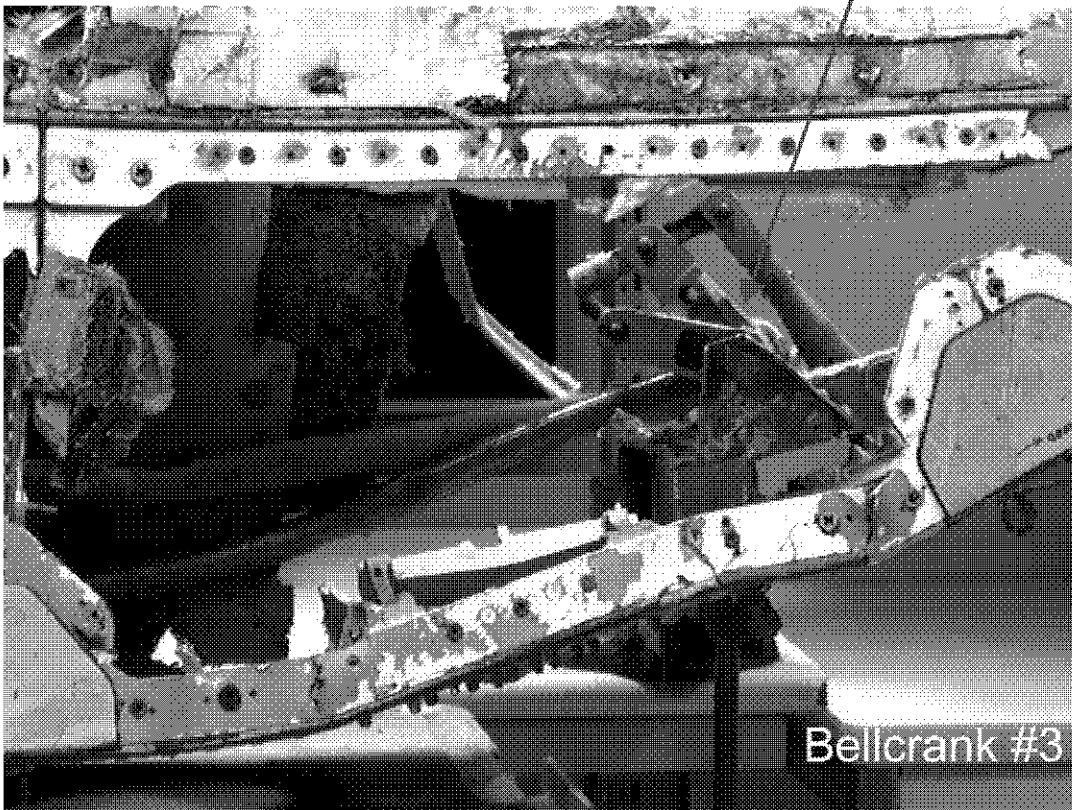


Figure 43, Bellcrank #3 as received in EQA Laboratory

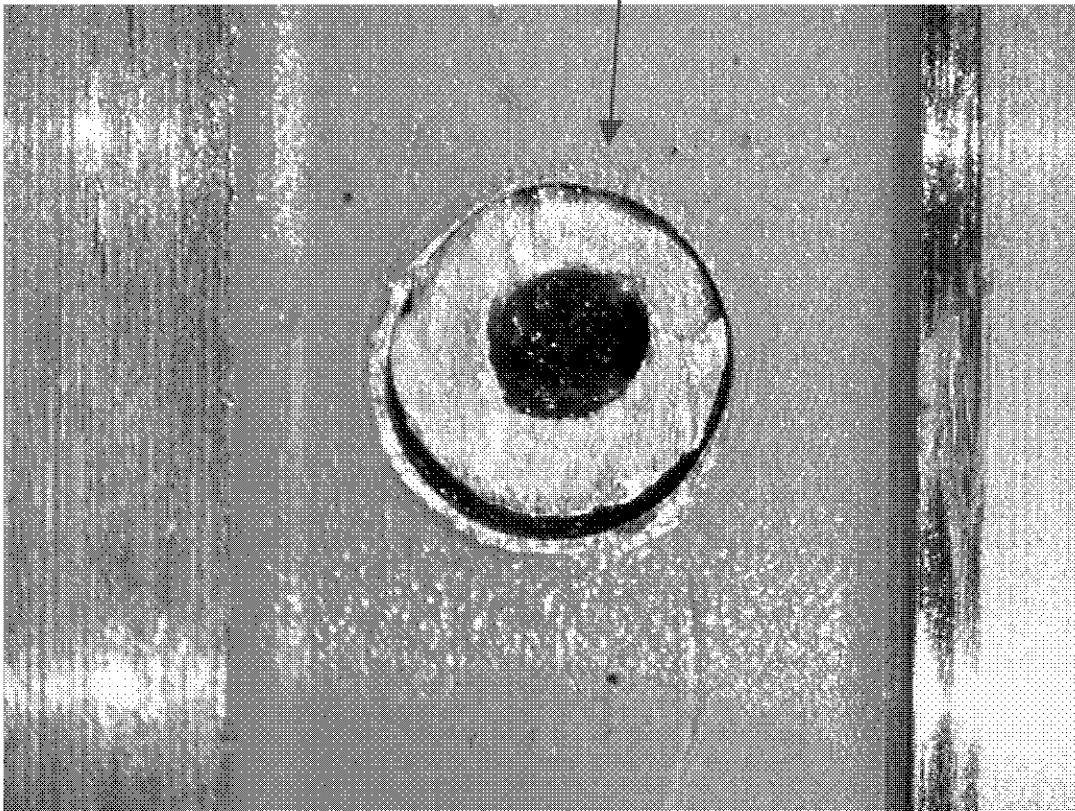
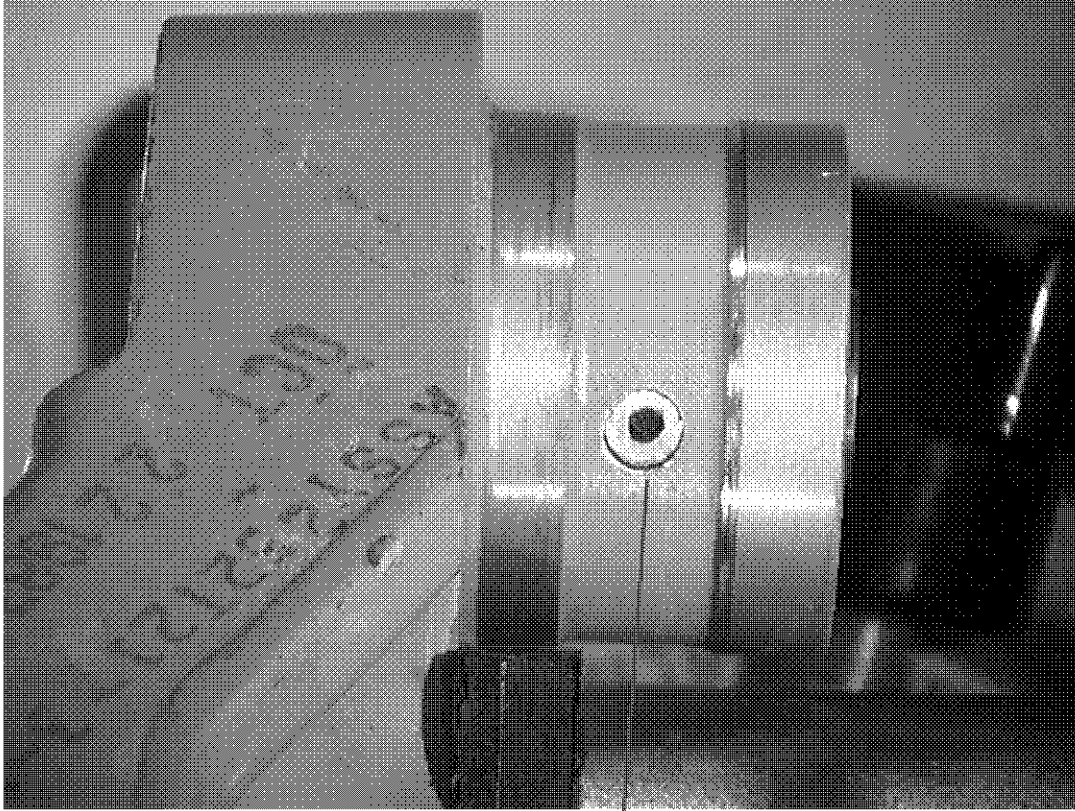


Figure 44, Bellcrank #3, sheared rivet

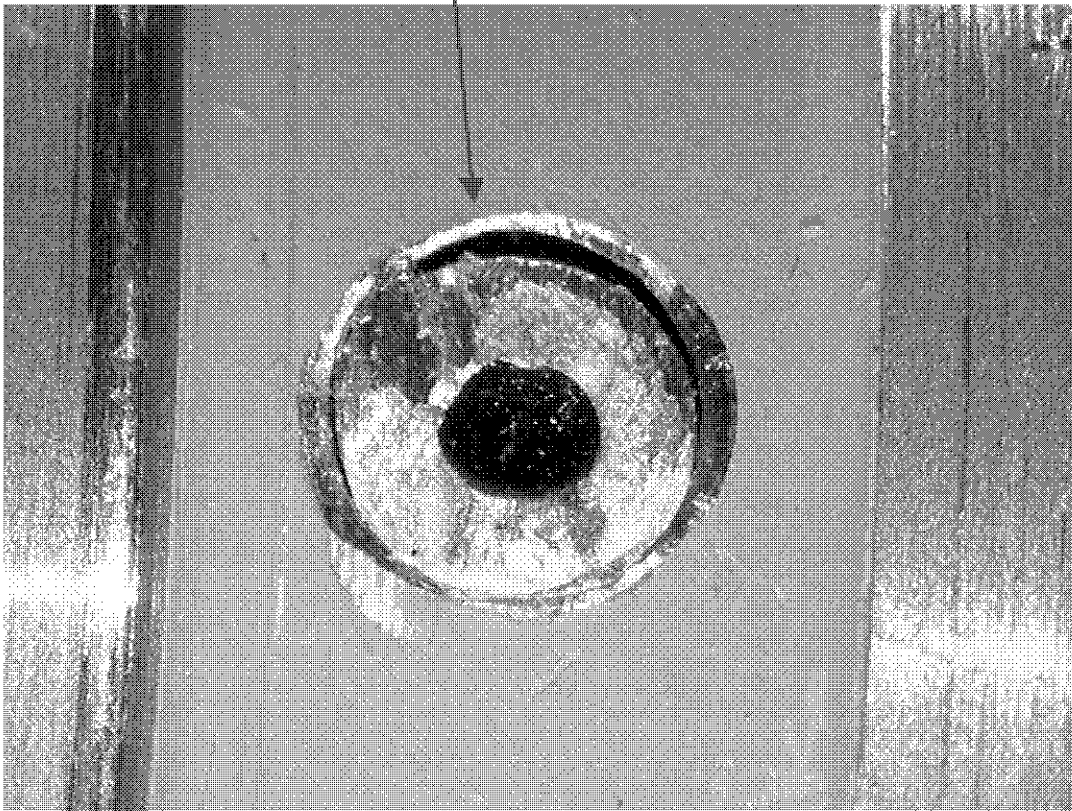
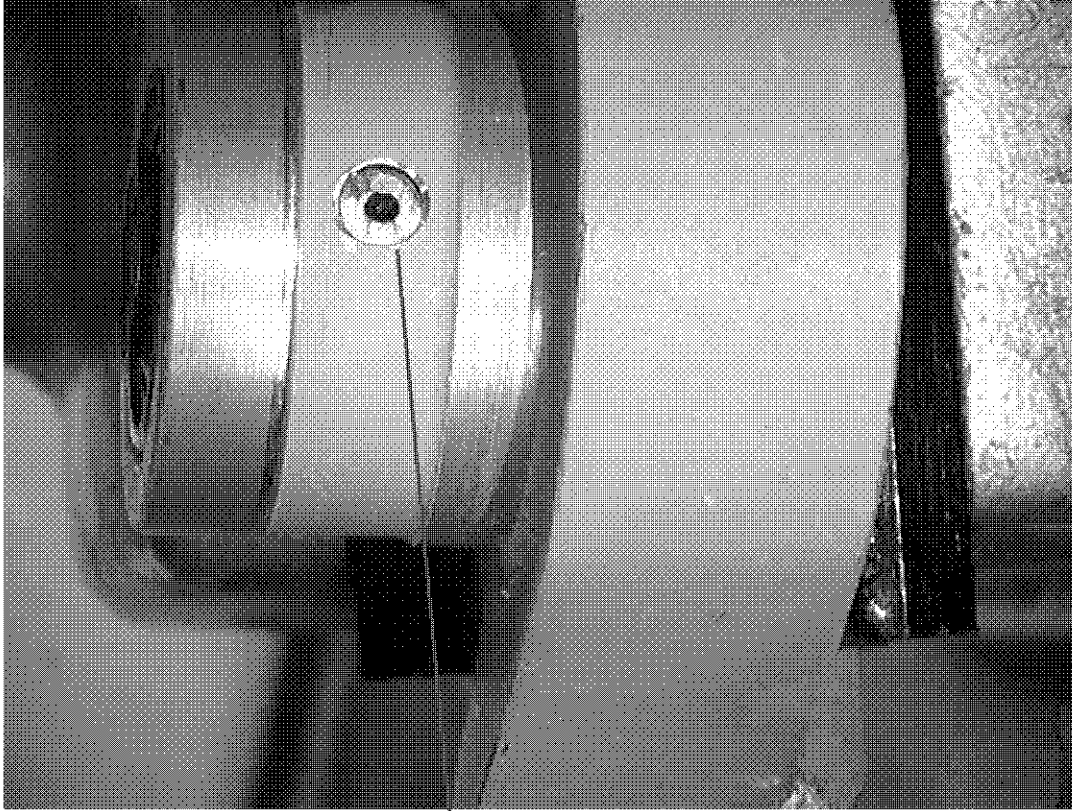


Figure 45, Bellcrank #3, sheared rivet



Figure 46, Bellcrank #3, sheared rivet

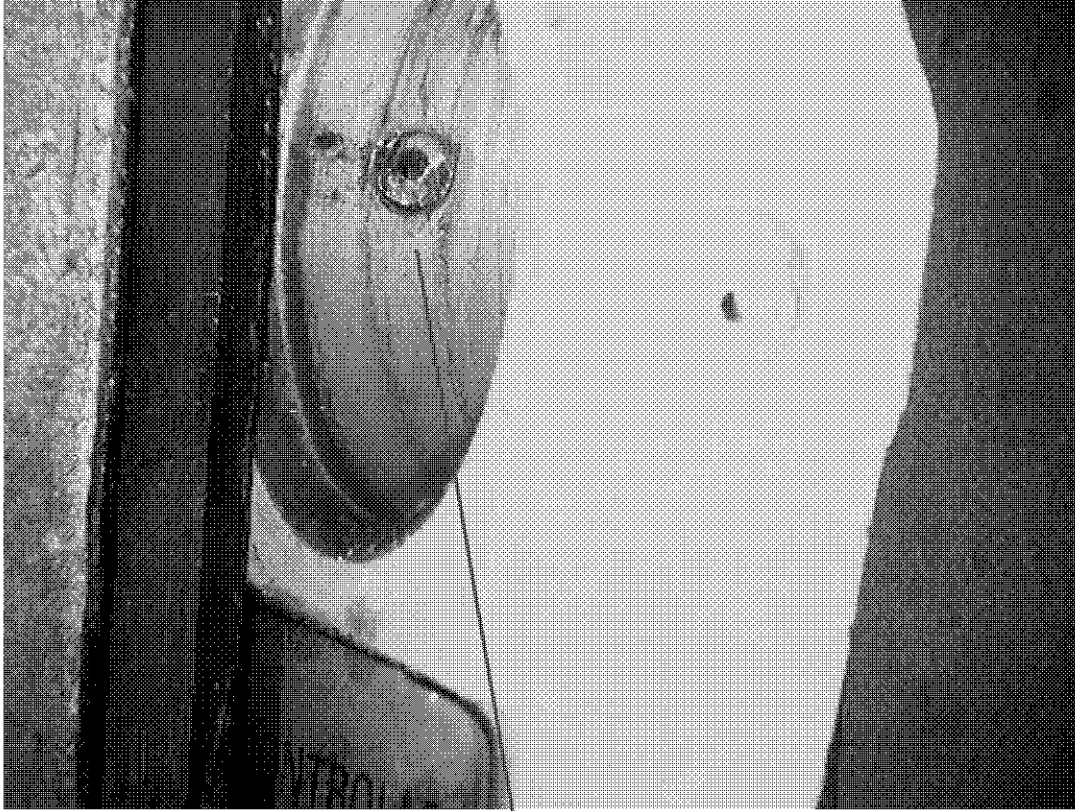


Figure 47, Bellcrank #3, sheared rivet

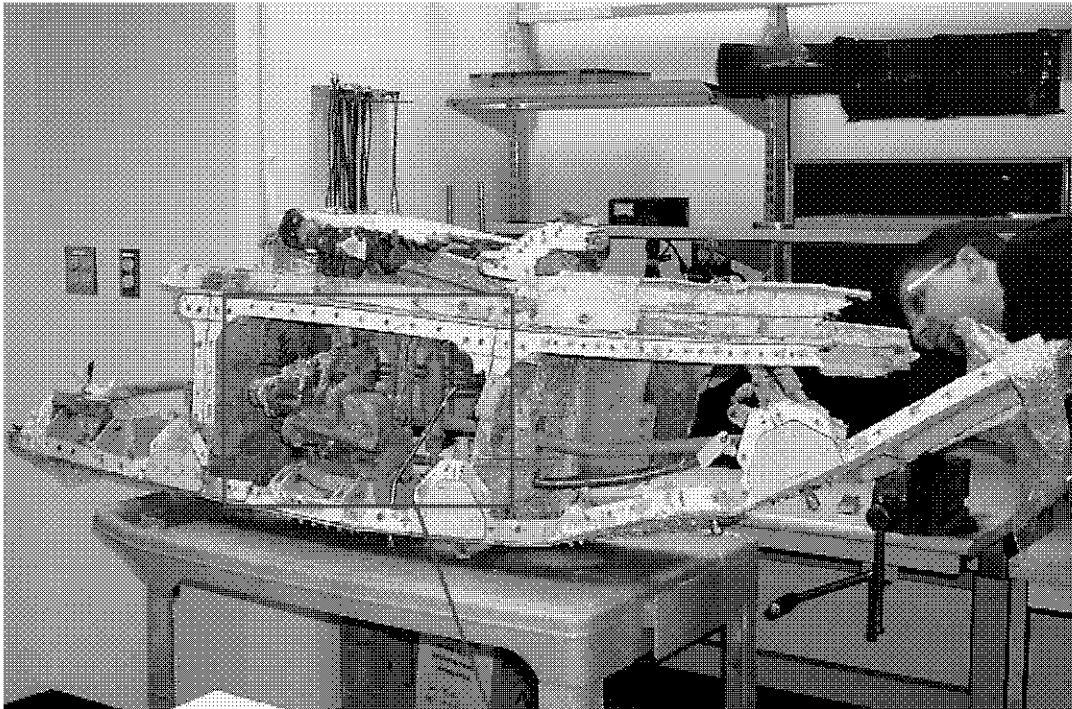


Figure 48, Section containing Bellcrank #4 (as received in EQA Laboratory)

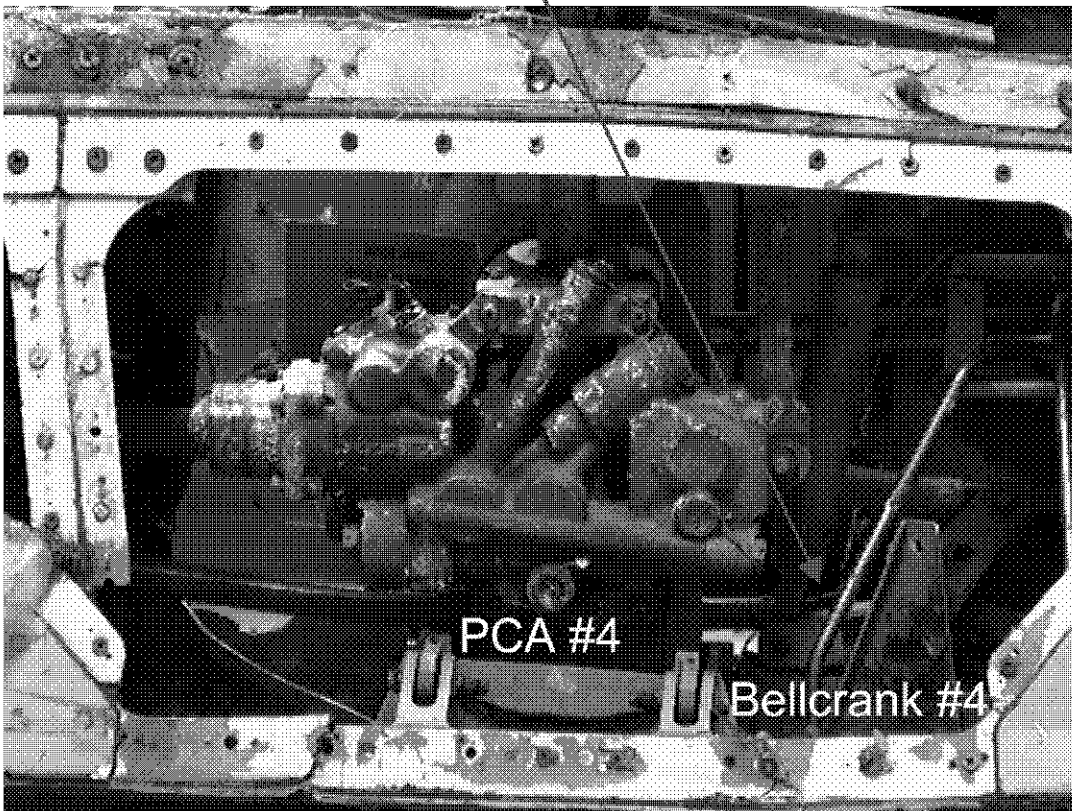


Figure 49, Bellcrank #4, as received in EQA Laboratory

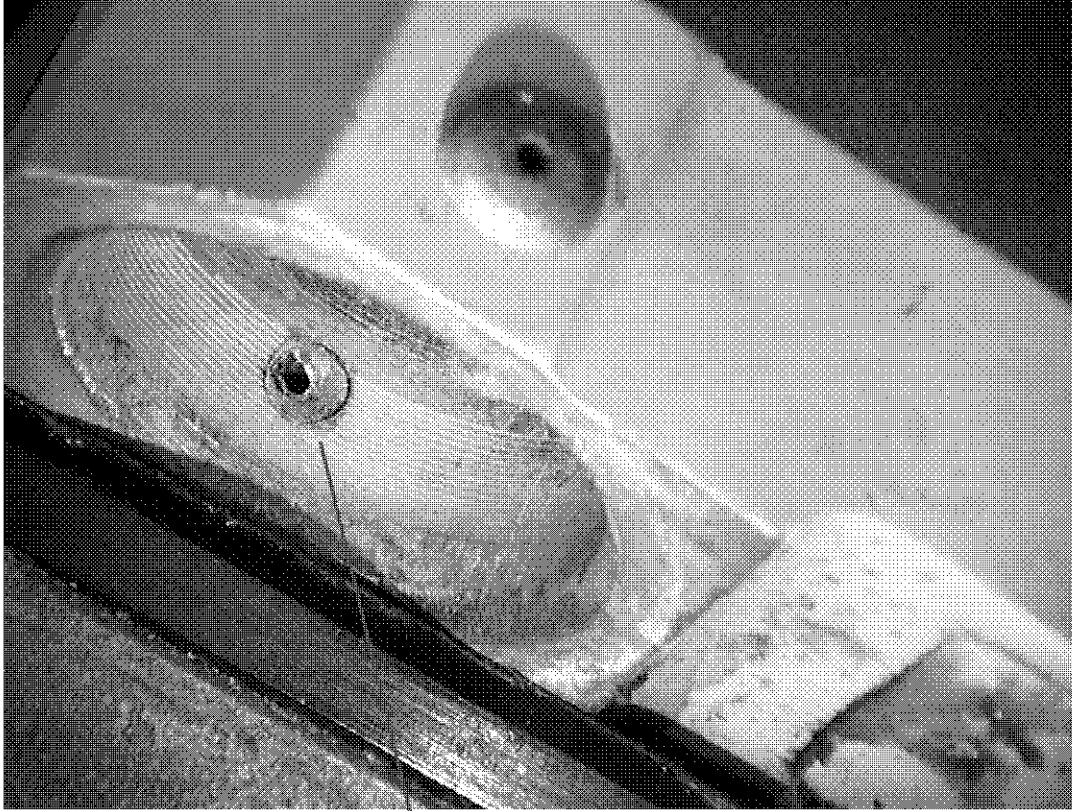


Figure 50, Bellcrank #4, sheared rivet

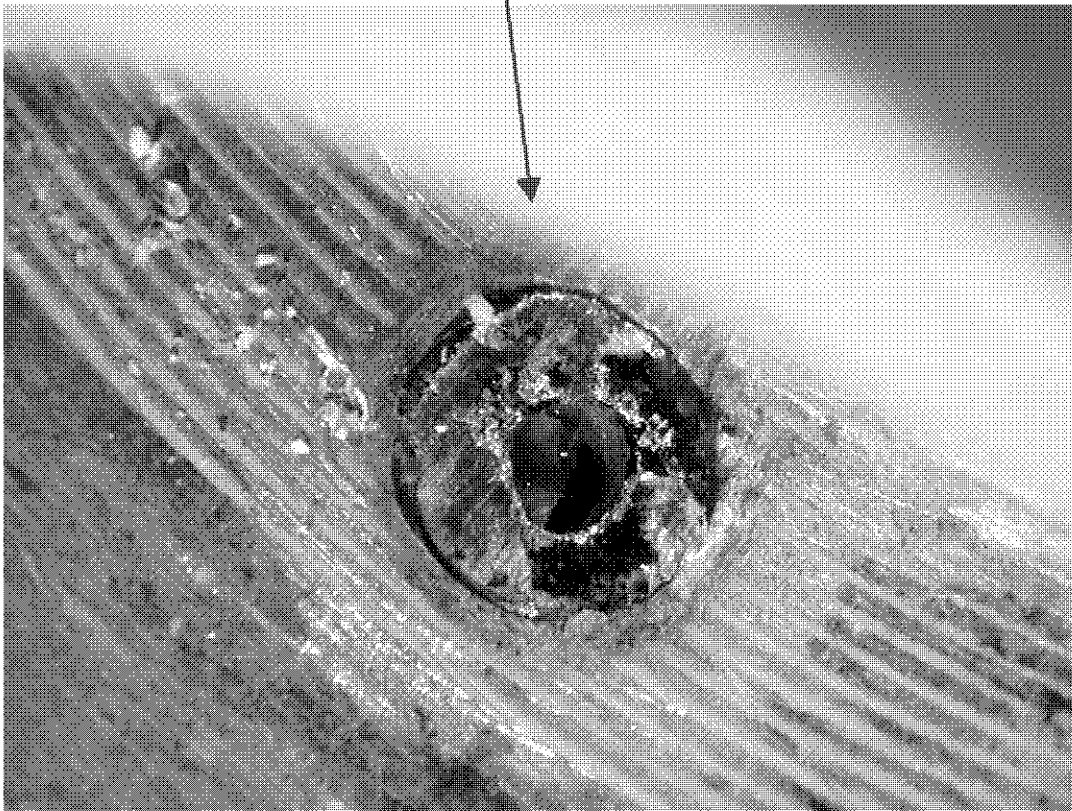
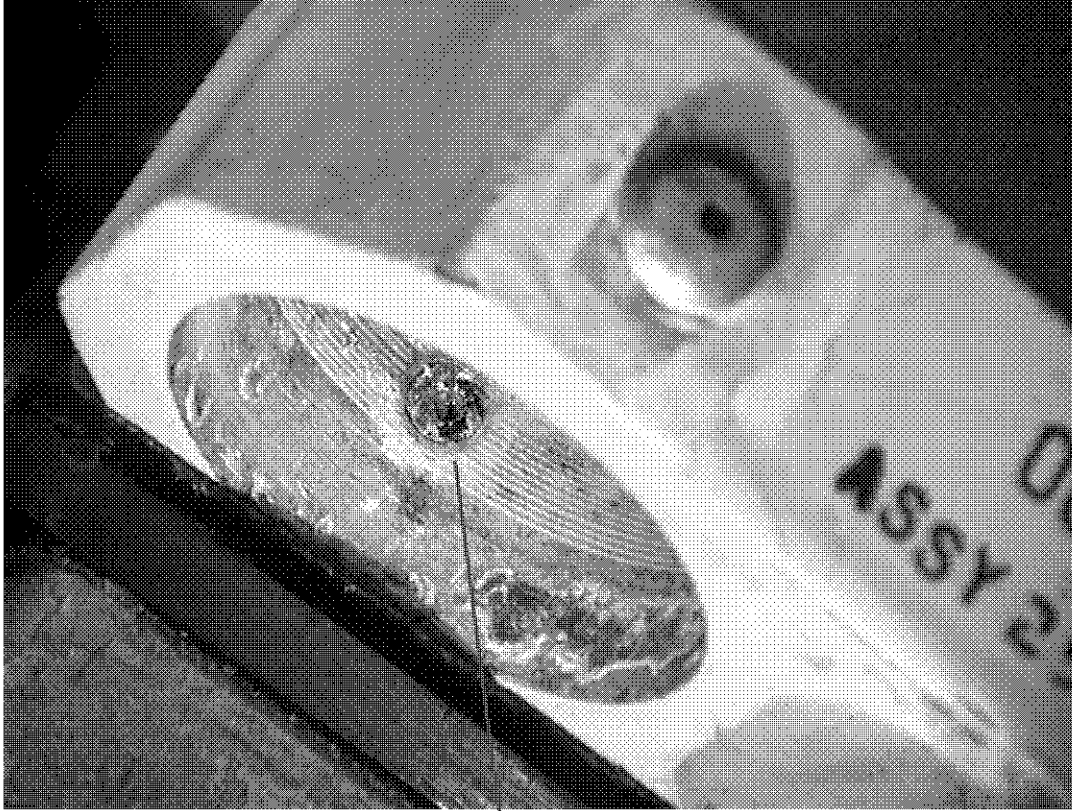


Figure 51, Bellcrank #4, sheared rivet

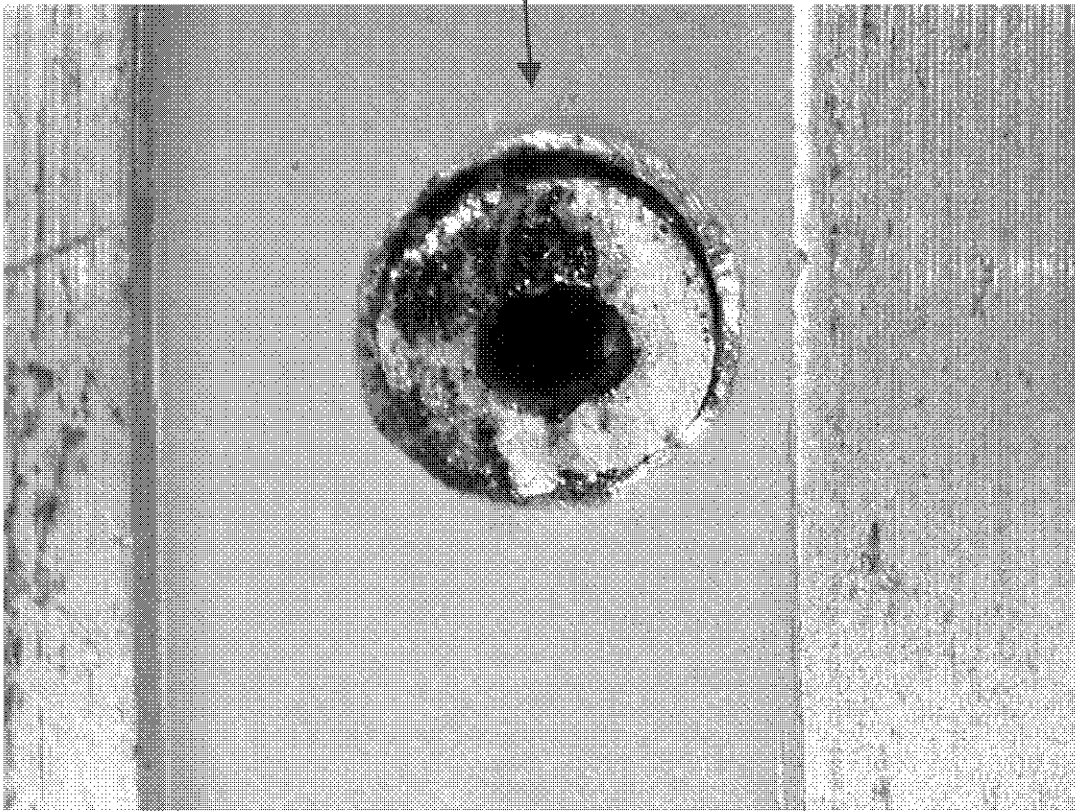
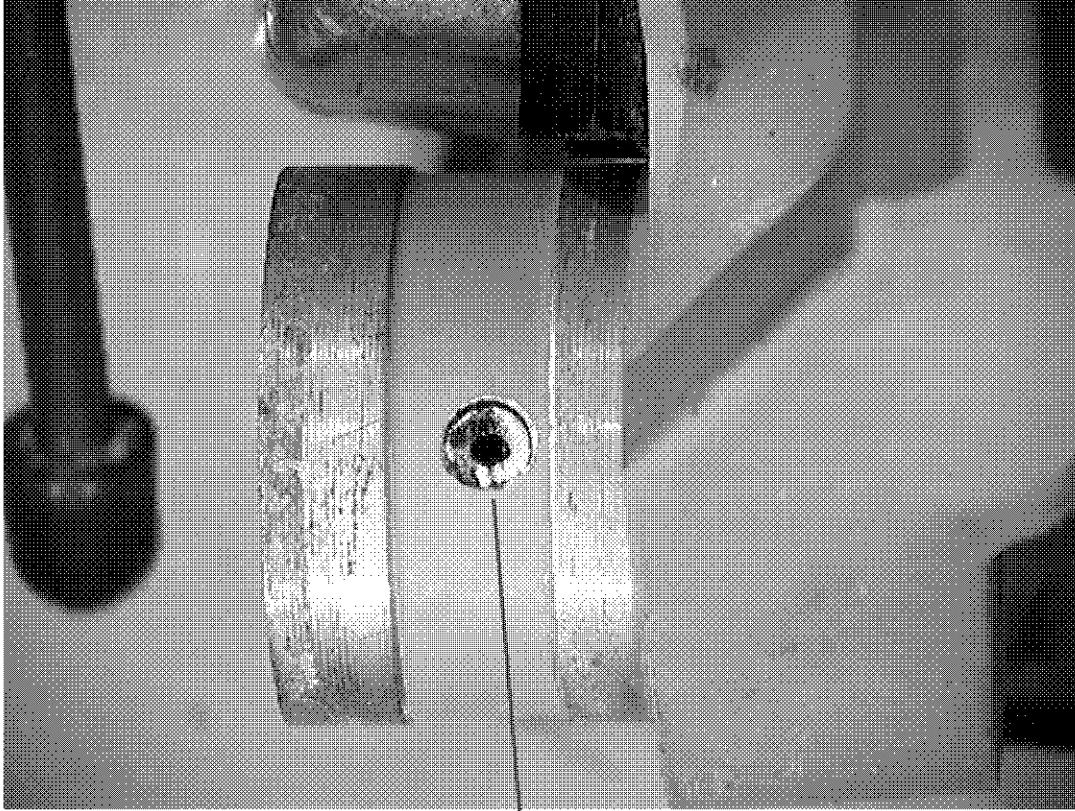


Figure 52, Bellcrank #4, sheared rivet

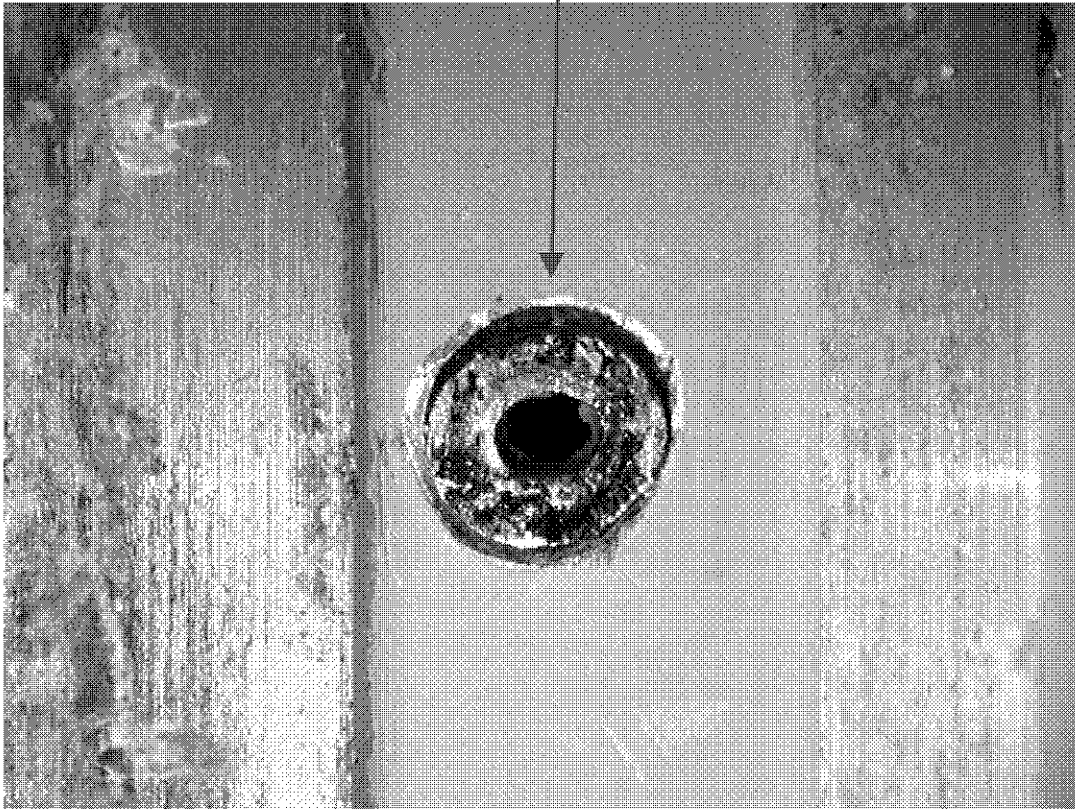
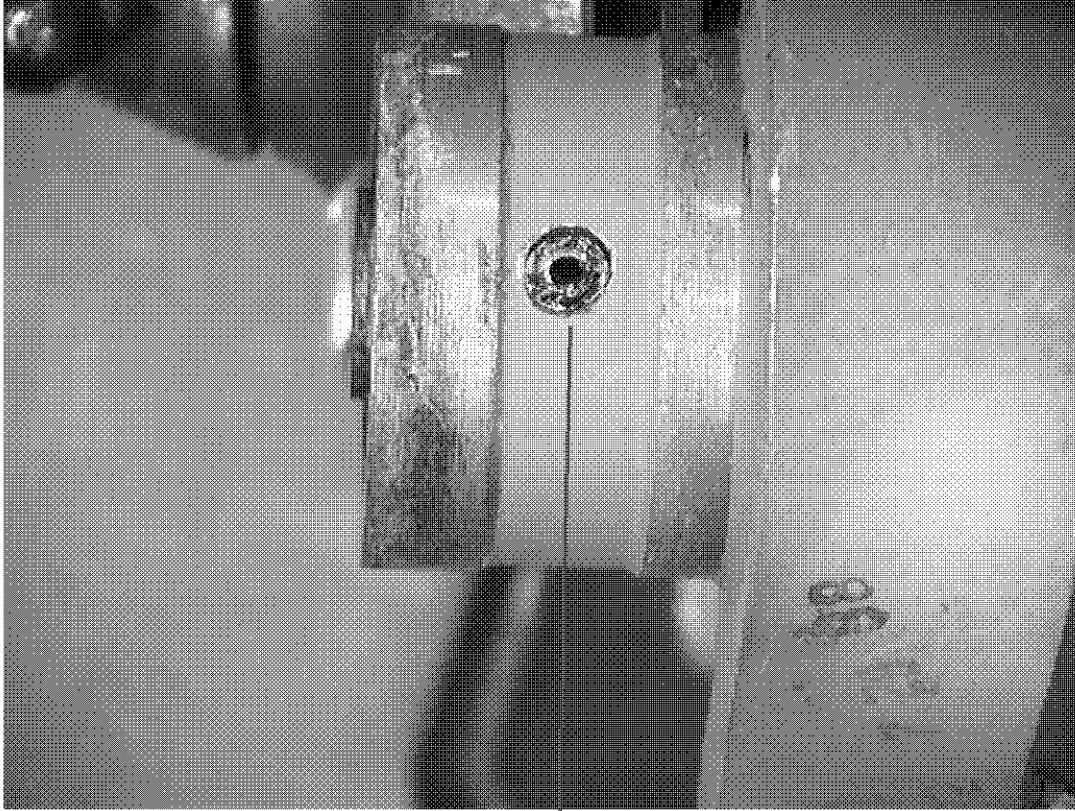


Figure 53, Bellcrank #4, sheared rivet

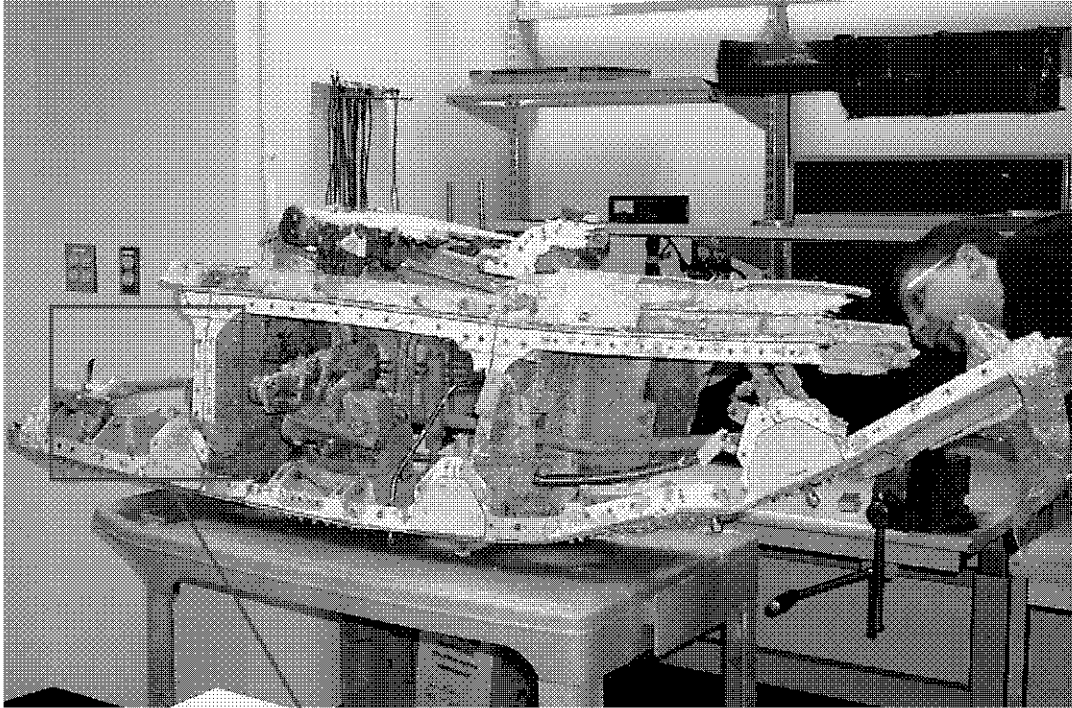


Figure 54, Section containing Bellcrank #5 (as received in EQA Laboratory)



Figure 55, Bellcrank #5, as received in EQA Laboratory

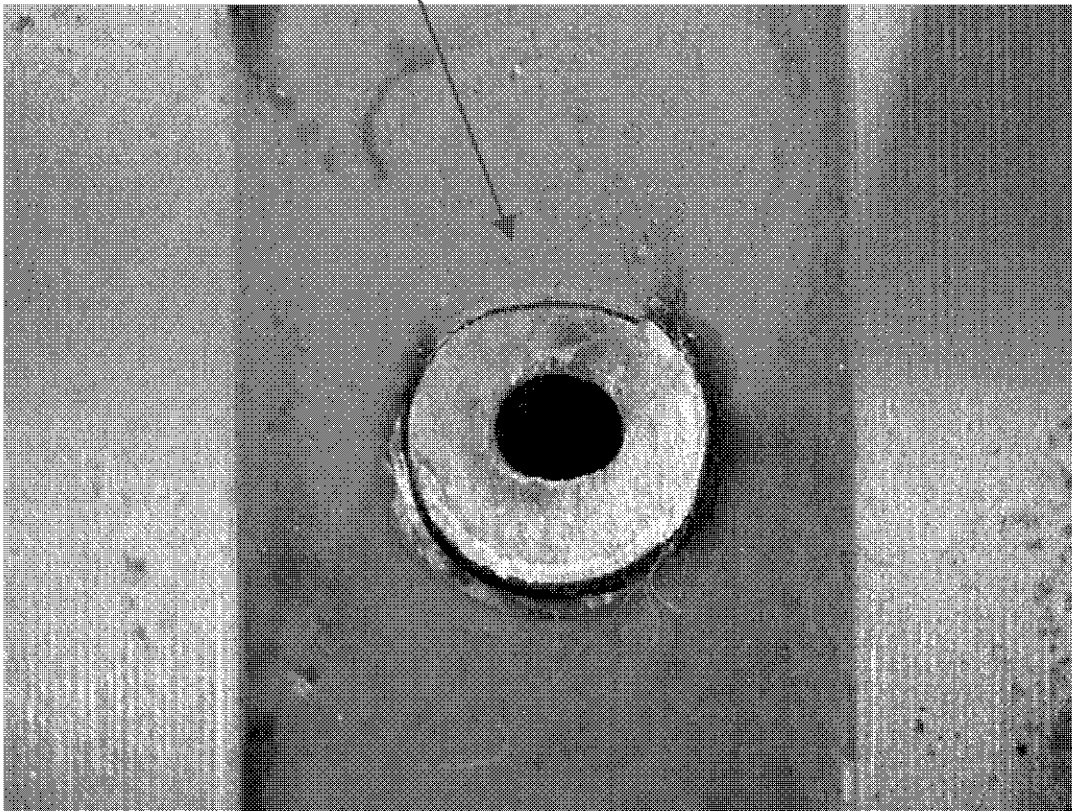
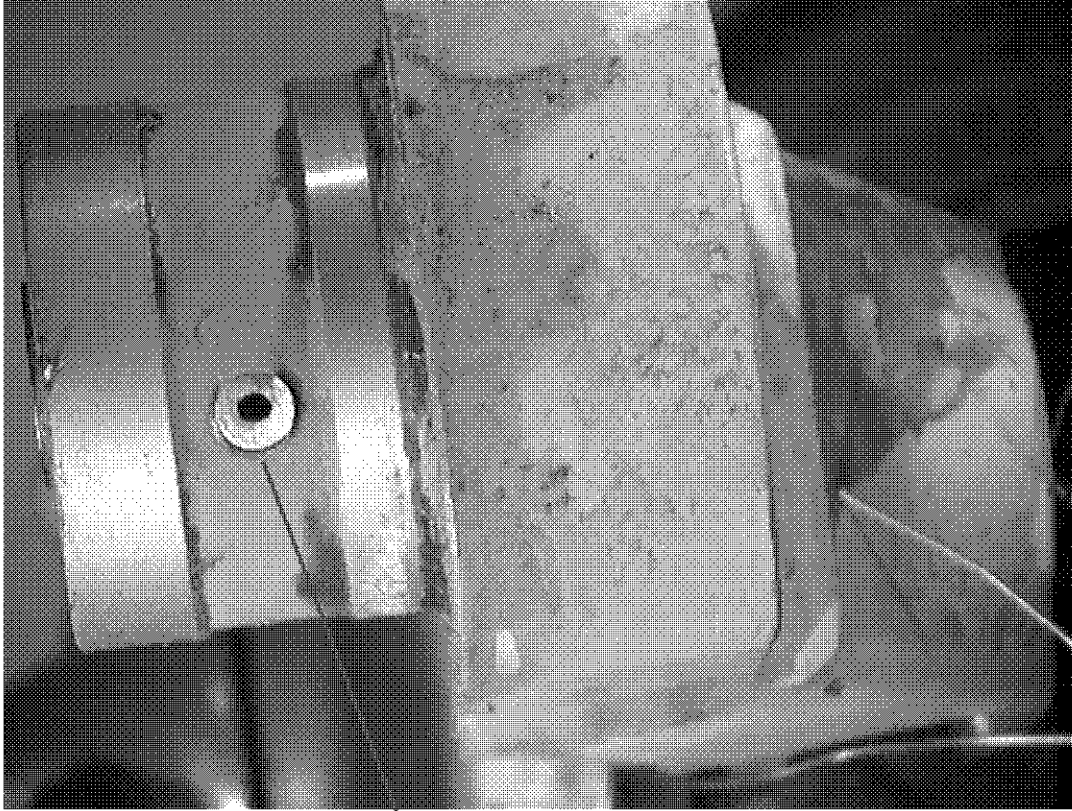


Figure 56, Bellcrank #5, sheared rivet

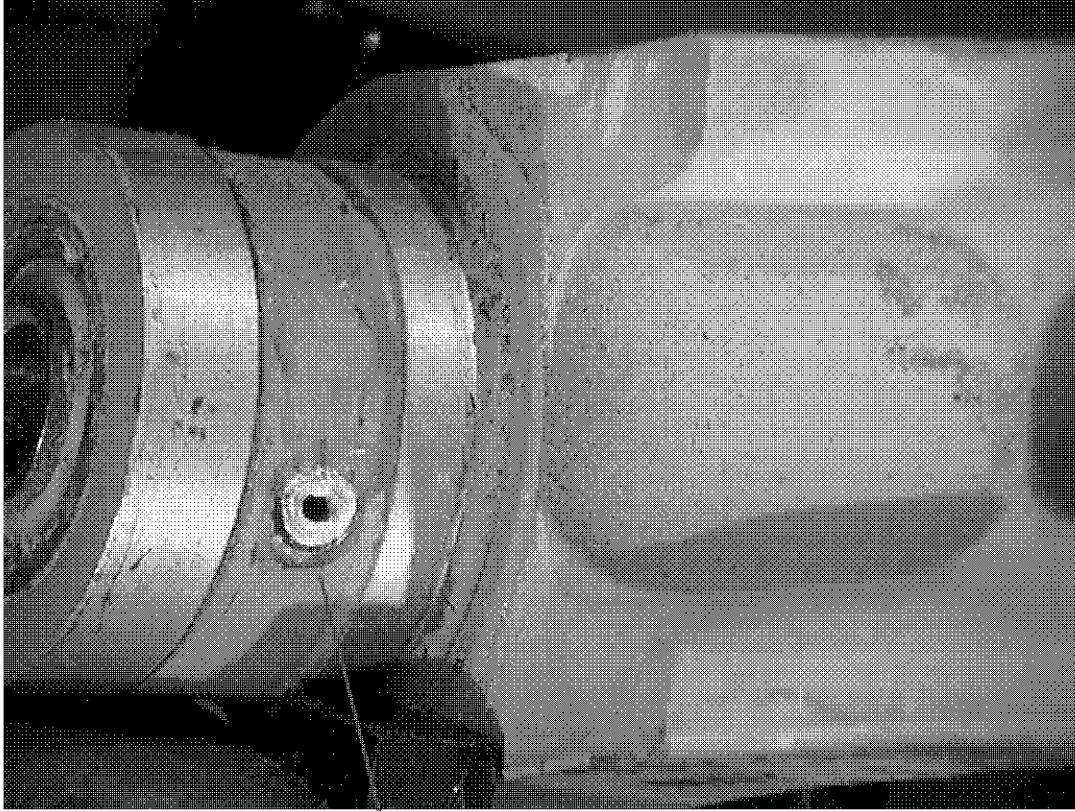


Figure 57, Bellcrank #5, sheared rivet

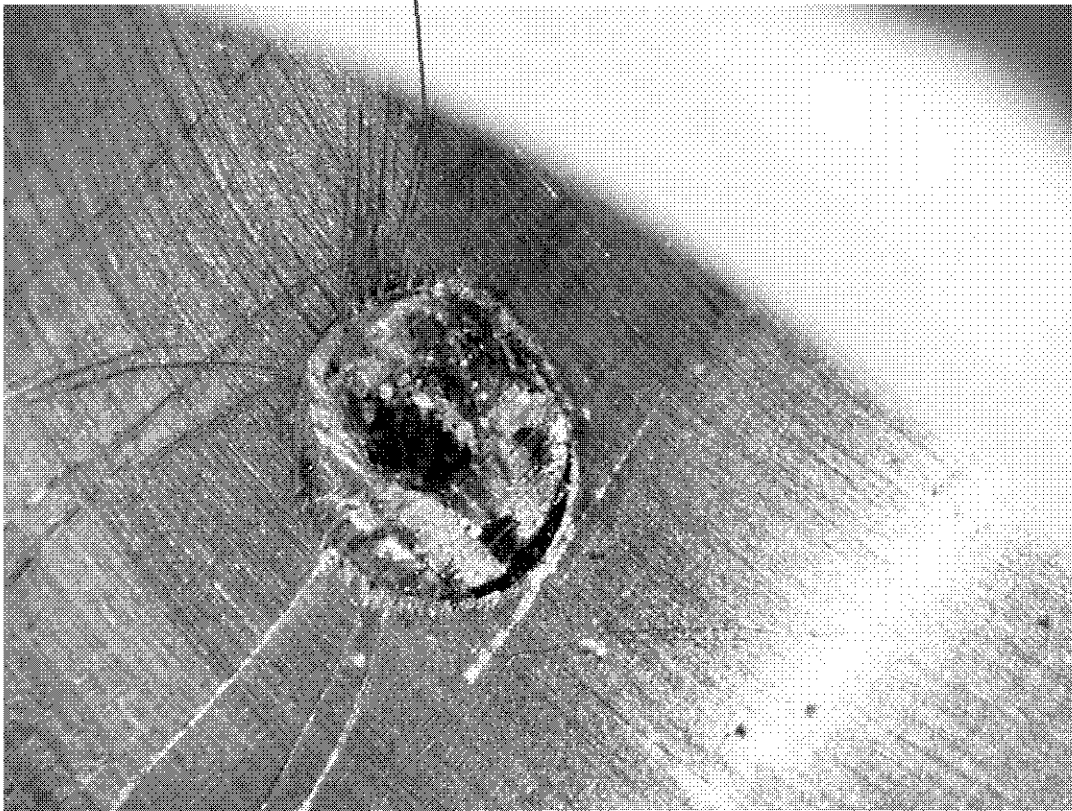
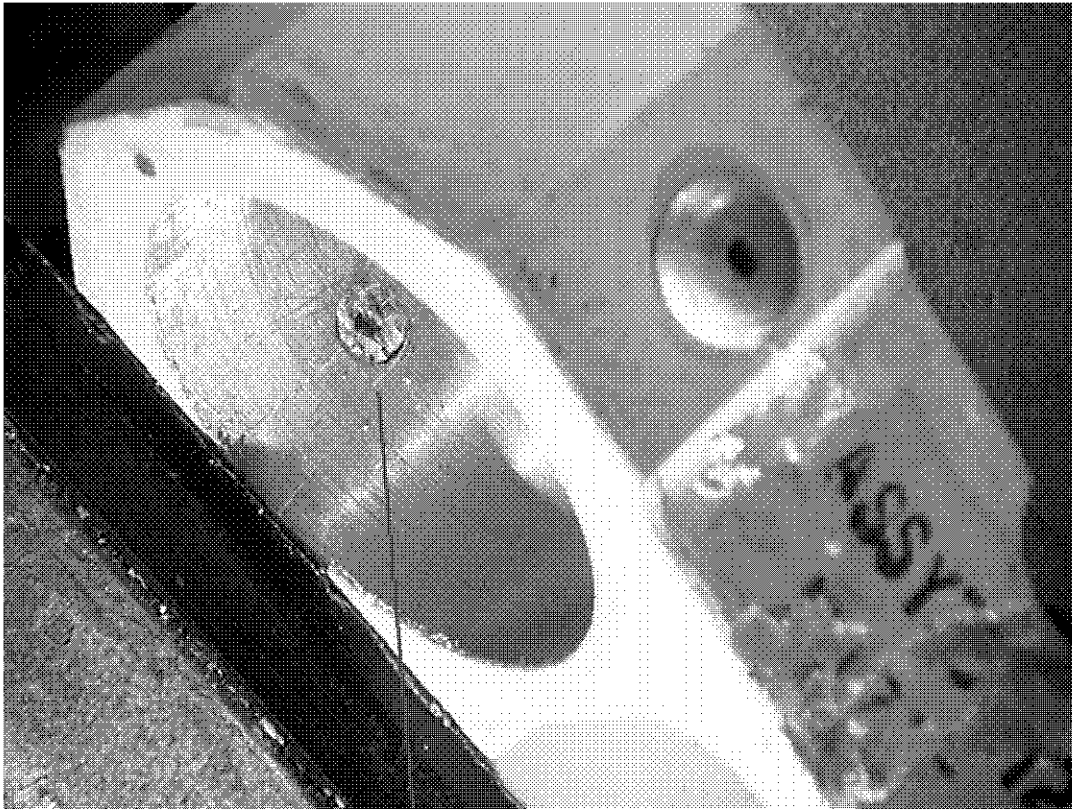


Figure 58, Bellcrank #5, sheared rivet

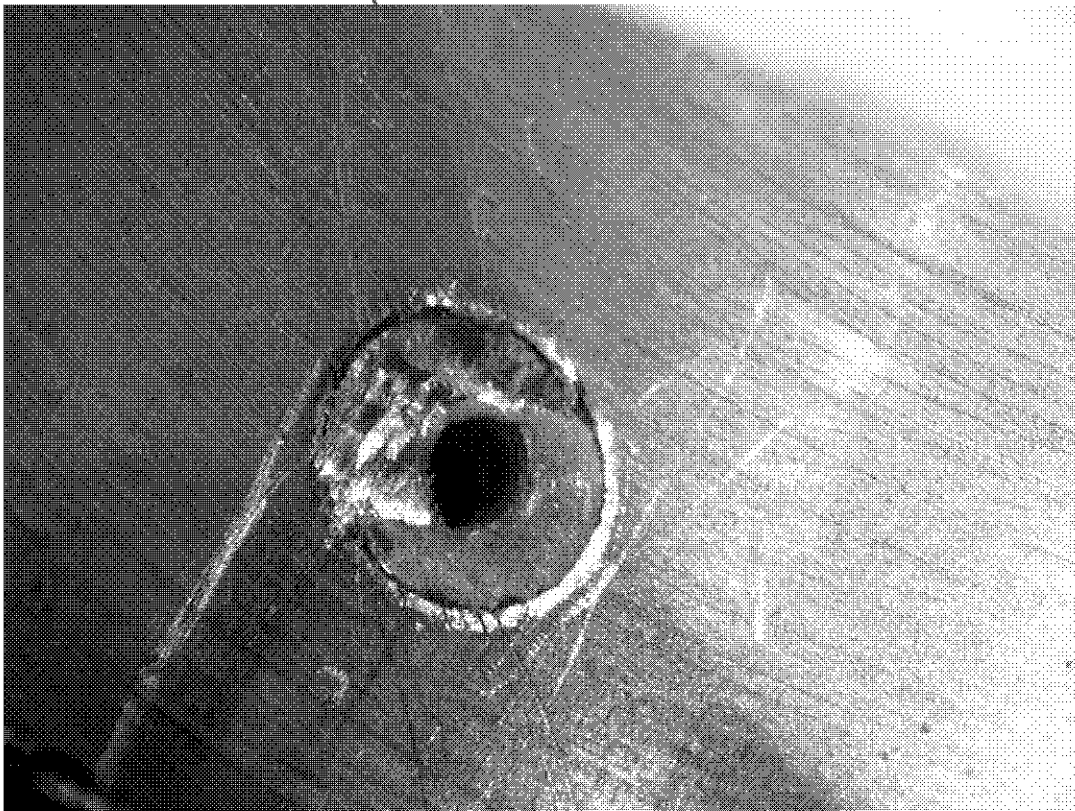
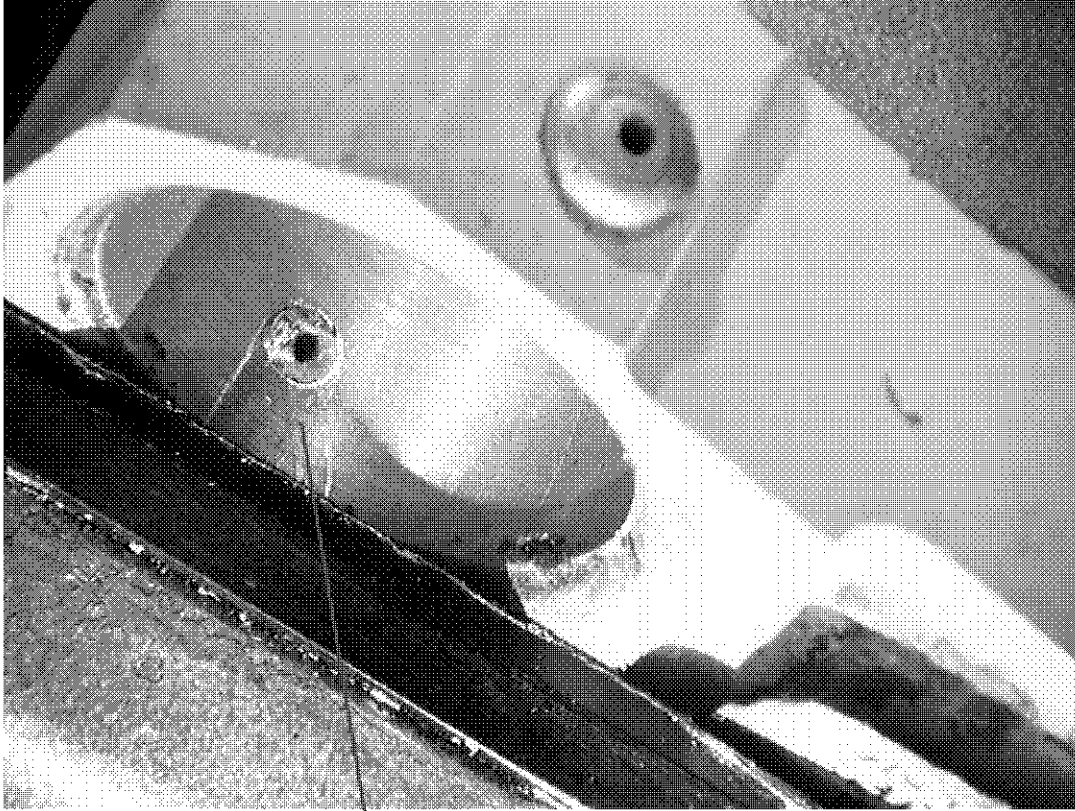


Figure 59, Bellcrank #5, sheared rivet



Figure 60, Elevator feel computers #1 and #2, as received in EQA Laboratory



Figure 61, Elevator feel computers #1 and #2, as received in EQA Laboratory

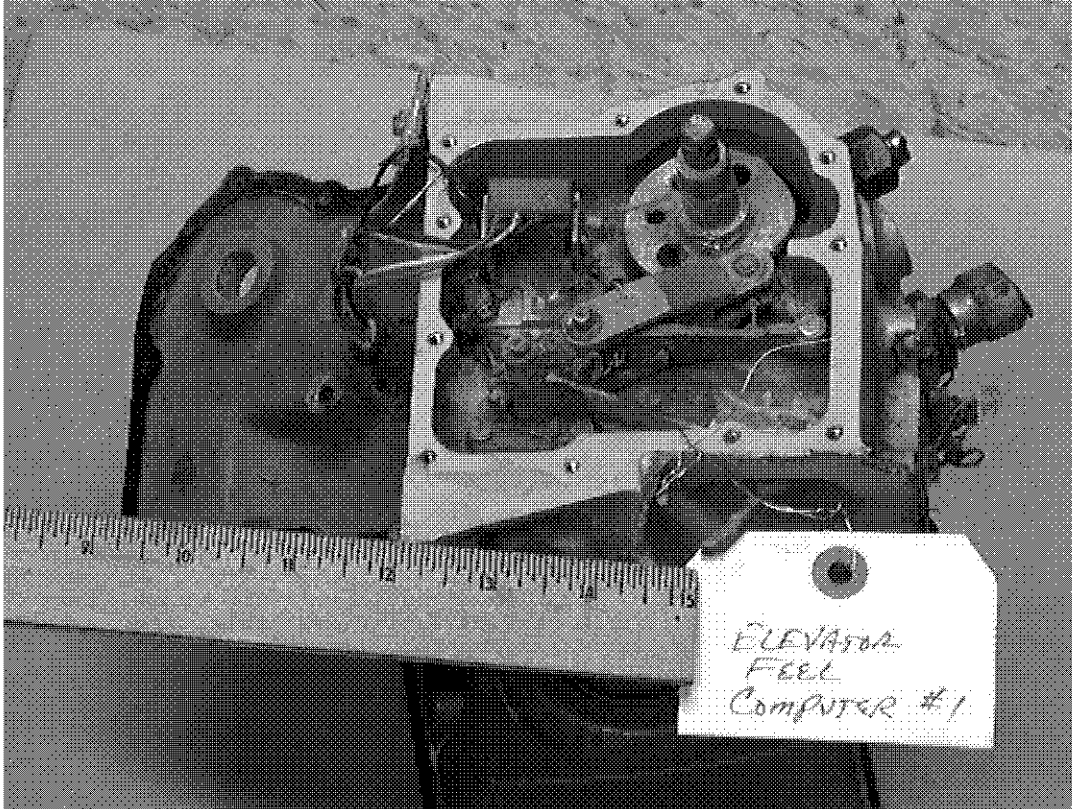


Figure 62, Elevator feel computer #1

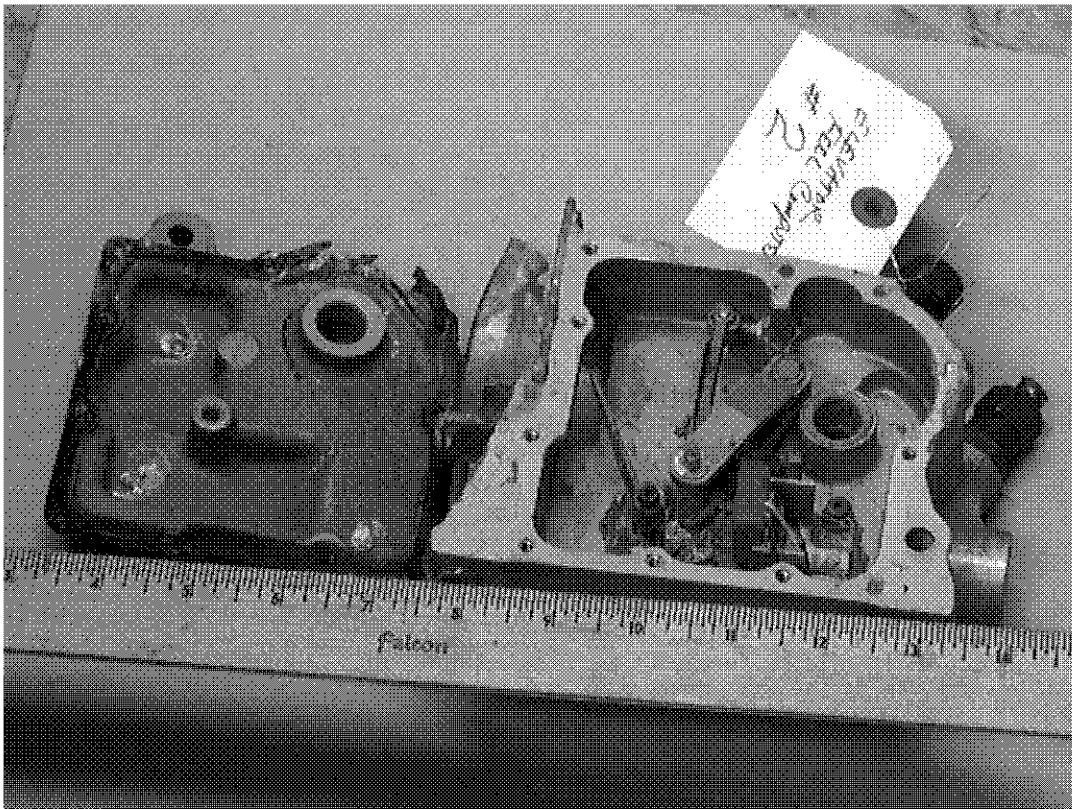


Figure 63, Elevator feel computer #2