



Survival Factors Photographs

Concan, Texas

HWY17MH011

(11 pages)



Photo 1 – Frontal view of deformation to 2007 Dodge Ram quad-cab 3500 pickup truck.



Photo 2 – Left side profile view of deformation to 2007 Dodge Ram quad-cab 3500 pickup truck.



Photo 3 – Interior view of intrusion into driver seating area in 2007 Dodge Ram quad-cab 3500 pickup truck.



Photo 4 – Interior view from left side showing distance from steering wheel hub to driver seatback.



Photo 5 – Interior view of driver seating area in 2007 Dodge Ram quad-cab 3500 pickup truck. NOTE: Driver's seat belt is in locked and stowed position.

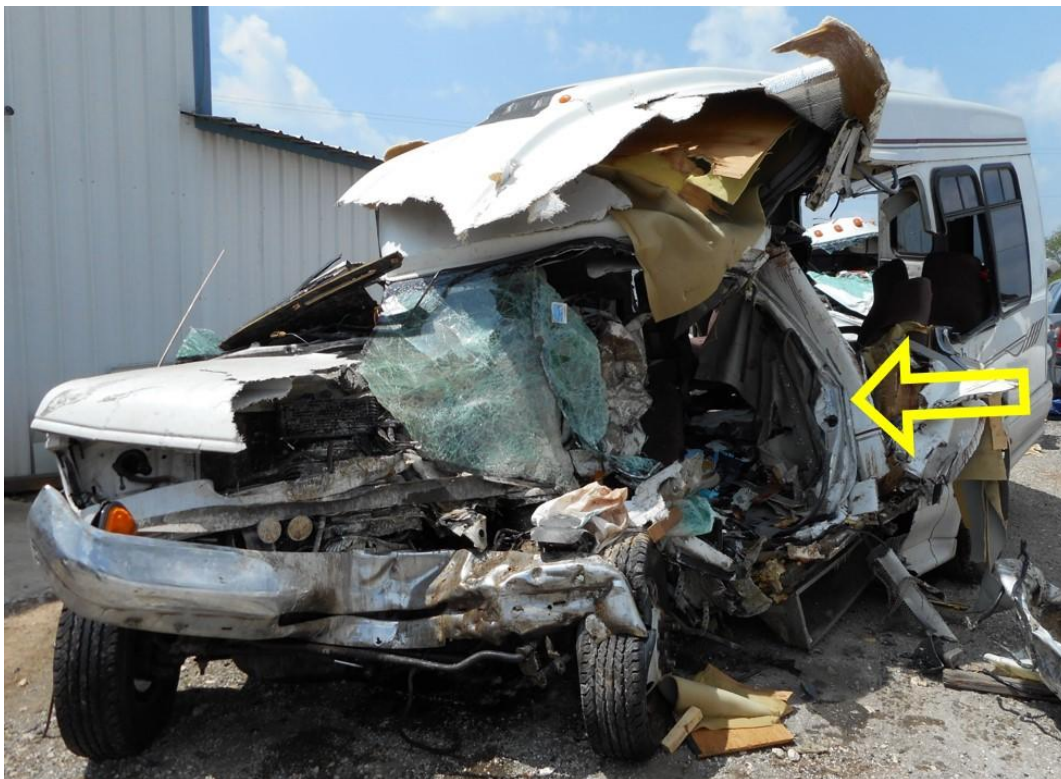


Photo 6 – Front left angle view of deformation to 2004 Ford E350 cutaway chassis with a 13-passenger Turtle Top Vanterra medium-size bus body. NOTE: Yellow arrow indicates area of accordion style crush.



Photo 7 – Exterior view from right side showing deformation and extraction damage to 2004 Ford E350 cutaway chassis with a 13-passenger Turtle Top Vanterra medium-size bus body.

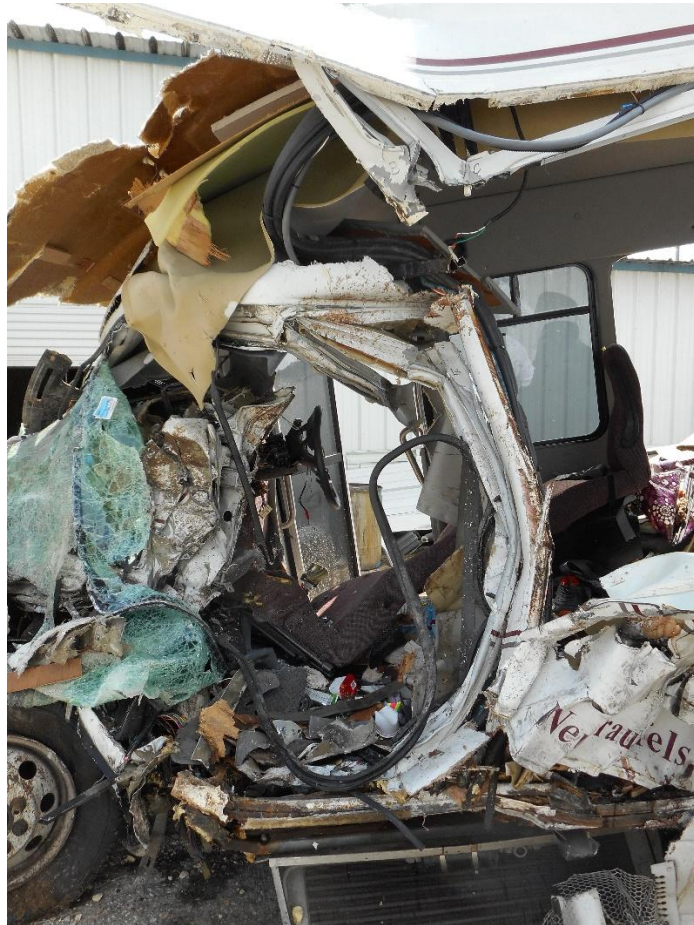


Photo 8 – View from left side looking into driver's seating area showing extent of intrusion.



Photo 9 – Close-up view of driver's severed lap and shoulder restraint in 2004 Ford E350 cutaway chassis.



Photo 10 – View of driver's air bag module that was found outside vehicle.



Photo 11 – Interior view from rear looking forward showing extent of intrusion and extrication damage to 2004 Ford E350 cutaway chassis.



Photo 12 – Closer-up interior view of 2004 Ford E350 showing extent of damage and intrusion into driver and front right passenger area.



Photo 13 – View of front of seat row 1A and 1B that were removed during extrication.



Photo 14 – View of backside of seat row 1A and 1B that were removed during extrication.



Photo 15. Interior view of seat 2A with seat 2B removed during extrication. NOTE: Sidewall intrusion.



Photo 16. Interior view of loading door area in 2004 Ford E350 showing dislodged vertical entry grab pole.



Photo 17. Interior view of seat 3A in 2004 Ford E350 showing “web winder” also known as a traveling retractor.



Photo 18. Interior view of row 4 folding bench seats A & B with self-tightening/synching lap belts.



Photo 19. Close-up view of loading mark found on webbing in seat 4A in 2004 Ford E350. Similar loading marks were found on 3 of the 4 self-tightening/synching lap belts across the fourth row.



Photo 20. Close-up view of 6.5-inch lateral seat belt anchors in seat 4C. NOTE. Belt removed by first responders during extrication of passenger.