



Survival Factors Photographs

Baltimore, Maryland

HWY17MH007

(11 pages)



Photo 1 – Exterior view of deformation to front end and left side of IC school bus.



Photo 2 – View looking from outside entry door into loading stairwell and driver seating area showing interior deformation.



Photo 3 – Interior view of IC school bus looking from midway back to front showing buckling to roof and displaced driver seat.



Photo 4 – Closer-up interior view of displaced driver's seat and area of intrusion.



Photo 5 – Close-up view of damaged D-ring for school bus driver's shoulder belt.



Photo 6 – Close-up view of separated driver seat belt shoulder webbing.



Photo 7 – Front left angle view of deformation to frontal plane of Ford Mustang.

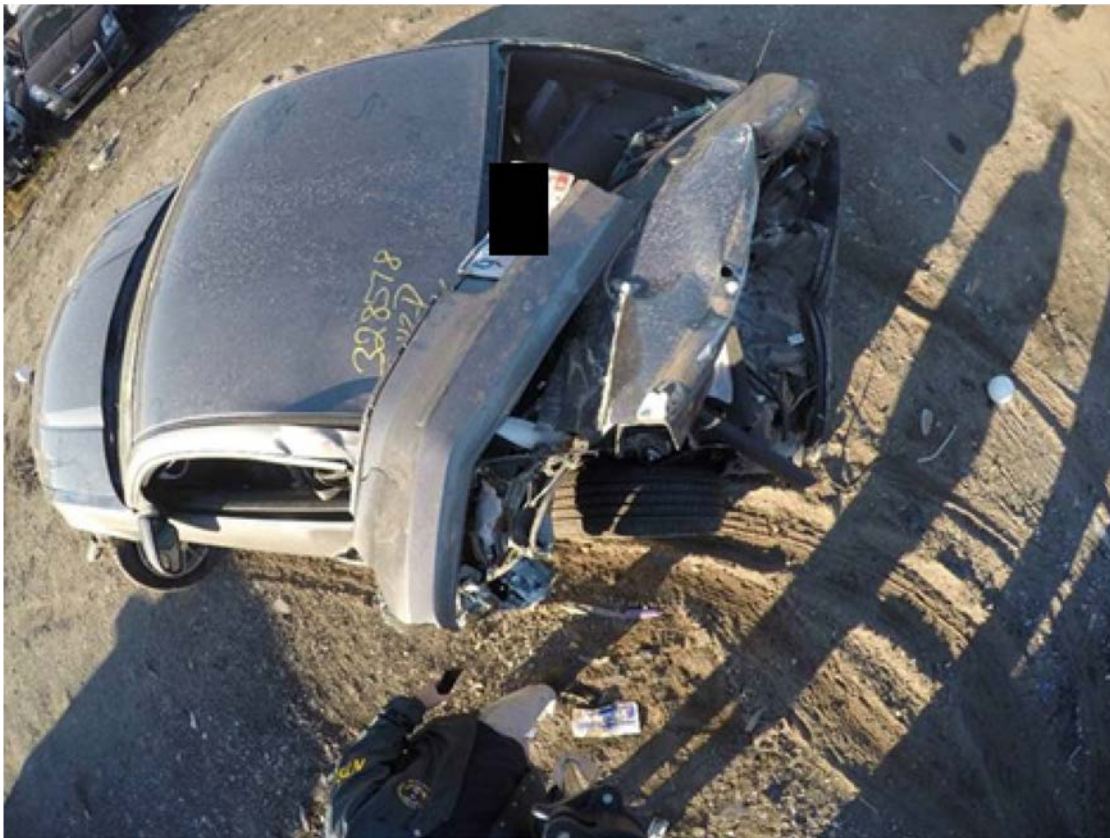


Photo 8 – Overhead view of deformation to rear plane of Ford Mustang.



Photo 9 – Rear left angle view of deformation to rear plane of Ford Mustang.



Photo 10 – Interior view of intrusion to back seat area of Ford Mustang.



Photo 11 – View of driver’s seatback side air bag in Ford Mustang.



Photo 12 – Exterior view of extent of deformation to front left bumper corner and down left side of New Flyer.



Photo 13 – Frontal view looking at deformation down the left side of New Flyer.



Photo 14 – Rear angle view of deformation to left side of New Flyer.



Photo 15 – Close-up view looking rear to front at left side New Flyer sheet metal buckled up accordion style.



Photo 16 – View from outside loading door of New Flyer looking at damaged and displaced driver seating area.



Photo 17 – Close up view of deformation and buckled seat belt of New Flyer driver.



Photo 18 – Close-up of deformed steering wheel of driver in New Flyer.

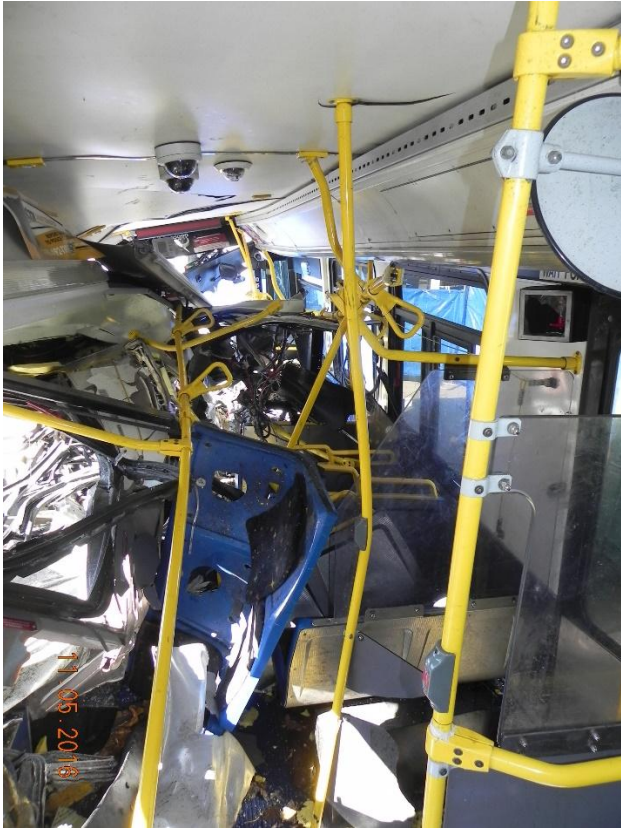


Photo 19 – Interior view looking from rear to front at intrusion to New Flyer.

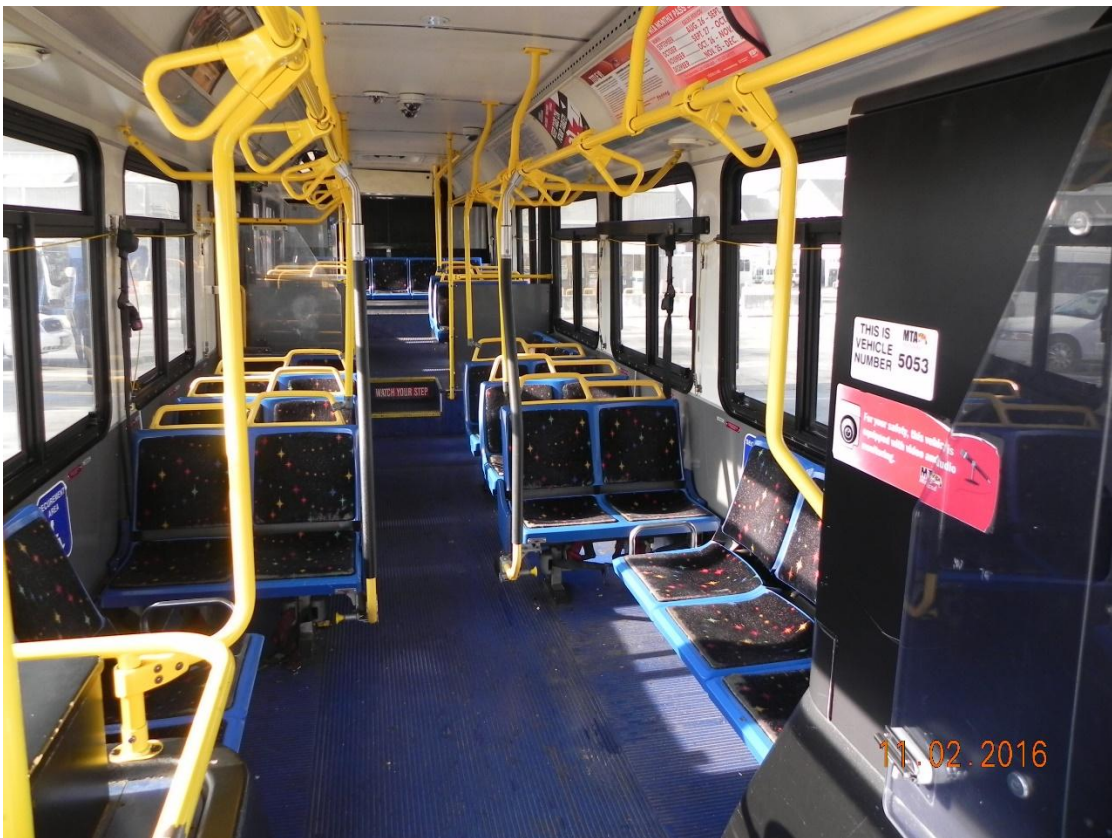


Photo 20 – Interior view looking from front to rear at exemplar of New Flyer.