



SURVIVAL FACTORS PHOTOGRAPHS

Palm Springs, California

HWY17MH005

(16 pages)



SF Photograph 1 shows a view of the front of the motorcoach. The front of the motorcoach exhibits severe damage with the entire windshield and front panel displaced. The internal components, wiring are visible. The driver seat, front passenger seats, front windows, and portions of the forward sidewalls are visibly displaced.



SF Photograph 2 shows a view of the front portion of the motorcoach on the driver side. Severe damage is visible at the sidewall and passenger window aft of the driver window and above the front tire. The sidewall is visibly cut away and portions of the interior can be seen, showing that the driver seat and passenger seats in the front are displaced. The front portion of the roof has collapsed and is visible with the driver side edge resting the floor, and the forward roof hatch open and visible.



SF Photograph 3 shows the forward passenger side portion of the motorcoach. Extensive damage is visible, with large portions of forward of the front wheels, including the loading door missing; the roof of the motorcoach has collapsed and is visible hanging with the driver side edge resting on the floor. The forward 3 passenger windows are broken out. There are cuts visible in the sidewall from first responder extrication operations.



SF Photograph 4 shows the aft portion of passenger side of the motorcoach. The sidewall of the motorcoach forward of the rear wheels exhibits a cutout portion from first responder extrication operations, and the 2 passenger windows in front of the aft passenger window are broken out.



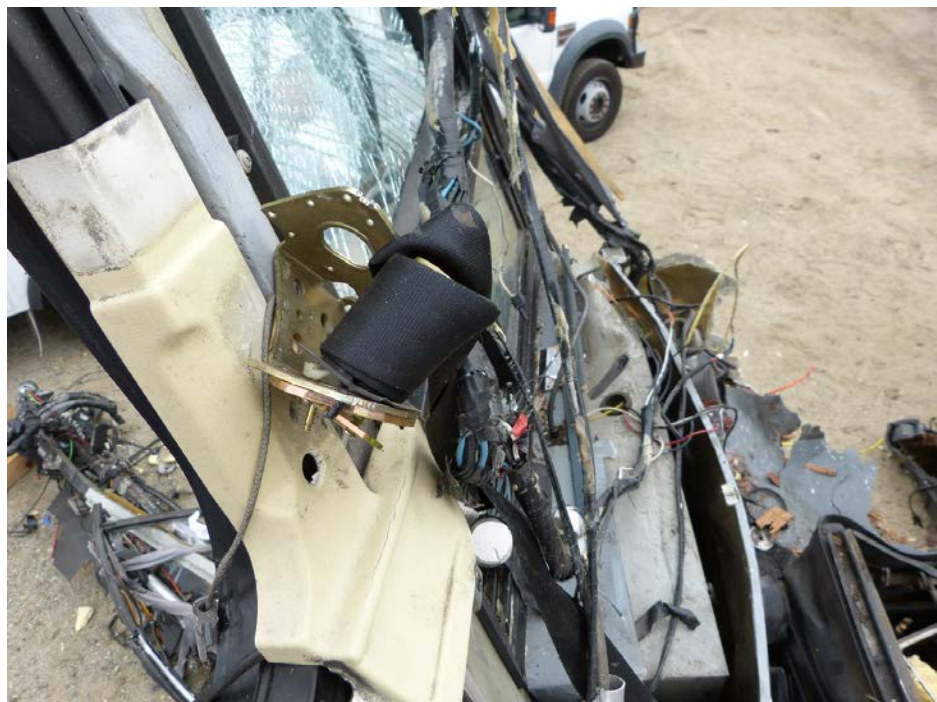
SF Photograph 5 shows a view of the front of the drivers seat. Severe deformation at the front middle section of the seat pan is visible. The lower portion of the seat frame is visible with extensive damage. The headrest is missing.



SF Photograph 6 shows an inboard side view of the driver seat. Severe deformation is visible at the middle portion of the seatpan, and the seatframe is severely deformed. The headrest is missing.



SF Photograph 7 shows the driver seat belt buckle attached to the lower portion of the driver seat frame, which remained attached to the floor of the motorcoach. The buckle is not connected to the belt, and the area surrounding the buckle is extensively damaged.



SF Photograph 8 shows the upper attachment point and inertia reel of the driver seat belt. The reel is damaged with the cover missing, the frame is fractured and seat belt webbing partially displaced from the reel.



SF Photograph 9 shows a view of the driver seat belt with the webbing, connector, and attachment bracket visible. The attachment bracket is dislodged and the webbing is twisted. Severe damage to the surrounding motorcoach structure is visible, and the sidewall aft of the belt attachment has a large section cut away by responders.



SF Photograph 10 shows the motorcoach steering wheel and portions of the steering column, steering gear, and portions of other surrounding components. The portions of the steering wheel that were found towards the front and back of the motorcoach have been crushed to the center of the wheel. The surrounding components exhibit severe damage.



SF Photograph 11 shows the forward side of the driver side privacy panel. The panel was dislodged from the motorcoach and found in the debris pile. It exhibits extensive damage including a fractured portion at the lower inboard corner and steel tubing around the upper and inboard sides is deformed.



SF Photograph 12 shows the aft side of the driver side privacy panel. The panel was dislodged from the motorcoach and found in the debris pile. It exhibits extensive damage including a fractured portion at the lower inboard corner and steel tubing around the upper and inboard sides is deformed.



SF Photograph 13 shows a view of the interior looking from the middle of the motorcoach towards the front. Extensive damage and debris is visible. The entire front and roof in this region of the motorcoach is displaced with a large section of the roof visible partially attached to the passenger sidewall.



SF Photograph 14 shows a view of the interior looking from near the back of the motorcoach towards the front. The middle section of the motorcoach interior is visible. Seats in the section are missing and there is extensive damage and debris visible. A section of the sidewall on the passenger side is visibly cut away, and most of the passenger windows are broken out.



SF Photograph 15 shows a view of the interior looking from the middle of the motorcoach towards the back. The middle of the motorcoach has missing seats, and seats remain in the aft portion of the motorcoach with several exhibiting deformation or damage. The luggage rack are visible, and exhibit severe damage. The passenger windows on the driver side are broken out, and 1 window remains on the passenger side. A section of the passenger sidewall that has been cut away by first responders is visible.



SF Photograph 16 shows a group of passenger seats that were dislodged from the motorcoach and found in the debris pile. The seats exhibit extensive damage, deformation, and evidence of the attachment points being cut by first responders.



SF Photograph 17 shows a group of passenger seats and components that were dislodged from the motorcoach and found in the debris pile. The seats exhibit extensive damage, deformation, and evidence of the attachment points being cut by first responders. The seats in the middle of the view show deformation likely resulting from occupant impact.



SF Photograph 18 shows a group of passenger seats and components that were dislodged from the motorcoach and found in the debris pile. The seats exhibit extensive damage, deformation, and evidence of the attachment points being cut by first responders. The seats in the middle of the view show a portion of the motorcoach sidewall that remains attached.



SF Photograph 19 shows a view of the truck driver seating area. The steering wheel, front portion of the driver seat cushion, portions of the controls and portions of the dashboard are visible. There is no apparent damage visible.



SF Photograph 20 shows a view of the truck driver seat and sleeper berth. Portions of the driver seatbelt visible, and is disconnected and resting on the seat. The seatback is fractured and resting in a reclined position onto the sleeper berth mattress.



SF Photograph 21 shows a detailed view of the truck driver seat backrest mechanism. The backrest support structure is fractured and separated at the location of an attachment bolt.