

Continental Airlines
Boeing 737-500
Denver International Airport
Denver, Colorado
December 20, 2008
DCA09MA021

National Transportation Safety Board
Washington, DC

Survival Factors Group Chairman's Report

Attachment 5

Photographs

6 pages



Photograph 1: Ground track of airplane from Runway 34R .



Photograph 2: Crash site as viewed from Taxiway WC.



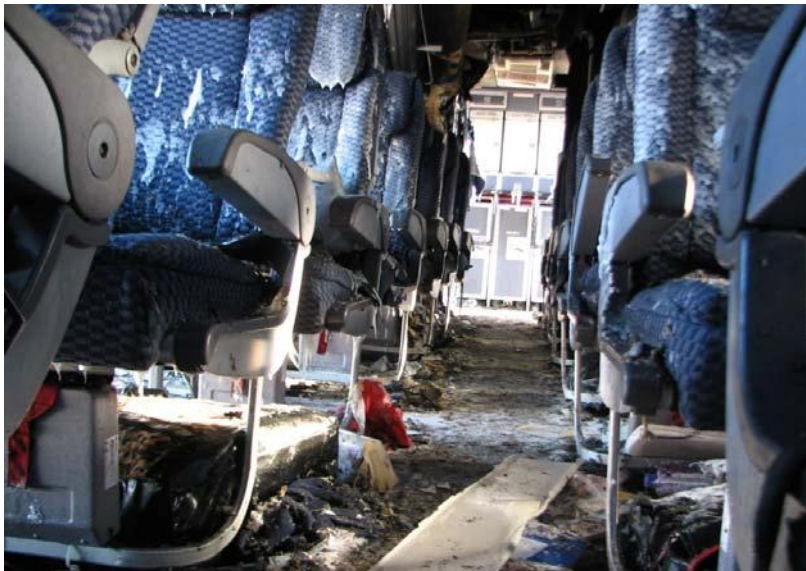
Photograph 3: Left side of airplane.



Photograph 4: Right side of airplane, with ARFF 4 fire station in the background.



Photograph 5: Flight attendant jumpseat at door 1L.



Photograph 6: Interior of airplane, looking aft.



Photograph 7: Right interior of airplane.



Photograph 8: Exterior burn damage.



Photograph 9: Exterior burn damage.



Photograph 10: Exterior burn damage.



Photograph 11: G4B galley in aft cabin, showing broken latch plate.



Photograph 12: Vestibule area at door 2R; galley carrier from aft galley on floor under aft-facing flight attendant jumpseat.