



Survival Factors Attachment 1 – Freedman Seating Company’s Fax to TDCJ

Penwell, Texas

HWY15MH004

(05 pages)



March 25, 2015

To whom it may concern,

This letter is to confirm that Freedman Seating Company Seats (including the CitiSeat), are designed, tested and built to comply with applicable Federal Motor Vehicle Safety Standards when properly installed in a vehicle. This includes, but is not limited to FMVSS 202, 207, 208, 210 and 302 where applicable.

A handwritten signature in black ink, appearing to read "Dan Cohen", is written over a horizontal line.

Dan Cohen
Vice President
Freedman Seating Company



4545 W. Augusta Blvd
Chicago, Illinois 60651
Tel: (773) 524-2440
FAX: (773) 252-7450

March 25, 2015

Freedman Seating CitiSeat passenger seats comply with the requirements of FMVSS 207 S5, FMVSS 210 S5.1, and FMVSS 302. The FMVSS 210 compliance applies to those CitiSeats mounted on to PW baseframe and leg(s).



Digitally signed by David Klopp
DN: cn=DavidKlopp,
o=Freedman Seating Co, st,
serialNumber=Klopp@freedman.com
c=US
Date: 2015.03.25 09:10:10 -0500

David Klopp
Director of Engineering

FREEDMAN

CitiShell Collection

Rugged, vandal resistant, comfortable and economical, that's the Freedman Seating prison collection. Our seats are the best way for you to transport tough passengers without the maintenance hassles and worries. Our seats are perfect for prisons, border patrols and other tough applications.

The CitiShell Seats

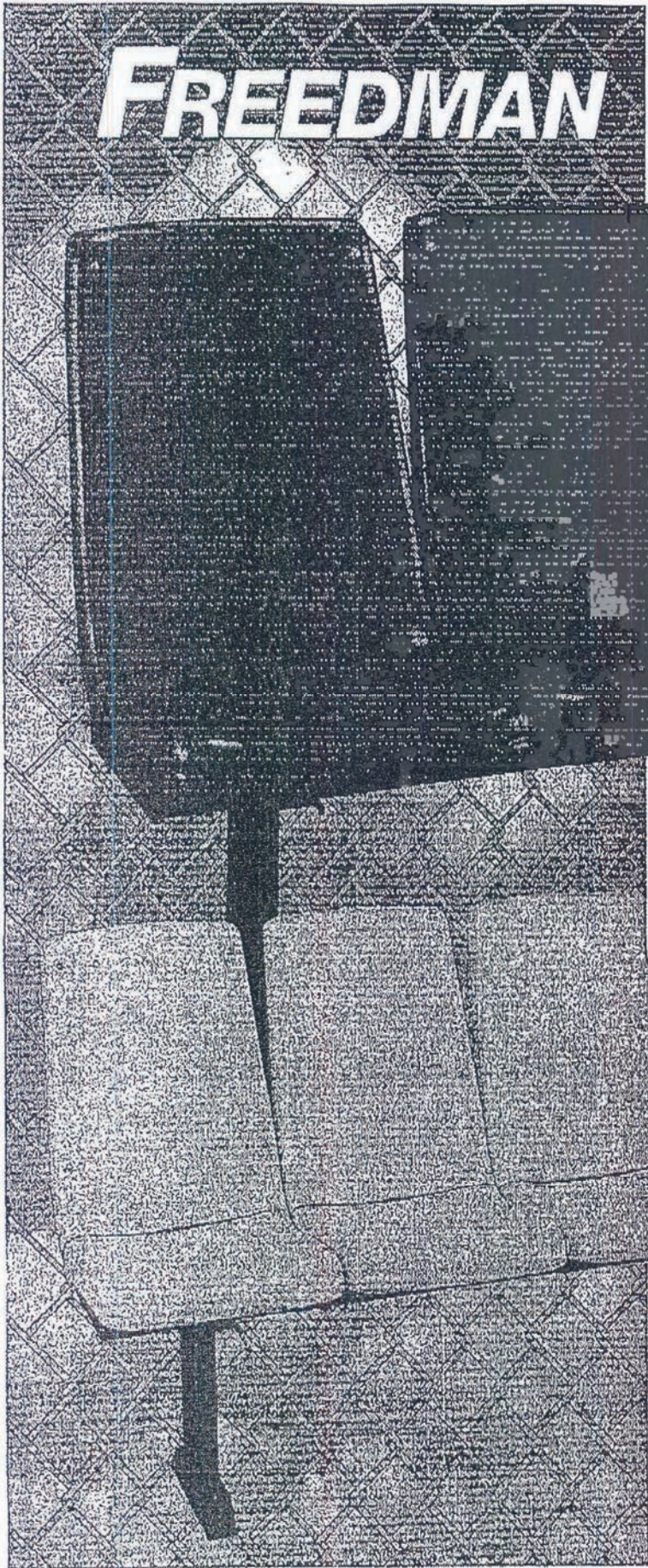
- 35" wide double
- 32" wide double
- 48" wide triple

Not Just Seats



Seating Solutions™

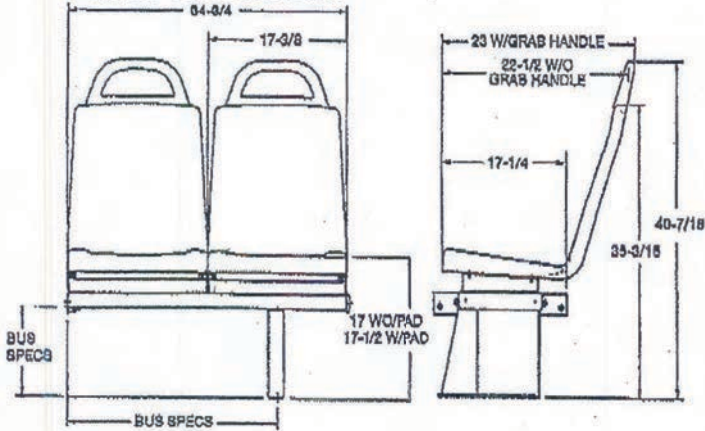
FREEDMAN
SEATING COMPANY



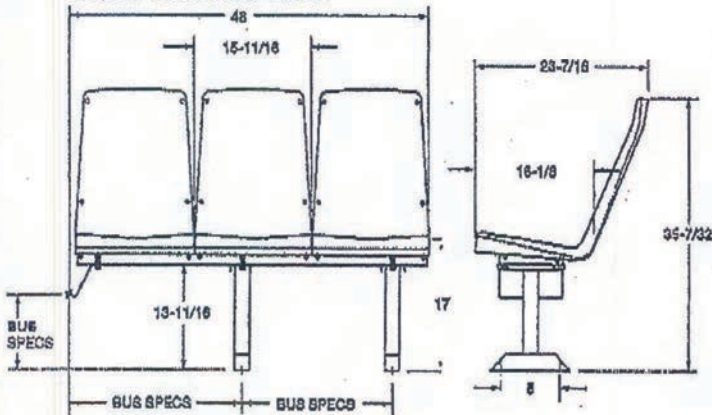
FREEDMAN

CitiShell Collection

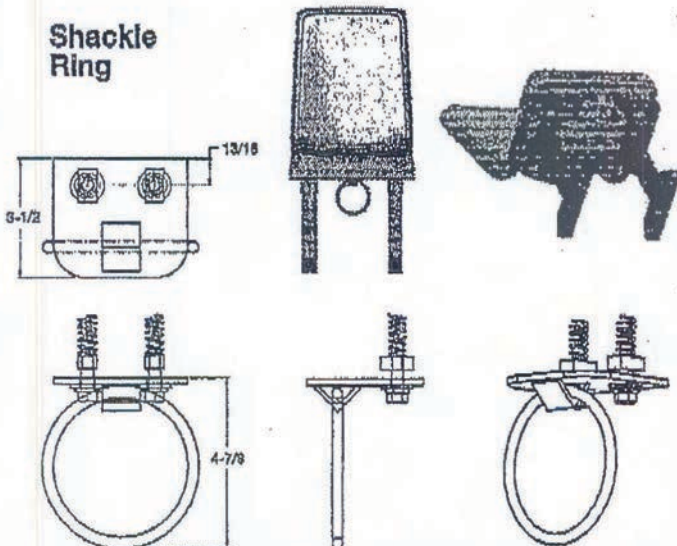
Double CitiShell Seat



Triple CitiShell Seat



Shackle Ring



The CitiShell Seat

Standard features:

- Made with injection molded reinforced ABS plastic
- 16 gauge 1" square tubing for internal support
- Anti-vandal/tamper resistant fasteners
- 32" and 35" wide doubles and 48" wide triples
- Seat drain holes on 35" seats
- Jig welded frames
- Custom wall mount brackets

Optional features:

- Shackle Rings
- Energy absorbing plastic hand holds
- Stainless steel hand holds
- Upholstered Inserts
- AV (anti-vandal) inserts with KEVLAR®
- Seat drain holes on upholstered inserts

Not Just Seats



Seating Solutions™

THE FEATHER WEIGHT SERIES BY



4545 W. Augusta Blvd., Chicago, IL 60651
 (773) 624-2440 (800) 443-4840 Fax (773) 252-7450
 WWW.FREEDMANSEATING.COM
 e-mail: sales@freedmanseat.com

We are constantly updating and improving our seats; therefore we reserve the right to change or modify specifications or materials without notice. All Freedman Seating Company seats meet or exceed FMVSS standards.