

DOCKET NO. SA-519

EXHIBIT NO. 6E

**NATIONAL TRANSPORTATION SAFETY BOARD
WASHINGTON, D.C.**

PASSENGER INFORMATION CARD

(4 pages)

SUPER 80

American Airlines®

FOR YOUR SAFETY

ATTENTION: IF YOU ARE SEATED IN AN EXIT ROW AND CANNOT UNDERSTAND CREW COMMANDS OR THE INFORMATION ON THIS CARD, PLEASE CONTACT A FLIGHT ATTENDANT.

ATTENTION: SI VOUS ÊTES ASSIS PRÈS D'UNE ISSUE DE SECOURS ET NE COMPRENEZ PAS LES INSTRUCTIONS DE L'EQUIPAGE OU LES INFORMATIONS QUI SE TROUVENT SUR CE FORMULAIRE, VOUS ÊTES PRIÉS DE BIEN VOULOIR VOUS METTRE EN CONTACT AVEC LE PERSONNEL DU BORD.

ACHTUNG: FALLS SICH IHR SITZ IN EINER REIHE AN EINEM DER AUSGÄNGE BEFINDET UND SIE SCHWERGÄLTIGEN HABEN, DIE ANWEISUNGEN DER BESATZUNG ODER DIE INFORMATIONEN AUF DIESE KARTEN ZU VERSTEHEN, SETZEN SICH BITTE MIT EINEM FLUGRECHLEITER IN VERBINDUNG.

ATENCION: SI USTED ESTA SENTADO EN UNA FILA DE SALIDA Y NO ENTENDE LAS INDICACIONES DE LA TRIPULACION O LA INFORMACION EN ESTA TARJETA, POR FAVOR PONGASE EN CONTACTO CON ALGUIEN DE LA TRIPULACION DEL SERVICIO.

お客様に申し上げます。お客様の搭乗席が非常口の列にあって、乗務員の指示やこのカードの記載内容が理解できない場合は、搭乗員までお申し出下さいませ。

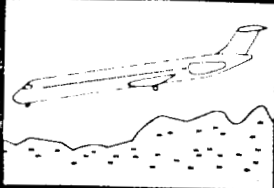
● When you are seated in an exit row, you may be called upon to open the exit and assist fellow passengers in exiting the aircraft if a crew member is unavailable to do so. Because of this, and for the benefit of all passengers, Federal Law requires that passengers seated in exit rows must meet the following criteria:

IF YOU ARE SEATED IN AN EXIT ROW PLEASE ASK TO BE RESEATED IF:

- You lack sufficient mobility, strength, or dexterity in both arms and hands, and both legs to expediently reach the emergency exit, remove obstructions, manipulate the emergency exit and exit slide operating mechanisms, open and stow the exit door, exit expediently, stabilize the escape slide, and assist others in getting off the escape slide.
- You do not understand these instructions, or lack sufficient visual capacity, require aids beyond and in front of your eyes, or have a hearing aid, or require aids beyond a hearing aid, to understand these and crew member instructions or to impart information orally to others.
- You have a responsibility such as to a minor child or a nondisabled condition that might prevent you from performing the actions in an emergency condition that might cause you to suffer bodily harm while performing these functions.
- You do not wish to perform these functions.
- You are less than 15 years of age.

EXIT OPERATION: ALWAYS LISTEN TO THE FLIGHT ATTENDANT'S INSTRUCTIONS.

Please Do Not Remove This Card From Airplane



FIRE



SMOKE

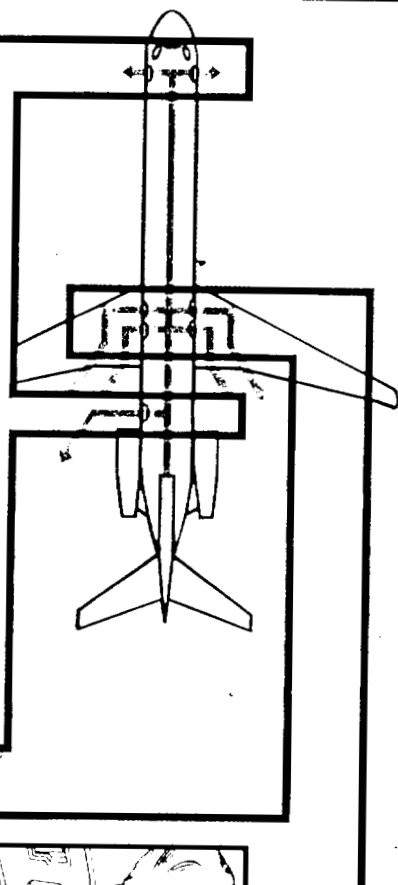
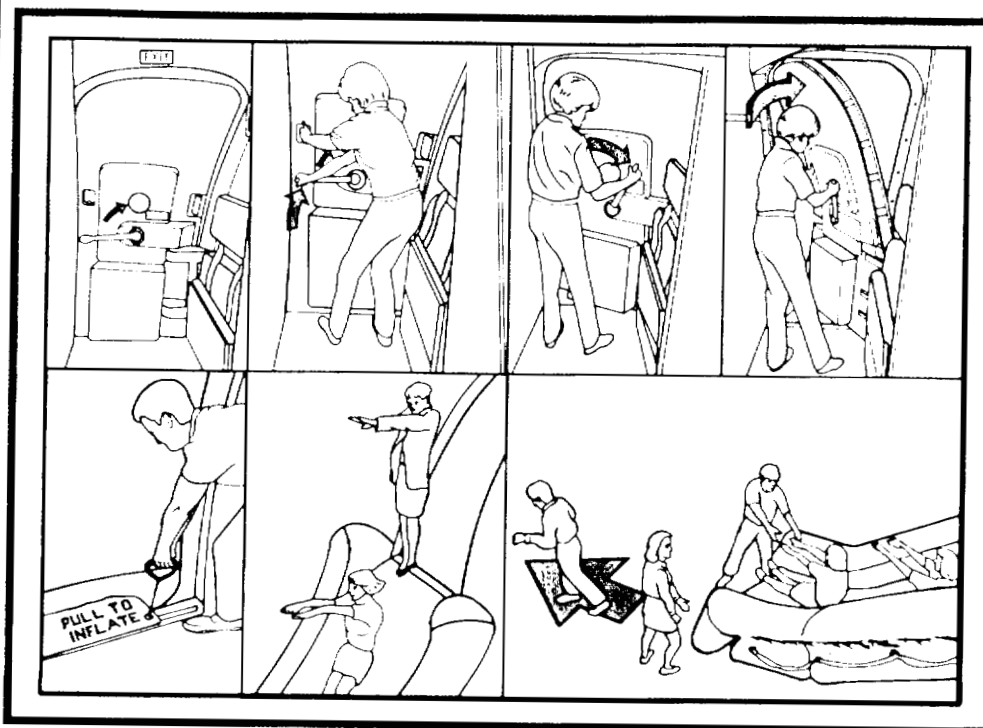


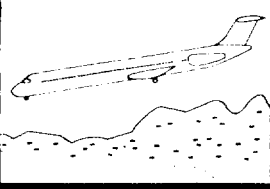
DEBRIS

EXIT OPERATION

ASSESS OUTSIDE CONDITIONS - OPENING EXIT INCREASES THE HAZARD TO PASSENGERS - DO NOT OPEN

LAND EVACUATION

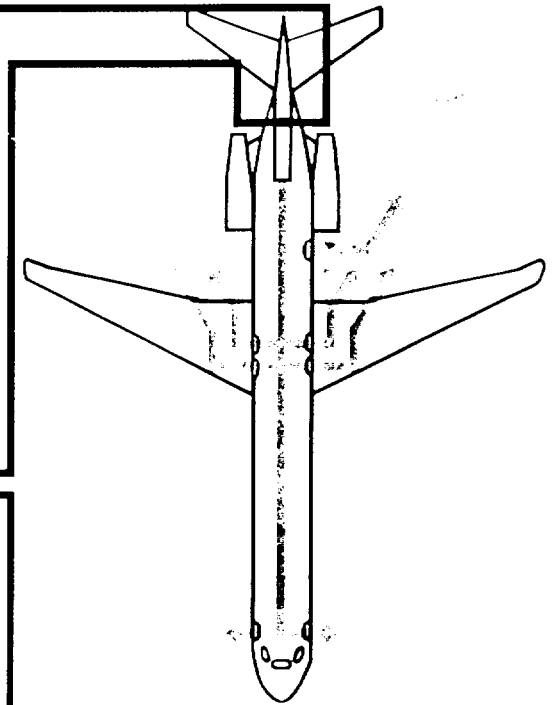
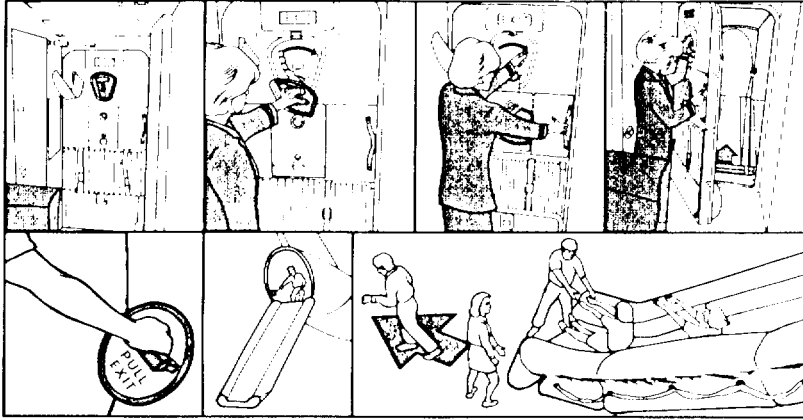




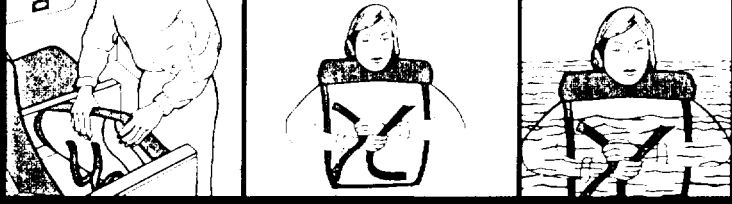
EXIT OPERATION

ASSESS OUTSIDE CONDITIONS OF OPENING EXIT. DO NOT OPEN THE HAZARD TO PASSAGE NEVER DO NOT OPEN.

LAND EVACUATION

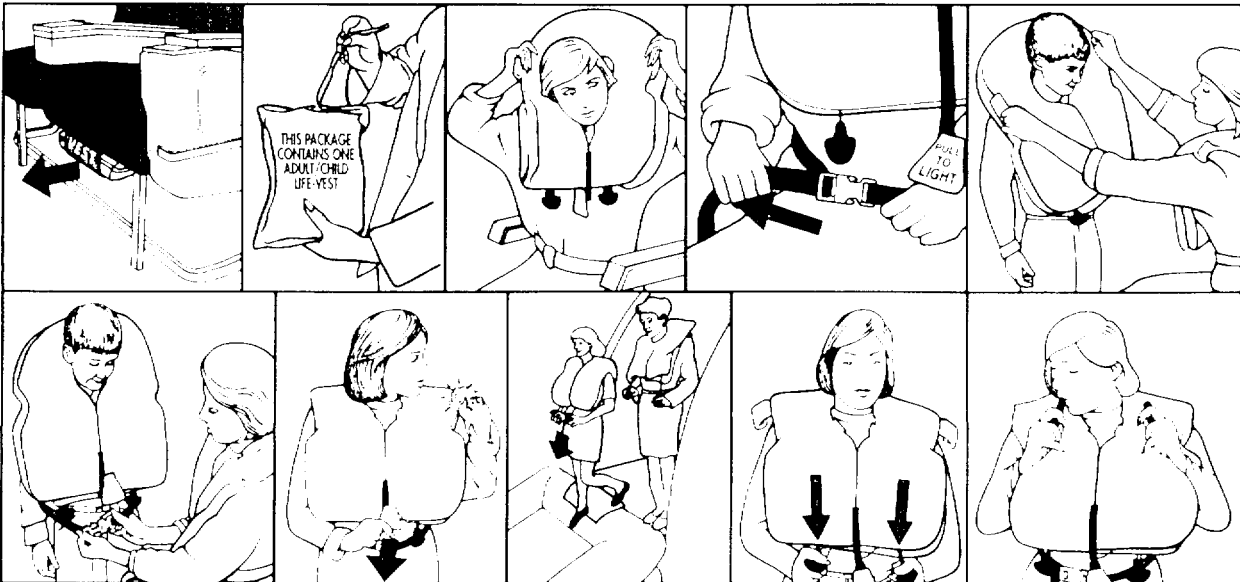


WATER EVACUATION



WATER EVACUATION

On Overwater Aircraft

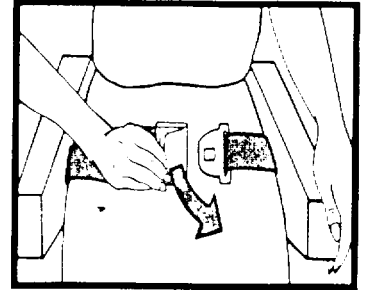
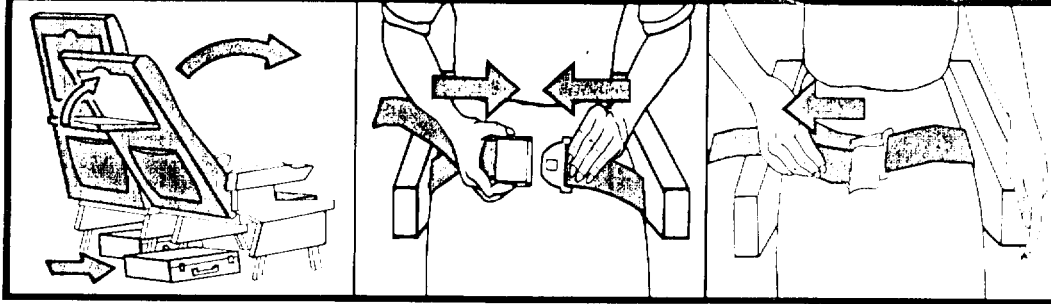




THIS IS A NON-SMOKING FLIGHT



DURING TAKE OFF, LANDING, AND SURFACE TRAVEL



O₂ **OXYGEN**

FOR YOUR SAFETY

stay **SEATED**
stay **BUCKLED**
stay **SAFE!**

USE CAUTION WHEN OPENING OVERHEAD BIN

EMERGENCY BRACE POSITIONS

EMERGENCY EXIT LIGHTING

OR