

Carson Helicopter Services  
Weaverville, California  
August 5, 2008  
LAX08PA259

**National Transportation Safety Board**  
Washington, D.C.

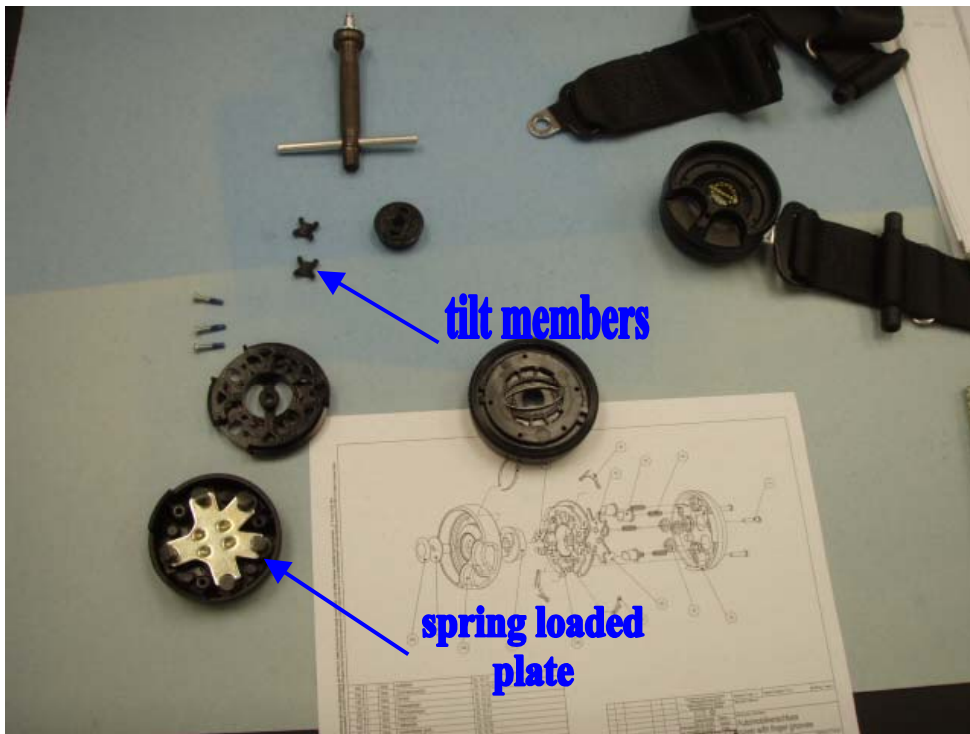
**Attachment 5**

N612AZ Restraint Photographs

10 Pages



1. Photograph of a Schroth (SL 12.5) restraint unbuckled with the (occupant's left) fixed restraint installed in the buckle.



2. View of a disassembled Schroth SL12.5 buckle, showing its internal components.



3. Photograph of the restraint cataloged as #1.  
Note: All latches are engaged.



4. Photograph of the restraint cataloged as #2.  
Note: All latches are engaged.

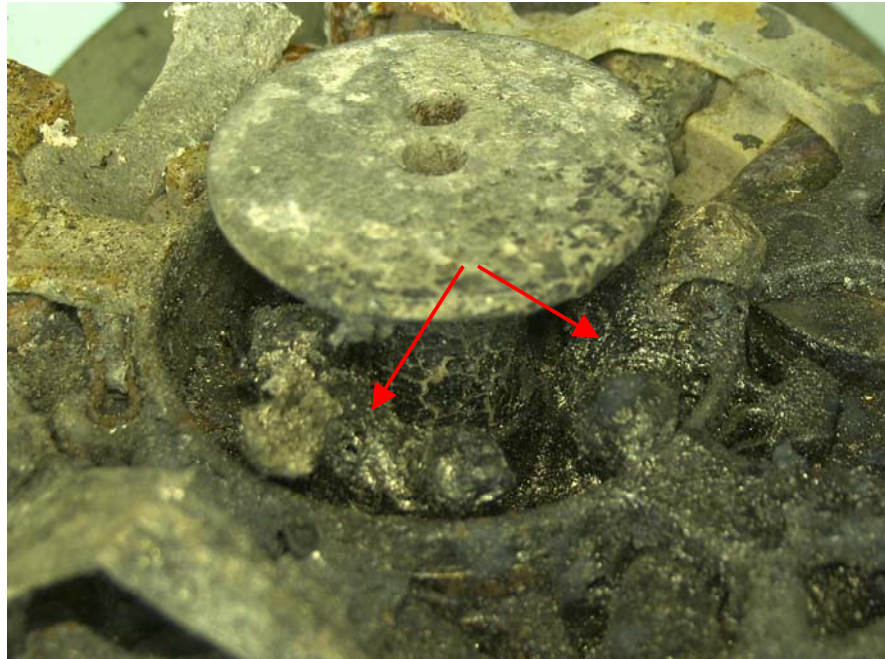


5. Photograph of the restraint cataloged as #3.  
Note: All latches are engaged.



6. Photograph of the restraint cataloged as #4 buckle.  
Note: All latches are engaged.





7. Close up photograph of the restraint cataloged as #4.  
Note: The red arrows point to two of the three tilt members.



8. Photograph of a flight crewmember (Pacific Scientific) restraint cataloged as #5.  
Note: All latches were found engaged in the correct positions.



9. Photograph of the restraint cataloged as #6.  
Note: All latches engaged except the left (fixed) latch, which exhibited a shiny unscorched area where the latch would have engaged into the buckle.



10. Photograph of restraint cataloged as restraint #7.  
Note: Red arrow points to the right lap restraint latched in the crotch engagement position.





11. Photograph of restraint buckled cataloged as #8.

Note: The accident buckle is facing opposite that of the exemplar buckle, and its right lap latch is latched 180 degrees opposite its correct engagement position thereby twisting the lap belt as shown with the Schroth restraint above.



12. Photograph of buckle cataloged as #9.

Note: The left (fixed) latch is engaged and all other latches are not engaged.



13. View of the restraint cataloged as #10.  
Note: The buckle is face down, and its right lap latch is latched 180 degrees opposite its correct engagement position.



14. Photograph of buckle cataloged as #11.  
Note: The lap latch is engaged and the shoulder latches are not engaged.





15. Photograph of buckle cataloged as #12.  
Note: All latches engaged in correct positions.



16. View of the restraint cataloged as #13.  
Note: Right shoulder harness is unlatched, and the left shoulder harness is latched 180 degrees opposite its correct engagement position.



17. Restraint cataloged as #14.

Note: The right lap latch is engaged and the left (fixed) lap and shoulder restraints were not latched.



18. Photo of the restraint cataloged as #15 found during the October 28, 2008 wreckage exam. The buckle's lap and shoulder restraints are latched.





19. Photograph of the restraint cataloged #16 found during the October 28, 2008 wreckage exam. Note: The right lap latch was found latched 180 degrees opposite its correct engagement position, left shoulder restraint was not engaged but exhibited a shiny un-scorched area where the latch would have engaged into the buckle, and the left (fixed) lap latch pin fell out of the buckle and the left lap latch separated from the buckle.