

Comair, Inc.  
Lexington, KY  
August 27, 2006  
DCA06MA064

**NATIONAL TRANSPORTATION SAFETY BOARD  
WASHINGTON, D.C.**

ATTACHMENT 12

JEPPESEN AND NACO LEX AIRPORT DIAGRAM

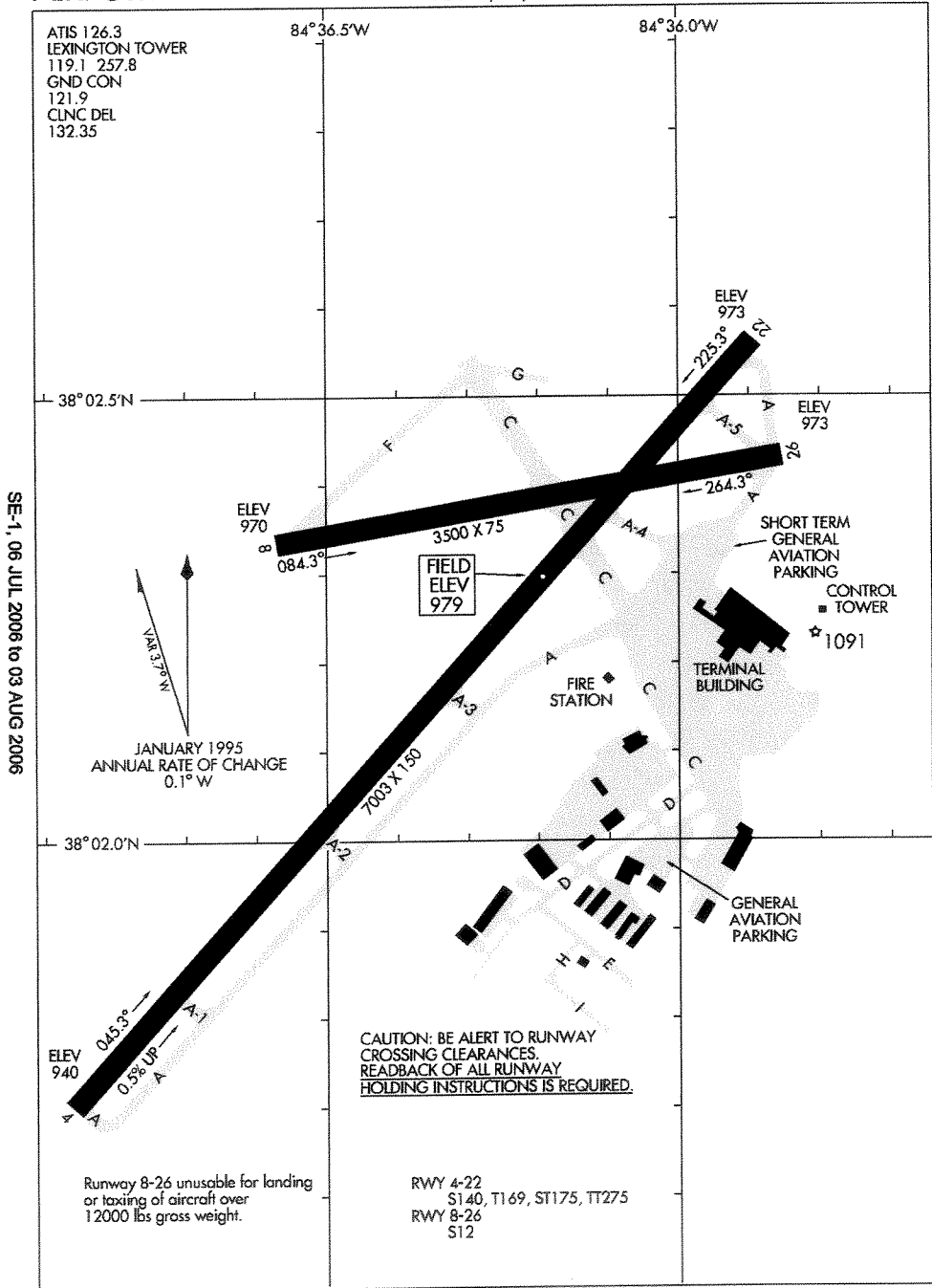
4 Pages

05244

# AIRPORT DIAGRAM

AL-697 (FAA)

LEXINGTON /BLUE GRASS (LEX)  
LEXINGTON, KENTUCKY



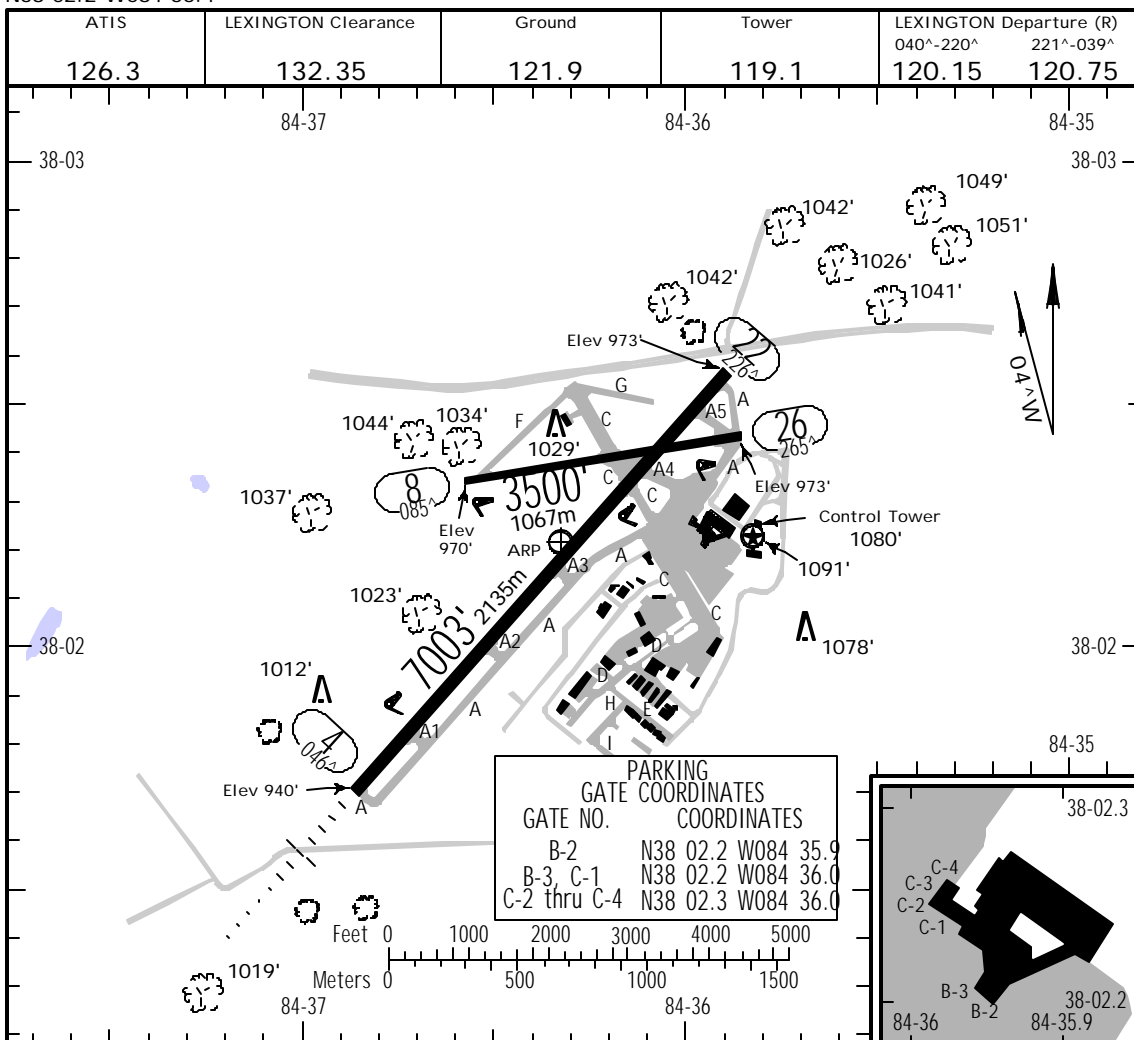
SE-1, 06 JUL 2006 to 03 AUG 2006

SE-1, 06 JUL 2006 to 03 AUG 2006

# AIRPORT DIAGRAM

05244

LEXINGTON, KENTUCKY  
LEXINGTON /BLUE GRASS (LEX)



RWY		ADDITIONAL RUNWAY INFORMATION			
		USABLE LENGTHS		TAKE-OFF	WIDTH
		Threshold	Glide Slope		
4 22	HIRL CL TDZ SSALR VASI-L grooved RVR		6004' 1830m		
	HIRL CL REIL VASI-L grooved		5946' 1812m		
8 1 26	MIRL			75' 23m	
	MIRL REIL				

**1** Unusable for landing or taxiing of aircraft over 12,000 lbs GWT.

TAKE-OFF & OBSTACLE DEPARTURE PROCEDURE			FOR FILING AS ALTERNATE		
All Rwys			ILS Rwy 4 ILS Rwy 22	LOC Rwy 4 LOC Rwy 22 VOR-A	Other
Adequate Vis Ref		STD			
1 & 2 Eng	RVR 16 or 1/4	RVR 50 or 1	600-2	800-2	NA
3 & 4 Eng		RVR 24 or 1/2			
		A			
		B C D			

OBSTACLE DP: Rwys 4 & 8, climb runway heading to 1400' before turning.

# AIRPORT DIAGRAM

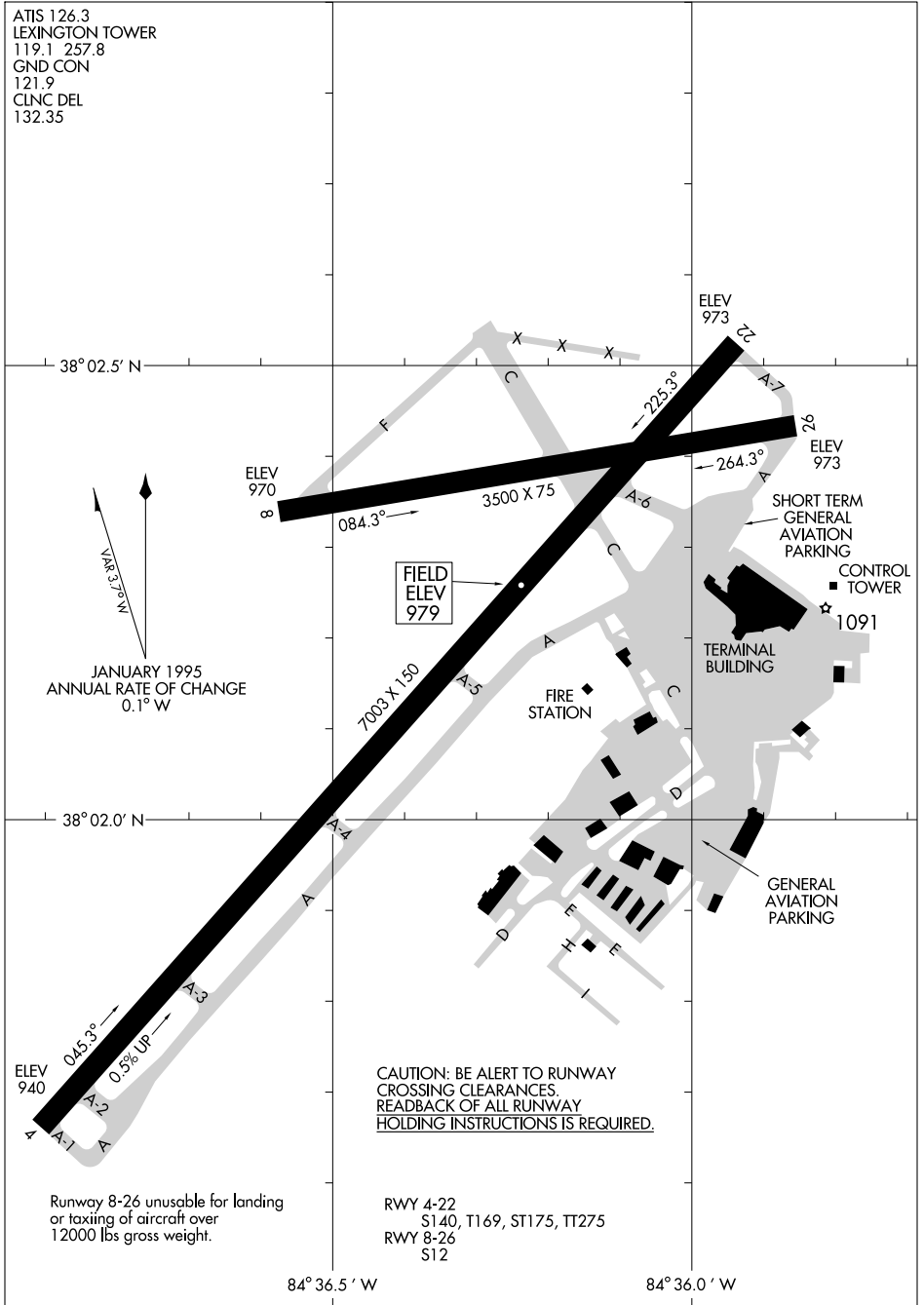
AL-697 (FAA)

LEXINGTON / BLUE GRASS (L.E.X)  
LEXINGTON, KENTUCKY

ATIS 126.3  
LEXINGTON TOWER  
119.1 257.8  
GND CON  
121.9  
CLNC DEL  
132.35

SE-1, 03 AUG 2006 to 31 AUG 2006

SE-1, 03 AUG 2006 to 31 AUG 2006



**CAUTION: BE ALERT TO RUNWAY CROSSING CLEARANCES. READBACK OF ALL RUNWAY HOLDING INSTRUCTIONS IS REQUIRED.**

RWY 4-22  
S140, T169, ST175, TT275  
RWY 8-26  
S12

Runway 8-26 unusable for landing or taxiing of aircraft over 12000 lbs gross weight.

# AIRPORT DIAGRAM

