

NATIONAL TRANSPORTATION SAFETY BOARD

Office of Aviation Safety
Washington, D.C. 20594

SURVIVAL FACTORS / OPERATIONS

WPR11MA454

Attachment 4 –2011 National Championship Air Races Unlimited Race Course

(1 Page)

UNLIMITED CLASS OPTIMUM RACE PATH CRITERIA = 500 MPH @ 3.5 G's

LEGEND

UNLIMITED COURSE

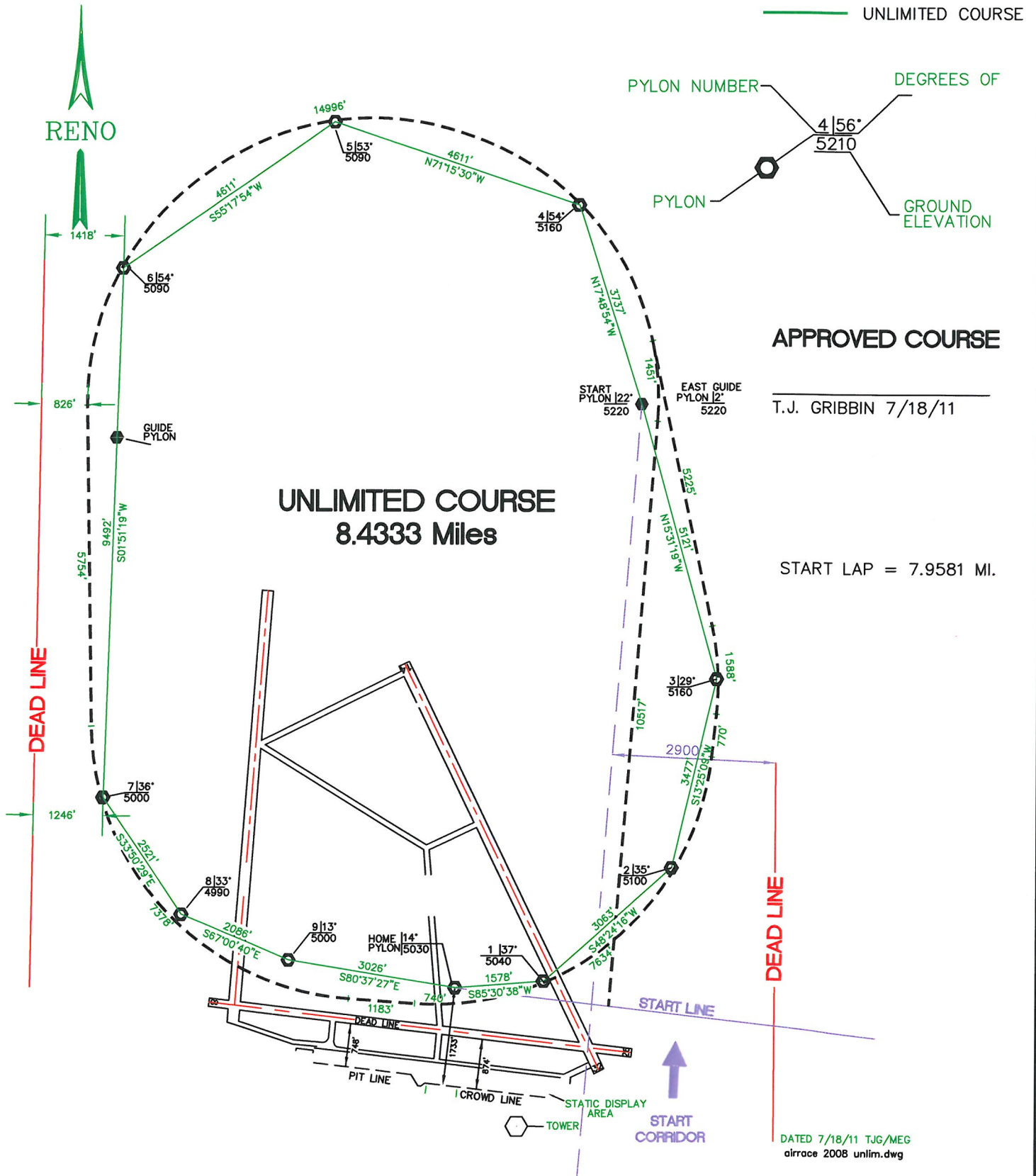
PYLON NUMBER
 DEGREES OF
 PYLON
 GROUND ELEVATION

APPROVED COURSE

T.J. GRIBBIN 7/18/11

START LAP = 7.9581 MI.

UNLIMITED COURSE
8.4333 Miles



DATED 7/18/11 TJG/MEG
airrace 2008 unlim.dwg