

Docket No. SA-532

Exhibit No. 7-C

NATIONAL TRANSPORTATION SAFETY BOARD

Washington, D.C.

Structures Group Chairman's
Attachment 2 to the Factual Report
Photos

(30 Pages)



NATIONAL TRANSPORTATION SAFETY BOARD

Office of Aviation Safety
Washington, D.C. 20594

STRUCTURES GROUP CHAIRMAN'S FACTUAL REPORT

DCA09MA026

May 12, 2009

Attachment 2
Photos

Accident #: DCA09MA026 | N106US

Description: Airplane wreckage.



Photo 1

Accident #: DCA09MA026 | N106US

Description: Radome damage.



Photo 2

Accident #: DCA09MA026 | N106US
Description: Soft body impact damage to lower side of the radome.



Photo 3

Accident #: DCA09MA026 | N106US

Description: Left hand side forward fuselage soft body impact damage.

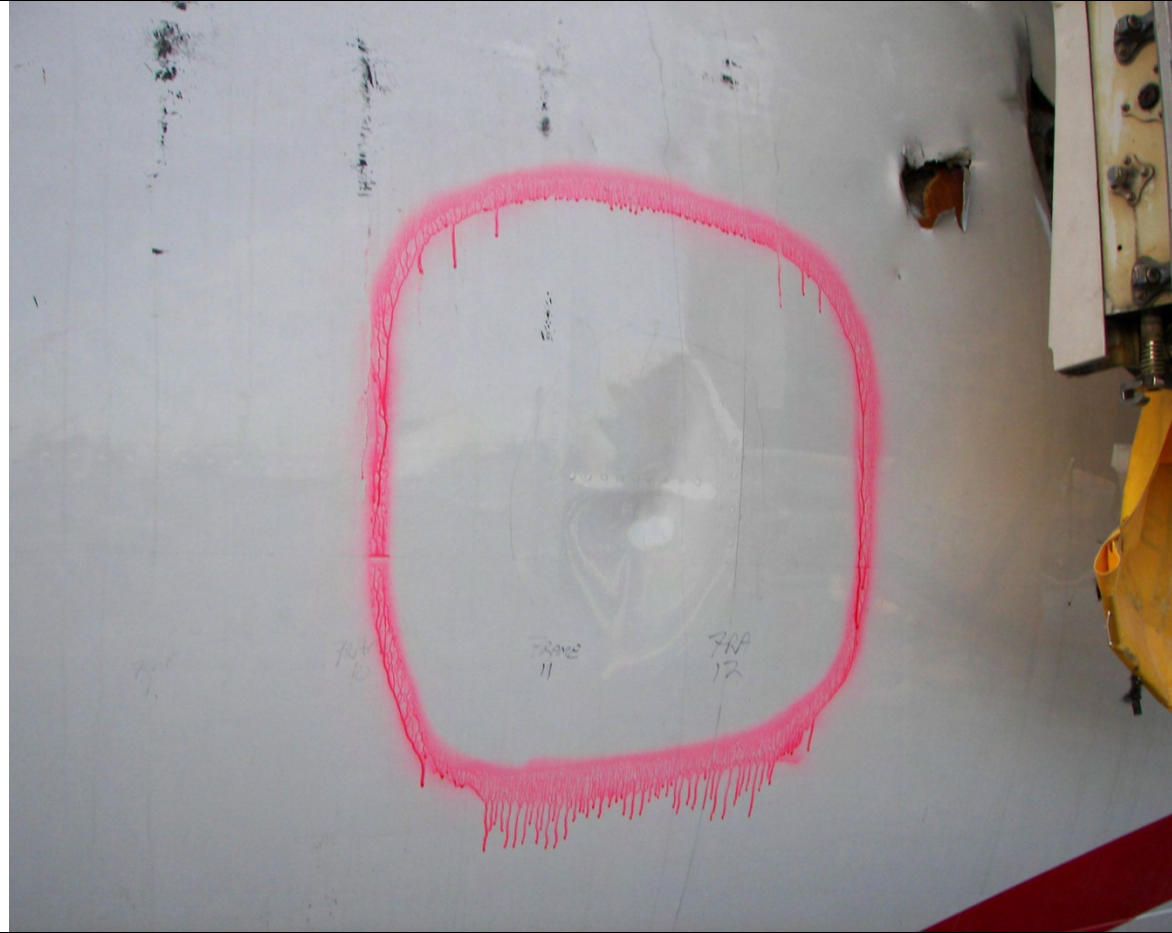
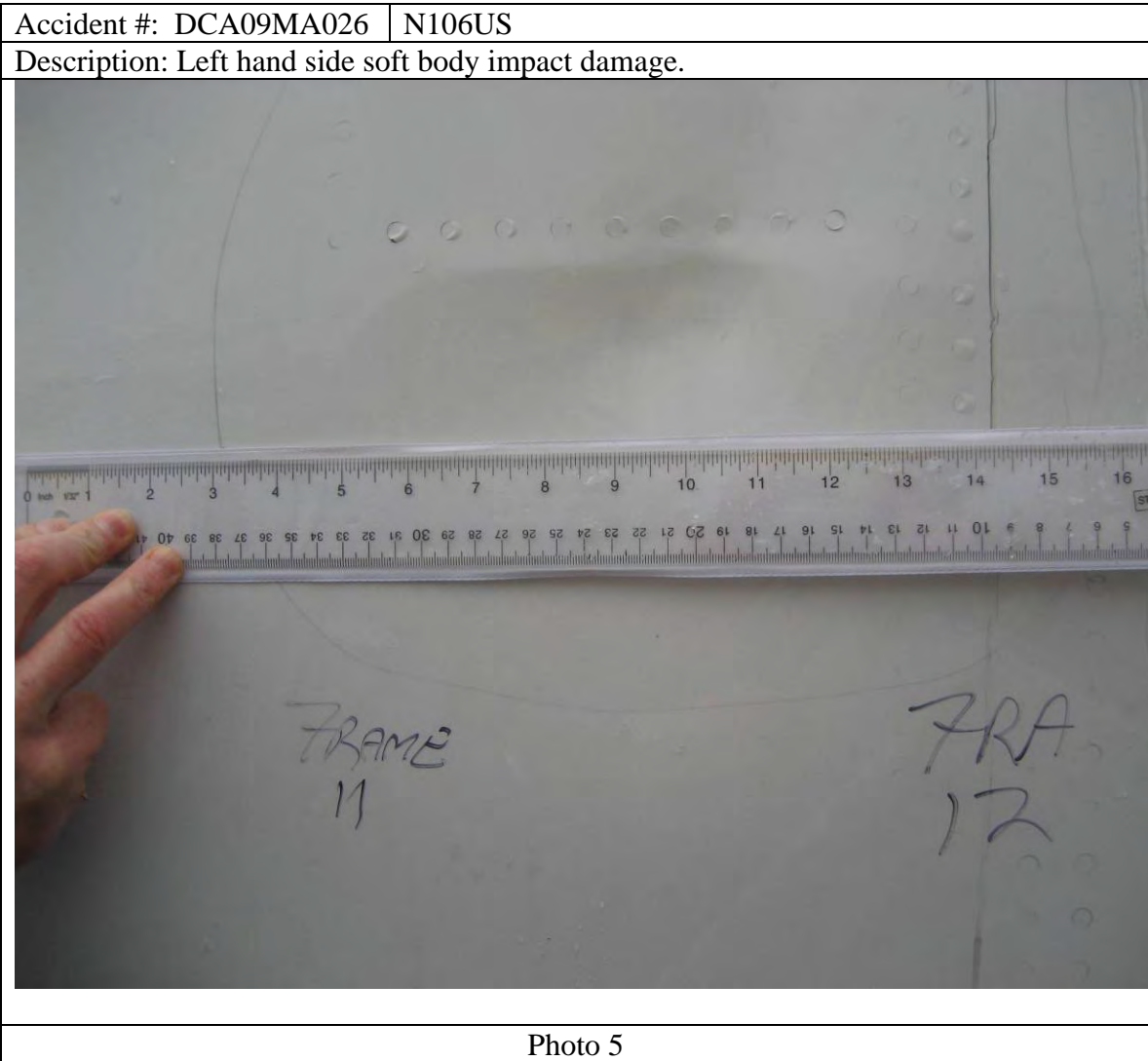


Photo 4



Accident #: DCA09MA026 | N106US

Description: Left hand side forward fuselage damage FR1 to FR12.



Photo 6

Accident #: DCA09MA026 | N106US

Description: Left hand side forward fuselage damage aft of the L1 door.



Photo 7

Accident #: DCA09MA026 | N106US

Description: Right hand side fuselage damage.



Photo 8

Accident #: DCA09MA026	N106US
Description: Left hand side aft lower fuselage damage.	



Photo 9

Accident #: DCA09MA026 | N106US

Description: Right hand side fuselage damage between frames 56 to 64 and stringers 23 to 41.



Photo 10

Note: Measurements are approximate only. Measurements were taken with rope to approximate the normal fuselage contour and a tape measure to measure the perpendicular depth from the rope.

Accident #: DCA09MA026	N106US
Description: Right hand side inside fuselage damage FR56 to 64 / STR23 to 41RH.	
 A photograph showing the interior of an aircraft fuselage with significant structural damage. The image displays a complex network of metal beams, pipes, and wiring. A large, dark, irregularly shaped object, possibly a piece of debris or a damaged component, is visible in the center. The surrounding structure appears distorted and bent, indicating a failure or impact. The lighting is somewhat dim, highlighting the metallic surfaces and the extent of the damage.	
Photo 11	

Accident #: DCA09MA026	N106US
Description: Aft pressure bulkhead.	



Photo 12

DCA09MA026

N106US

Description: Frame 57 looking aft at the tail cone damage.



Photo 13

DCA09MA026

N106US

Description: Rear tail cone damage looking aft from frame 70.



Photo 14

DCA09MA026

N106US

Description: Tail cone damage.



Photo 15



DCA09MA026

N106US

Description: Left hand side Slat #2 damage.



Photo 17

DCA09MA026

N106US

Description: Left hand side Slats #4 and #5 before (present) and after recovery (missing).



Photo 18

DCA09MA026

N106US

Description: Left hand inboard flap damage.



Photo 19

DCA09MA026

N106US

Description: Right hand side wing leading edge recovery damage.



Photo 20

DCA09MA026	N106US
Description: Right hand Slat #3 damage.	
	
Photo 21	

DCA09MA026

N106US

Description: Missing right hand aileron.



Photo 22

DCA09MA026

N106US

Description: Right hand inboard and outboard flap damage.



Photo 23

DCA09MA026

N106US

Description: Left hand pylon damage.



Photo 24

DCA09MA026

N106US

Description: Right hand pylon damage.



Photo 25

DCA09MA026

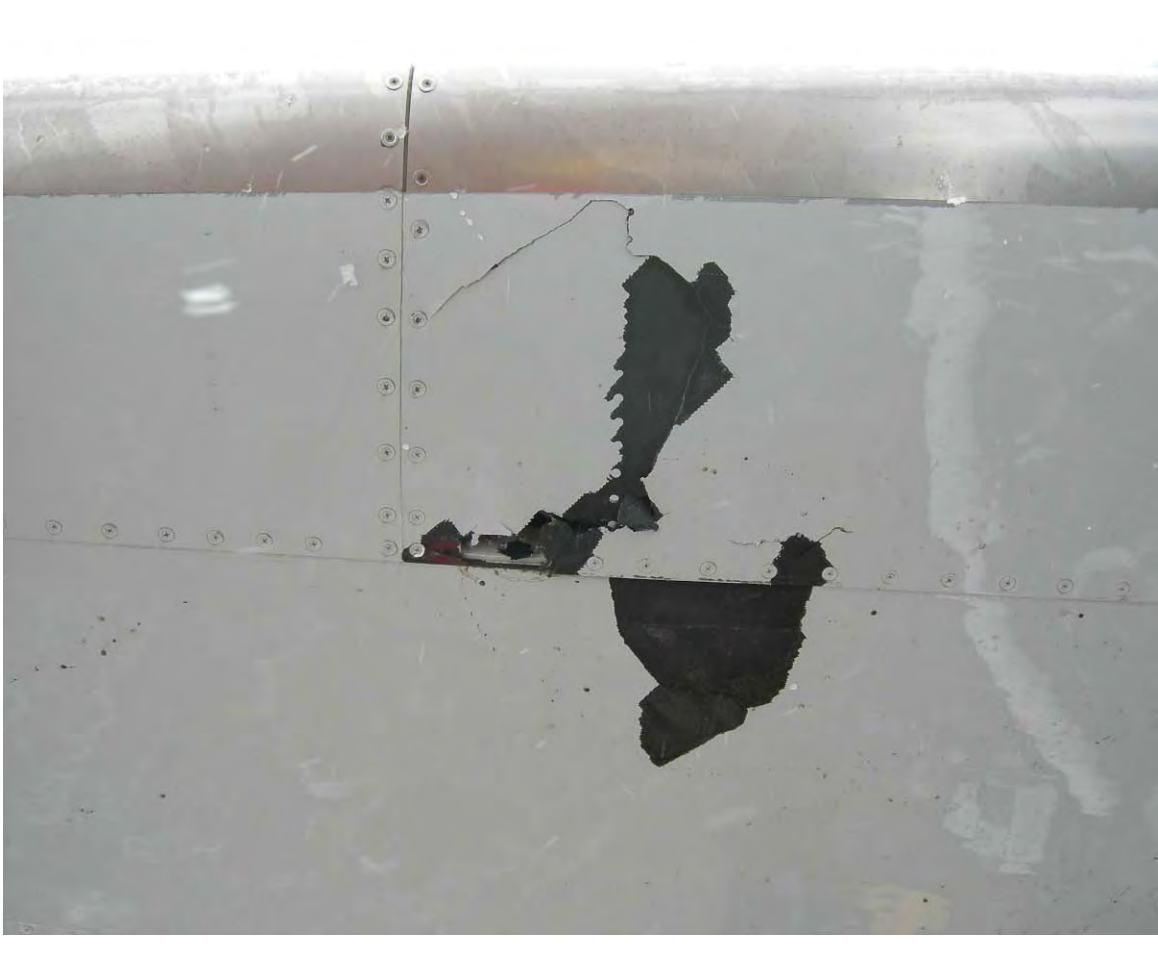
N106US

Description: Right hand pylon, aft bulkhead fracture.



Photo 26

DCA09MA026	N106US
Description: Vertical stabilizer rudder damage.	
	
Photo 27	

DCA09MA026	N106US
Description: Right hand horizontal stabilizer lower skin panel fracture.	
	
Photo 28	

DCA09MA026

N106US

Description: Passenger door R1 before and after recovery.



Photo 29