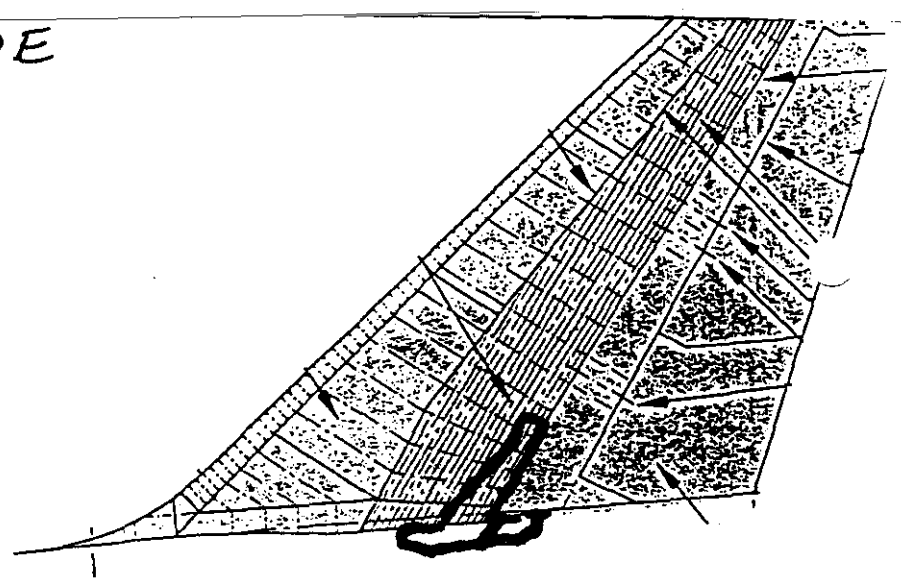


V-9

RIGHT SIDE

GREEN TAG # C1658



V9 - SKIN, STRINGERS AND ATTACH BULKHEAD FOR VERTICAL FIN RIGHT SIDE. PANEL GOES FROM REAR SPAR FORWARD TO STRINGER #7. ^{RH 12/12/96} THE LOWER BULKHEAD IS ATTACHED FROM STRINGER 9 TO AFT END OF BEAM. FIBERGLASS ^{RH 12/12/96} PANEL SEPERATED FROM REAR SPAR CHORD AT AFT ~~ALL FAILED~~ ~~ALONG~~ ~~CONDS~~ ~~STRINGER 6~~ ~~PAST~~ ~~STRIKERS~~ ~~FORWARD~~. ^{RH 12/12/96}

THE LOWER BULKHEAD SEPERATED AT STRINGER 9 WHERE BOLTS FAILED ~~IN~~ ~~FASTENERS~~. ^{RH 12/12/96} VERTICAL STRAPS BELOW THE BULKHEAD ARE BENT AFT. ^{OUTB'D} ^{RH 12/12/96} TOP OF PANEL PEELED AFT AND ~~BACK~~ STRINGERS SEPERATED FROM PANEL ABOVE RIB 2. PART IS SMOOTHED ON EXTERIOR & INTERIOR SURFACE AND FRACTURE SURFACE AT STRB COMMON TO SKIN IS DARKENED. ^{RH 12/12/96}

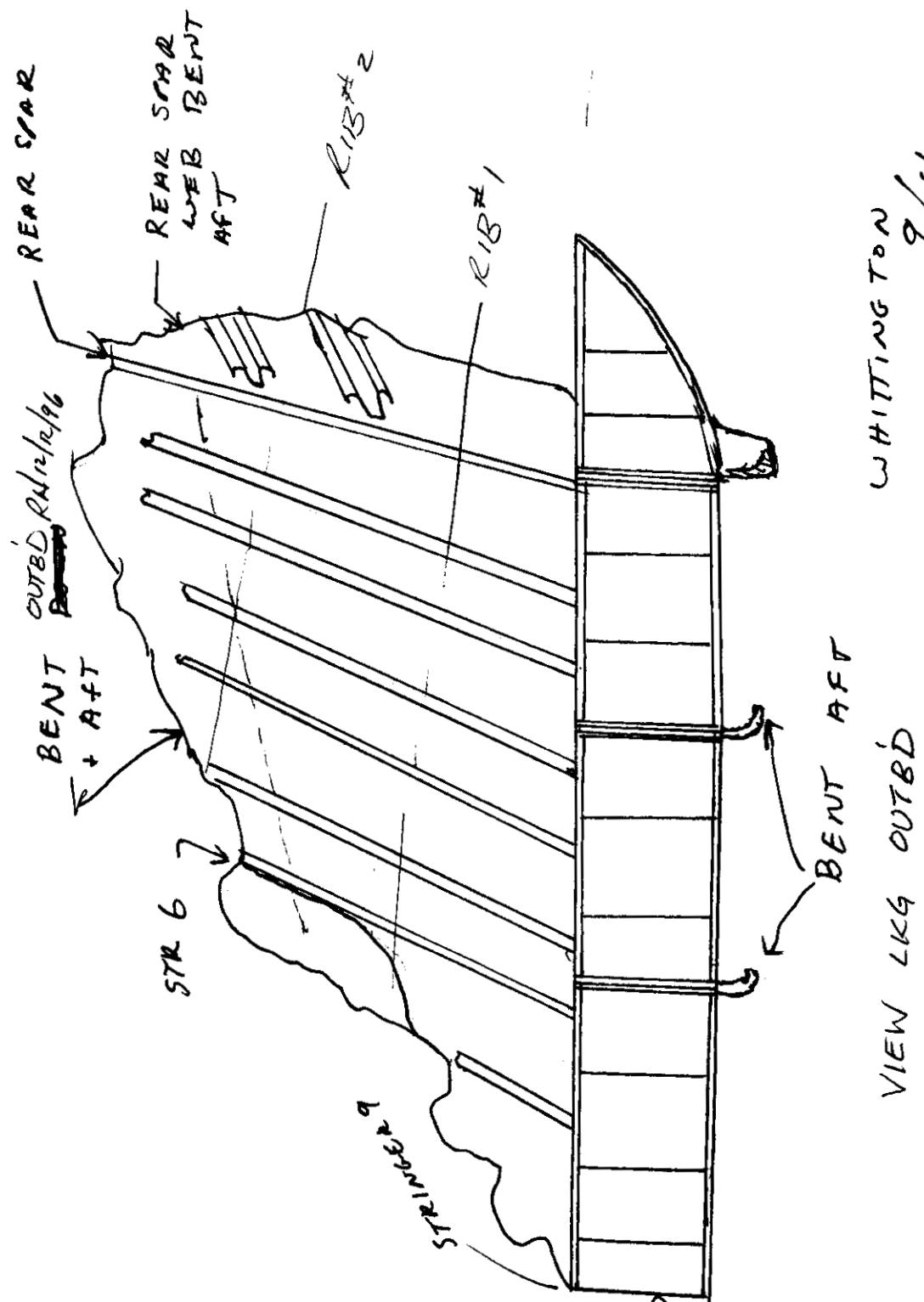
Dennis Santiago IAM
 10-22-96 12-12-96
 R Hanover TBC
 12/12/96

[Signature]
 12-26-96

[Signature]
 9-23-95
 Stephen F. Klupachon
 FAA 10-29-96

Tom Tolson
 FAA 12-22-96
[Signature]
 10-24-96
 12-12-96

V-9



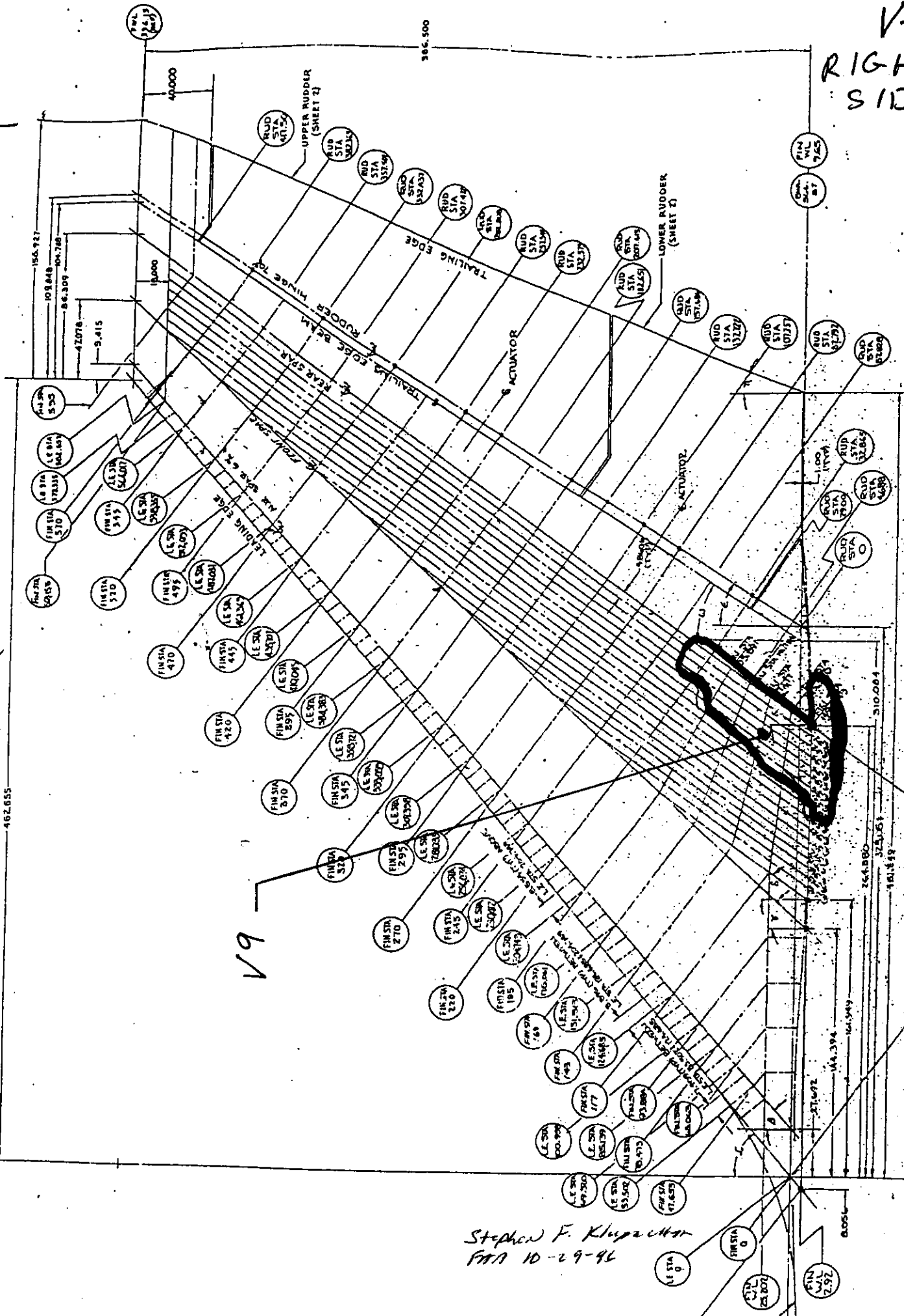
WHITTINGTON
9/4

BOLTS
FAILED
IN
TENSION

Stephen F. Klupach
FAA 10-29-96

V-9

V-9
RIGHT
SIDE



MODEL 747 ED
LH SIDE VIEW
UP

462.655

V9

Stephen F. Klupa
FAA 10-29-96