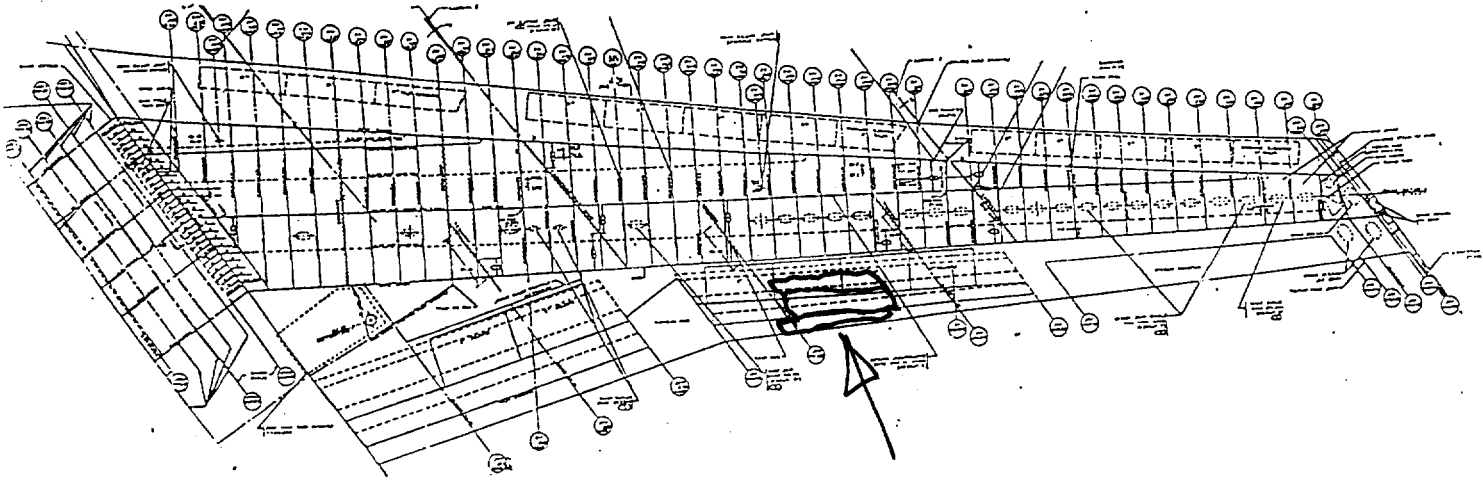


RIGHT WING - RW-26

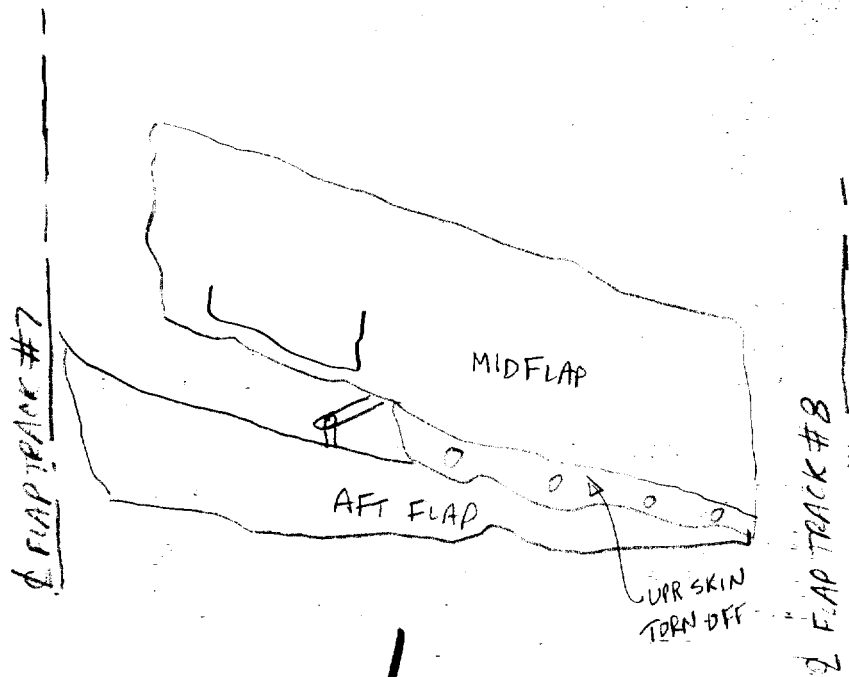


REFER FIRE AND EXPLOSION GROUP NOTES FOR FIRE DAMAGE

LOG # RW-26
 TARGET # C-234 & C-233

COORD: LAT 403950.14
 LONG 723727.24
 DEBRIS FIELD GREEN

RH WING OUTBOARD FLAP - SEGMENT OF MIDFLAP AND AFT FLAP ABOUT 14 FT X 6 FT BETWEEN FLAP TRACKS #7 AND #8, LEADING EDGE D-BEAM AND LEFT ONE-THIRD OF LOWER SKIN TORN OFF OF MIDFLAP. AFT FLAP BADLY MANGLED AND TORN, MOSTLY ALONG AFT EDGE. MODERATE AMOUNT OF SOOTING OVER AFT HALF OF WHOLE PART.



D. ORTH - BOEING
 10/20/96

D. GREEN
 11-13-96

B. VANDERHETIA
 TWA 11/18/96

Dennis Santiago IAM
 11-27-96

STEPHEN K. KUPFERBERG
 1-23-96
 NW PHOTO