

R/H WING LOWER PANEL -

CONTAINS JACK POINT
NO. 2

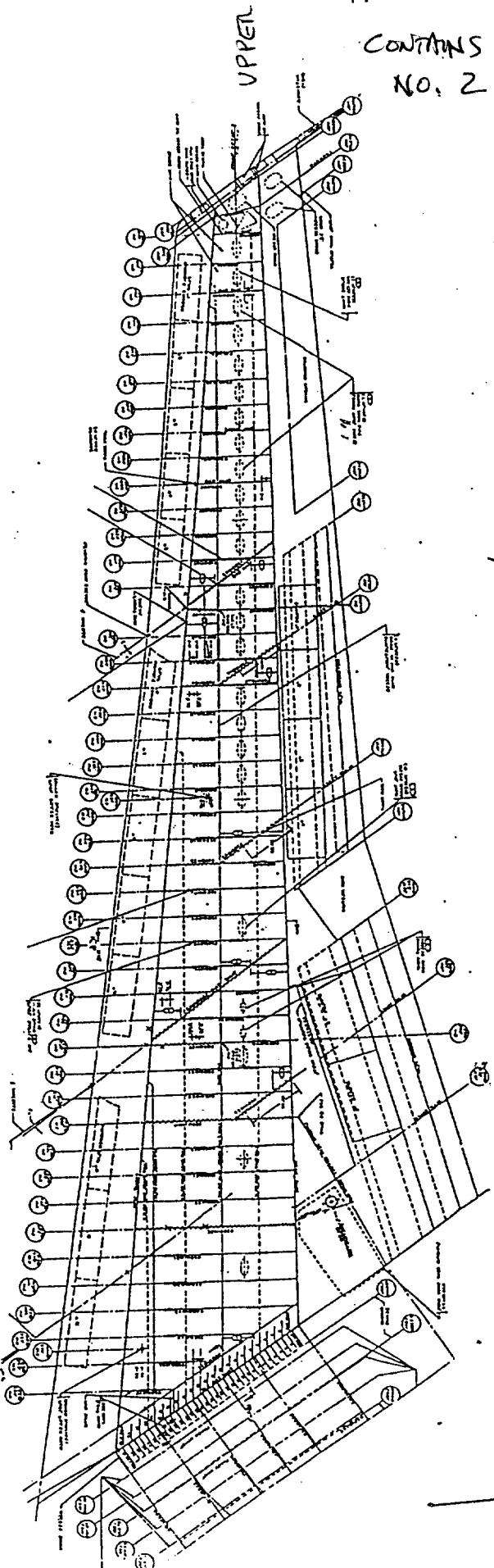
RW-2

(GREEN DEBRIS)
FIELD

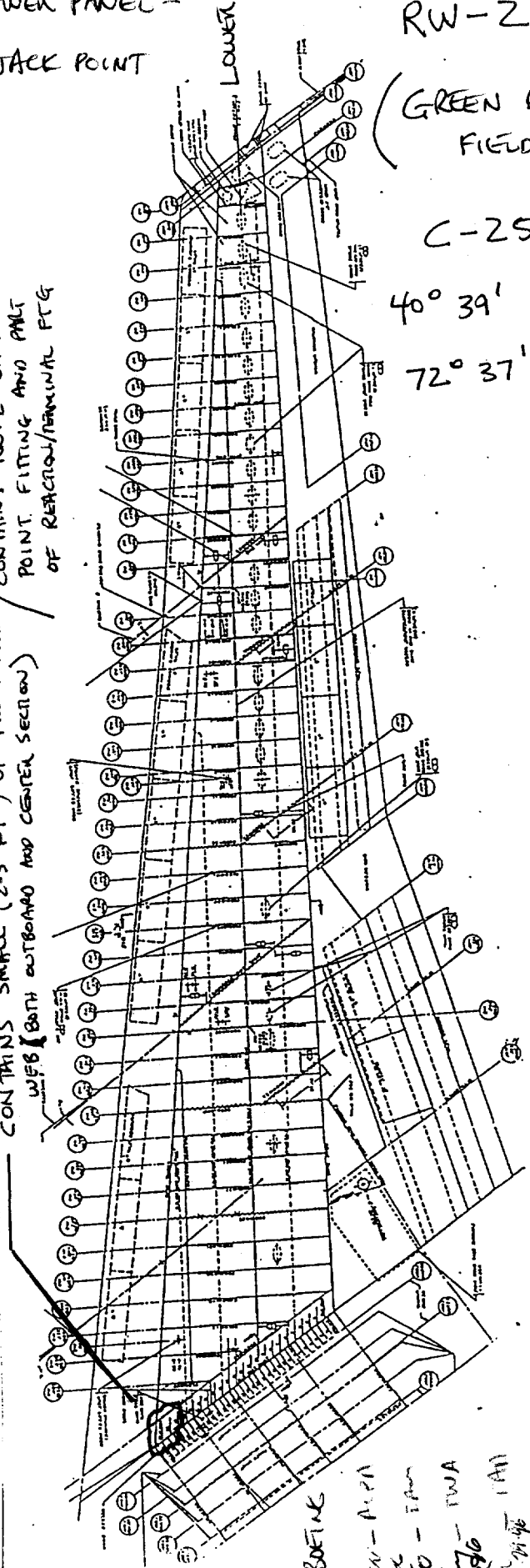
C-251

40° 39' 50

72° 37' 27



CONTAINS SMALL (2-3 FT²) OF FRONT SPAR /
WEB (BOTH OUTBOARD AND CENTER SECTION)
CONTAINS NO. 2 JACK
POINT FITTING AND PART
OF REACTION/REARWAL FTG



SOOTED ON OUTSIDE, CLEAN ON INSIDE

REFER FIRE AND EXPLOSION GROUP NOTES FOR FIRE DAMAGE

RWA - BOEING
 GREEN - N/A
 10/10/10 - IM
 11/12/10 - TWA
 12/13/10 - TWA
 1/14/11 - IM
 2/15/11 - IM