

LOG # RF 45 F

TARGET # C644

COORD: LAT _____
LONG _____

Station 1900-1920

DEBRIS FIELD Green #1

Section of Aft CGO Door Lower Aft Measures

22" x 33 1/2" ENCOMPASSING #4 Lower Latch Assy.

Piece is Bent, Twisted, Torn, Ripped & Punctured
NO OUTER SKIN ATTACHED AT ALL

09-17-96

Steve Klipach

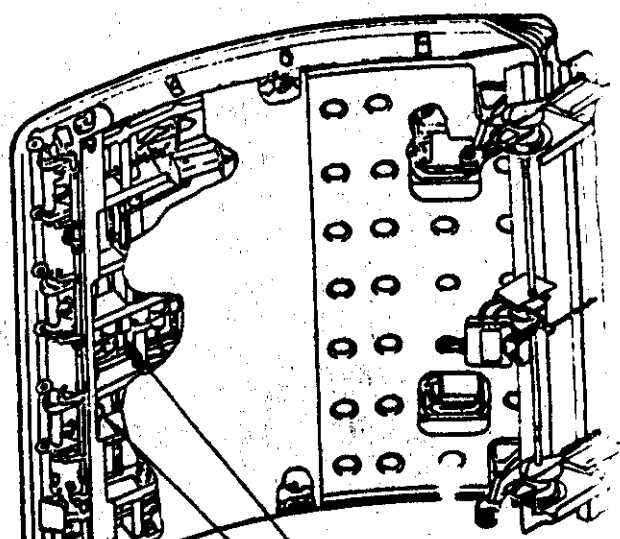
FAA

Tom Todman
FAA 10-10-96
YMC
10-11-96

2

9/15

S. Klapach
 FAA
 9-17-96

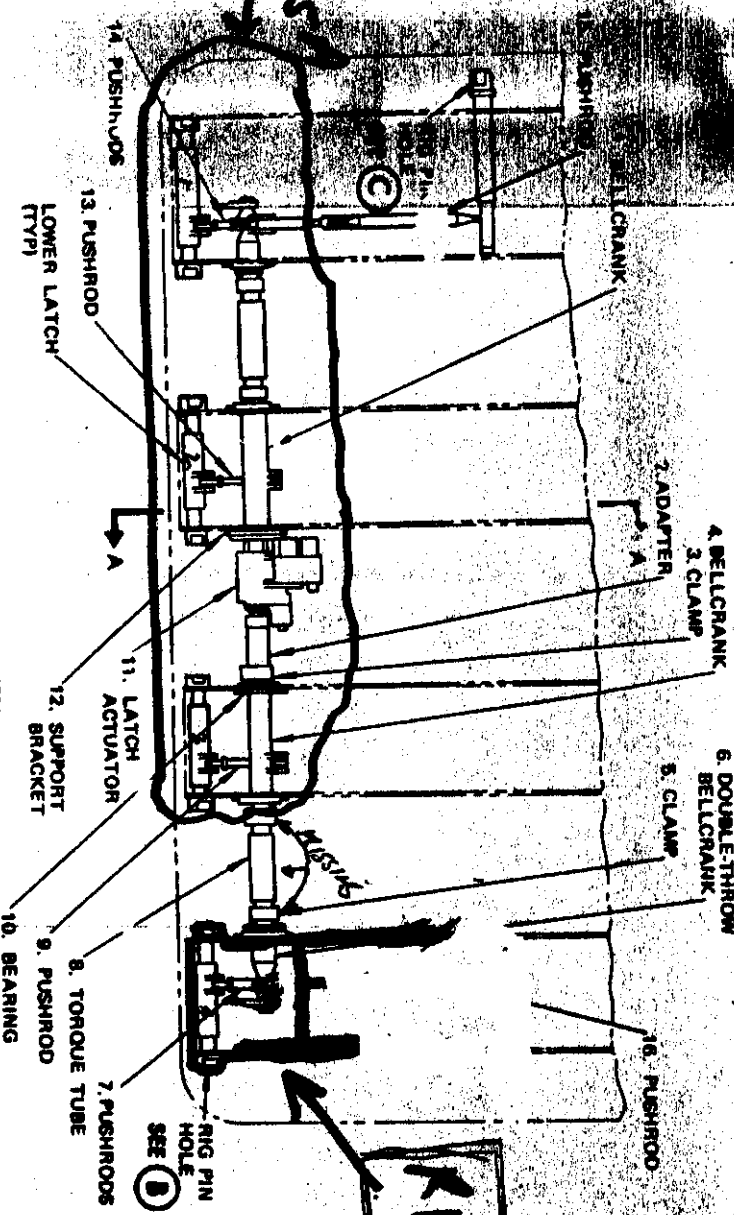


LATCH ACTUATOR
 ELECTRICAL CABLE
 LATCH MECHANISM
 SEE (A)

FWD
 UP
 RIGHT HAND

10/15

RP 45 F



FWD
 ↑

(A)

Latch Actuator Installation

RP 45 F