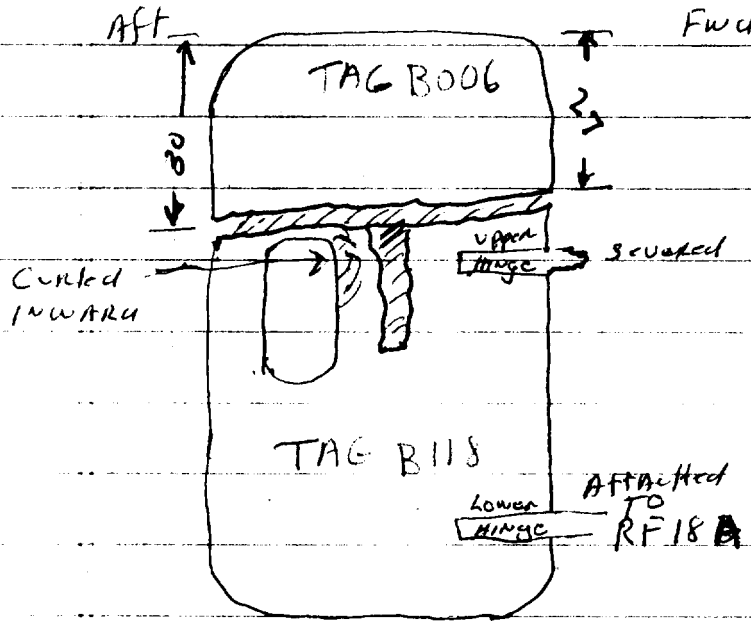


LOG # RF18  
 TARGET # \_\_\_\_\_  
 COORD. LAT \_\_\_\_\_  
 LONG \_\_\_\_\_  
 DEBRIS FIELD 2

RF18A TAG B118 R18 F TAG B2013  
 18B TAG B006/ R18 G TAG B218  
 TAG B141  
 18D TAG B2021  
 18E TAG B202

RF18 A FUS-section from station 420. Vertically separated from  
 S-20 to S-27 & Lower Hinge Attached to R1 M.E.D. RF18 B  
 Station 440

RF18 B R1 M.E.D. Door severed from Fwd to Aft



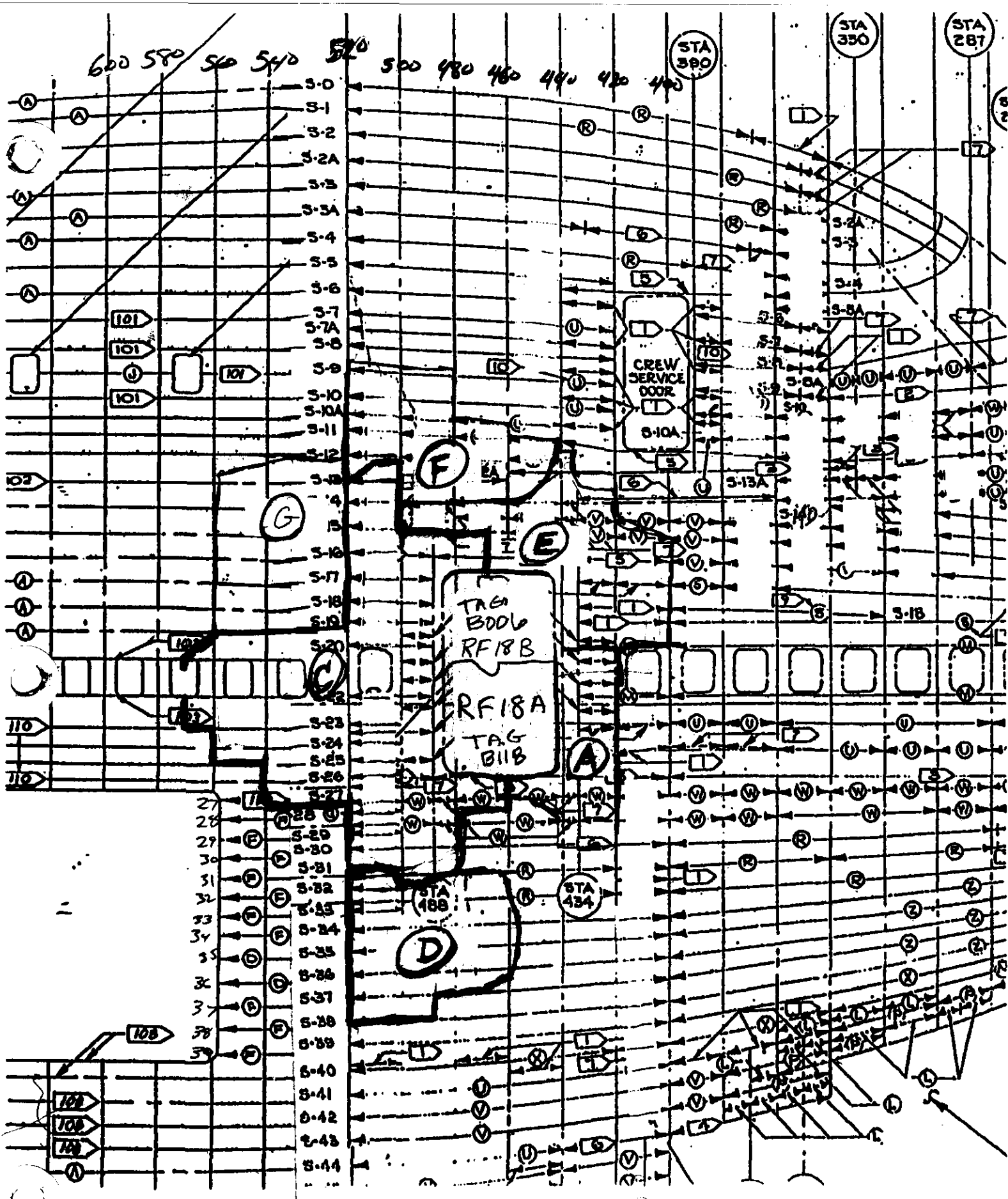
Door Mangled & mutilated All interior trim gone  
 Door Handle missing, window portion curled inward

Jim Powers  
 Boeing  
 11-11-96  
 signing for  
 all notes  
 A-G

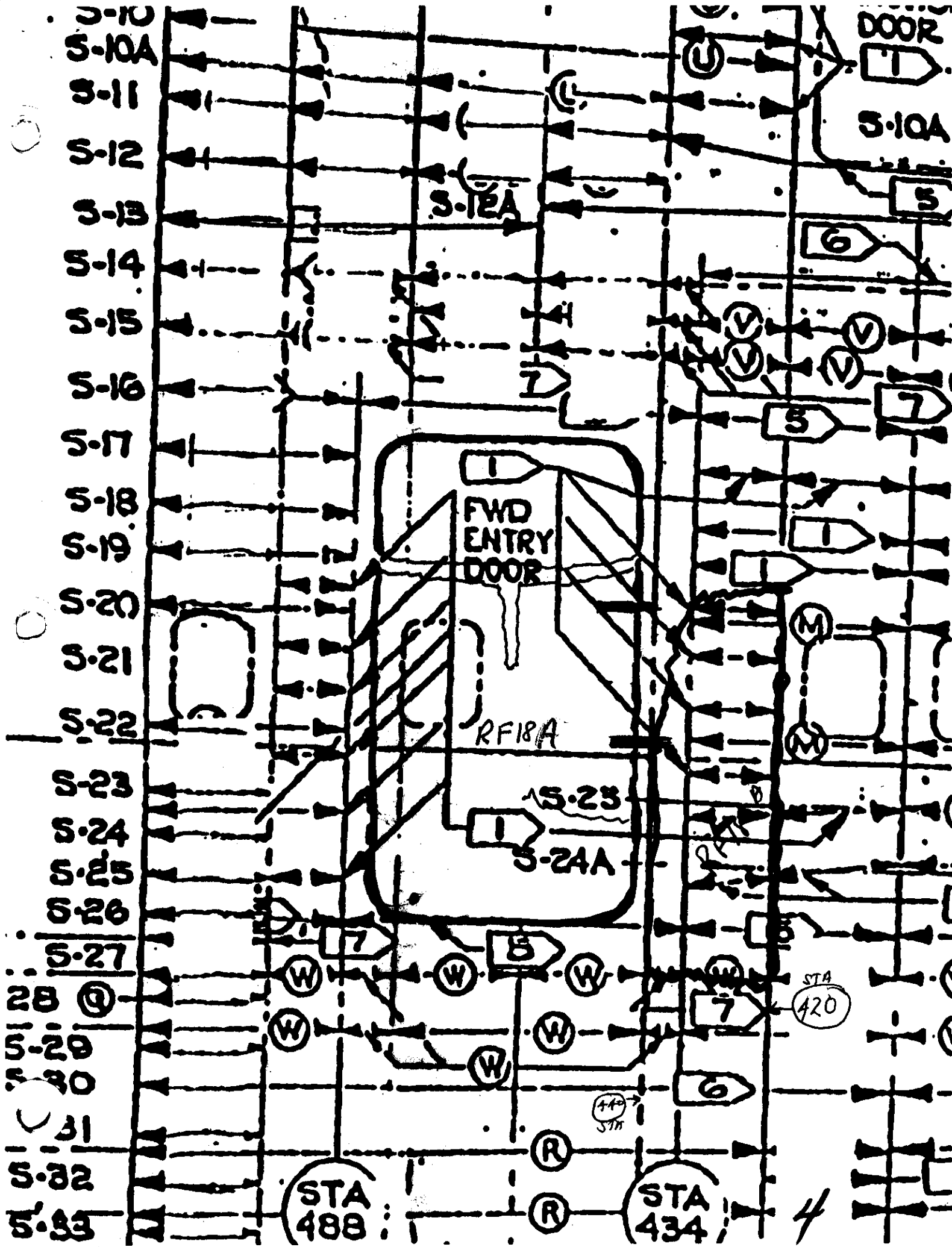
Shankar TWA 10/11/96  
 S K FAN

Tom Todino  
 FAA 10-10-96

Dennis Santiago 10/11/96



RF18 LAYOUT



# RF18 C Field 2

Fuse large station 488 - 520 Sta 520 Flat against inside skin

Strangers S-13-R - S-19R

Station 488 Extends pass S-19-R & goes DOWN ward  
S-26 R and is connected to the lower door sill.

S-19 R Mangled & bent pulled away from skin

S-18 R Fastened to skin & crushed flat.

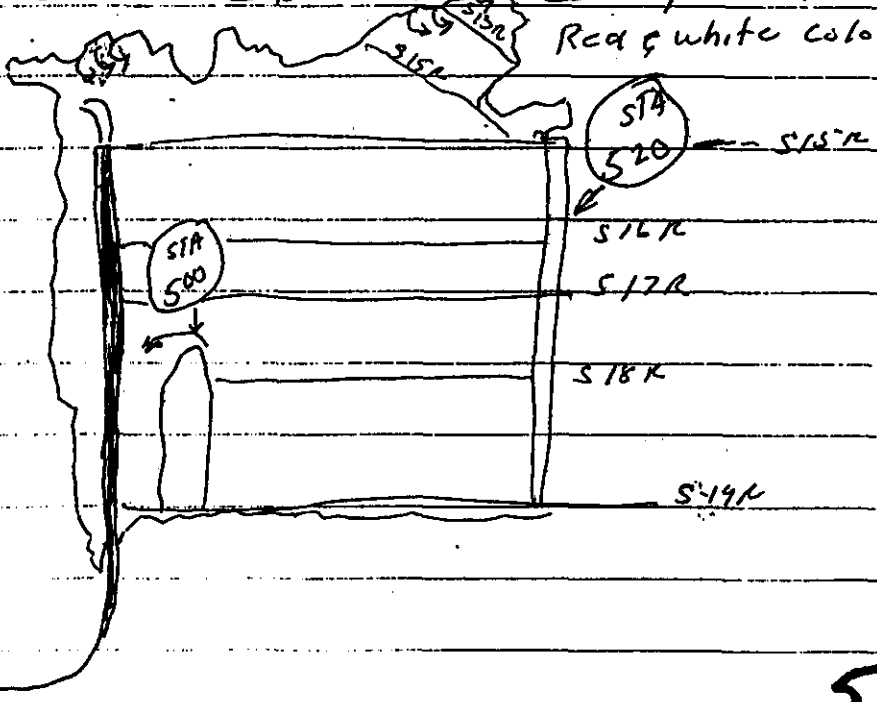
S-17 R 10" Long a piece 11" Long MISSING & 1' PASS STA 520

S-16 R ALL MISSING REMAINING RIVETS IN SKIN (3).

S-15 R MISSING

S-14 R & 13 R MISSING, SKIN ROLLED FROM OUTSIDE

TO INSIDE MEASURES 1' @ BOTTOM & 20" @ TOP Red & White  
in color.



# RF 18C

## Field 2

	Fuselage Station 488 to 560 +
	Stringers S-13-R - S-31-R
S-19-R	STA 520-540 (540-560) Top Ripped Look Like SAW TOOTH TIPS
S-20-R	starts @ 3" Above window #15 continues to window 18 - 2" of window #18
S-22-R	8" Fwd of 22 severed @ sta 560 & pulled away from skin continues TO HALF of #18 window
S-23-R	Flattened to sta 520 separated & continues to sta 540 - 14" aft
S-24-R	Portion missing sta 500-520 - 520-540 Bent outward & separated & continues to sta 560
S-25-R	Flattened sta 500-520 - 520-540 Bent outward & separated & continues to sta 560
S-26-R	Most of stringer missing sta 500-560
S-27-R	STA 500-520 Flattened against skin
S-27R	sta 500-540 cracked & severed
S-28-R	sta 500-520 Flattened against skin
S-29-R	sta 488-520 CRUSHED & MUTILATED against skin
S-30-R	25" missing & rivets
S-31-R	18" missing & rivets

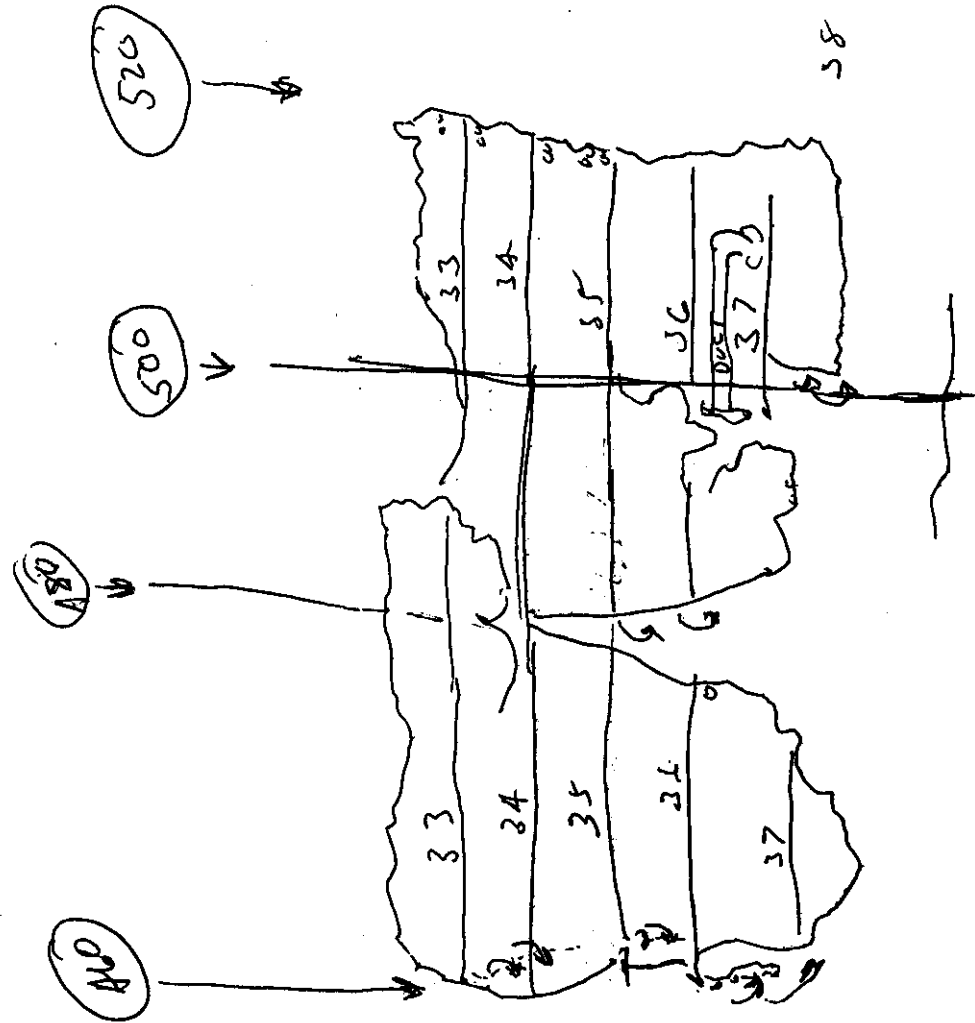
Tom Todaro  
FAA 10-10-96

RF18 D  
Field #2

	Station 460-520
	Stringers S-32-R - S-37-R
	S-32-R MISSING & RIPPED AWAY FROM SKIN
	S-33-R Piece of S-33-R MISSING & RIPPED AWAY FROM SKIN STA 480-500
	S-34-R Flattened STA 460-520 Piece MISSING STA 480 Fwd 7" SKIN Separated & RIVETS MISSING
	S-35-R STA 420-480 SKIN Separated VERTICALLY FROM S-34-R TO S-37-R S-35-R CONTINUES TO STA 520 WITH SKIN Separated @ STA 500
	S-36-R 15" Fwd STA 480 Separated vertically & continues on with RIPS & separation IN SKIN STA 500 Part of duct ASSY S-36-R CONTINUES TO STA 520
	S-37-R 10 1/2" Fwd of sta 480 Separated vertically continues 5" aft of separation with cuts - RIPS MISSING. S-37-R intact from STA 500-520
	S-38-R MISSING RIVETS & IS Bent & RIPPED

Tom Todaro  
10-10-96  
7

RF-18 D  
FIELD #2



RF-18-E  
Field # 2

Station 400-480

Stringers 11-19

S-19-R-S13-R Fwd Bent & twisted upward & inward aft -  
to STA 434 in a ACCORDION FASHION

BETWEEN STA 400-480 2 WIRE BUNDLES & TUBING & HOSE &  
FITTING

STA 460 EXTENDS UPWARD TO S-11-R & PASS

This piece is MANGLED - curled bent inward & outward

S-12-R MISS @ STA 460-480 & 481

Tom Todino  
FAA 10-10-96



# RF-18 & F Field #2

Station Fwd of 440 - 520

Stringers S-9-R - S-14-R

S-9-R Sta 500 Extends aft 13" S-9-R missing & rivets to STA 520

S-10-R STA 480-500 Pulled away from skin STA 520 S-10-R attached to skin 14" rest missing to STA 520 rivets missing skin bent & curled

Outward Fwd. Between S-9-R & S-10-R STA 500-520 skin has a puncture 2" long 1/4" wide. outward

S-10-A STA 480-520 - S-10-A 8" aft severed & continues to STA 500. 13" aft skin bent & curled outward fwd

S-11-R 13" fwd STA 460 pulled away from skin inward to STA 480 6" aft severed, pulled away from skin STA 500 & aft pulled away from skin to STA 520 aft skin bent & curled outward.

S-12-R fwd STA 460-490 STA 460-480 S-12-R pulled away from skin S-12-R inward STA 490-500, S-12-R in tact STA 500 aft S-12-R missing, end curled down ward & outward

S-13-R missing from skin STA 460 - 500

S-14-R missing from skin STA 460 & 12" aft of STA 480 all rivets missing

Tom Todman  
FAR 10-10-96

RF18 G  
FIELD #2

STA 520 - 560

STRINGS S-12-RS-19R

Sta - 520 - 560 MISSING FROM SKIN

S-12-R MISSING FROM SKIN

S-13-R MISSING FROM SKIN STA 520-560

S-14-R MISSING FROM SKIN STA 520-560

S-15-R - MISSING STA 520 to 540 - 540-560 ATTACHED TO SKIN

S-16-R MISSING FROM SKIN

S-17-R ATTACHED TO SKIN STA 520 - 560

S-18-R ATTACHED TO SKIN ABT STA 520-560

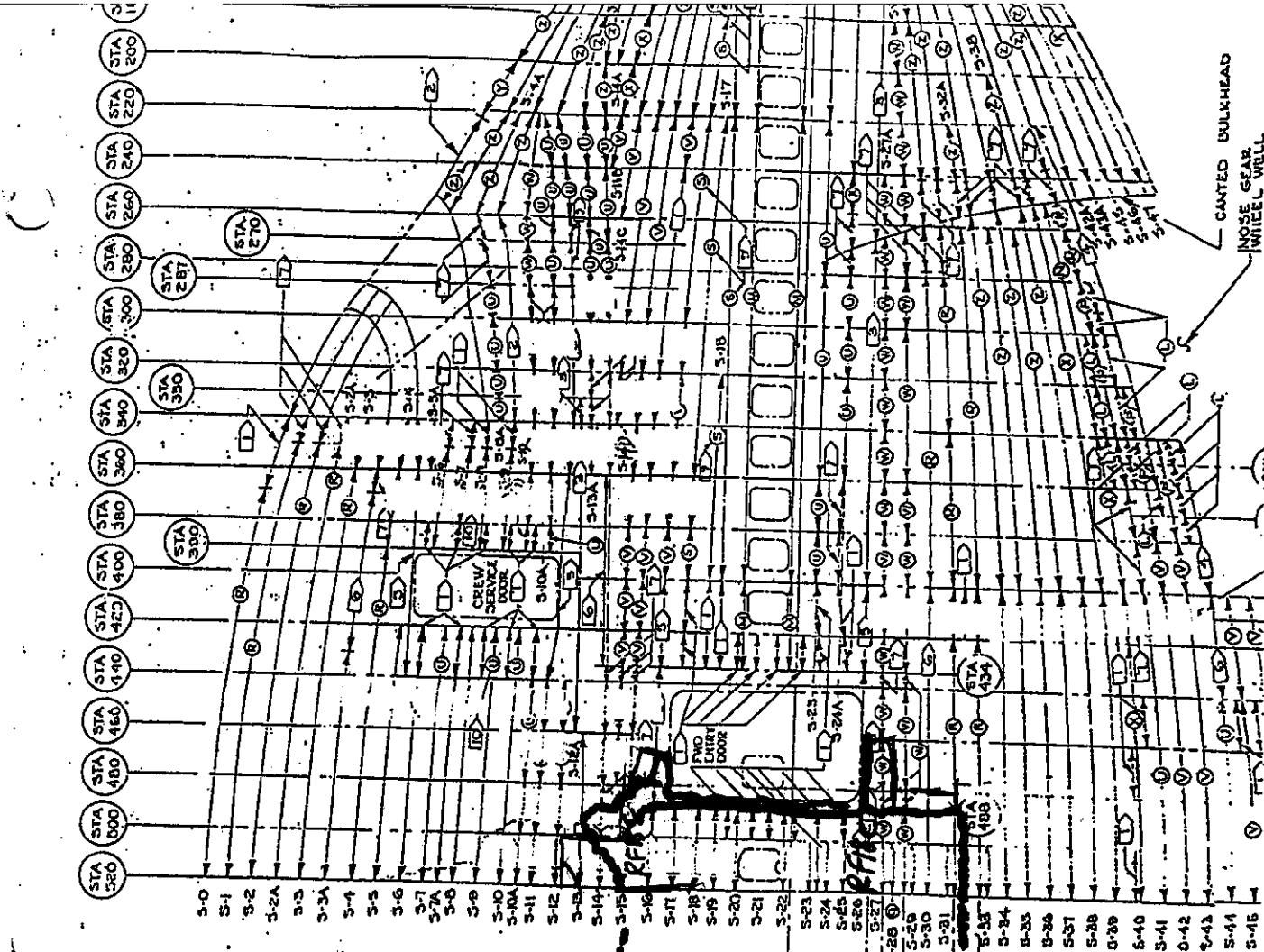
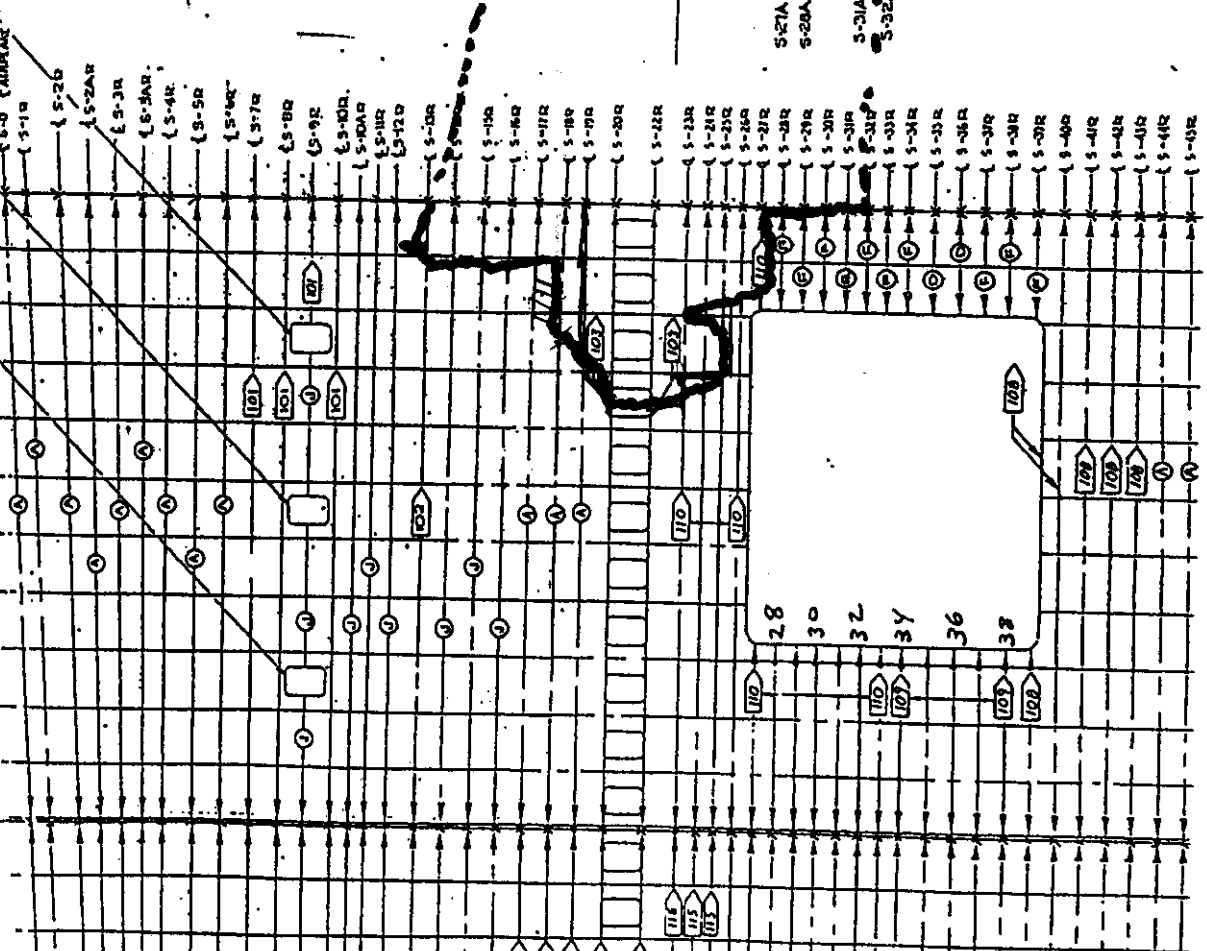
S-19-R MISSING FROM SKIN

Piece rolled over & CRUSHED

Time Taken  
FRA 10-10-96

//

STA 700  
STA 600  
STA 520  
540  
530  
520



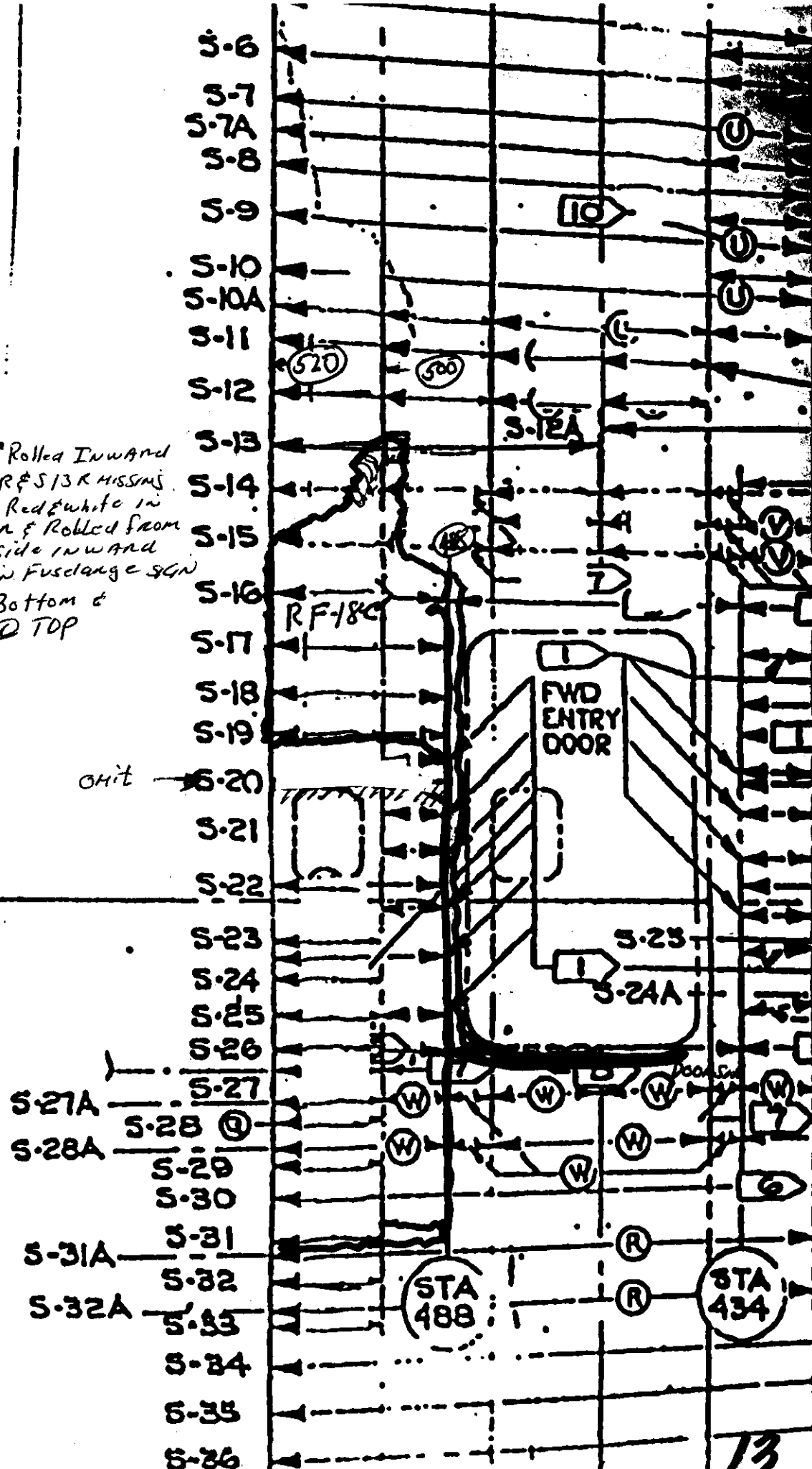
CANTED BULKHEAD  
NOSE GEAR  
WHITE L WRELL

Tom Todaro  
10-10-96

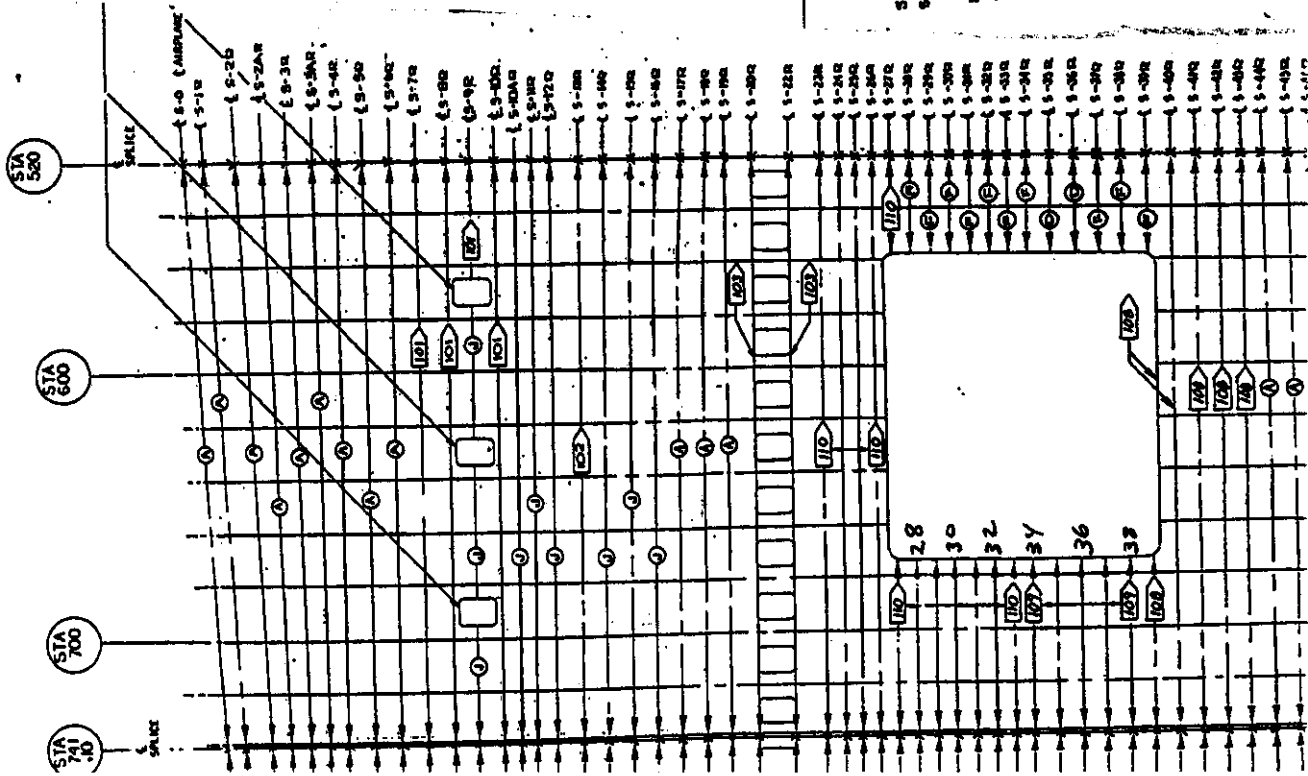
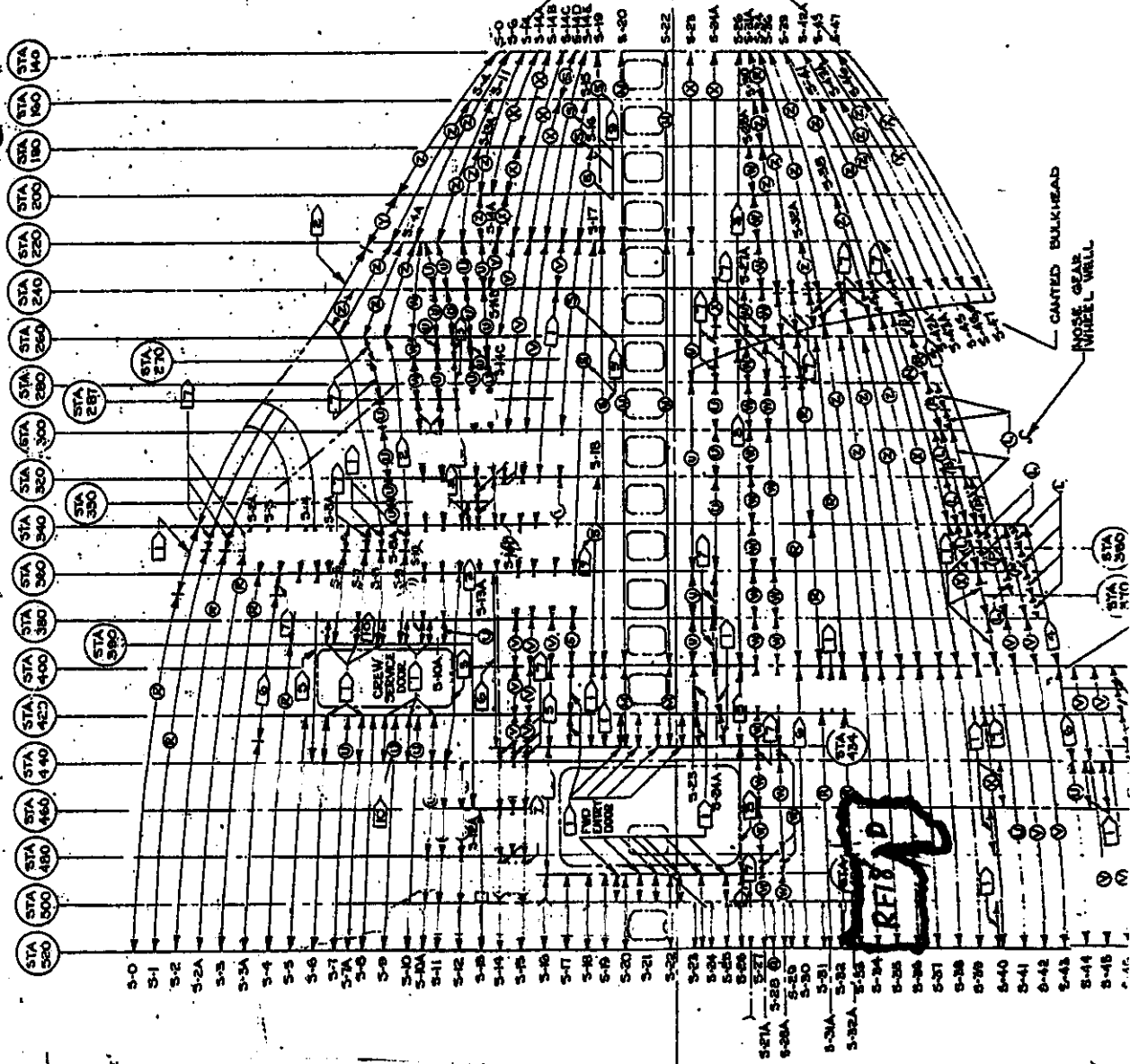
- \* S-6R
- \* S-7R
- \* S-8R
- \* S-9R
- \* S-10R
- \* S-10AR
- \* S-11R
- \* S-12R
- \* S-13R
- \* S-14R
- \* S-15R
- \* S-16R
- \* S-17R
- \* S-18R
- \* S-19R
- \* S-20R
- \* S-22R
- \* S-23R
- \* S-24R
- \* S-25R
- \* S-26R
- \* S-27R
- \* S-28R
- \* S-29R
- \* S-30R
- \* S-31R
- \* S-32R
- \* S-33R
- \* S-34R
- \* S-35R
- \* S-36R

\* Rolled Inward  
 S14R & S13R MISSING  
 SKIN Red & white in  
 Color & Rolled from  
 Outside inward  
 Again. Fuselage SGN  
 1" @ Bottom &  
 20" @ TOP

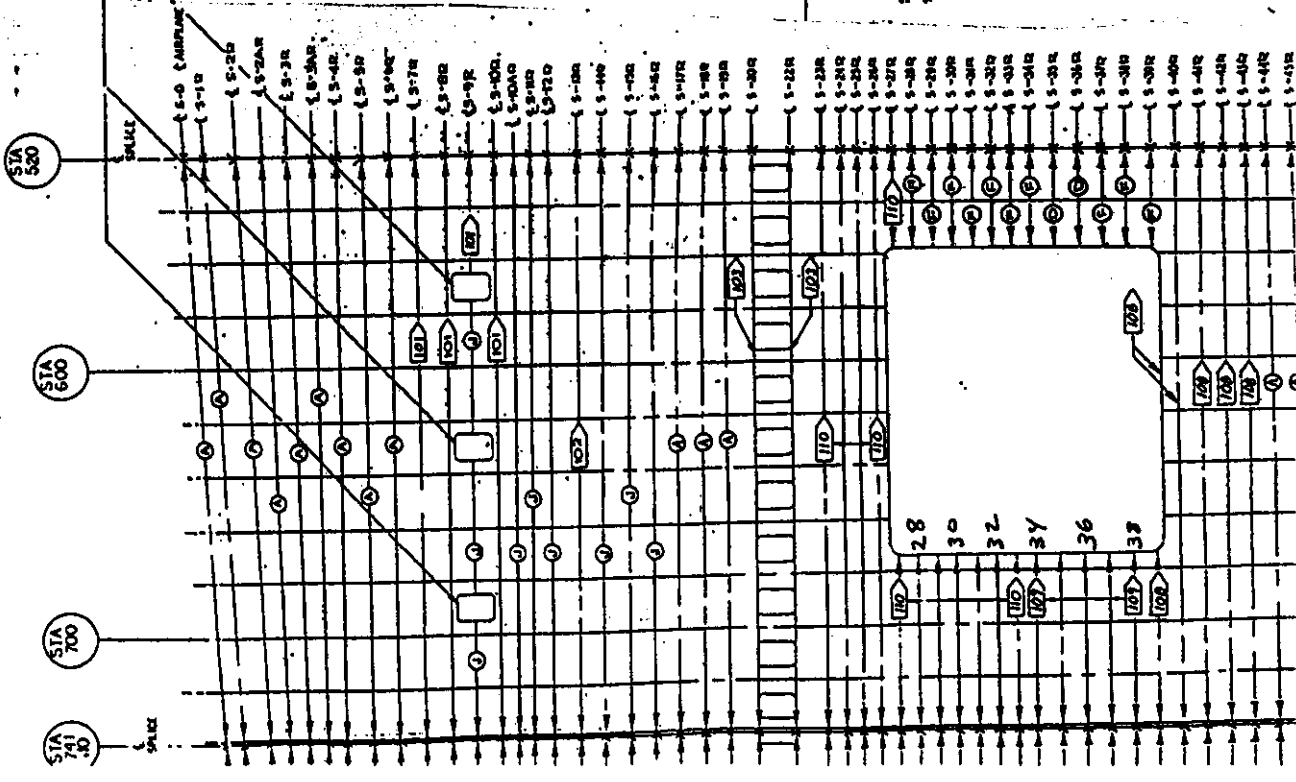
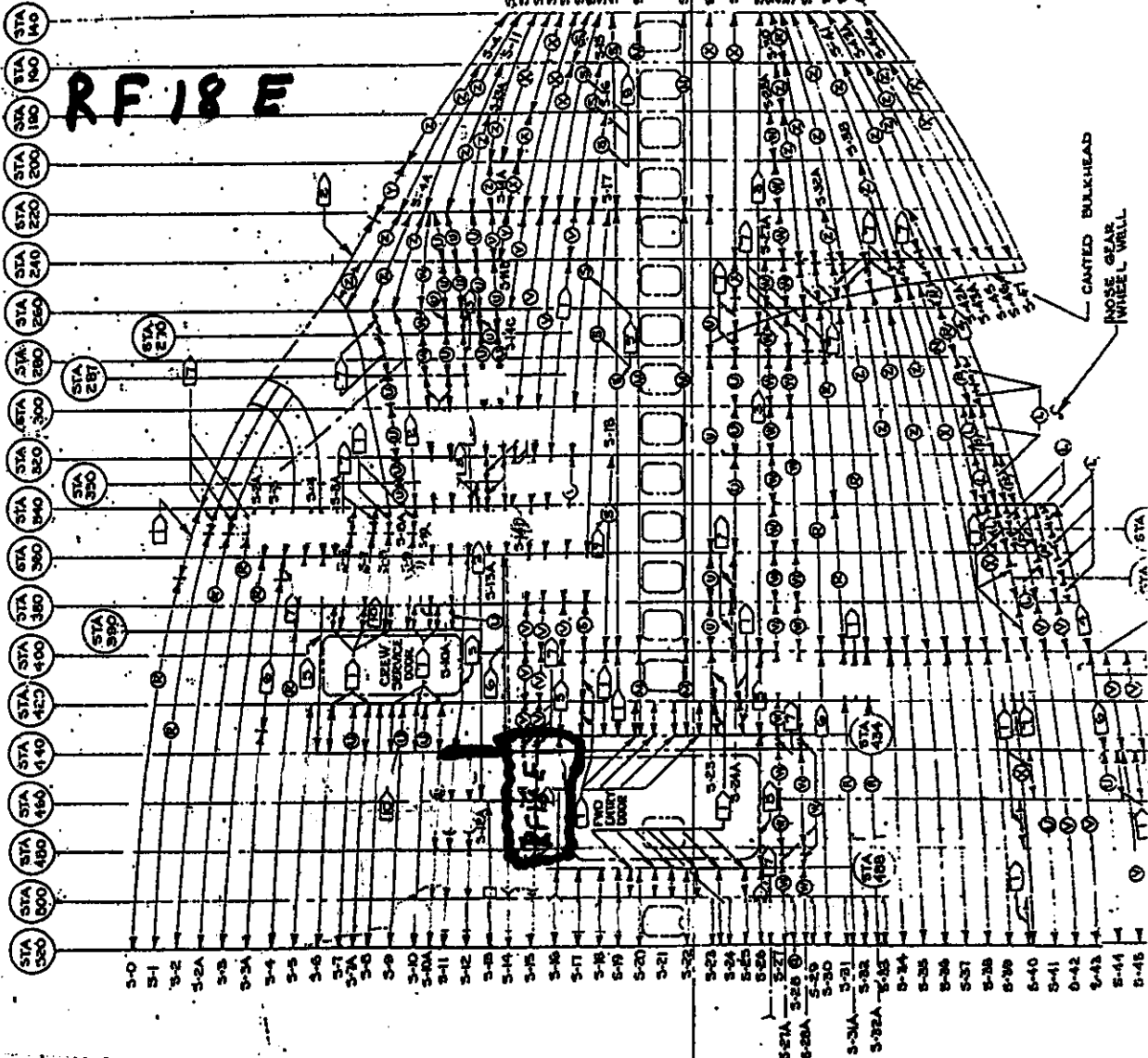
OHIT

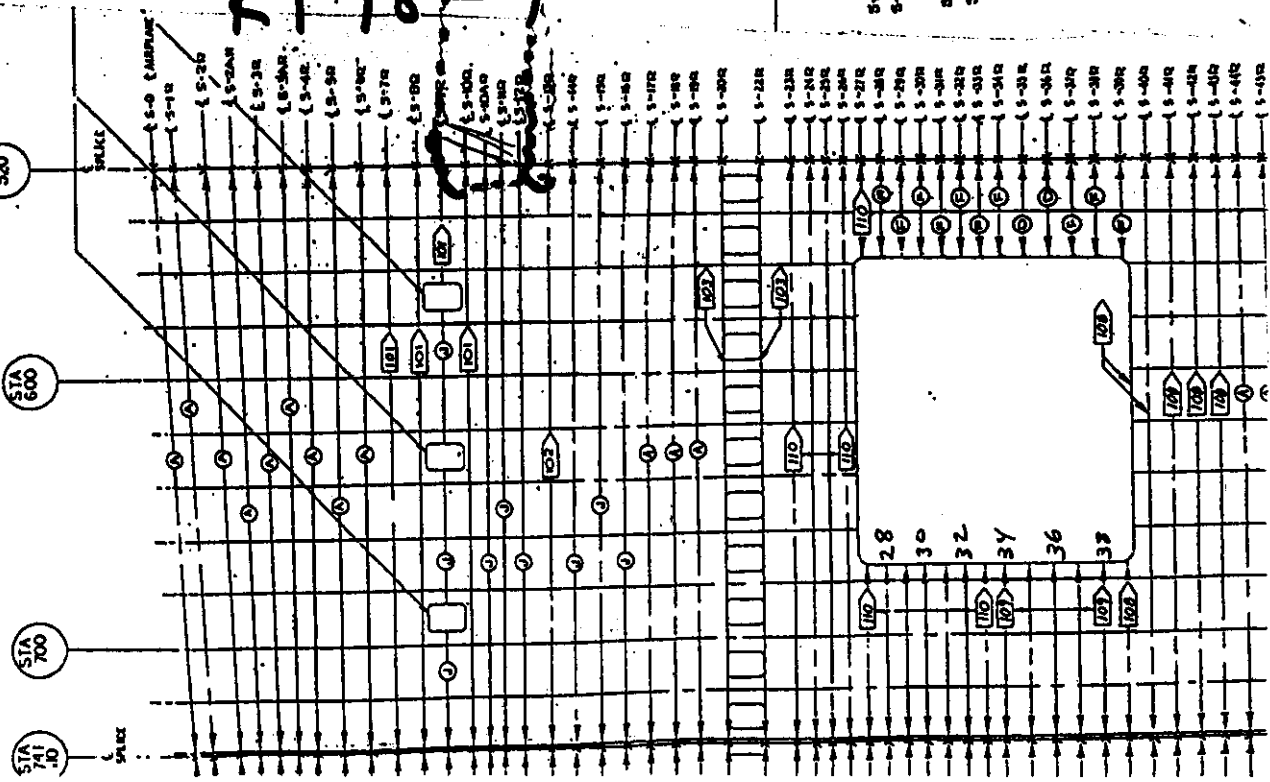


RF18 D  
F10L12

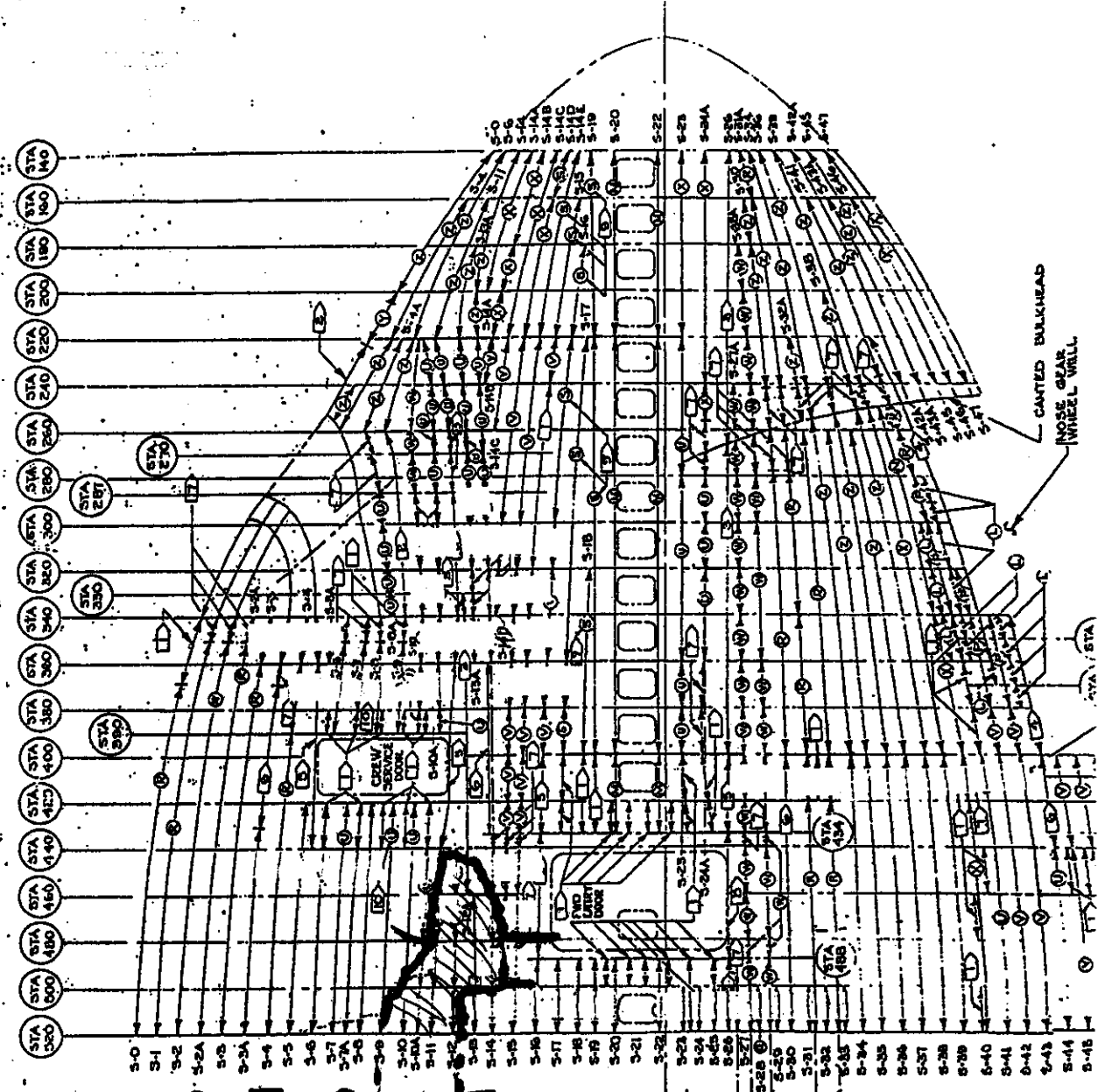


RF 18 E

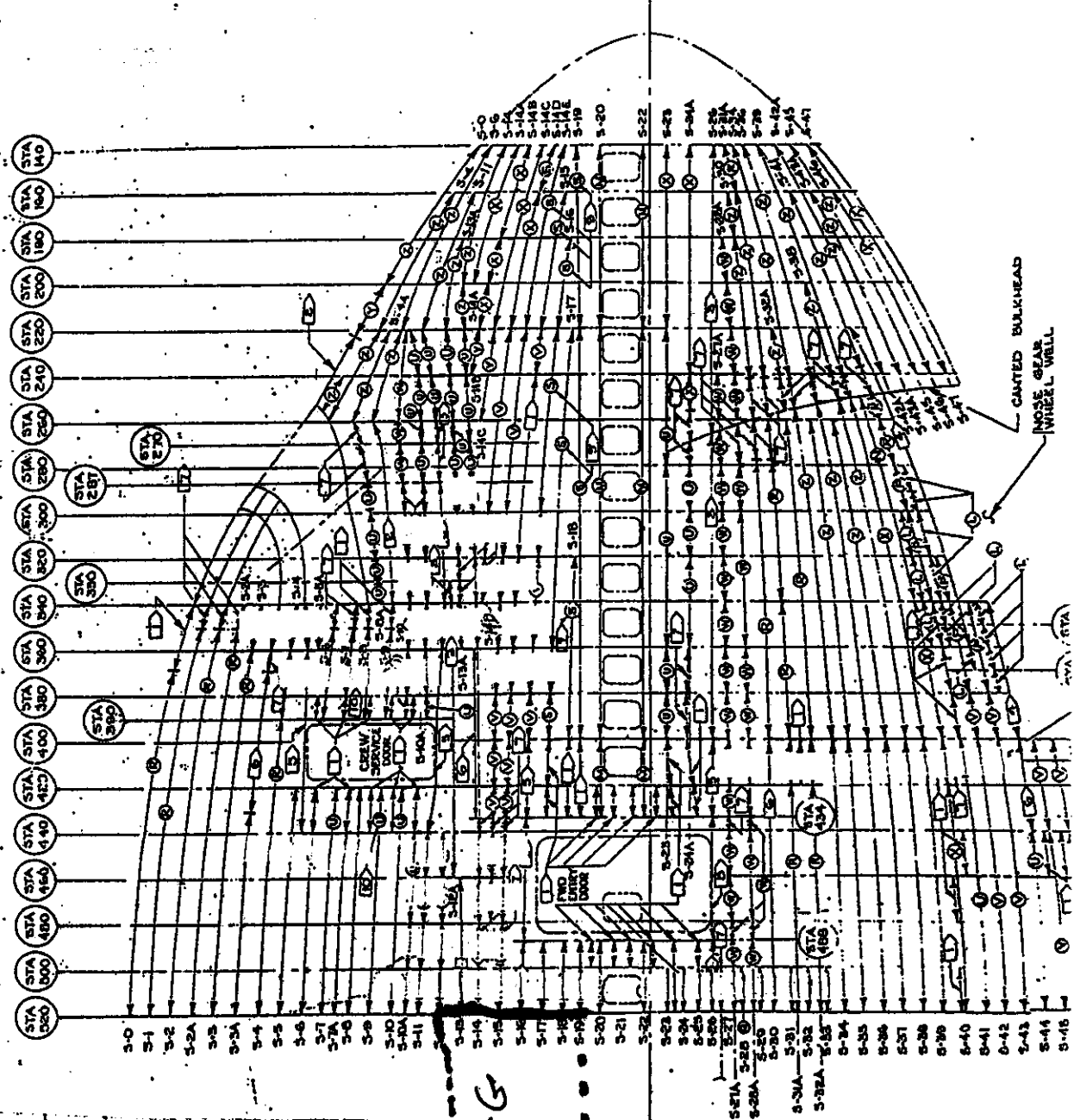




RF 18-11



RF18-G



17

