

LOG # RF162

TARGET # UNKNOWN

COORD: LAT _____
LONG _____

PRESSURE DECK WEB DEBRIS FIELD UNKNOWN

STA 1324 - 1346

RBL 75.92 - 98.58

NO FBI # FOUND

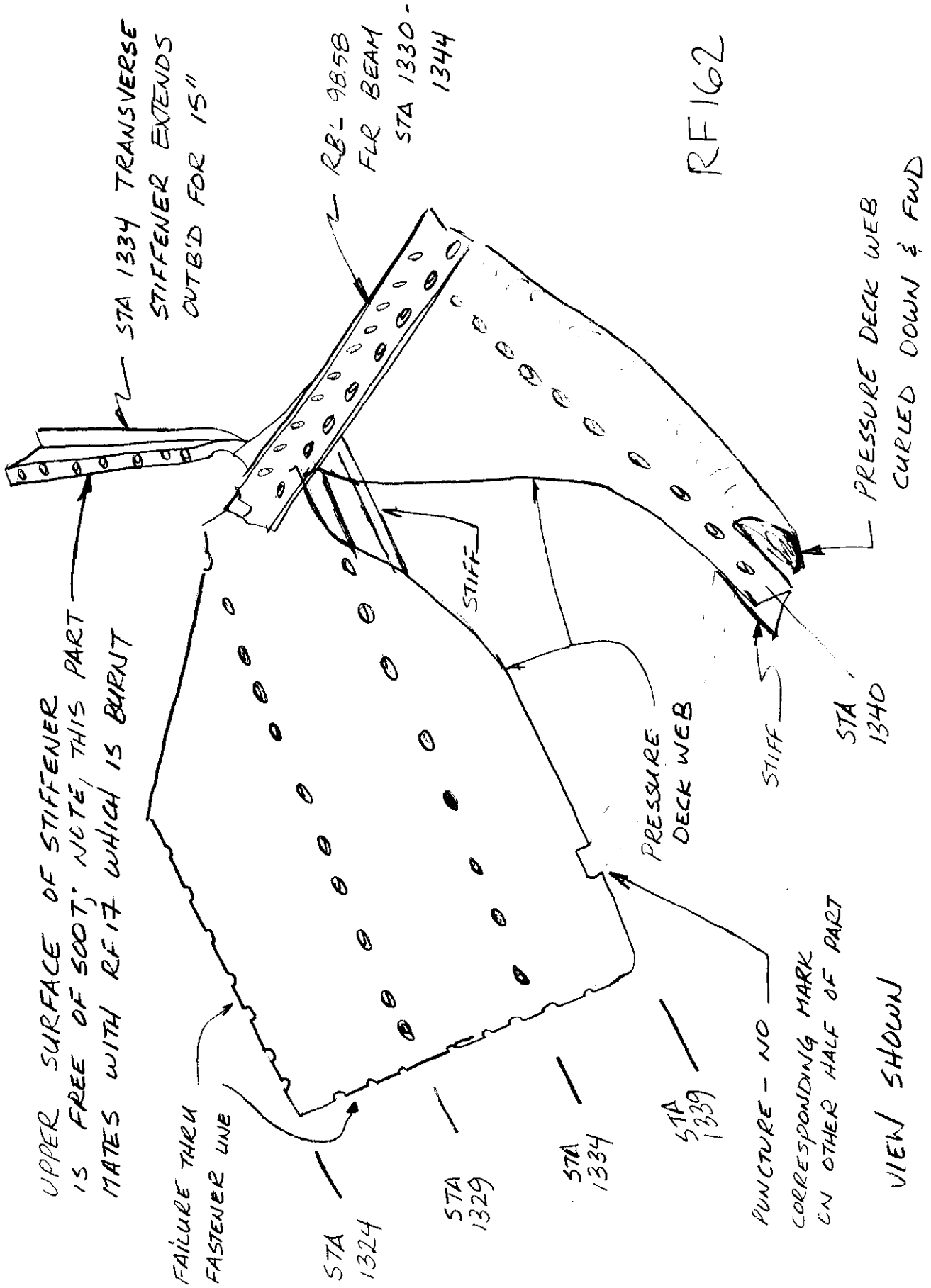
- UPPER SURFACE OF PART IS CLEAN
- ALL FRACTURE SURFACES AND DISBONDED SURFACES ARE FREE OF SOOT
- LOWER SURFACE OF PART IS DIRTY WITH THE AFT SURFACES OF THE STA 1329 & 1334 STIFFENERS BLACKENED

Handwritten signature
TWA 3/19/97

Dennis Santiago IAM
3-7-96
Stephen F. Kilgus 115-
FAA 05-14-97

R. Hanover 3/6/97

Leigh J. Johnson - ALPA
3-17-96



UPPER SURFACE OF STIFFENER IS FREE OF SOOT; NOTE, THIS PART MATES WITH RF17 WHICH IS BURNED

STA 1334 TRANSVERSE STIFFENER EXTENDS OUTBD FOR 15"

RBL 98.58 FLR BEAM STA 1330-1344

RF162

PRESSURE DECK WEB CURLED DOWN & FWD

FAILURE THRU FASTENER LINE

STA 1324

STA 1329

STA 1334

STA 1339

PUNCTURE - NO CORRESPONDING MARK ON OTHER HALF OF PART

STIFF

PRESSURE DECK WEB

STA 1340

VIEW SHOWN

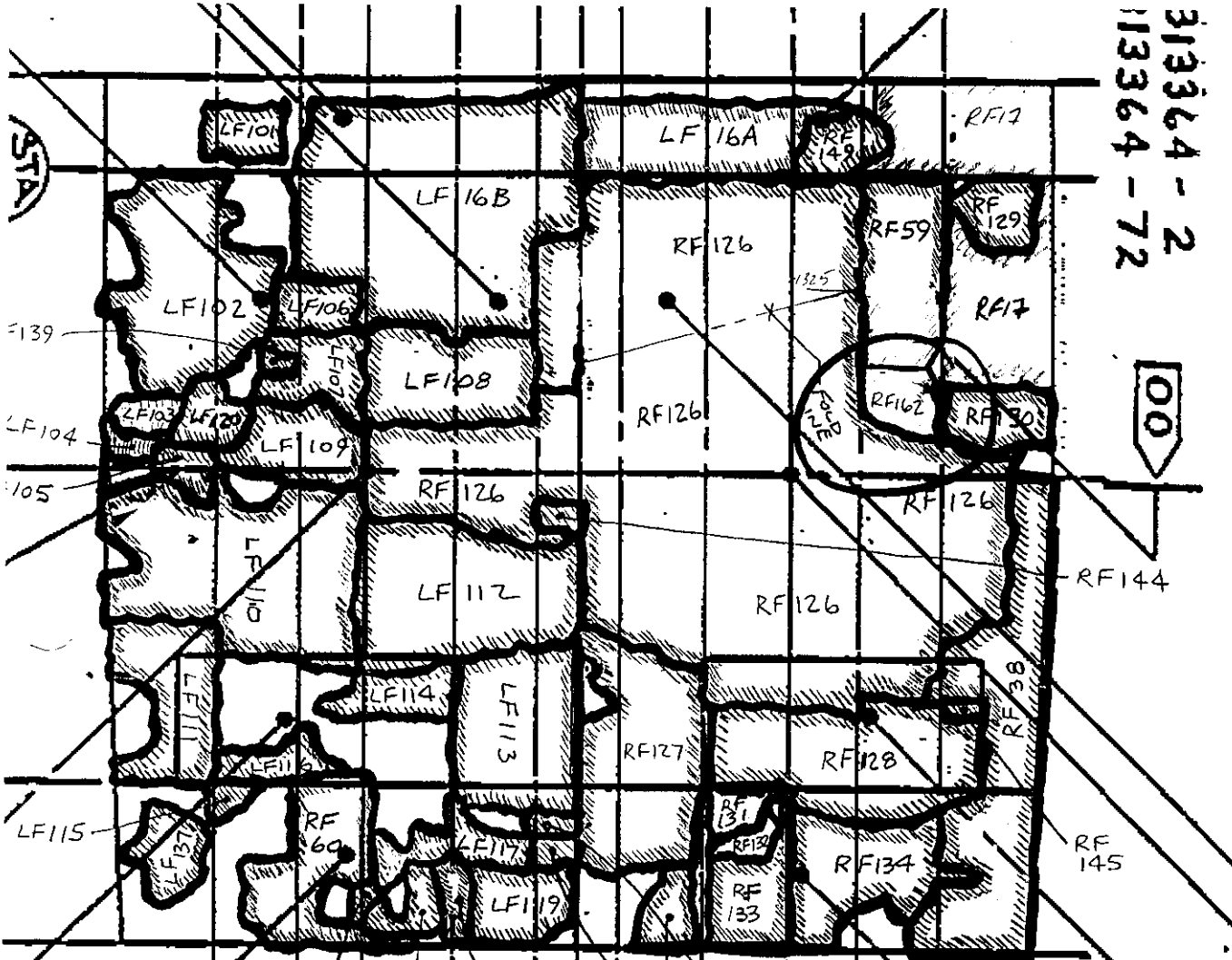
LK9 DN ON

UPPER SURFACE

RF16Z

313364-2
113364-72

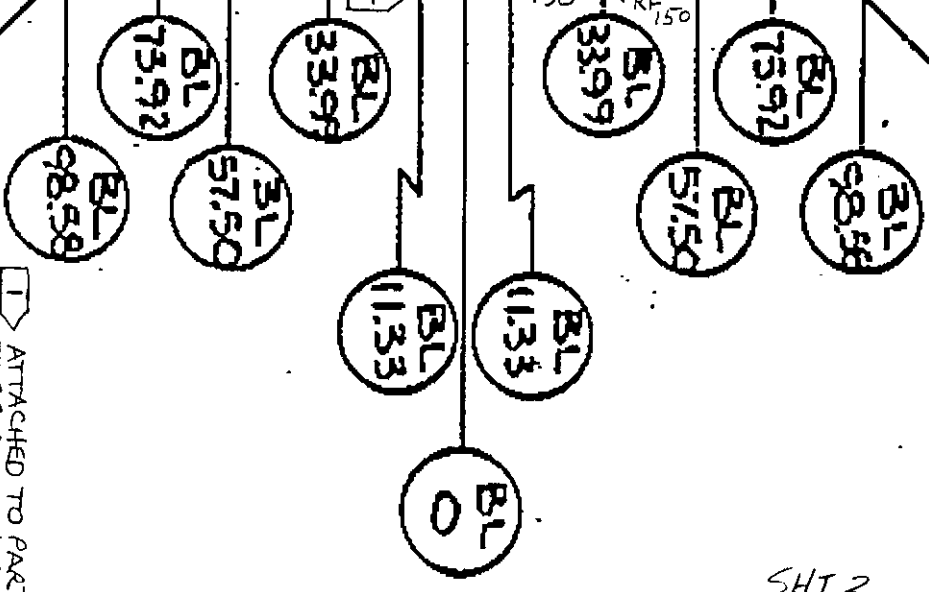
00



65B13365-2 00

65B13366-2 00
65B13366-62 00

R



1

ATTACHED TO PART
TAGGED WITH C-
(STX 1480 BLKHD)

65013366-
65013366

SHT 3