

LOG # RF15Z

TARGET # C2467

COORD: LAT _____
LONG _____

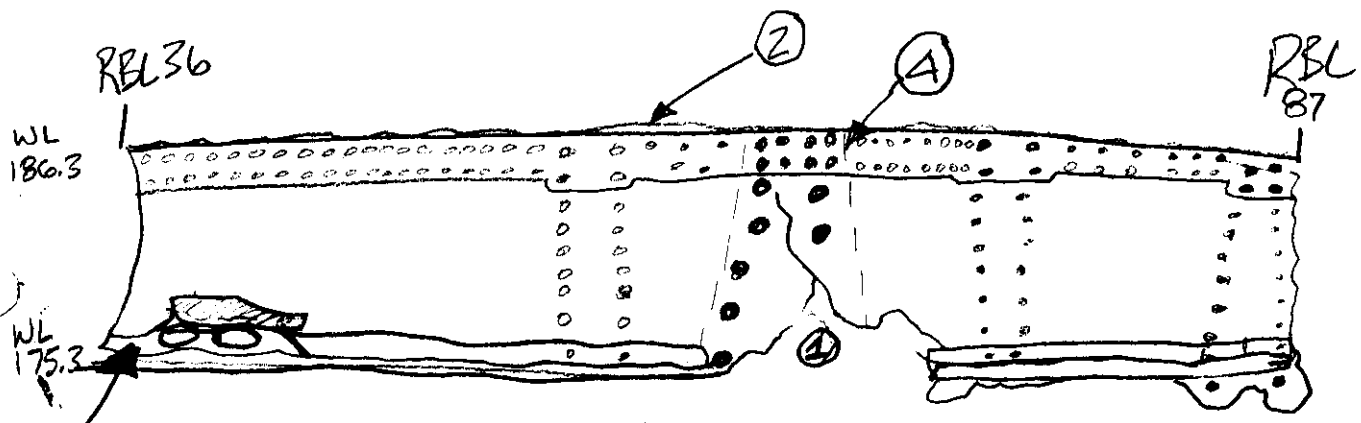
1480 BULKHEAD UPPER PORTION

DEBRIS FIELD _____

RBL 36 TO RBL 87

WL 175.6 TO 186.3

* WEB IS MOSTLY FLAT WITH A GENTLE FORE-REAR DEFORMATION



HORIZONTAL STIFFENER FRACTURED ALONG MOST OF THE LENGTH

- ① LOWER STIFFENER IS MISSING WITH A PORTION OF THE WEB WHERE TOP OF O. B. MAIN BODY LANDING GEAR TRUNNION FITTING IS ATTACHED TO WEB.
- ② UPPER CHORD IS FAILED AT FLANGE RADIUS
- ③ ~~REINFORCED ANGLE AND MOST OF WEB OF LOWER STIFFENER STILL ATTACHED~~ SOME AT Boeing TWA 3/24/97
- ④ SMALL PORTION OF O. B. MLG TRUNNION AFT UPPER FLANGE IS ATTACHED TO RF15Z WEB.

* MINOR SCOTING AND/OR SOILING IS PRESENT ON FORWARD SIDE

Dennis Santiago JAM
11-7-97

Stephen F. Kuper Jr
FM 03-14-97

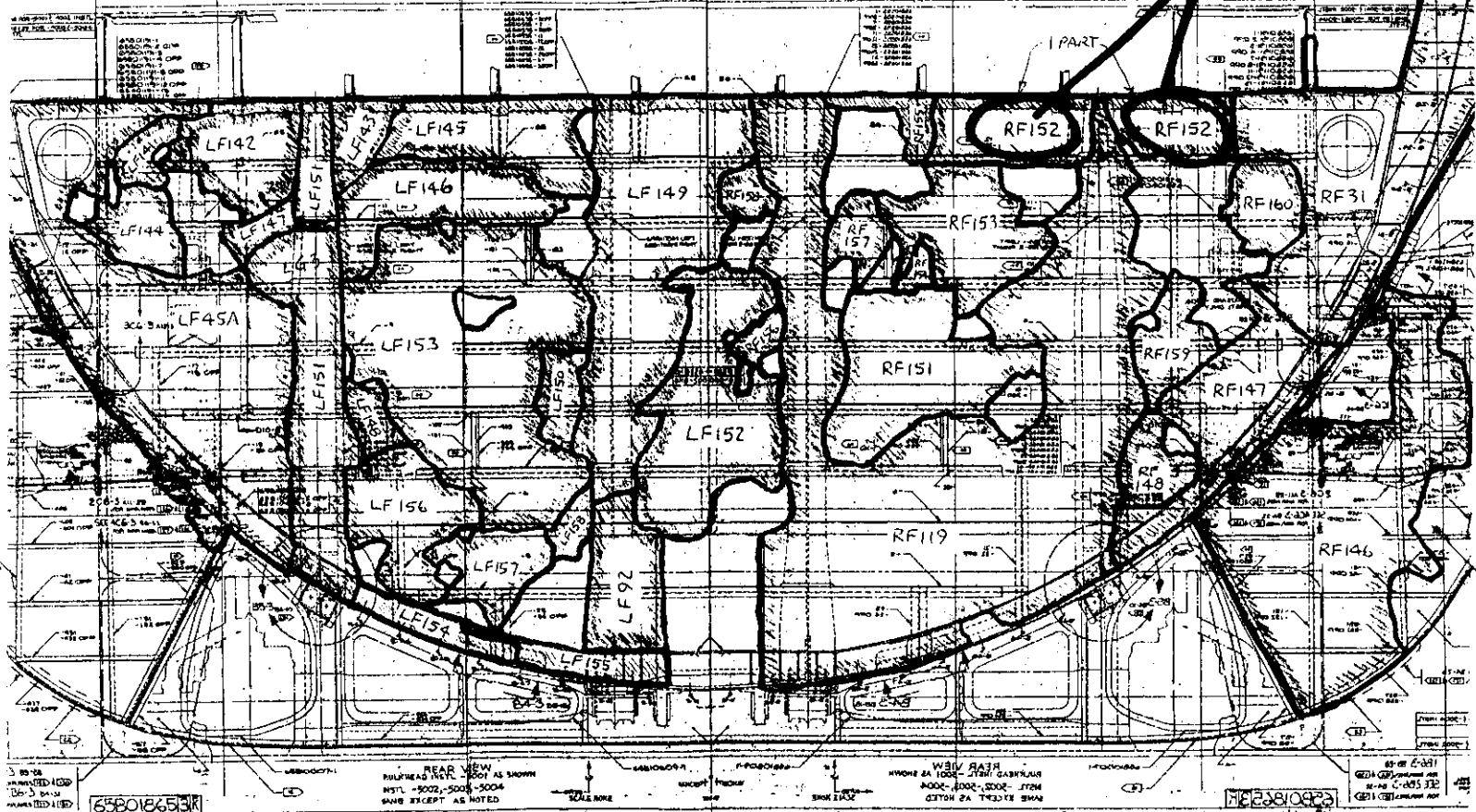
Robert J. Seeger
TWA 2/27/97

Yaghi D. John - ALPA
3-18-97

R. K. Kowen 3/24/97
Boeing

LOG #
RF152

STA 1480 BULKHEAD ROADMAP



ER 1 3-13-9009 E1 E 1 RE

L R

Stephen F. Klayman Jr.
FAD - 03-14-77