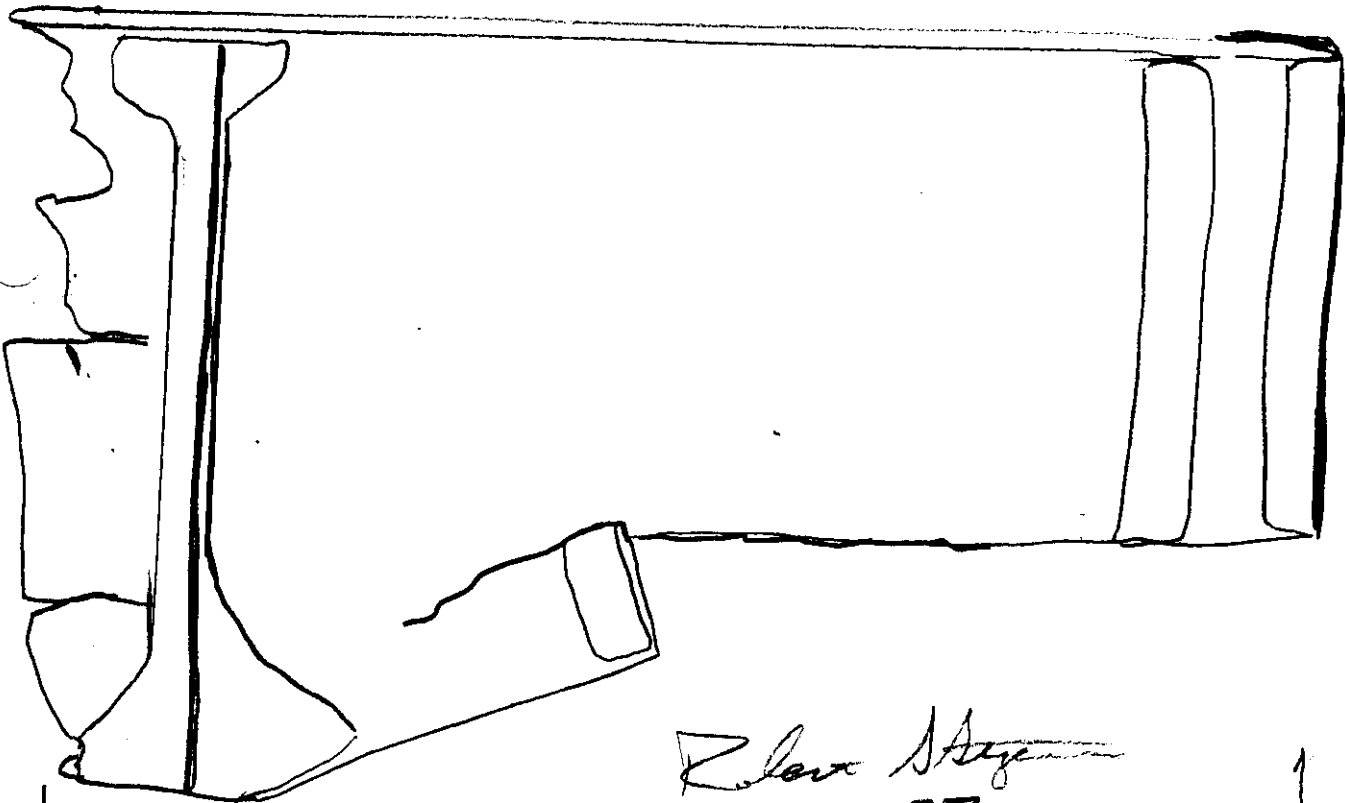


LOG # RF 139

TARGET # DZ115

COORD: LAT _____
LONG _____

RF 139 CONSISTS OF PRESSURE
DECK ^{RBL 515} FLOOR BEAM WEB WITH DEBRIS FIELD WHITE
UPPER CHORD AND LOWER CHORD IS
FAILED AT RADIUS. FWD END OF WEB IS
FAILED AT STIFFENER. AFT END OF WEB IS
SHREDED AS SHOWN.



STA. 1442

STA 1438

Steve Meyer
2-27-97
TWA

Stephen F. Klupacht Jr
FAA -03-05-97

Dennis Santiago
3-7-97
Heidi & John
3-17-97

R. Harauer
3/23/97
Boeing

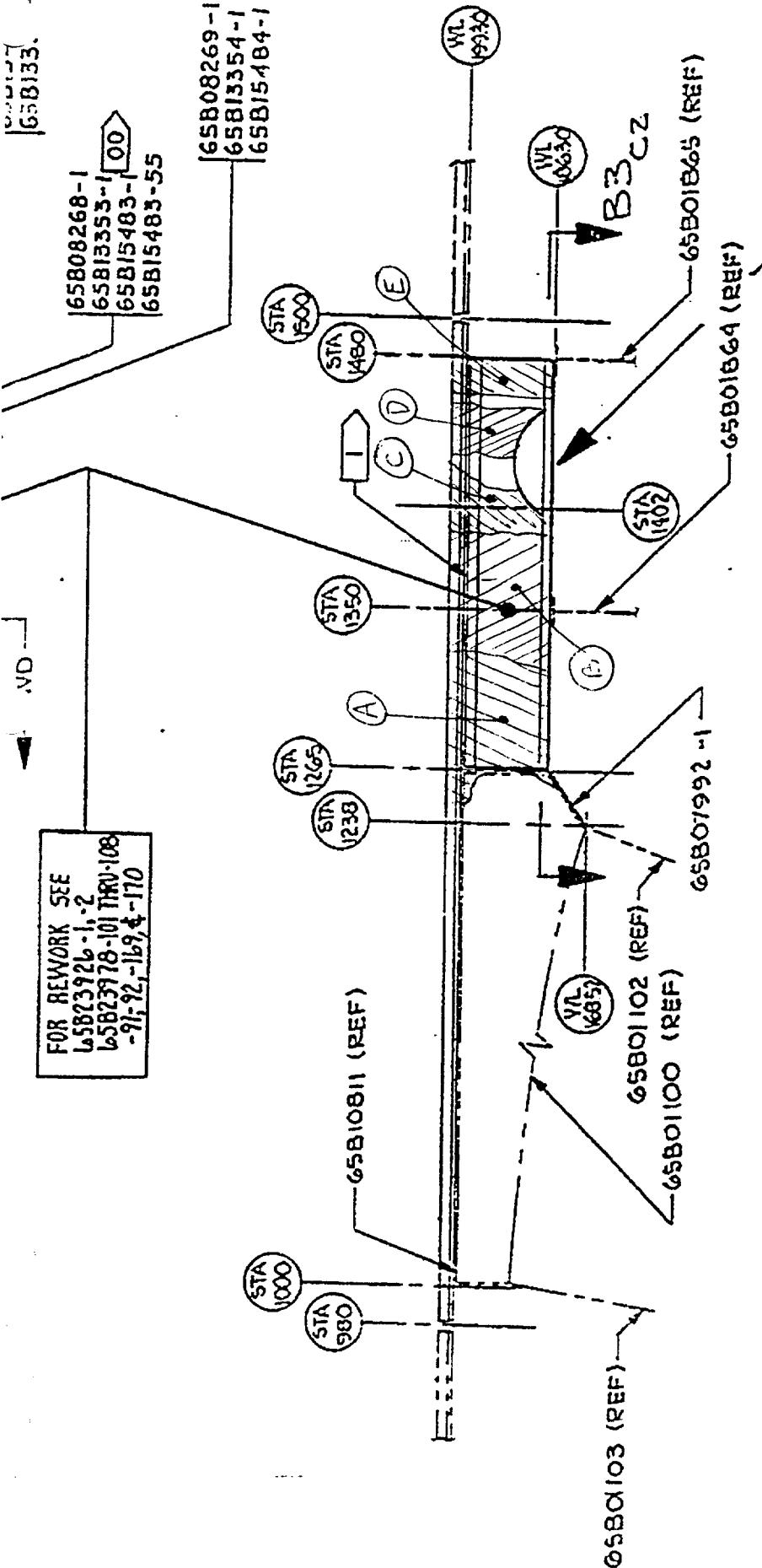
STA 1423

65B133. -55

65B08268-1
65B13353-1
65B15483-1
65B15483-55

65B08269-1
65B13354-1
65B15484-1

FOR REWORK SEE
65B23926-1, 2
65B23978-101 THRU 108
-91, 92, 169, 4-170



FOR REWORK SEE
65B23976-1, 2
65B23978-1 THRU 12
65B24786-1, 2, 3, 4

ITEM	Log #
A	RF126 *
B	RF138
C	RF139
D	RF133 *
E	RF140

RBL 57.5
FLRBM

UP
FWD
SCALE: NONE

* PART OF