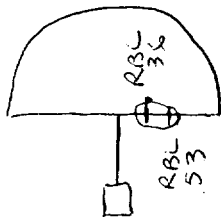


LOG # RF 132
 TARGET # D 2105
 COORD: LAT _____
 LONG _____

B. HUCKING
 BOEING
 2/23/97

DEBRIS FIELD WHITE



VIEW A-A

PRESSURE DECK WEB SEGMENT,
 STA 1442 TO 1457, RBL 36 TO 53

SEGMENT IS JAGGED WITH TWO FWD/AFT CRACKS
 AT RBL 45 AND RBL 47.
 (FWD EDGE) (AFT EDGE)

THERE IS A TRANSVERSE STIFFENER REMNANT ON
 THE LOWER SURFACE RUNNING FROM RBL 38 TO RBL 58.
 THE STIFFENER IS NOTICEABLY BENT OUT OF ITS VERTICAL
 WEB PLANE - IN THE AFT DIRECTION AT ITS INBOARD
 END, AND IN THE FWD DIRECTION AT ITS OUTBOARD END.

THE PANEL WEB IS CURVED ABOUT A LINE RUNNING
 ALONG THE TRANSVERSE STIFFENER. THE CURVE IS ON AN
 APPROXIMATE 7 INCH RADIUS ABOUT AN 80° SWEEP. (CONCAVE
 UPWARD)

THERE IS NO APPARENT SOOTING OF EITHER UPPER
 OR LOWER SURFACES, HOWEVER THERE IS A BROWN
 SUBSTANCE APPROXIMATELY 3 INCH IN DIAMETER
 AT ABOUT STA 1449, RBL 46 ON THE UPPER SURFACE.

Devin Santiago IAM

2/28/97

Stephen F. Klipach Jr
 FAA - 03-06 97

Gene Dobb TWA
 3-11-97

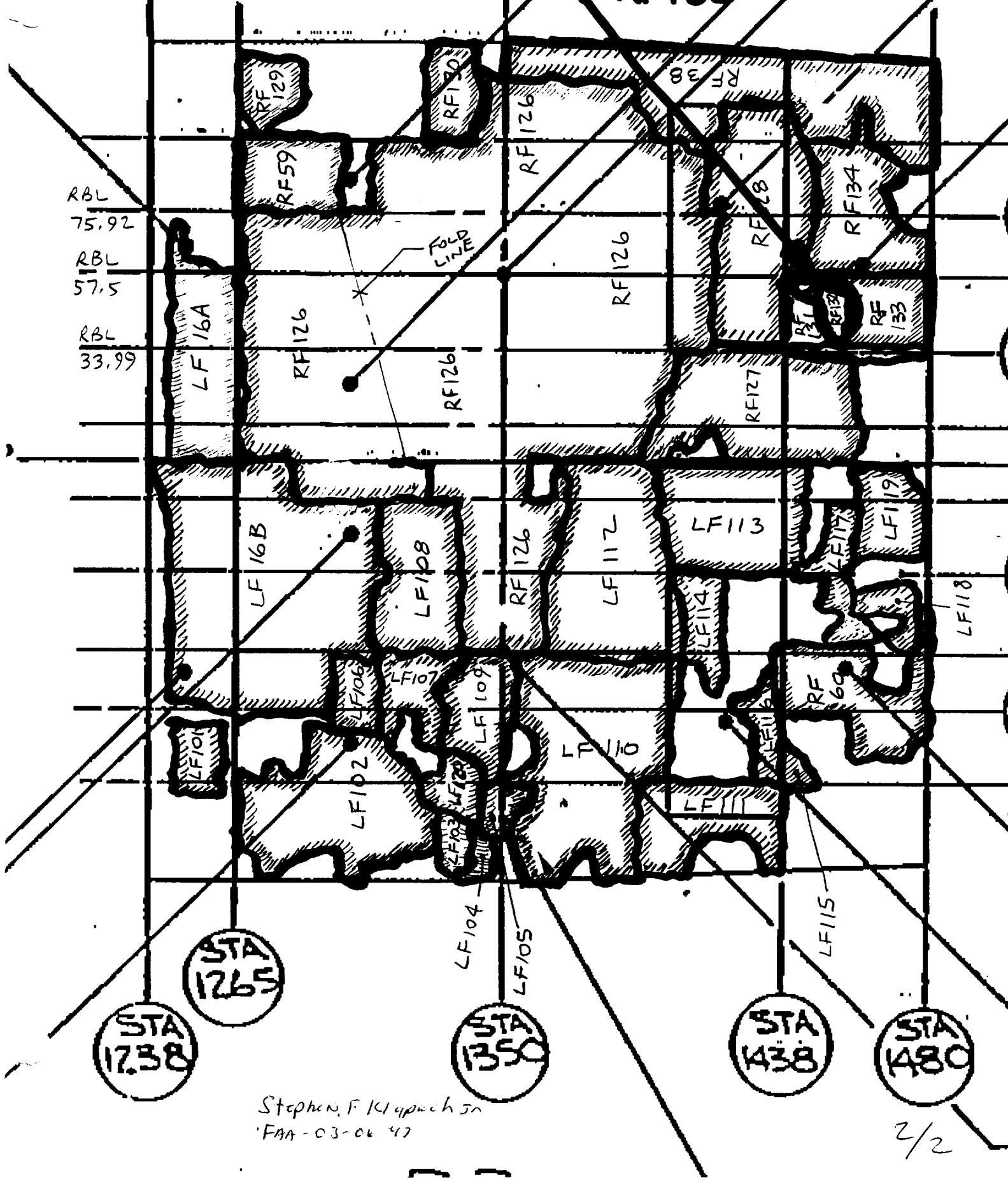
Leigh D. Johnson - ALFA
 3-18-97

65813364 - 2
65813364 - 72

00

LOG#
- RF132

RBL
75.92
RBL
57.5
RBL
33.99



Stephen F Klappich Jr
FAA-03-06 47

2/2