

B. HOCKING
BOEING
2/23/97

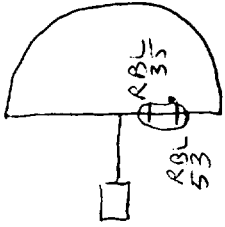
LOG # RF131

TARGET # C2450

COORD: LAT _____

LONG _____

DEBRIS FIELD GREEN



PRESSURE DECK WEB SEGMENT,
STA 1438 TO 1448, RBL 35 TO 53

VIEW A-A

SEGMENT HAS JAGGED EDGES ALL AROUND PERIPHERY EXCEPT FROM RBL 36.5 TO 42 ON ITS FWD EDGE (PANEL ATTACHMENT EDGE AT THE STA 1438 WHEEL RECESS TO HORIZONTAL WEB SPLICE).

THERE IS A REMNANT OF A TRANSVERSE STIFFENER ON THE LOWER SURFACE FROM RBL 33.5 TO 49.5. THE VERTICAL RIB OF THE STIFFENER IS WARPED OUT OF ITS ORIGINAL VERTICAL PLANE, THE OUTBOARD END GOING AFTWARD AND THE INBOARD END GOING FWD.

THERE IS A COMPLETE FWD/AFT WHEEL RECESS SLOPE CHANGE REINFORCEMENT STIFFENER ON THE UPPER SURFACE AT RBL 49.5. IT IS HELD ON BY A HI-LOK AT ITS AFT END. THERE IS A REMNANT OF ANOTHER ONE OF THESE STIFFENERS AT RBL 42 (ABOUT 1/2 LENGTH) HELD ON TO THE WEB IN THE SAME FASHION.

THE PANEL WEB IS CURVED ABOUT A LINE ALONG THE TRANSVERSE STIFFENER. THE CURVE IS CONCAVE UPWARD ABOUT A 30° SWEEP, 8 INCH RADIUS.

THERE IS NO APPARENT SOOTING OF EITHER THE UPPER OR LOWER SURFACE.

Dennis Santiago IAM *George D. Johnson* TWA
3-11-97

2/28/97

Stephen F. Klupach Jr.

FAR 03-06-97

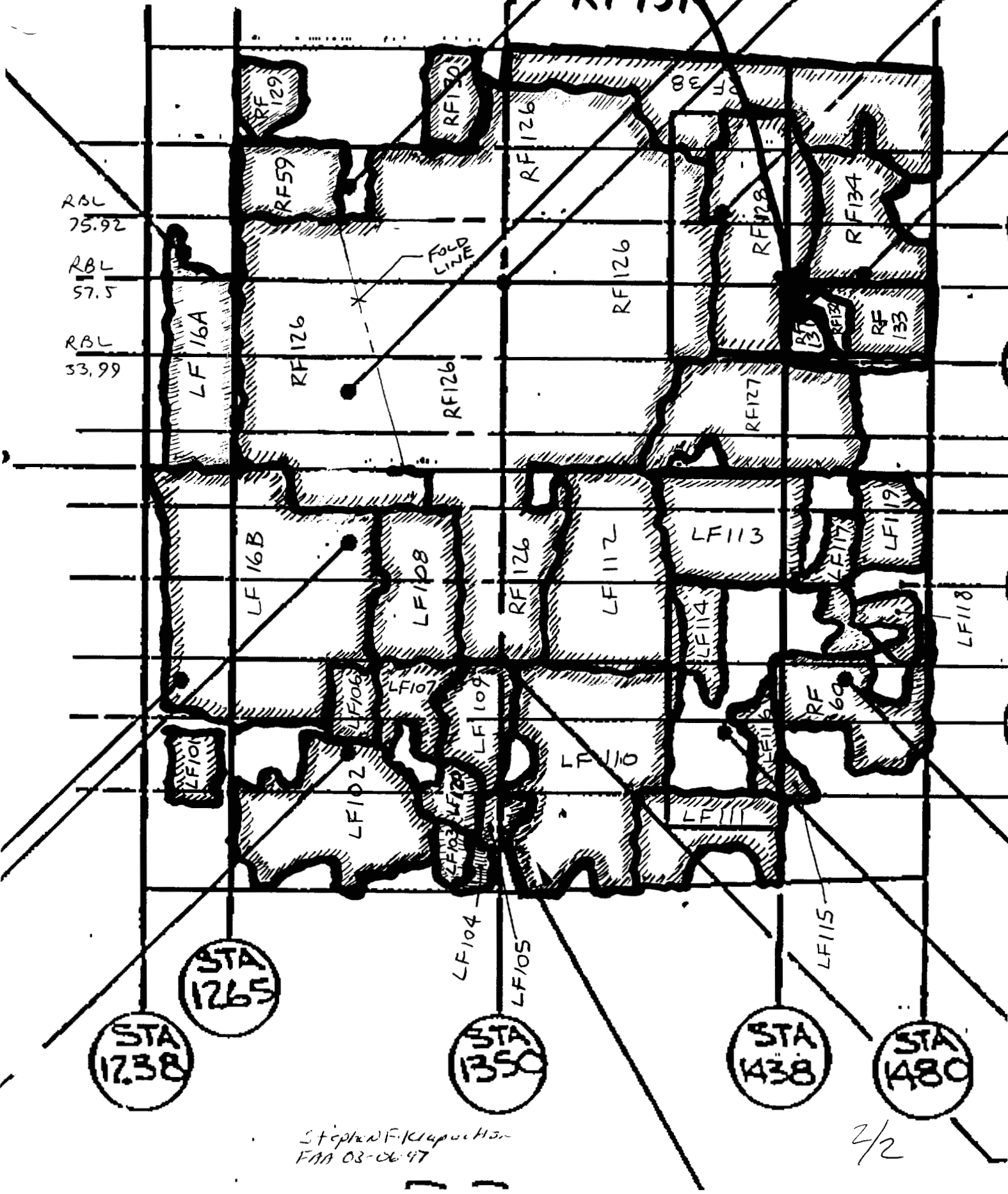
Leigh D. Johnson - ALPA
3-18-97

1/2

65813364 - 2
65813364 - 72

00

LOG #
RF131



Stephan F. Krapach
FAA 03-06-97

2/2