

LOG # RF129

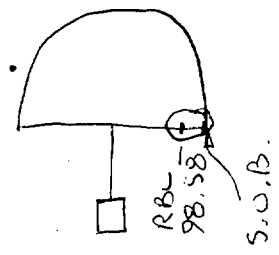
TARGET # D-2092

COORD: LAT \_\_\_\_\_

LONG \_\_\_\_\_

B. HOCKING  
BOEING  
2/19/97

DEBRIS FIELD WHITE

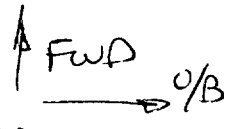


VIEW A-A

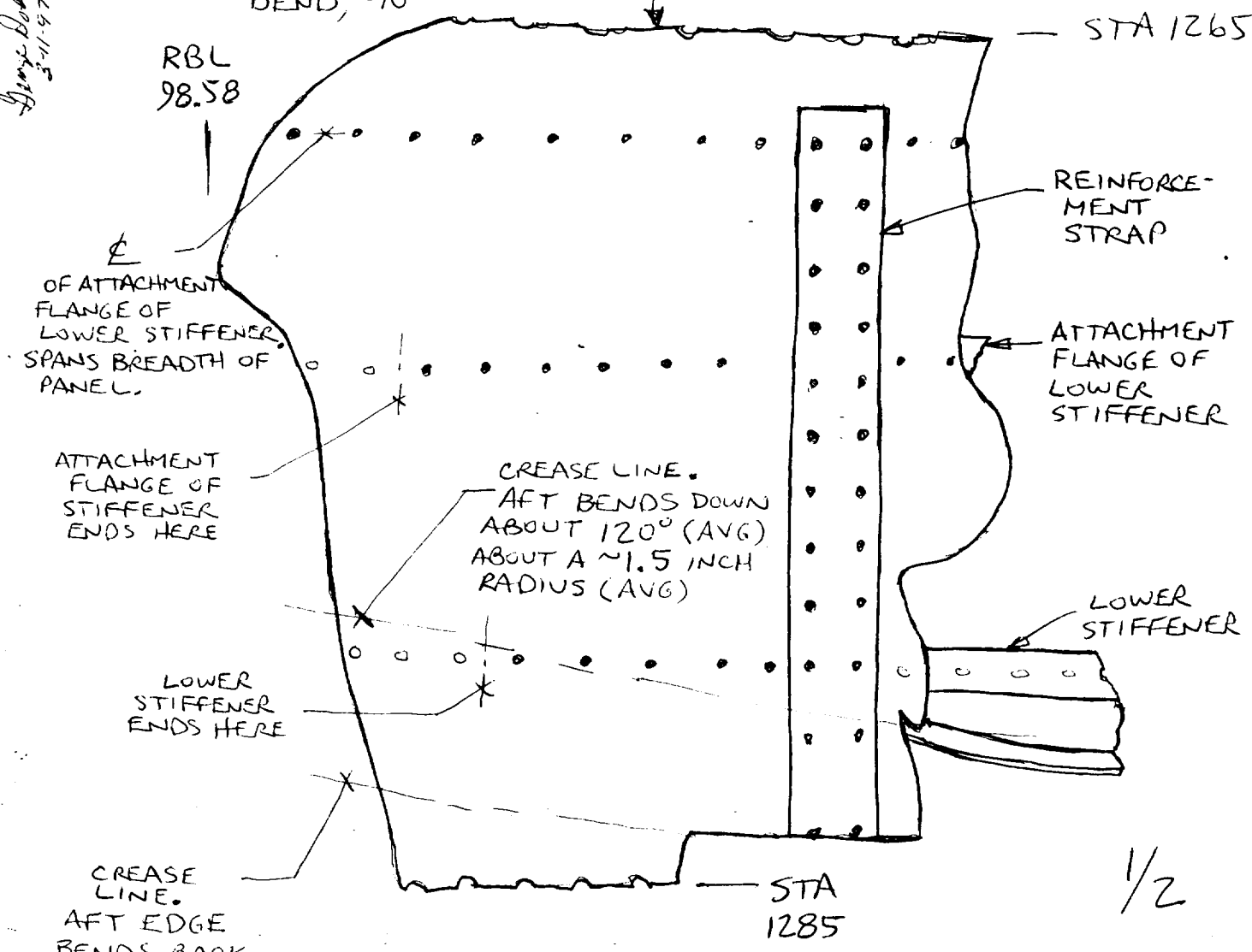
SEGMENT OF PRESSURE DECK  
WEB, STA 1265 TO STA 1285,  
RBL 98.58 TO SIDE OF BODY

*Davis Langley IAH  
2/28/97  
George Bodek TWA  
3-11-97*

FWD EDGE OF  
SEGMENT HAS  
SLIGHT DOWNWARD  
BEND, ~10°



SIDE OF  
BODY (S.O.B.)



*Alvin J. Cook - ALPA  
3-18-97*

PLAN VIEW

Stephen F. Hupac 117  
03-05-97

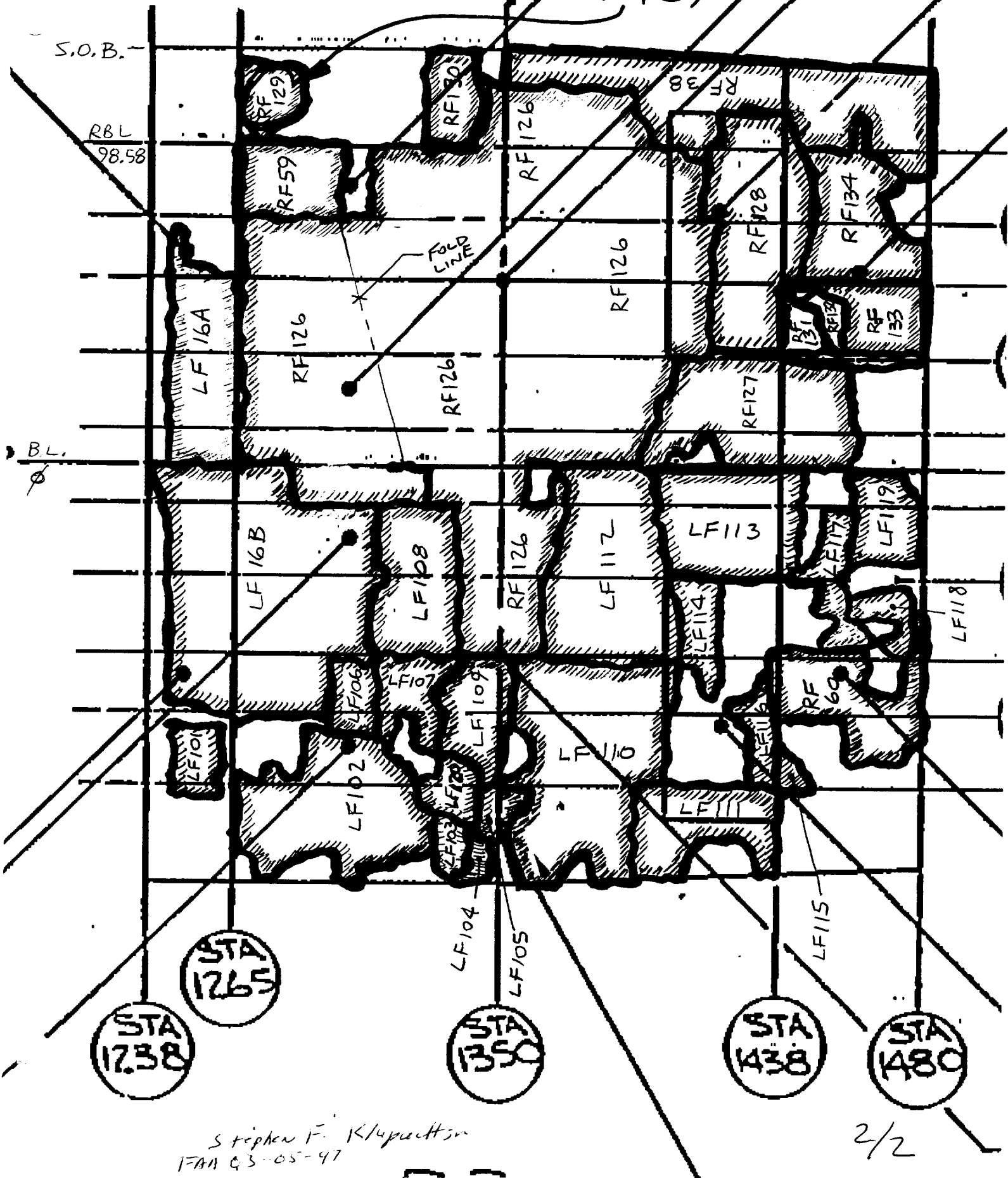
FWD HALF OF SEGMENT  
UPPER & LOWER SURFACES  
APPEARS MODERATELY  
SOOTED.

1/2

65813364 - 2  
65813364 - 72

00

LOG#  
RF129



Stephen F. Kluprechtson  
FAM 03-05-97

2/2