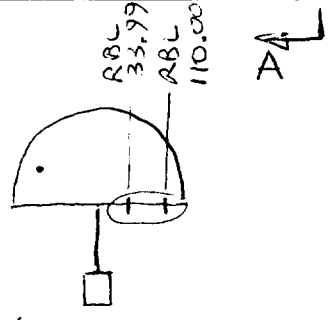


LOG # RF 123
 TARGET # C-414
 COORD: LAT _____
 LONG _____



B. HOCKING
 BOEING
 2/19/97

DEBRIS FIELD GREEN

SEGMENT OF PRESSURE DECK WEB
 FROM STA ~1415 TO ~1448, RBL 33.99
 TO RBL 110

VIEW A-A

WEB: (PART OF BODY LANDING GEAR TIRE RECESS)

- 1) STARTING AT STA ~1420, RBL 33.99, THE WEB FOLLOWS THE TRANSVERSE STIFFENER RIVET LINE OUTBOARD TO RBL 75.92. IT THEN PROCEEDS FORWARD TO THE STA 1415 TRANSVERSE STIFFENER RIVET LINE WHERE IT TURNS OUTBOARD TO THE RBL 98.58 FLOORBEAM. IT NOW RUNS OBLIQUELY OUTBOARD AND AFTWARD TO STA ~1425, RBL ~102.5 AND THEN FOLLOWS THE STA ~1425 TRANSVERSE STIFFENER OUTBOARD TO RBL 110 EDGE OF PANEL. THE PANEL PROCEED AFT ALONG RBL 110 TO STA ~1438 AND THERE TURNS INBOARD AND AFTWARD FOLLOWING A JAGGED LINE TO ABOUT STA 1448, RBL ~~~58~~
77. AT THAT POINT, IT RUNS INBOARD TO RBL 57.5 STA 1444; AND THEN FORWARD TO THE STA 1438 WEB SPLICE. HERE IT FOLLOWS THE STA 1438 SPLICE INBOARD TO RBL 33.99, AND THEN STRAIGHT FORWARD TO THE STARTING POINT.
- 2) THERE APPEARS TO BE NO APPARENT SCOTING OF EITHER THE UPPER OR LOWER SURFACES.

STIFFENERS:

- 1) TWO SEGMENTS OF TRANSVERSE STIFFENERS REMAIN ATTACHED TO THE LOWER SURFACES ALONG STA ~1440 FROM RBL 57.5 TO RBL 110; AND AT STA ~1445 FROM RBL 57.5 TO RBL ~93.

Demetrius Santiago IAM
 3-17-97
Shander Hudson
 TWA 3/19/97

SFC PLAN F-1490000
 FTR 03/17-97

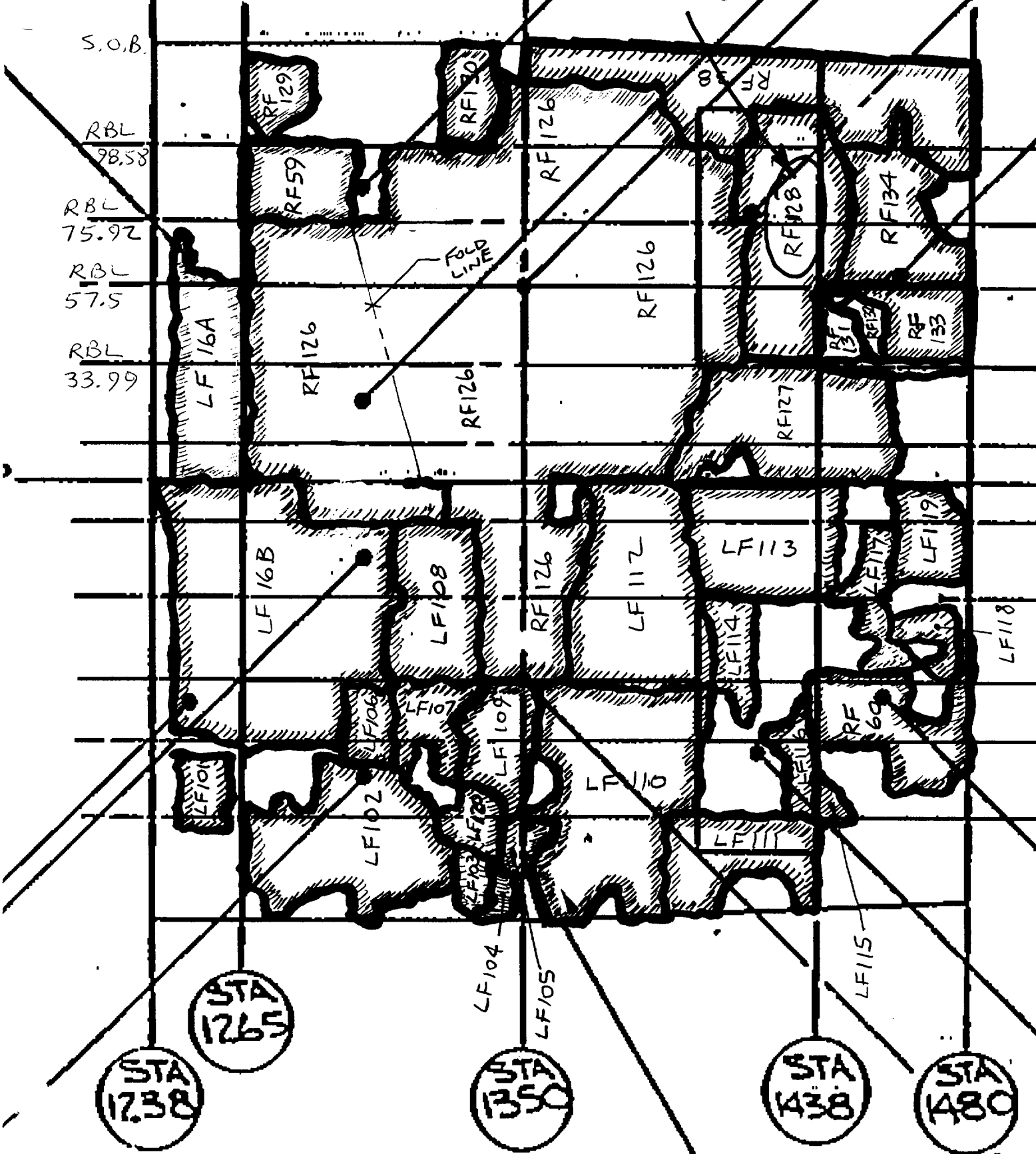
— CONTINUED —

John J. ... -ALPHA
 3-18-97

65813364 - 2
65813364 - 72

00

LOG #
RF128



STEPHEN P. KISPOURTS
FAR-03-14-72

2/3

LOG # RF128

- 2) ON THE TOP SURFACE, STIFFENING REMAINS ATTACHED FOR:
- A) STA ~1420 FROM RBL 57.5 TO RBL 98.58.
 - B) STA ~1425 FROM RBL 33.99 TO RBL ~110
 - C) STA ~1431 FROM RBL 33.99 TO RBL ~110
 - D) STA ~1438 FROM RBL 98.58 TO RBL ~110
(EVIDENTLY, PART OF A STA 1438 STUB BEAM WHICH RUNS FROM THE BODY FRAME TO RBL 98.58 FLOORBEAM)
 - E) FWD/AFT STIFFENERS FROM STA ~1431 TO STA ~1444 AT BUTTLINES RBL ~67.5, RBL ~84, RBL ~91.
 - F) A FWD/AFT STIFFENER AT RBL ~105.5 REMAINS ATTACHED FROM STA ~1431 TO STA ~1438

FLOORBEAMS:

- 1) PART OF THE RBL 57.5 FLOORBEAM WEB REMAINS ATTACHED TO THE FLOORBEAM LOWER CHORD FROM STA ~1420 TO STA ~1431. (ABOUT 1/2 INCHES HIGH)
- 2) PART OF THE RBL 75.92 FLOORBEAM WEB REMAINS ATTACHED TO THE FLOORBEAM LOWER CHORD FROM STA ~1420 TO STA ~1434. (ABOUT 1 1/2 INCHES HIGH.)
- 3) PART OF THE RBL 98.58 FLOORBEAM WEB REMAINS ATTACHED FROM STA ~1416 TO STA ~1442, ~~FOR~~ FROM THE UPPER CHORD TO THE LOWER CHORD.
- 4) THE RBL 98.58 FLOORBEAM WEB POSSESSES A "CLOVER LEAF" SHAPED HOLE CENTERED AT ABOUT STA 1434.5, W.L. 197, IN CLOSE PROXIMITY TO A PRODUCTION 1.0 INCH DIAMETER CUTOUT WITH TWO RING DOUBLERS. A TEAR RUNS THRU THE WEB AND DOUBLERS BETWEEN THE HOLES.

Stephen F. Klupackon
FAA-03-17-47